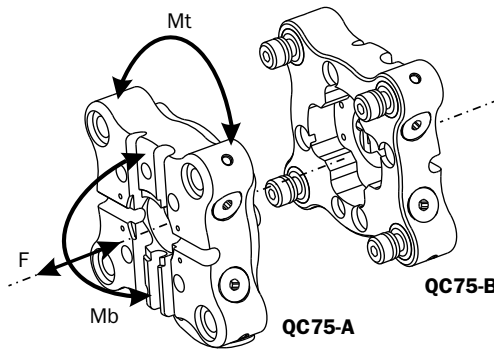
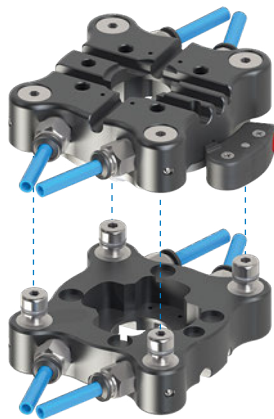
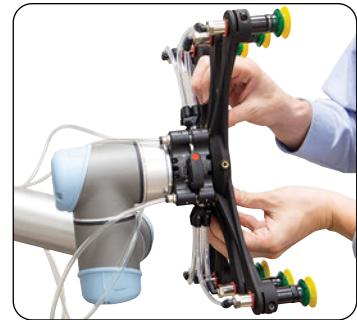
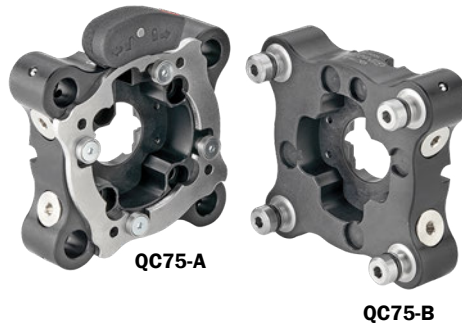
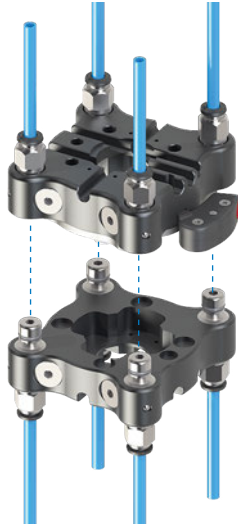


Quick changer for collaborative robots

- Streamlined surfaces.
- ISO 9409-1-50-4-M6 mounting pattern.
- Through hole in the middle for the optional electric connections.
- 4 integrated air ports in the pins.
- In-line or perpendicular output of the air hoses.
- The two parts (robot side and gripper side) are supplied separately.

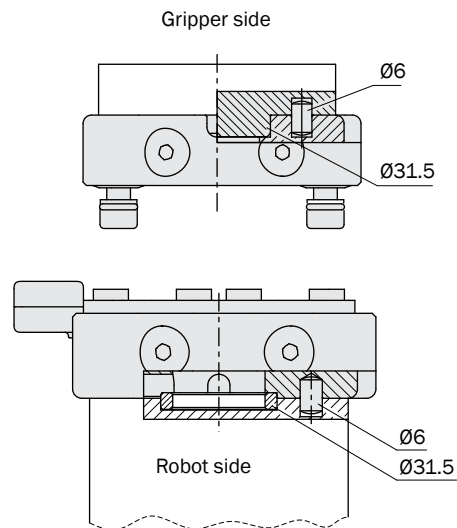
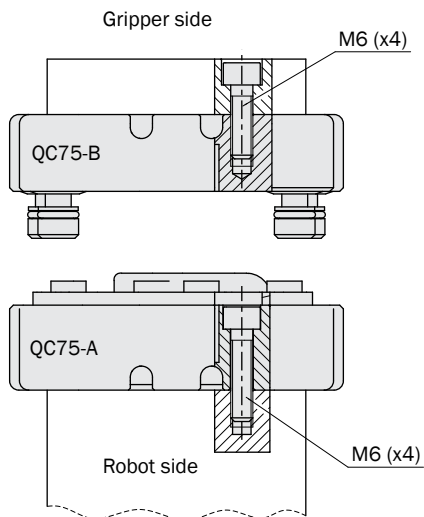
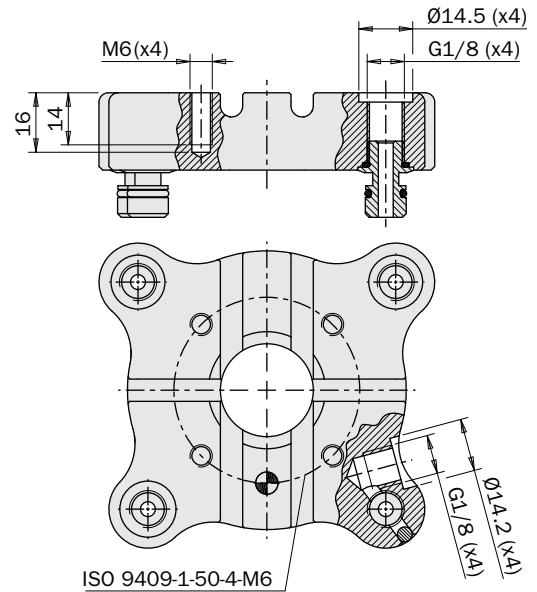
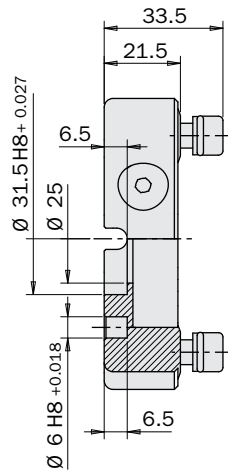
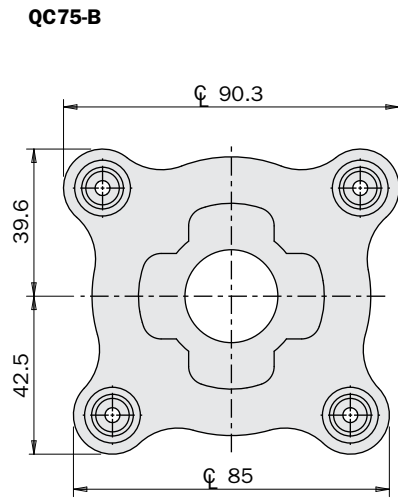
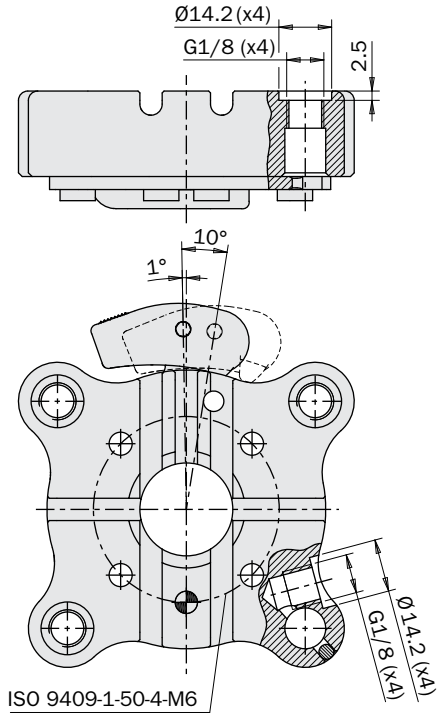
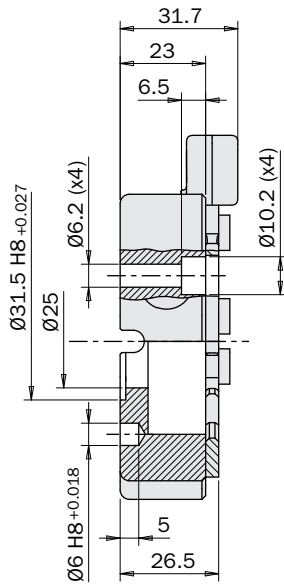
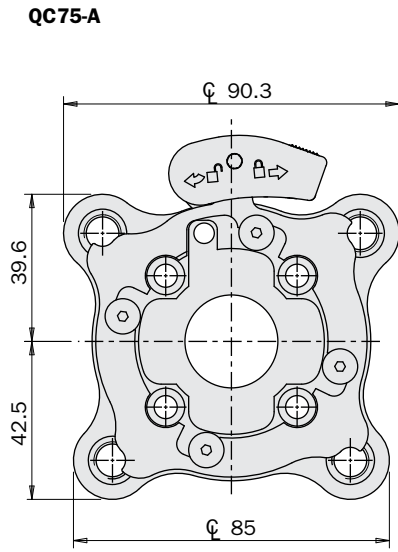


[Click for Pricing & Add to Cart](#)



	QC75-A	QC75-B
	Robot side quick changer	Quick changer (gripper side)
Medium	Compressed air in compliance with ISO 8573-1:2010 [7:4:4]	
Pressure range	-1 ÷ 8 bar	
Temperature range	5 ÷ 60 °C	
Weight	300 g	260 g
F	1000 N	
Mt	150 Nm	
Mb	50 Nm	
Maximum recommended load	20 Kg	

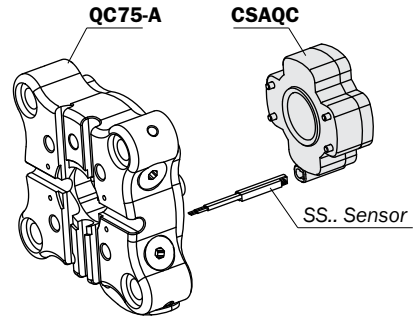
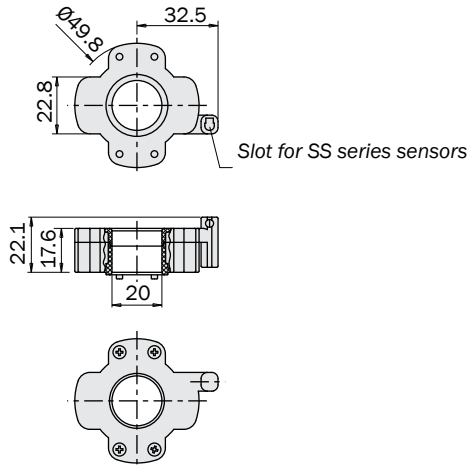
Dimensions (mm)



CSAQC (Robot side)

- Sensor holding box for the locking confirmation.

	CSAQC
Weight	15 g

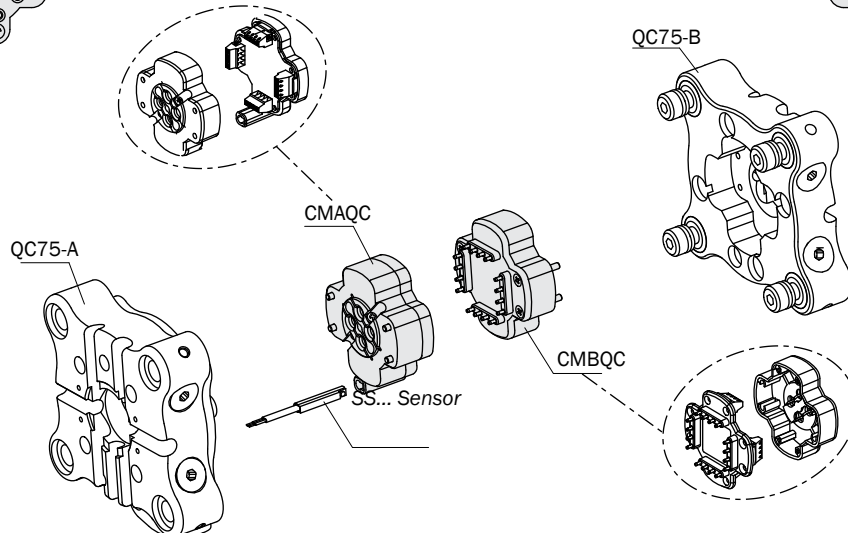
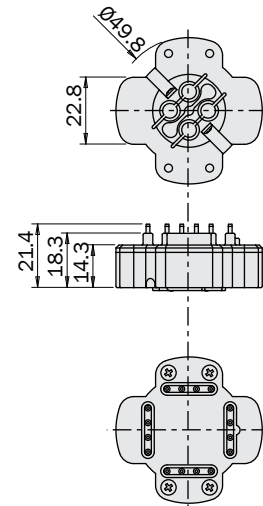
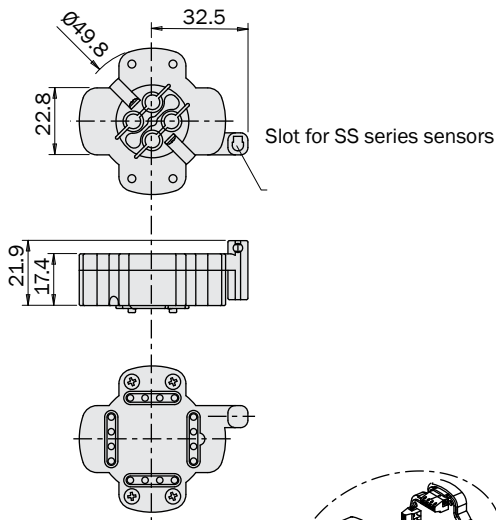


CMAQC (Robot side) + CMBQC (Gripper side)

- The two parts are supplied separately.
- 16 reconfigurable electric lines with screw terminals.
- 16 spring connectors.
- Sensor slot for the locking confirmation in CMAQC.

	CMAQC
Weight	19 g

	CMBQC
Weight	19 g



CRAQC (Robot side) + CRBQC (Gripper side)

- The two parts are supplied separately.
- 16 available prewired electric lines.
- 16 spring connectors.
- Sensor slot for the locking confirmation in CRAQC.
- RFID prewired (2 additional 8-pole cables) reader in CRAQC.
- TAG in CRBQC for the gripper recognition.

CRAQC	
Weight	140 g

CRBQC	
Weight	80 g

