

Self-centering pneumatic gripper (series X)

- XP-...: 2 jaw parallel gripper.
- XT-...: 3 jaw parallel gripper.
- XA-...: 2 jaw angular gripper.
- XR-...: 2 jaw radial gripper.
- Double acting.
- Excellent cost/performance ratio.
- Light weight, due to its alloy and plastic resin construction.
- Gripper mounting possible on two sides.
- Optional magnetic sensors.
- FDA-H1 food-grade grease.



XR-26



XR-20



XA-26



XA-20



XP-26



XP-20



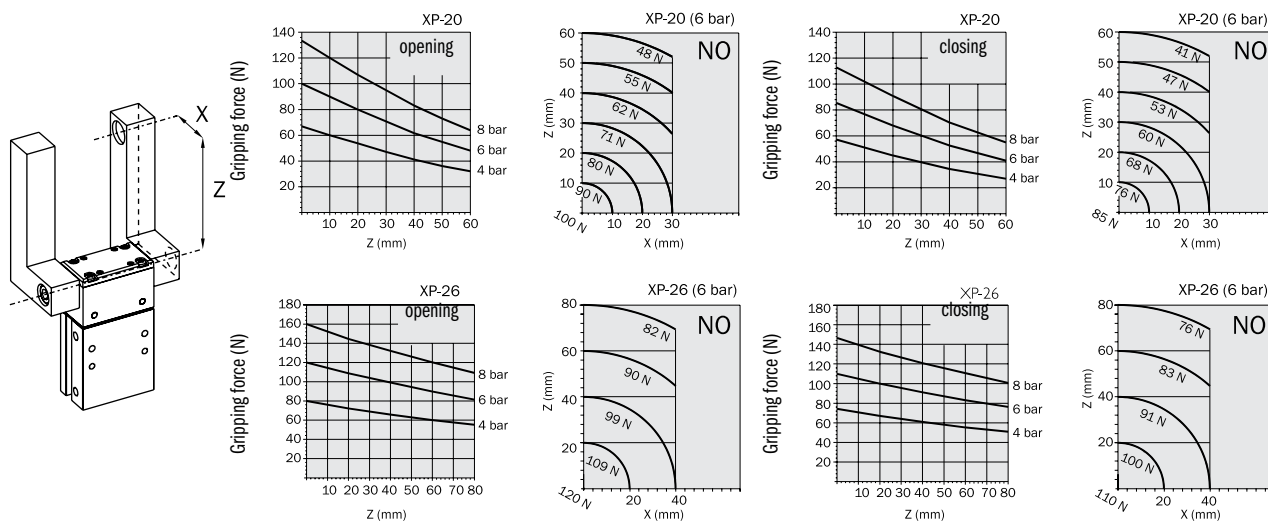
XT-26



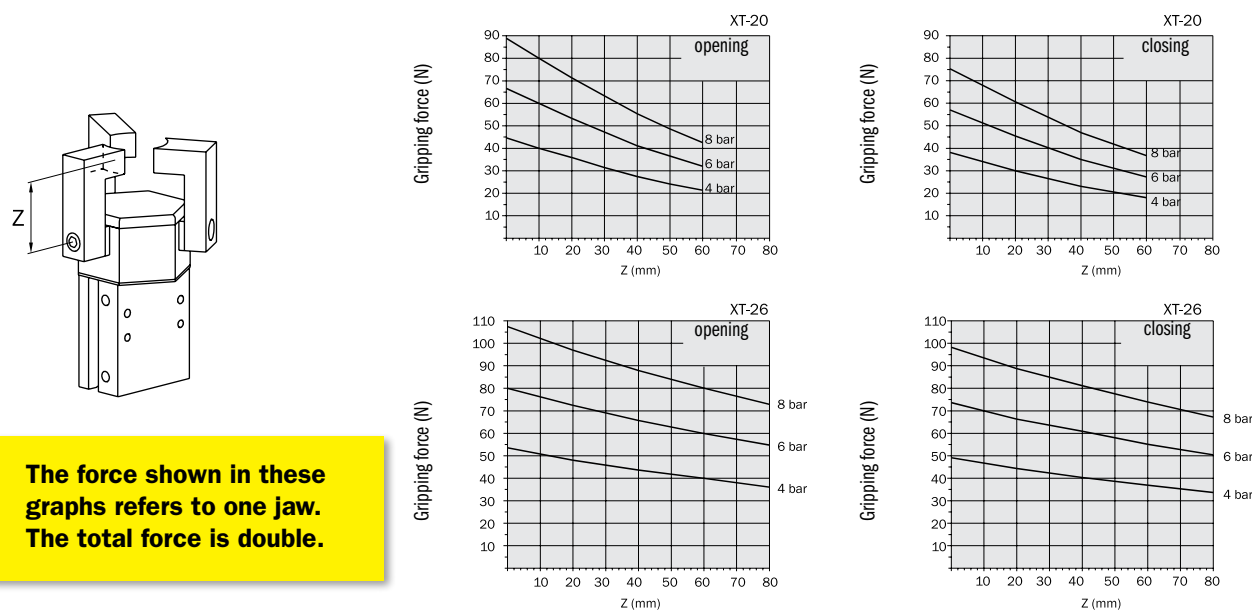
XT-20

Gripping force

XP... The graphs show the gripping force on each jaw, as a function of the operating pressure, the gripping tool length Z and the overhanging X.

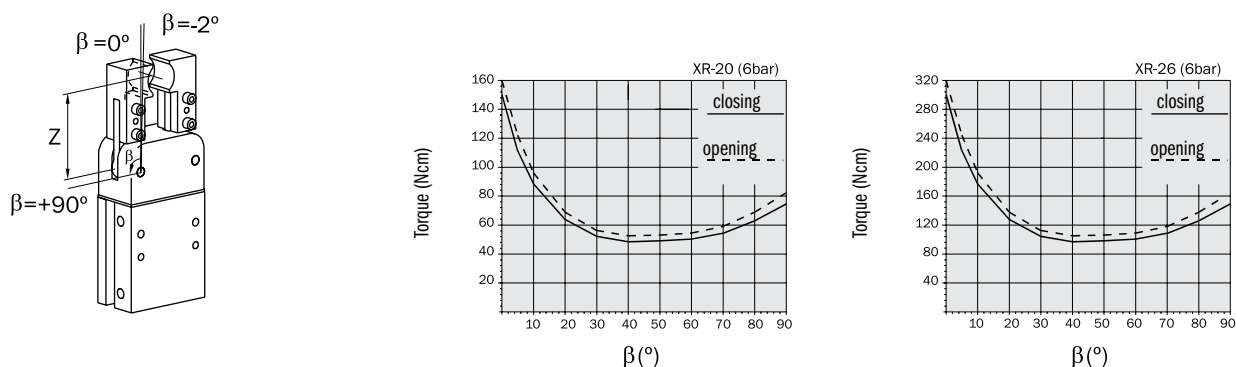


XT... The graphs show the gripping force on each jaw, as a function of the operating pressure and the gripping tool length Z.



The force shown in these graphs refers to one jaw. The total force is double.

XR... The graphs show the gripping torque on each jaw, as a function of the angular position β of the jaw.

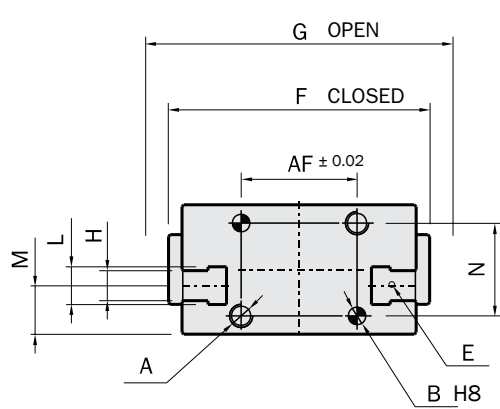


	XP-20	XP-26
Medium	Compressed air in compliance with ISO 8573-1:2010 [7:4:4]	
Operating pressure range	2 ÷ 8 bar	
Operating temperature range	5 ÷ 60 °C.	
Closing gripping force at 6 bar on each jaw	85 N	110 N
Closing total gripping force at 6 bar	170 N	220 N
Opening gripping force at 6 bar on each jaw	100 N	120 N
Opening total gripping force at 6 bar	200 N	240 N
Total stroke	8 mm	13.2 mm
Maximum working frequency	3 Hz	2 Hz
Cycle air consumption	7 cm ³	12 cm ³
Closing time without load	0.02 s	0.05 s
Repetition accuracy	0.02 mm	0.02 mm
Weight	160 g	300 g

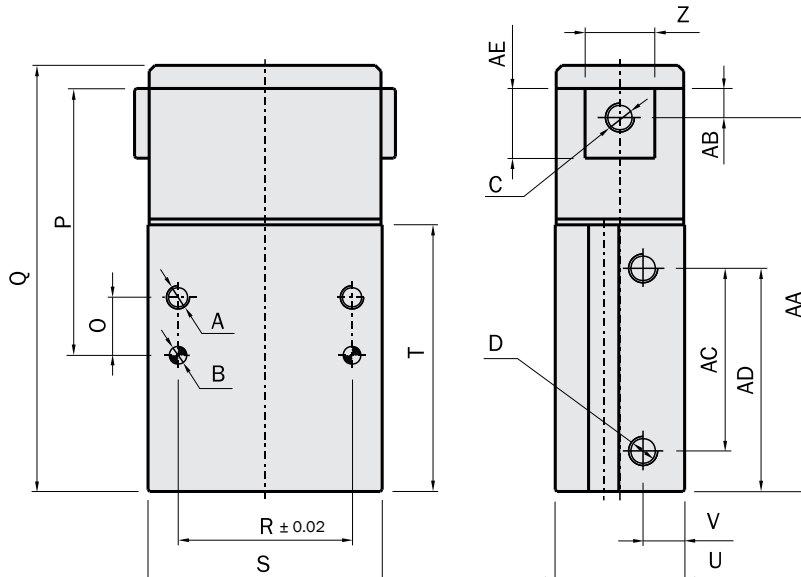
Dimensions (mm)



	XP-20	XP-26
A	M4x6	M5x10
B	Ø3x6	Ø4x6
C	M5x8	M6x9
D	M5	
E	SC - SL - SS - SN	
F	44.8	54.6
G	52.8	67.8
H	5.2	
L	6.5	
M	8.35	11.15
N	16	21
O	10	12
P	46	56
Q	73.5	77
R	30	36
S	40.4	50.4
T	46	42.8
U	22.3	30.3
V	7.15	10.15
Z	12	15
AA	64.5	65.5
AB	5	6.5
AC	31.5	30
AD	38.5	36.5
AE	12	15
AF	20	25



- A** Threaded hole for fastening
- B** Dowel pin hole
- C** Threaded hole for gripping tool fastening
- D** Air connection
- E** Gimatic sensor slot

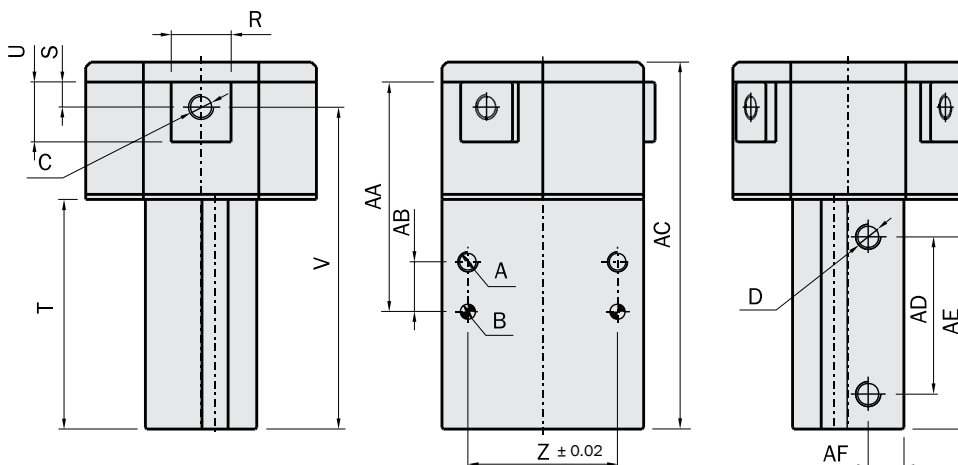
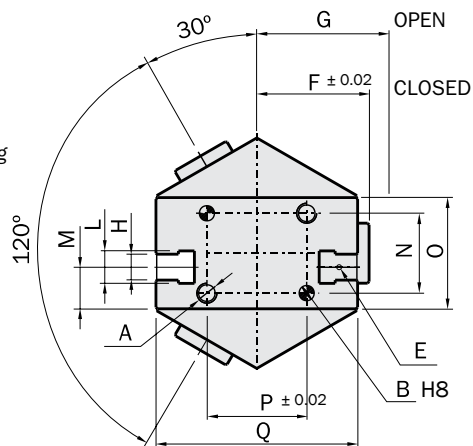


	XT-20	XT-26
Medium	Compressed air in compliance with ISO 8573-1:2010 [7:4:4]	
Operating pressure range	2.5 ÷ 8 bar	
Operating temperature range	5 ÷ 60 °C.	
Closing gripping force at 6 bar on each jaw	57 N	73 N
Closing total gripping force at 6 bar	171 N	219 N
Opening gripping force at 6 bar on each jaw	67 N	80 N
Opening total gripping force at 6 bar	201 N	240 N
Stroke	3 x 3.6 mm	3 x 6.6 mm
Maximum working frequency	3 Hz	2 Hz
Cycle air consumption	7 cm ³	12 cm ³
Closing time without load	0.02 s	0.05 s
Repetition accuracy	0.02 mm	0.02 mm
Weight	210 g	350 g

Dimensions (mm)



- A** Threaded hole for fastening
- B** Dowel pin hole
- C** Threaded hole for gripping tool fastening
- D** Air connection
- E** Gimatic sensor slot

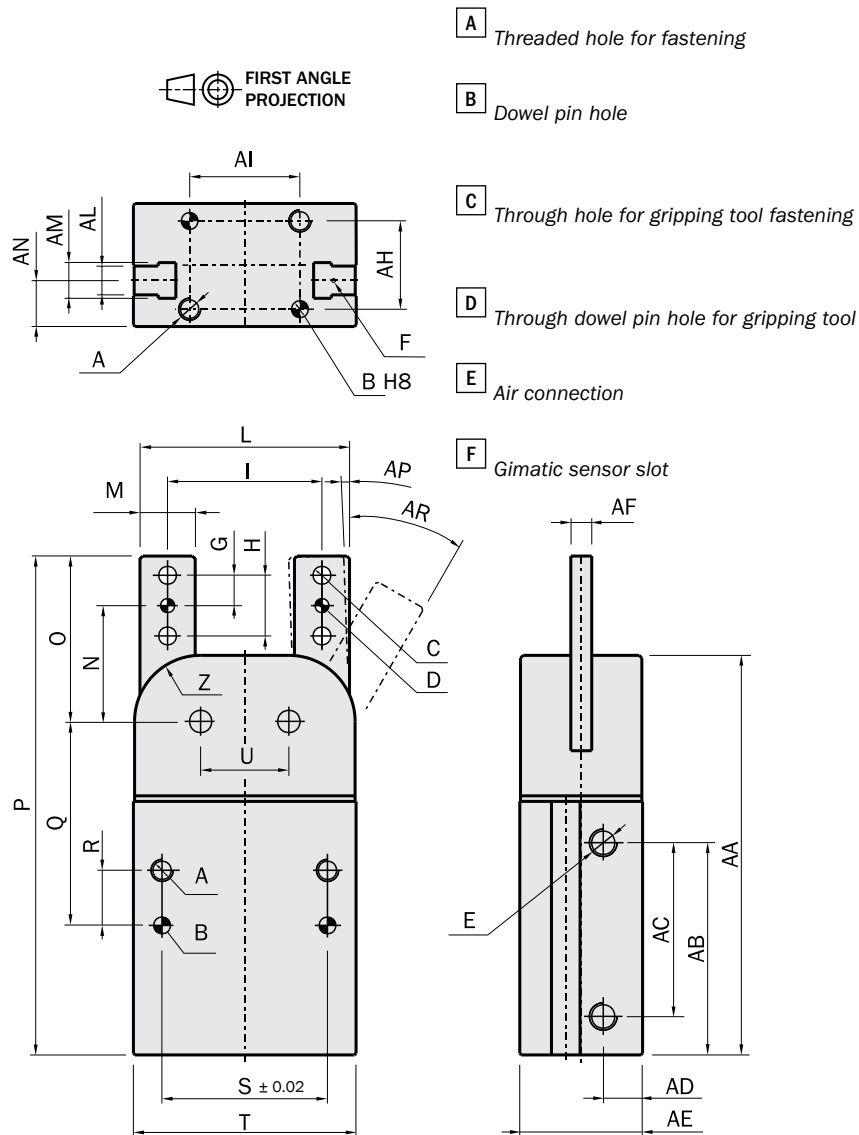


	XT-20	XT-26
A	M4x6	M5x10
B	Ø3x6	Ø4x6
C	M5x8	M6x9
D	M5	
E	SC - SL - SS - SN	
F	22.4	27.1
G	26	33.7
H	5.2	
L	6.5	
M	8.35	11.15
N	16	21
O	22.3	30.3
P	20	25
Q	40.4	50.4
R	12	15
S	5	6.5
T	46	42.8
U	12	15
V	64.5	65.5
Z	30	36
AA	46	56
AB	10	12
AC	73.5	77
AD	31.5	30
AE	38.5	36.5
AF	7.15	10.15

	XA-20	XA-26
Medium	Compressed air in compliance with ISO 8573-1:2010 [7:4:4]	
Operating pressure range	2 ÷ 8 bar	
Operating temperature range	5 ÷ 60 °C.	
Closing torque at 6 bar on each jaw	46 Ncm	79 Ncm
Closing torque force at 6 bar	92 Ncm	158 Ncm
Opening torque at 6 bar on each jaw	50 Ncm	85 Ncm
Opening torque force at 6 bar	100 Ncm	170 Ncm
Stroke	2 x 30°	2 x 32°
Maximum working frequency	3 Hz	2 Hz
Cycle air consumption	6 cm ³	11 cm ³
Closing time without load	0.02 s	0.03 s
Repetition accuracy	0.04°	0.04°
Weight	140 g	250 g

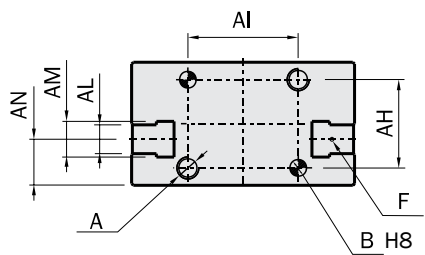
Dimensions (mm)

	XA-20	XA-26
A	M4x6	M5x10
B	Ø3x6	Ø4x8
C	Ø3.2	Ø4.3
D	Ø2.5H8	Ø3H8
G	5.5	6
H	11	12
I	28	31
L	38	45
M	10	14
N	21	25.7
O	30	36.7
P	90.5	95.1
Q	37	42.4
R	10	12
S	30	36
T	40.4	50.4
U	16	19.3
Z	R=12	R=16
AA	72.5	73.6
AB	38.5	36.5
AC	31.5	30
AD	7.15	10.15
AE	22.3	30.3
AF	3.8	5.4
AH	16	21
AI	20	25
AL		5.2
AM		6.5
AN	8.35	11.15
AP	4°	2°
AR	26°	30°

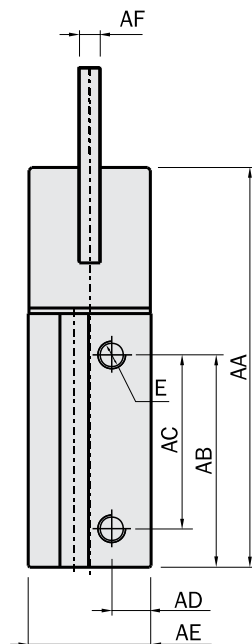
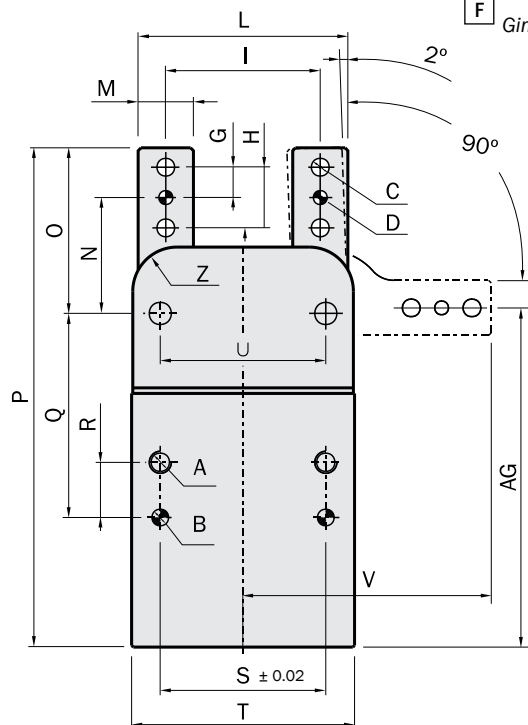


	XR-20	XR-26
Medium	Compressed air in compliance with ISO 8573-1:2010 [7:4:4]	
Operating pressure range	2 ÷ 8 bar	
Operating temperature range	5 ÷ 60 °C.	
Closing maximum torque at 6 bar on each jaw	150 Ncm	300 Ncm
Opening maximum torque at 6 bar on each jaw	160 Ncm	320 Ncm
Stroke	2 x 92°	2 x 92°
Maximum working frequency	2 Hz	2 Hz
Cycle air consumption	11 cm ³	19 cm ³
Closing time without load	0.08 s	0.12 s
Repetition accuracy	0.06°	0.06°
Weight	140 g	260 g

Dimensions (mm)



- A** Threaded hole for fastening
- B** Dowel pin hole
- C** Through hole for gripping tool fastening
- D** Through dowel pin hole for gripping tool
- E** Air connection
- F** Gimatic sensor slot



	XR-20	XR-26
A	M4x6	M5x10
B	Ø3x6	Ø4x8
C	Ø3.2	Ø4.3
D	Ø2.5H8	Ø3H8
E	M5	
F	SC - SL - SS - SN	
G	5.5	6
H	11	12
I	28	31
L	38	45
M	10	14
N	21	25.7
O	30	36.7
P	90.5	95.1
Q	37	42.4
R	10	12
S	30	36
T	40.4	50.4
U	30	39
V	45	56.2
Z	R=8	
AA	72.5	73.6
AB	38.5	36.5
AC	31.5	30
AD	7.15	10.15
AE	22.3	30.3
AF	3.8	5.4
AG	61.5	62.4
AH	16	21
AI	20	25
AL	5.2	
AM	6.5	
AN	8.35	11.15