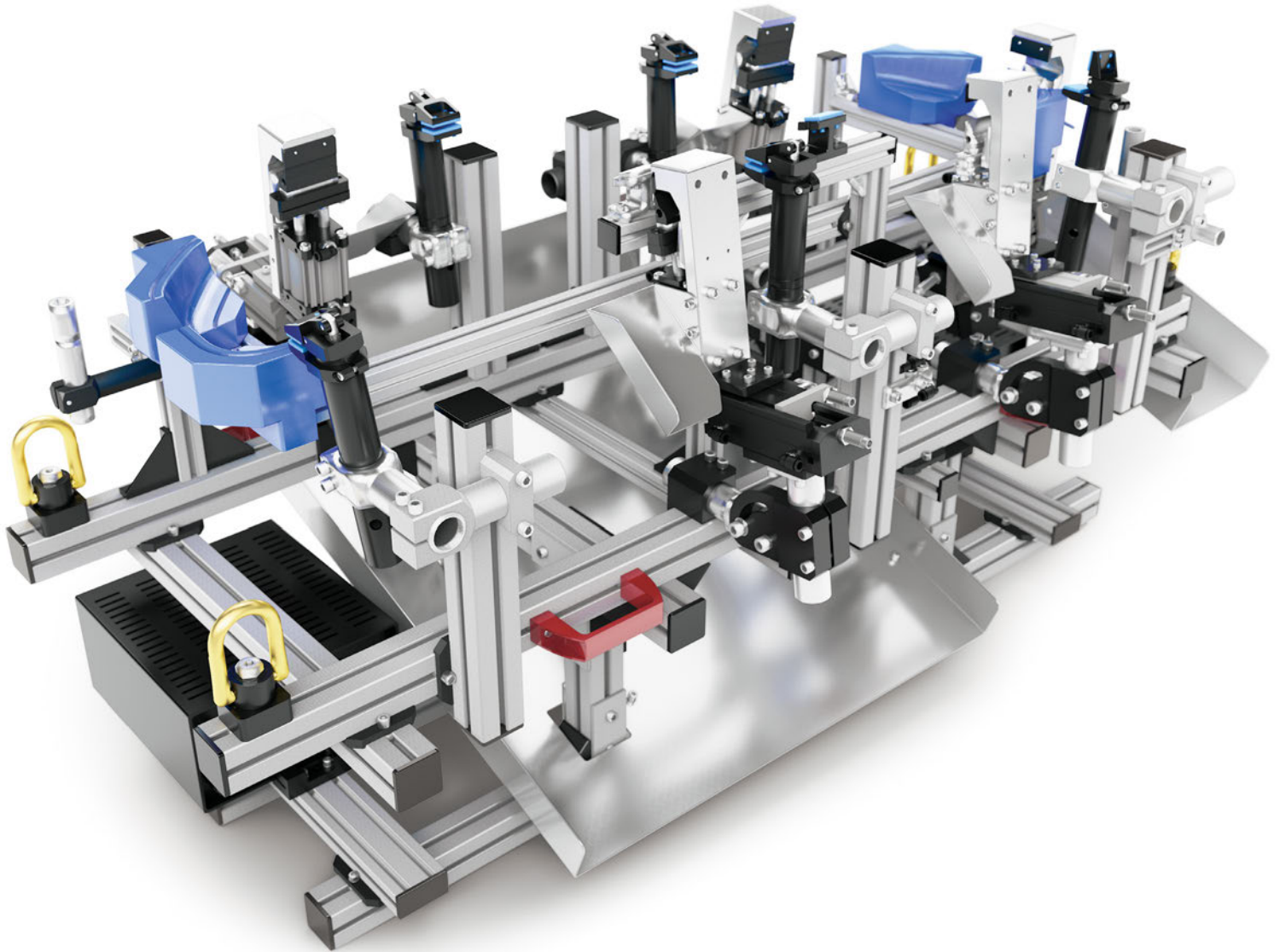




*ROBOT END-OF-ARM TOOLING*



*DESIGN  
ORDER*  
**EVERYTHING YOU NEED TO BUILD A ROBOT END-OF-ARM**  
*3D PRINT  
SUPPORT*

*EMICorp.com*



## ***EMI's In-House Custom Approach***

### ***Find a Perfect Lightweight & Cost Effective Solution!***

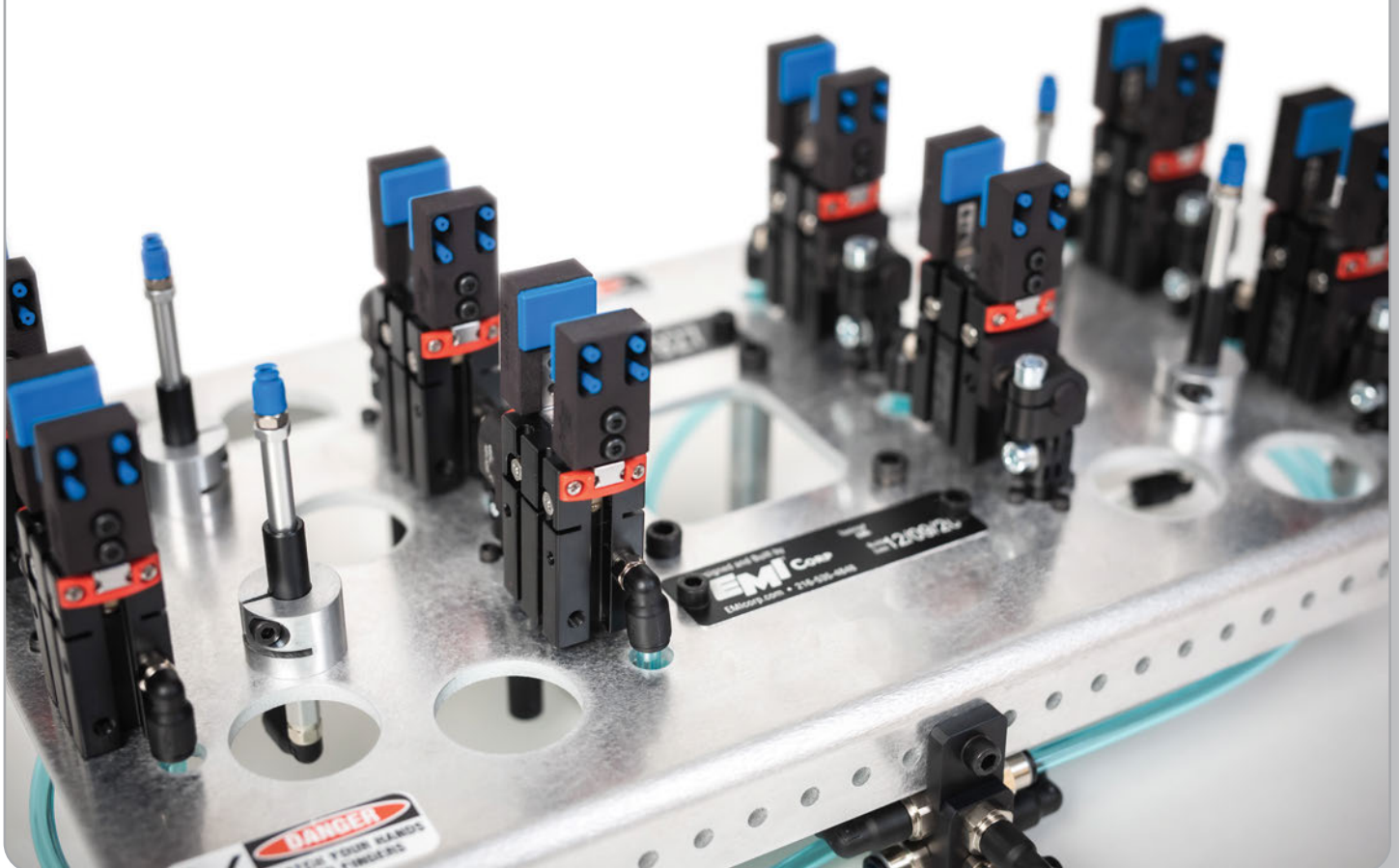
EMI's in-house laser cutting and 3D printing service allows us to provide considerable time and cost savings without sacrificing quality.

Contact us for more information about our Laser-Cut Plate EOAT service.

### ***Custom 3D Printed or Machined Fingers from EMI!***

In-house 3D printing and CNC equipment allow EMI to provide custom fingers quickly and competitively-priced.

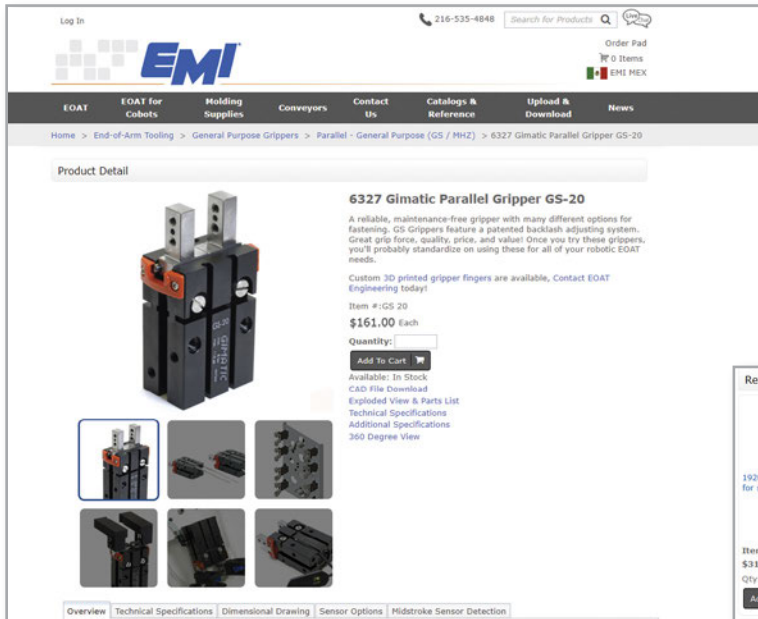
Contact us for more information about our 3D Printing service and how to pick the best option for your application!



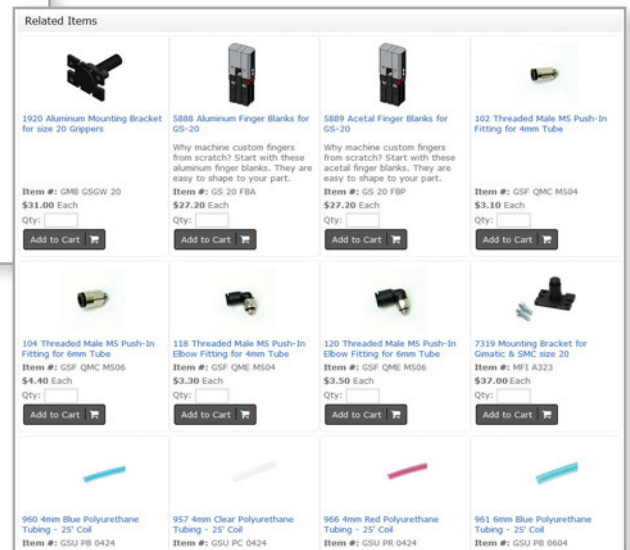
## Easy Online Ordering!

Easy-to-use e-commerce shows availability and current pricing with quick links to EMI catalog pages, related products, replacement parts, CAD file downloads, and 360° views. Our online catalogs include direct links to our e-commerce product pages. Easily add items to your shopping cart while you browse the catalog.

Once an order is received our customer service department will be in touch with an order confirmation that includes shipping cost and order tracking information.



- Upfront, current pricing!
- Application examples
- CAD file downloads
- Additional specifications
- Dimensional drawings
- Related items
- Exploded views with replacement parts



## In-Stock Items Ship Same Day!

Take advantage of our large inventory in the United States and Mexico. We make every effort we can to ensure all orders of in-stock components ship same-day!

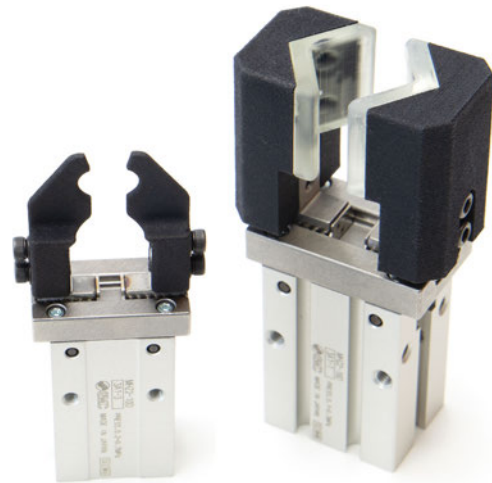
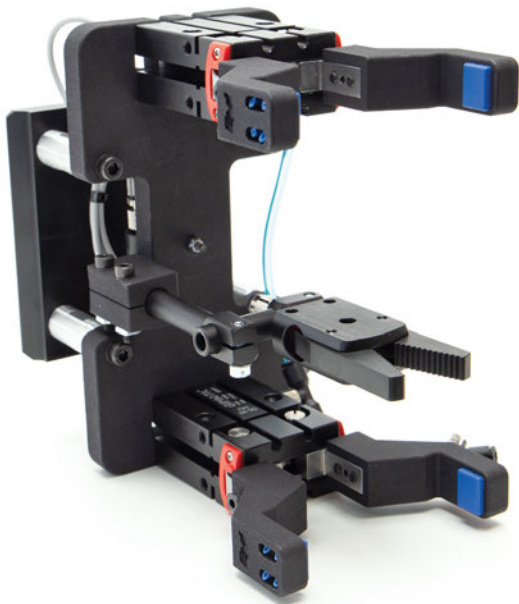


## 3D Printing

Since 2013, EMI's engineers have been utilizing Additive Manufacturing in robotic handling applications for the automotive, medical, consumer goods and plastic injection molding industry.

As an industry leader in robotic End-of-Arm-Tooling (EOAT), we have found new, innovative ways to approach the traditional EOAT application. From custom nests to advanced hybrid gripper fingers, EMI is continually pushing the limits of 3D printing to support automation in the plastic injection molding industry.

Our EOAT Engineers understand the additive manufacturing process from design to post processing and installation because it is done in-house with quality checks in every step of the way. We have found ways to take additive manufacturing to the next level with complex designs that are used in real world, industrial applications.

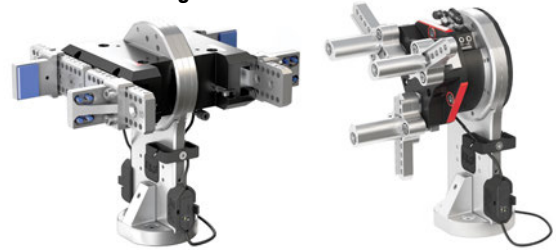


**Take Stock EOAT Components to the Next Level with Creative Custom 3D Printing!**



**EOAT for Cobots****EMI's Focus on Collaborative Robot End Effectors**

EMI's years of experience in automation applications have proved that we can provide the perfect solution for a wide variety of industrial end effector and custom cobot gripper kit needs. EMI's many gripping options – from pneumatic to electric combined with our quick changers and mounting interfaces make these kits perfect for Collaborative Robots. Our engineers have outfitted many of our industry-proven pneumatic and electric grippers to easily adapt to, and maximize the utility of Cobots.

**Manual & Automatic Quick Changers****Vacuum Grippers for Cobots****Soft & Specialty Grippers for Cobots****Machine Tending****Handling Grippers for Cobots****Accessories for Cobots**

This product group has grown so large it has its own catalog!

Request a copy of our 'EOAT for Cobots' or view the interactive catalog with pricing and product links online!

## Quick Changers

Senvex®/WGS, Gimatic®, and >ASS<® quick tool changers are the best manual tool changers available with thousands in use in North America and throughout the world. They feature the most accurate positioning, fastest and easiest locking, standard integrated air porting, and optional electrical connectors. The dovetail >S< style tool changers are also available in a variety of sizes—with or without air fittings.



### Storage Hangers



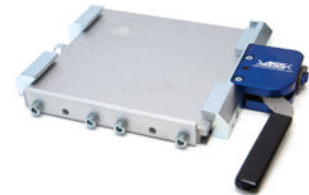
### Mounting Plates



### Gimatic Dovetail Styles



### >ASS< Dovetail Styles



### QC Centering Pins



### Star® Quick Changers

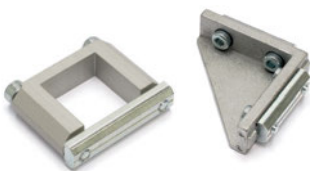


## >ASS< Framing

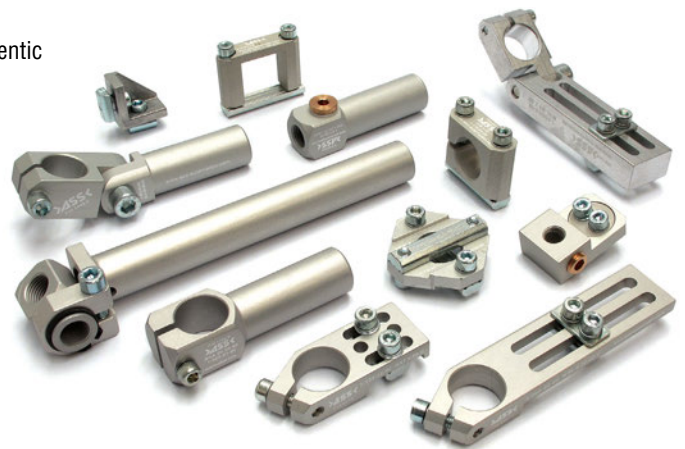
Designed and manufactured in Germany, >ASS< has been building end-of-arm tooling components since 1984. Relied upon for years by many of the world's largest robot users, these components are known for their exceptionally high quality and innovative engineering.

EMI stocks the complete line of >ASS< EOAT components. These are the authentic components made by the original manufacturer. We have them in stock in the U.S. and Mexico available for immediate shipment.

### Cross & Angle Connectors



### Profile



### Heavy Duty Elbow Arms



### Long Angle Profile Clamps



### Micro Series



## Gimatic Framing

Gimatic profile and framing are interchangeable with other style EOAT framing components. Good quality, good pricing with the widest variety of components not available elsewhere. These components can help you get the job done at a comparable price, using fewer pieces and reducing overall weight.



>ASS< Brackets and Channel Nuts work with Gimatic Profile

Gimatic Brackets and Channel Nuts work with >ASS< Profile

### Profile



### Angle Joint Connectors



### Cross Joint Connectors



### Threaded Mounting Brackets



### Angle & Elbow Connectors



### Arms for Vacuum Cups



### Clamps



### Vacuum Connectors

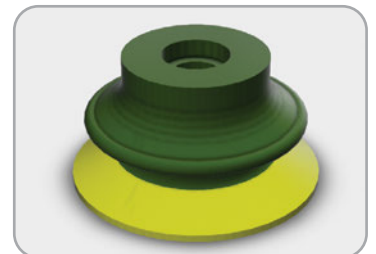


## EMI CAD File Library

Building your own EOAT? Download the 3D CAD files you need to ensure an accurate design. Our EOAT CAD Library has over 4,200 components and is updated daily.

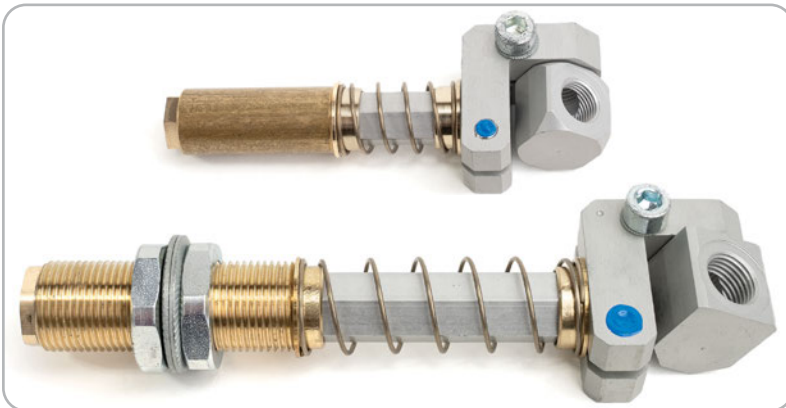
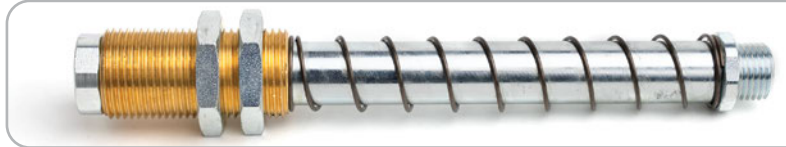
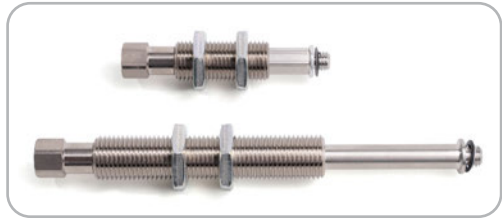
Download all or individual files, or preview them by Quick# with EMI's 360° Viewer before downloading with no need to sign in.

Need help with your EOAT Design? Give us a call or contact Sales@EMICorp.com and one of our engineers will gladly help.



## Suspensions

The widest, most complete variety of suspensions is available from EMI. Whether you prefer an internal spring or an external spring, rotating or non-rotating, threaded or smooth body, straight or adjustable angle head, M-thread (metric) or G-thread (BSPP), male or female threaded connections—EMI has them in stock. Here is a small sample:



**Gimatic Rotating and Non-Rotating Suspensions**





## Vacuum Cups

Only EMI gives you this wide of a selection of in-stock vacuum cup brands specifically suited for use on EOAT. Mix and match vacuum cups to best suit your application. Use our website to quickly search over 700 different EOAT vacuum cups. Our engineers are experts in vacuum cup automation and are happy to answer any questions to help you select the option that is right for your application.

### Cups for Carbon Fiber



### Star®



### Foam



### Oval



### Paper & Foil



### Mini



### Piab®



### Hithane®



### SMC®



### Hi-Speed



### Anti-Static



### >S< Style



### Senvex®



### OEM Replacement



### Gimatic



### Shortec® with Larger Lip



### 1.5 & 2.5 Bellow Dual Durometer Duraflex®



## Sprue Grippers

EMI offers the largest in-stock selection of sprue grippers for end effectors and End-of-Arm Tooling with models from Senvex®, >ASS<®, Harmo®, Gimatic® and more. We offer a complete selection of mounting brackets, sensors, replacement parts, and rebuild kits. When selecting the best EOAT gripper for your application, grip force, weight, durability, size, sensor capability and other features are all factors for you to consider. You can also contact our EOAT engineering department for assistance.

### The Senvex Original



### High Power Sprue Jaws



### Gimatic Compact Grippers



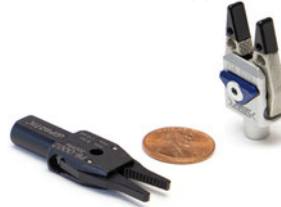
### >ASS< Full Body Grippers



### >ASS< Compact Grippers



### Micro & Nano Grippers



### Mini Grippers



## Gripper Fingers

Gripper fingers are ideal for gripping parts when vacuum cups cannot be used or when a standard gripper is impractical. Typically, these are implemented at the edges of parts in addition to vacuum cups. Once the EOAT is in place, the finger swings out and grips the part's edge. We have a large variety of EOAT gripper fingers, tilt units, and gripper finger accessories in stock for your application needs.



### Guides and Backstops



### Gripper Fingers with HNBR Pads



### Hybrid Gripper Fingers



## Specialty Grippers

Some applications require a special gripper to tackle the job. Whether you require a Needle Gripper to handle textiles, easy to use Electric Grippers that require no programming, or an ID Gripper, EMI has it! We offer a wide range of specialty grippers including Mini Grippers, Dock & Locks, Lightweight ID Grippers, Magnetic Grippers, and more. If you require help to properly size one of these unique grippers or have questions, our engineers are happy to answer your questions.

### Magnet Grippers



### ID Grippers



### Gimatic Electric Grippers

### Needle Grippers



### Expansion Grippers



### Finger Blanks for Mini Grippers



### Dock & Lock Gripper



## General Purpose Grippers

We have utilized customer feedback and our many years of industry experience to collect an immense variety of General Purpose Grippers. Self-centering parallel grippers and angular grippers are available in double acting, NO, and NC configurations. If you are searching for general grippers for smaller parts, compact and miniature grippers are also available.

Should you need any assistance while selecting grippers, please reach out to one of our engineers for expert guidance and suggestions.

### Low-Profile Parallel Grippers



### SMC Grippers



### Gimatic General Purpose Grippers



## Air Cylinders & Slides

Slide it, index it, clamp it—this section of EOAT air cylinders and EOAT pneumatic slides is filled with components for moving, clamping, and streamlining your application process. Each option has been expertly engineered to increase the overall efficiency of plastics applications. Many of our components are small and lightweight—the perfect fit for use on EOAT. Many more designs feature long strokes or high force which are suitable for use in secondary automation cells off of EOAT.

**Vacuum Cylinders**



**Compact Cylinders**



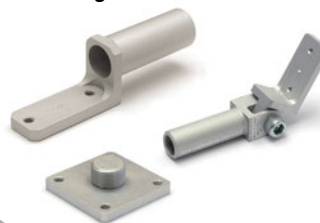
**Cylinders with Arms**



**Compact Cylinders**



**Mounting Brackets**



**Gripper / Nipper Slide**



**Clampable Mini Cylinders**



**Clampable Cylinder**



**Guided Cylinder with Clamp**



**Guided Cylinder for Profile**



**Parallel Gripper Finger**



**Mini Slides**



**Low-Profile Slides**



**Precision Slides**



## Rotaries

EMI stocks rotary actuators for a wide variety of industrial uses, including pneumatic rotary actuators intended for use on EOAT. These specific actuators feature low profiles and high torque, and are especially well-suited for use in the plastics industry.

**Two & Three Position Rotary Units**



**Rotary Indexing Tables**

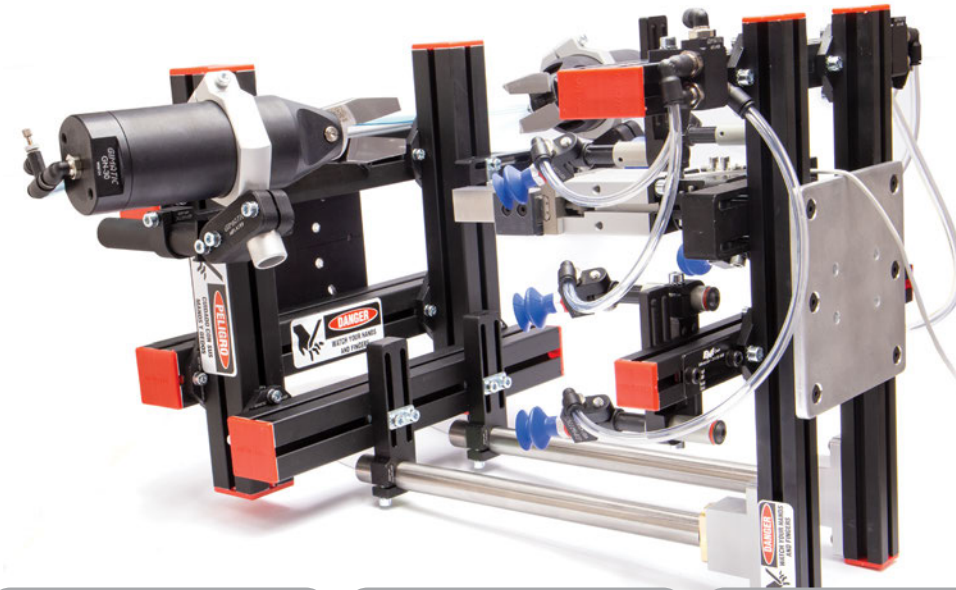


## Nippers & Blades

When designing EOAT for plastic injection molded parts, sprue and gate cutting is often the most challenging part of the process. The space is usually tight and the cut needs to be of good quality with minimal vestiges.

EMI has the largest selection of nippers and blades available anywhere, so you have the “most tools in the tool box” to make your degating EOAT successful. The nipper section of our catalog includes a wide assortment of nipper bodies and blades, mounting brackets, spare parts, and application examples to guide you. Every part in the catalog links back to our e-commerce so you can easily add items to your cart as you browse.

### EMI Specializes in Custom Degating Applications



**Vessel Nippers**



**Nile Nippers**



**Gimatic Nippers**



**Swanstrom Nippers**



**OEM Nippers**



**Sliding Nippers**



**Mounting Brackets**



**Degating Alignment Pins**



**Blades for Plastic Cutting**



**Blades for Metal Cutting**



**Blade Holders**



**Thrust-Cut Nippers**



**Replacement Parts**



**Blade Covers**



## Tubing & Fittings

EMI has a wide selection of tubing, fittings, adaptors, reducers, manifolds, and accessories—specifically sizes and styles that are used for robots and EOAT applications. Here, the standard is G threads and metric threads, just like what is used on robots. Additionally, we have a wide selection of fittings to adapt and convert to/from G, M, or NPT.

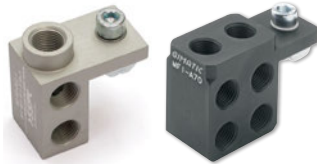


**Threaded Push-In Fittings**

**Manifolds with Integrated Fittings**



**Manifolds**



**Tubing**



**Barbed Fittings**



**Adaptors and Plugs**



**Push-In Fittings**



## Valves & Regulators

EMI's selection of valves and regulators are compact and light to be used on EOAT. The Parker Moduflex valve system has the modular building blocks and flexibility to create the pneumatic systems needed for your EOAT applications. Because it is lightweight enough to be mounted on EOAT, you can increase your robot's pneumatic circuits for more complex EOATs.

**Pressure Regulators**



**Mini Pressure Regulators**



**Vacuum Generators**

**In Line Solenoid Valve**



**Flow (Speed) Control**



**Flow Controls**



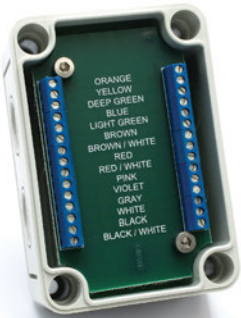
**Modular Valves**



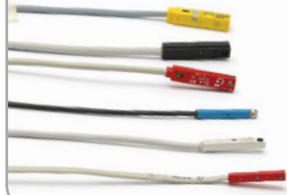
**Sensors & Electrical**

NPN, PNP, reed, inductive, magneto-resistive, 2-wire, 3-wire, fiber-optic, capacitive and contact sensors . . . EMI makes “sense” of it all. Use EMI’s combination sensor box to mix and match sensors on the same tooling! PNP and NPN signals can be all or selectively converted. Multiple boxes can be connected by wiring in series without a voltage drop. LED indicators make configuring and troubleshooting easy. Make sensing easy, call EMI!

**Sensor & Microprocessor Boxes**



**Sensors for EOAT**



**Teachable Sensors**



**Fiber-Optic Sensors**



**Photo Sensors**



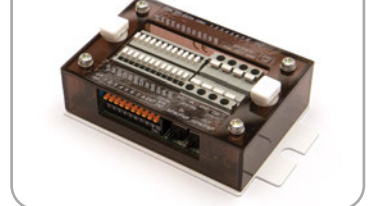
**Mini Photo Sensors**



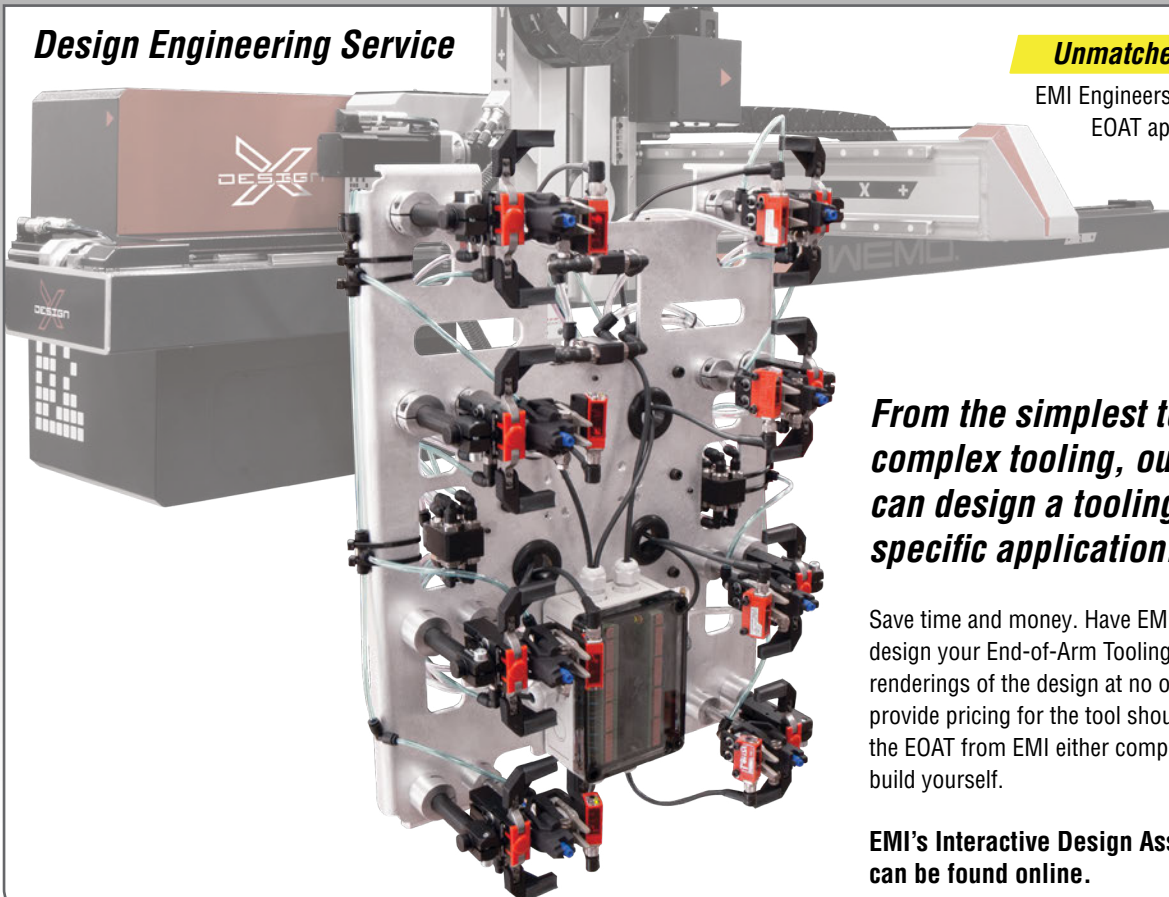
**Sensor Cables & Connectors**



**Sensor Boxes**



**Design Engineering Service**



**Unmatched Product Support!**

EMI Engineers are ready to answer your EOAT application questions!

**From the simplest to the most complex tooling, our EOAT engineers can design a tooling to suit your specific application.**

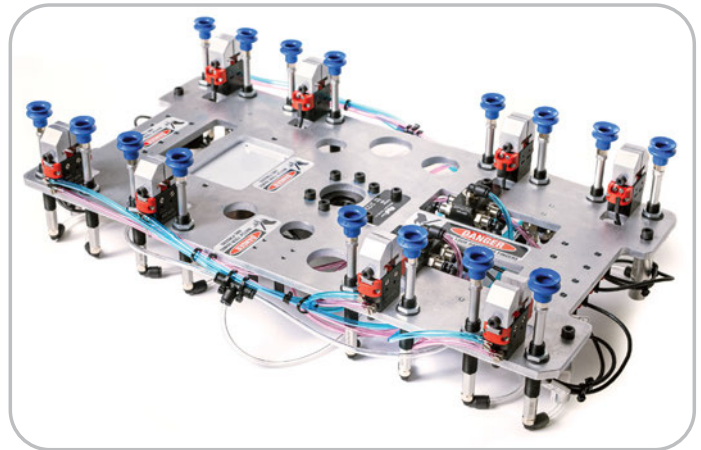
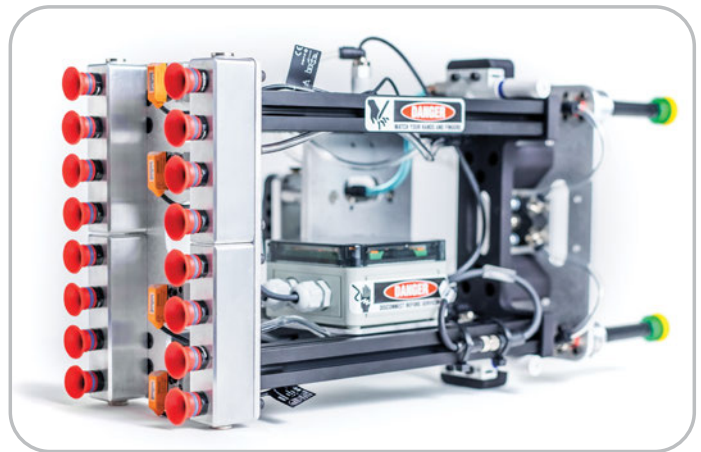
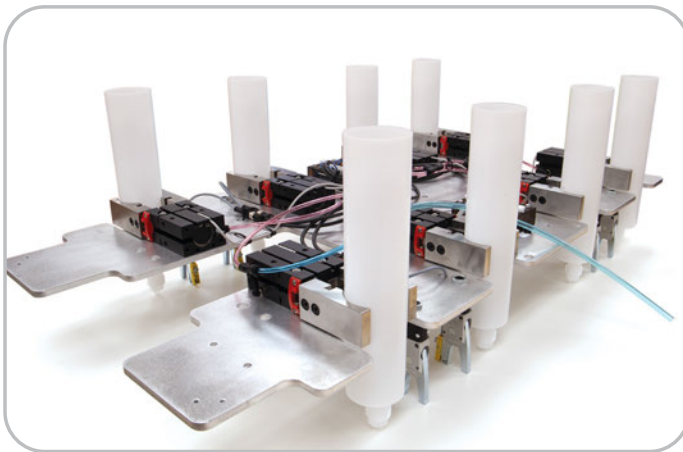
Save time and money. Have EMI’s experienced engineers design your End-of-Arm Tooling. You’ll get 3D CAD renderings of the design at no obligation. We’ll also provide pricing for the tool should you want to purchase the EOAT from EMI either completely assembled or to build yourself.

**EMI’s Interactive Design Assistance Datasheet can be found online.**

## *EMI's Engineers Evaluate and Design Specifically for Your Application*

***Give us a call and let us help you. Email: [Sales@EMICorp.com](mailto:Sales@EMICorp.com) or Call: 216-535-4848***

Designs typically take 2–4 weeks from the time we have all the required information. EMI can manufacture custom items, such as robot mounting plates and 3D printed parts and fingers, to meet your complete EOAT requirements. Interactive datasheets can be downloaded from our website. Send files to: [Sales@EMICorp.com](mailto:Sales@EMICorp.com) or upload them to our FTP site: [www.emicorp.sharefile.com/share/filedrop](http://www.emicorp.sharefile.com/share/filedrop)



### ***Suitable Applications:***

- Plastic Handling
- General Assembly
- Packaging and Box Filling
- Palletizing
- Plastic Secondary Operations (Degating, packaging, assembly)
- Machine Tending (CNC Mill, lathe, laser engraving)





## Customer-Focused Engineering

### *Lets talk EOAT!*

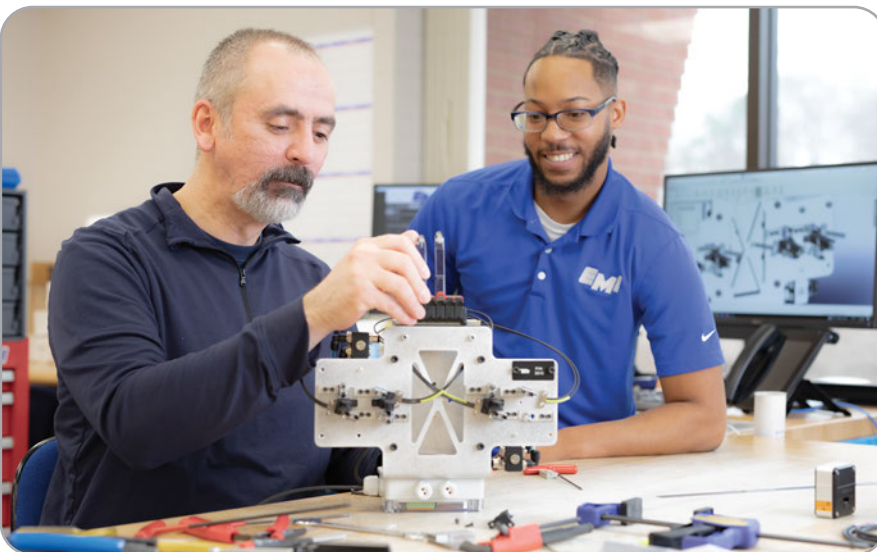
EOAT Engineers are available via phone, email, chat or video call. They will work with you on a degating test, vacuum cup recommendation, cobot kit demo, 3D printed fingers or your next multi-EOAT project set.



## EOAT Experts

### *EMI does EOAT in a big way!*

Design assistance is meant to suggest a possible design assembly, so there may be some tweaks or modifications to be made once you have built the tooling. EMI's in-house Engineering department of 17 EOAT engineers is dedicated to supporting all your needs. No question is too small and no project has been too large.



## EOAT Build Service

### *Get expert assembly by EMI and save time!*

Get the benefit of a reliable, professionally built EOAT when you have EMI's experienced technicians assemble your tool. Many customers find that EMI's complete design and build service is the most economical solution. Take the assembled EOAT out of the box and install it on your robot.

## Request our Comprehensive EOAT Catalog!

Over the years, EMI has established itself as a leading authority in the plastic molding and EOAT robot tooling industries, and we're only continuing to grow. We use our comprehensive expertise to perform a wide range of services for our clients, from supplying ready-to-use components from the leading manufacturers, to providing complete custom-designed components and build services.

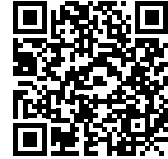
Convenient online ordering and CAD file downloads are available for most products simply by registering for an account. EMI's experienced engineering department is dedicated to help design and support all your EOAT and Cobot needs. We're easily accessible, friendly, and helpful. Give us a call and let us help you.



2001 EOAT Catalog; 112 pages



2022 EOAT Catalog; 1020 pages



Request a EMI EOAT Catalog

January 2022 • [Contact Us](#)

**Teachable PRO Sensors for EOAT**

Complete Monitoring of Gripper Jaw Position  
Less wires, Less wiring  
One Sensor, 3 positions

**Teachable 3-Position Sensors for EOAT**

Gimatic PRO-SS and PRO-SN sensors are digital magnetoresistive sensors with up to 3 programmable output signals, for example: gripper fully open, gripper fully closed, and part gripped. **Highly accurate, this sensor is ideal for part confirmation/mid-stroke detection for any size gripper.**

Gimatic PRO-SSR sensors have 3 output signals, 2 of which are programmable while the third is driven by a NOR logic gate. These are useful in instances when the sensing position may vary; simply teach the sensor the outer limits (open and closed positions) and the third output will activate when neither signal 1 or 2 are active. **Perfect for sprue applications where the sprue sizes can differ and part picking where the part size can change depending on position.**

Shop Now  
In Stock - Ready to Ship

**Features:**

- Easy single button programming.
- Ideal for applications where space is limited and multiple output signals are needed.
- For Gimatic C shaped sensor slots and fixed in place with set screw.
- Each output can be independently configured to Normally Open or Normally Closed and is clearly identified by LEDs.
- Wide +/- 30mm sensing range (relative to the magnet and the sensor).

## Stay In Touch With Us!

### Subscribe to our Monthly Newsletter!

Our Engineers are constantly researching new products that are applicable to your processes. Subscribe to our Newsletter to stay informed!

### Connect with us on LinkedIn

We've found that LinkedIn is a useful forum for us to share ideas, tips and more while also staying connected with friends and associates as they move and grow. Follow us today!

### Visit and subscribe to EMI's YouTube channel to watch the latest videos on our EOAT products!

We are constantly adding new content to our YouTube page. From product overviews to in-depth how-to videos, we are sure you'll find our video's helpful.

## Find Replacement Parts Online!

**1879 Gimatic Mini Sprue Gripper - Normally Open**

- Higher grip force than other similarly sized sprue grippers.
- Serrated fingers hold small and medium sprues firmly.
- Ø10mm diameter mounting post with M5 air port allows this gripper to be used with standard mounting and air connection components. Alternate M5 air port on front of gripper can be used.

Item #:PB 0014  
\$103.00 Each

Quantity:

**Add To Cart**

Available: In Stock  
Technical Specifications  
Additional Specifications  
CAD File Download  
360 Degree View

**Overview** | Technical Specifications | Dimensional Drawing

- This new part# replaces the GSG-PB-0014S. The gripper remains the same.
- 48g
- Normally Open
- 3-9mm Applicable Sprue
- 14.5lbf Lbs. Force at tooling length (Measured at jaw pivot point).

**Related Items**



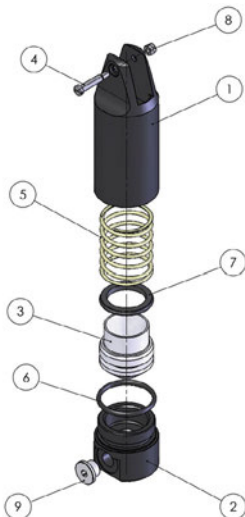
**Parts for 1879 Gimatic Mini Sprue Gripper - Normally Open**

Enter the quantity for each needed part and click add to cart

No.	Part No.	Item Description	Qty Req.	Price	Qty
n/a	PB 0013 20	Gimatic PB Gripper Replacement Main Spring	0	\$3.29 Each	<input type="text"/>
n/a	BB 12 05	Replacement Piston Top	0	\$2.68 Each	<input type="text"/>
n/a	BB 12 06	Replacement Piston Bottom	0	\$2.68 Each	<input type="text"/>

**Add To Cart** **Print Parts List**

**Spare parts can be found on many Senvex & Gimatic product detail pages. Exploded Views & Spare Parts are listed at the bottom of the page.**



Spare parts for the Gimatic Nipper #1902: Purchase spare parts separately, or together as the Service Rebuild Kit.

**Parts for 1902 Gimatic Nipper Round Body Size 10**

Enter the quantity for each needed part and click add to cart

No.	Part No.	Item Description	Qty Req.	Price	Qty
3	GN 10 03	Piston for Gimatic Nipper GN-10	0	\$25.69 Each	<input type="text"/>
5	GSN GN 10S MS	6561 Main Spring for Gimatic Nipper GN-10(S)	0	\$2.72 Each	<input type="text"/>
6,7	KIT1 GN10S	Seal Kit for Gimatic Nipper GN-10S, GN-10	0	\$2.86 Each	<input type="text"/>
4	GSN GN10S BMP	2595 Blade Mounting Pin for GN10S	0	\$4.20 Each	<input type="text"/>
8	GSN GN5135 BMN	2598 Blade Mounting Nut for GN 05(S) & GN10(S)	0	\$0.50 Each	<input type="text"/>
9	107 G1 8	Internal Hex Threaded Plug	0	\$2.41 Each	<input type="text"/>
4,5,6,7,8	GSN GN10 RK	2076 Rebuild Kit for Gimatic GN-10 & GN-10S	0	\$7.25 Each	<input type="text"/>

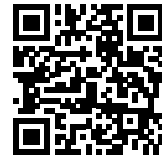
**Add To Cart** **Print Parts List**



[youtube.com/EMICorpVideo](https://youtube.com/EMICorpVideo)

## Visit and subscribe to EMI's YouTube channel

We are constantly adding new content to our YouTube channel. From product overviews to in-depth how-to videos, we are sure you'll find our video's helpful.



[EMICorp.com](https://EMICorp.com)



216.535.4848



Live Chat



[Sales@EMICorp.com](mailto:Sales@EMICorp.com)