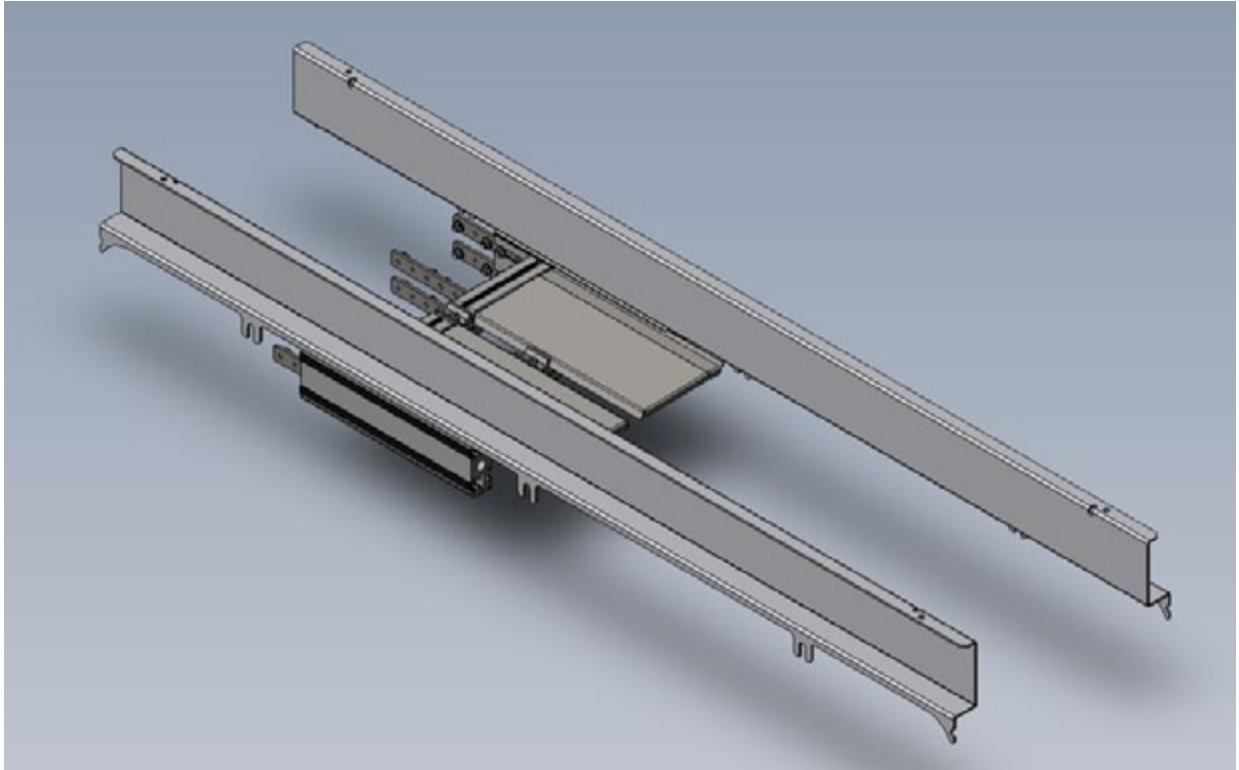


EA Conveyor Frame Extension Installation Instructions

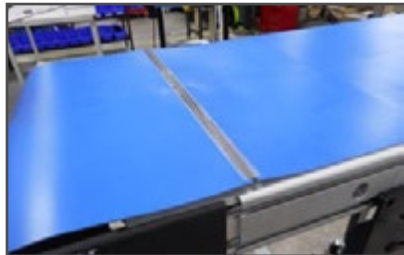


EA Conveyor

Frame Extension Installation Instructions



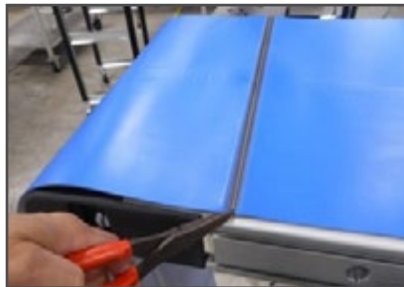
(Fig. 1)



(Fig. 2)



(Fig. 3)



(Fig. 4)



(Fig. 5)

1. Loosen Torx bolts and remove conveyor side rails. (Fig. 1)
2. Run conveyor and position lacing on the upper surface of conveyor. (Fig. 2)
3. Remove black plastic cap at tail (non-drive) end of the conveyor exposing the take-up bolt. (Fig. 3)
4. Tighten bolts to pull the black take- up into the conveyor creating slack in the conveyor belt. (Fig. 3) Use caution to complete this step at tail end only. DO NOT adjust at the drive end of conveyor.
5. With slack in conveyor belt the lacing can now be removed. (Fig. 4)
6. Remove belt from conveyor, This will expose the slide trays on the upper portion of the frame.
7. Remove the ¼-20 flathead screws holding the slide bed retainers in place. Retainers and slide beds can be removed at this time. (Fig. 5)

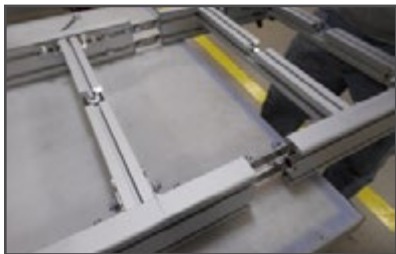
EA Conveyor Frame Extension Installation Instructions



(Fig. 6)



(Fig. 7)



(Fig. 8)



(Fig. 9)



(Fig. 10)

8. Loosen the ¼-20 bolts in the frame connection plate holding the tail section to the main frame. Loosen at the tail side only allowing connection plate to stay with the main frame. (Fig. 6)
9. The tail section can now be separated from the main frame.
10. Slide extension kit frame over existing connection plates. (Fig. 7)
11. Install (4) connection plates in external side of extrusion. (Fig. 8)
12. The frame connection plates must be centered between the two frame sections and secured using ¼-20 setscrews. (Fig. 9) Install plate's in 4 places.
13. Insure that the frame sections are seated against each other and tighten all ¼-20 bolts (inside) and ¼-20 setscrews (outside)
14. Install (4) connection plates on the inside of the tail extrusion and lightly snug the ¼-20 bolts.
15. Install tail section. (Fig. 10) Tighten all fasteners.

EA Conveyor Frame Extension Installation Instructions



(Fig. 11)



(Fig. 12)



(Fig. 13)



(Fig. 14)

16. Re-install original slide beds and new section slide beds. (Fig. 11)
17. Fasten in place using original and new slide bed retainers. (Fig. 12)
18. After initial tightening retainers must be seated by hitting retainer with a dead blow hammer. (Fig 13) Screw can be re-tightened after seating. Insure retainer does not extend above the slide bed surface or damage may occur to the conveyor belt.
19. Install short belt section to original conveyor belt by sliding lacing pin through lacing. (Fig. 14)
20. Repeat lacing pin installation in second lacing (final belt connection.) (Fig. 14)
21. Set conveyor belt tension using the operators manual beginning on page 14 at paragraph 6.
22. Install new rails using the operators manual beginning on page 36.