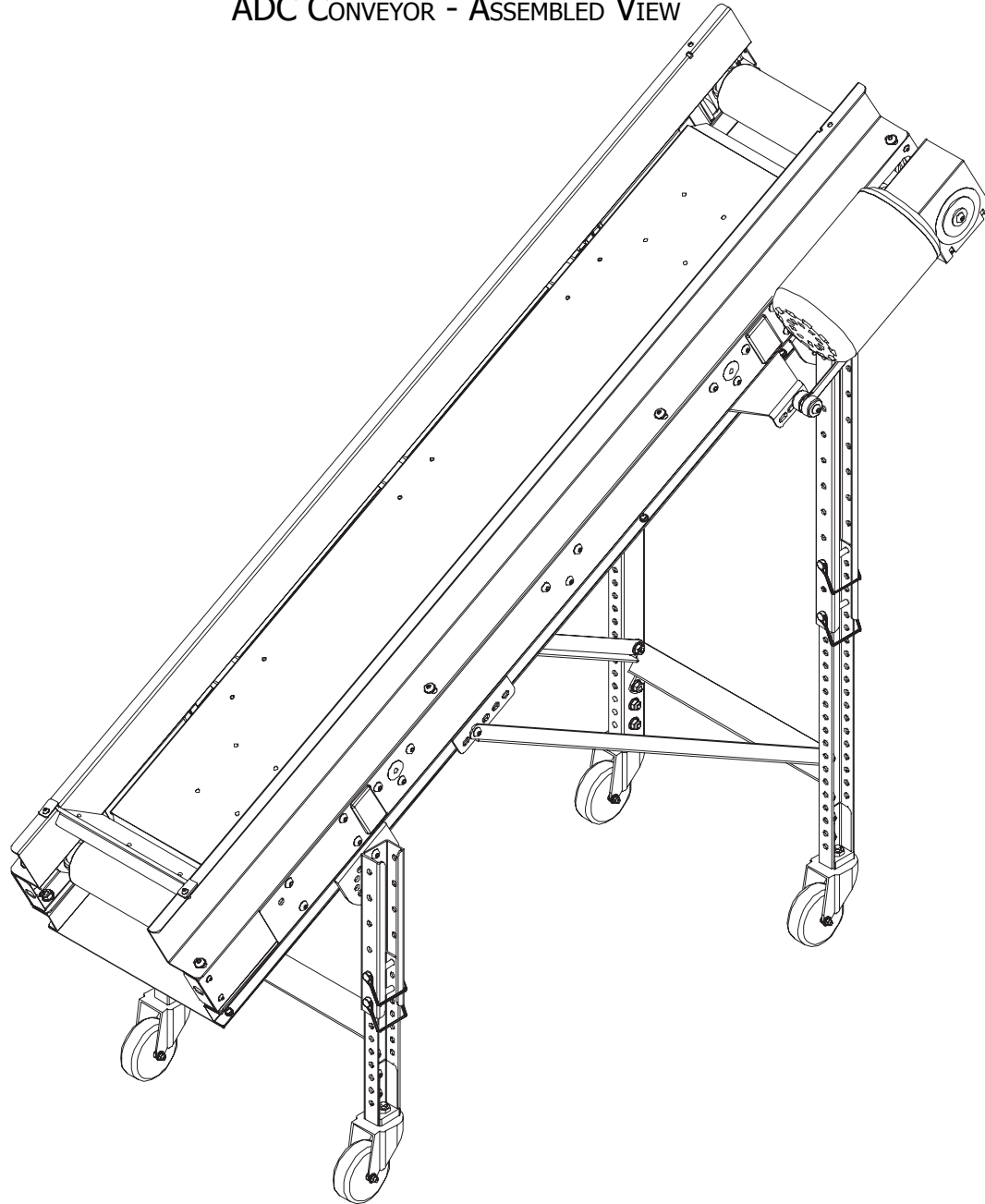


**SECTION VIII. PARTS LISTS AND 3-D DRAWINGS**

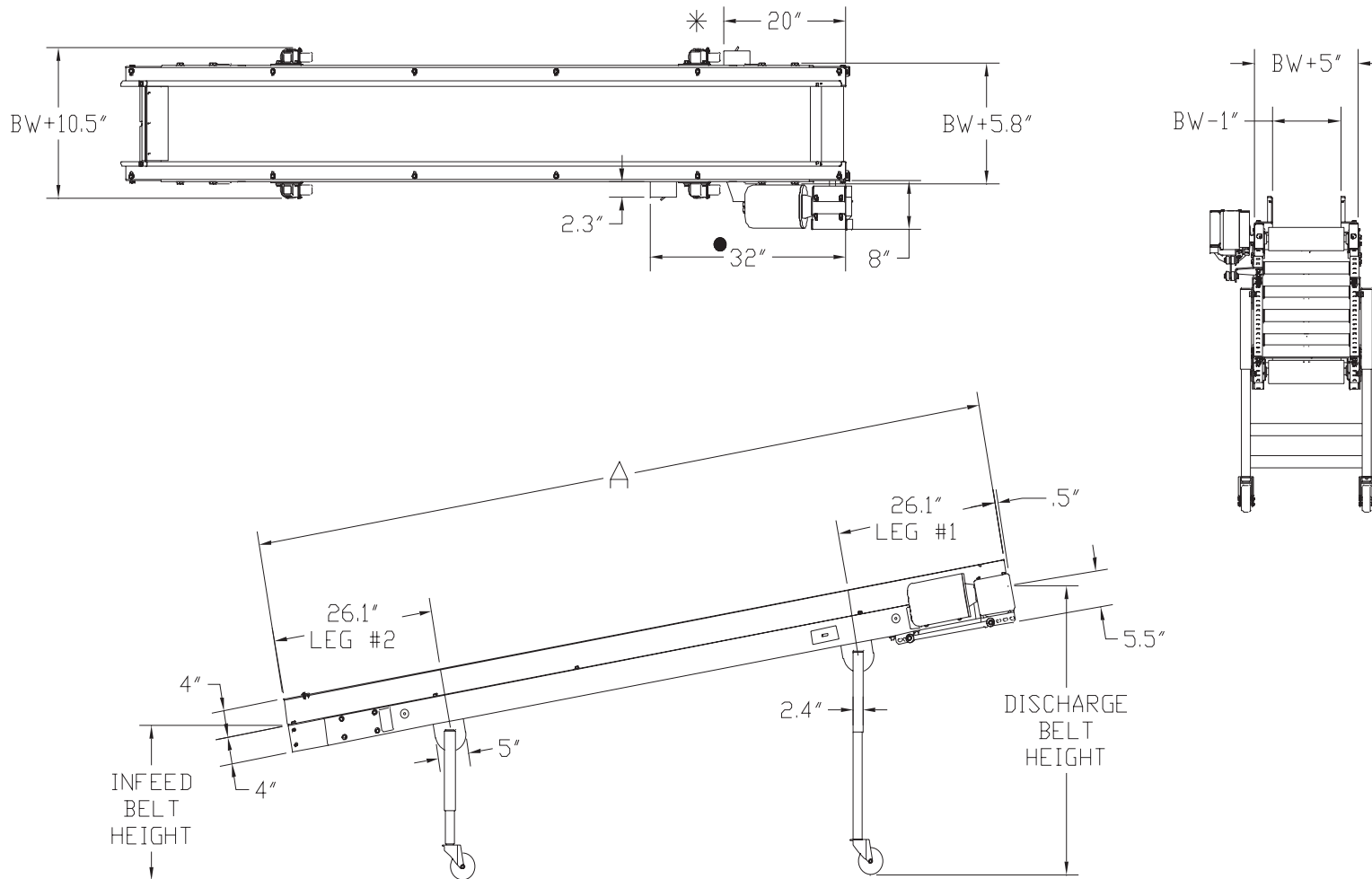
ADC CONVEYOR - ASSEMBLED VIEW



# SECTION VIII. PARTS LISTS AND 3-D DRAWINGS

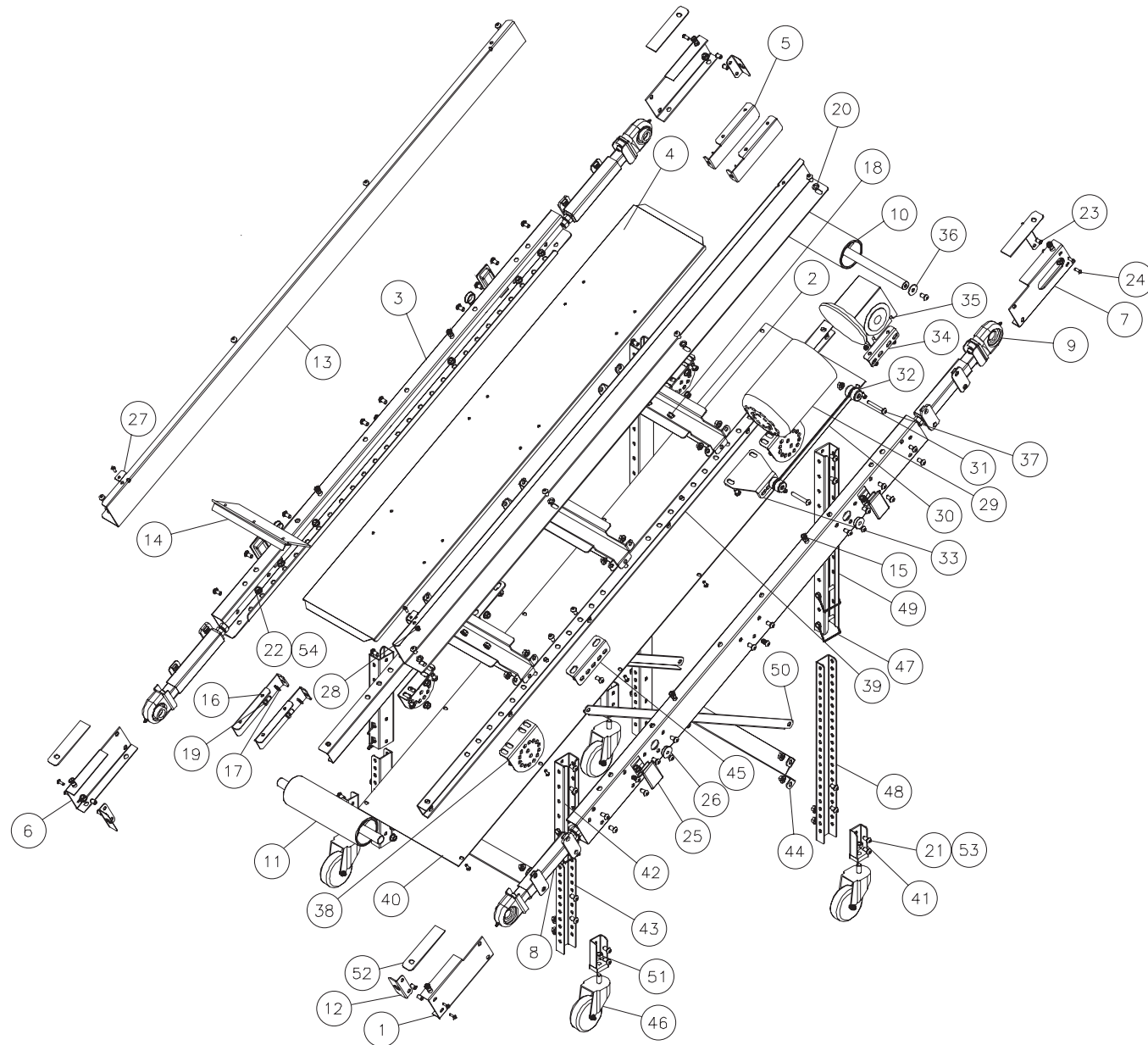
## ADC CONVEYOR - CATALOG VIEW

- STANDARD STARTER POSITION (SPECIFY IF OTHER LOCATION.)
- \* STARTER POSITION FOR 8' OR SHORTER CONVEYORS
- LEG SET #1 WILL BE LOCATED UNDER DRIVE PACKAGE FOR 3'-6' LONG AND 6"-9" WIDE CONVEYORS
- BW=BELT WIDTH



**SECTION VIII. PARTS LISTS AND 3-D DRAWINGS**

ADC CONVEYOR - EXPLODED VIEW



## ADC CONVEYOR PARTS LIST

ITEM	QTY	PART DESCRIPTION	EMI P/N	ITEM	QTY	PART DESCRIPTION	EMI P/N
1	2	RH PULLEY GUARD	4M-08-1-R	28	16	1/4-20 HEX NUT	CP-3297
2	3	CROSS BRACE	4M-41-1-W	29	1	MOTOR	See BOM
3	2	FRAME SIDE	See BOM	30	1	REACTION ROD	2M-38-1
4	1	SLIDE TRAY	See BOM	31	4	3/8 FLAT WASHER (FENDER)	CP-671-B
5	4	SLIDE TRAY END SUPPORT	4M-29-1	32	2	RUBBER MOUNT	CP-3178
6	1	LH PULLEY GUARD	4M-08-1-L	33	1	REACTION ROD BRACKET	2M-14-29
7	1	DRIVE SIDE PULLEY GUARD	4M-08-2-L	34	1	REACTION ROD BRACKET	2M-14-28
8	2	TAKE UP ASS'Y	2M-232-1	35	1	GEARBOX	See BOM
9	2	DRIVE END TAKE UP ASS'Y	2M-232-4	36	1	3/8 WIDE FENDER WASHER	CP-671-B
10	1	DRIVE PULLEY	4M-210-1-W	37	2	3/8-16 x 2-1/2 BUTTON HEAD CAP SCREW	CP-3296
11	1	TAIL PULLEY	4M-224-1-W	38	4	LEG MOUNTING BRACKET	See BOM
12	4	BEARING COVER	4M-67-1	39	2	BOTTOM BELT GUARD SIDE	See BOM
13	2	SIDE RAIL	See BOM	40	1	BOTTOM BELT TRAY	See BOM
14	1	FLAPPER	See BOM	41	4	LEG ADAPTOR	4M-236-15
15	8	3/8-16 HEX NUTSERT	CP-2856	42	2	LEG EXTENSION	See BOM
16	20	RIVET	CP-2052	43	2	LEG	See BOM
17	4	3/8 WASHER	CP-3342	44	2	LEG EXTENSION CROSS BRACE	See BOM
18	4	3/8-16 HEX NUT	CP-3299	45	2	KNEE BRACE BRACKET	4M-14-11
19	4	3/8-16 x 3/4 HEX BOLT	CP-2890	46	4	CASTOR	CP-1237
20	8	3/8 FLAT WASHER	CP-3342	47	8	CLIP PIN	CP-3301
21	89	3/8-16 x 3/4 BUTTON HEAD CAP SCREW	CP-3293	48	2	LEG	See BOM
22	66	3/8-16 HEX NUT	CP-2869-B	49	2	LEG EXTENSION	See BOM
23	8	1/4-20 HEX NUTSERT	CP-2132	50	2	KNEE BRACE	See BOM
24	24	1/4-20 x 3/4 BUTTON HEAD CAP SCREW	CP-3291	51	4	1/2-13 JAM NUT	CP-508-B
25	4	PLASTIC PLUG	CP-1581	52	4	TAIL SPACER	4M-31-20
26	4	PLASTIC PLUG	EL-395	53	2	3/8-16 x 3/4 BUTTON HEAD CAP SCREW	CP-3293
27	2	FLAPPER CLIP	2E-01-10	54	2	3/8-16 HEX NUT	CP-2869

Part numbers listed in this document are for reference only. When buying replacement parts please provide your conveyor model & serial number to ensure the correct part.