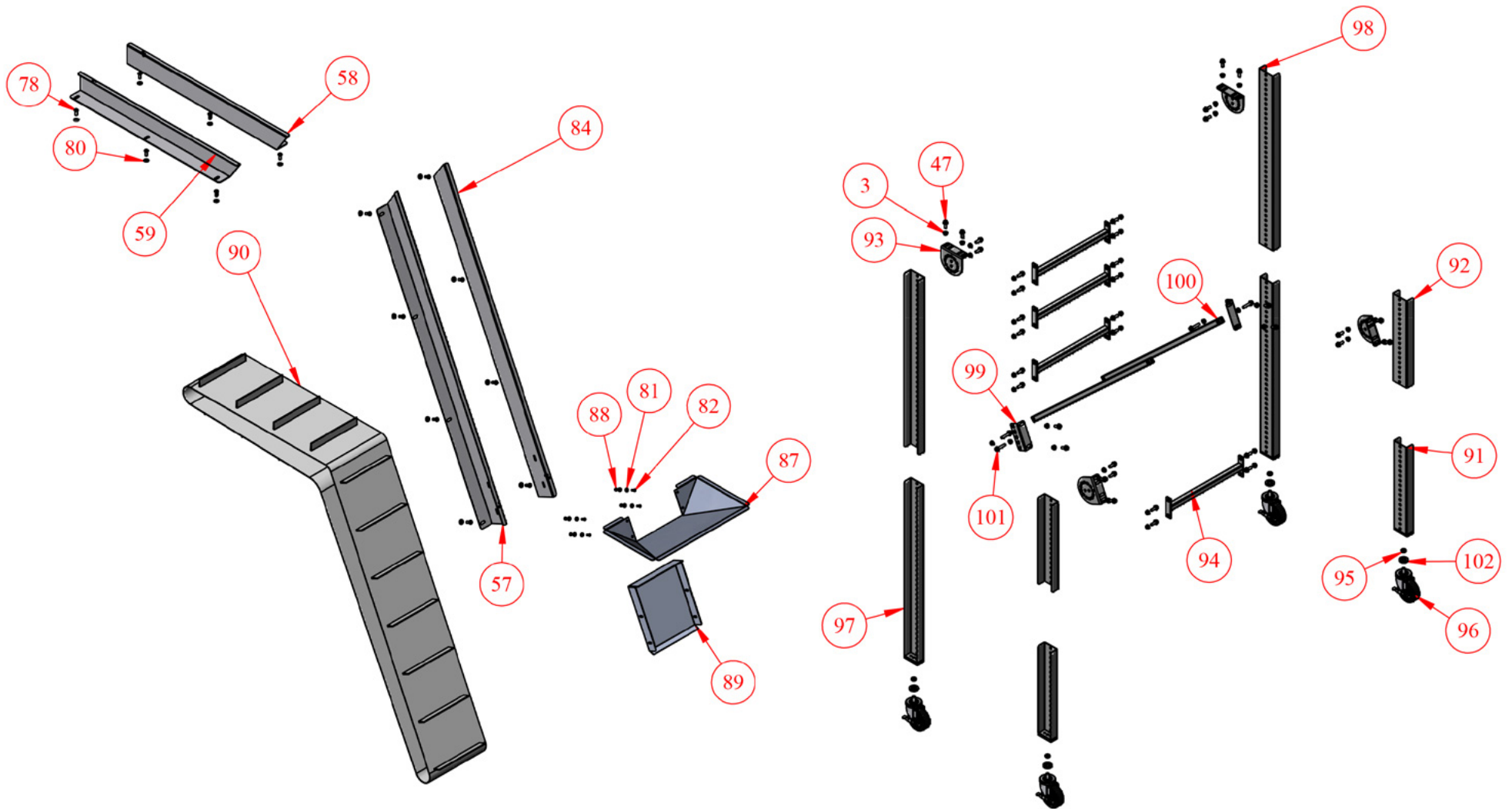
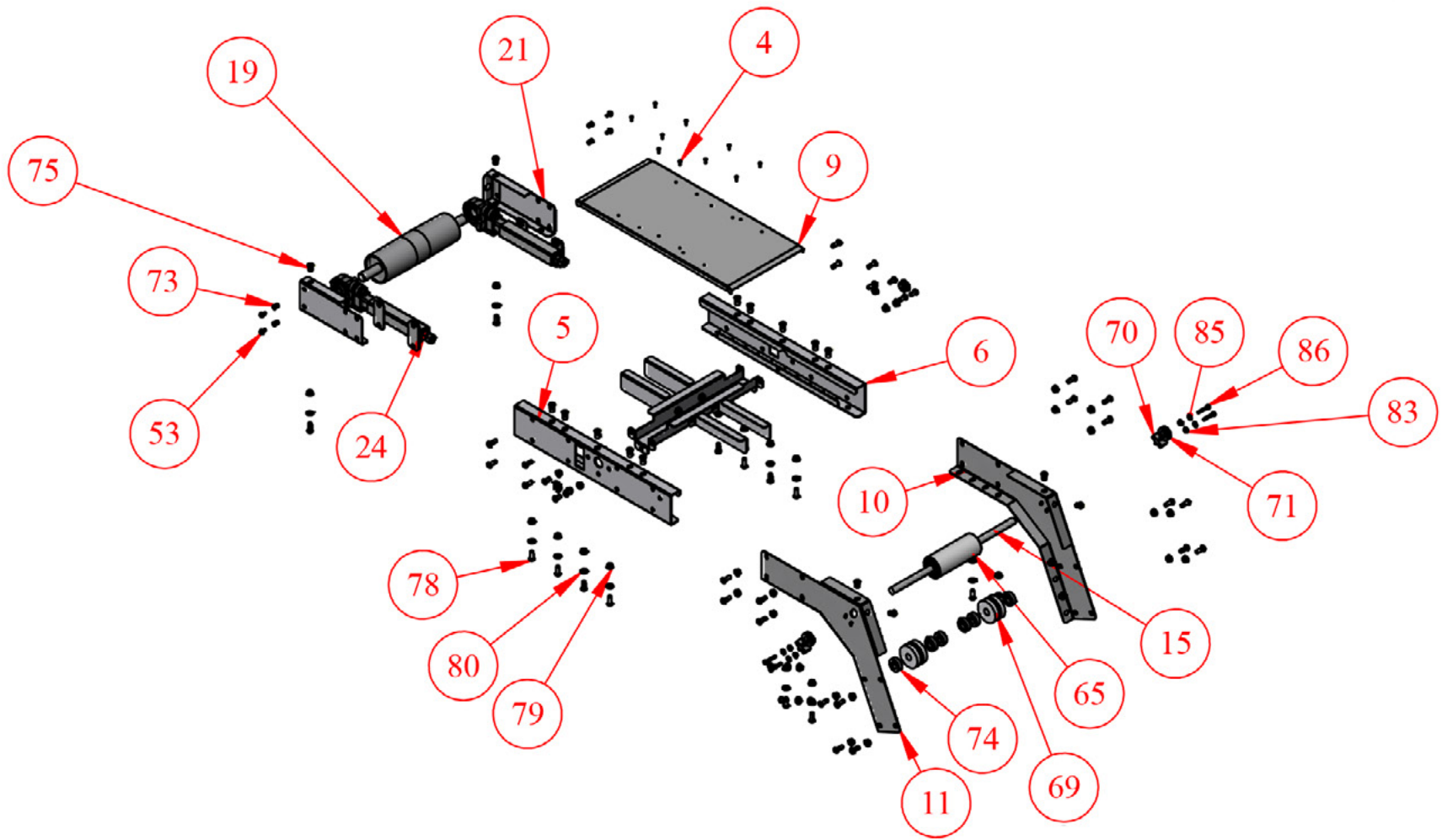


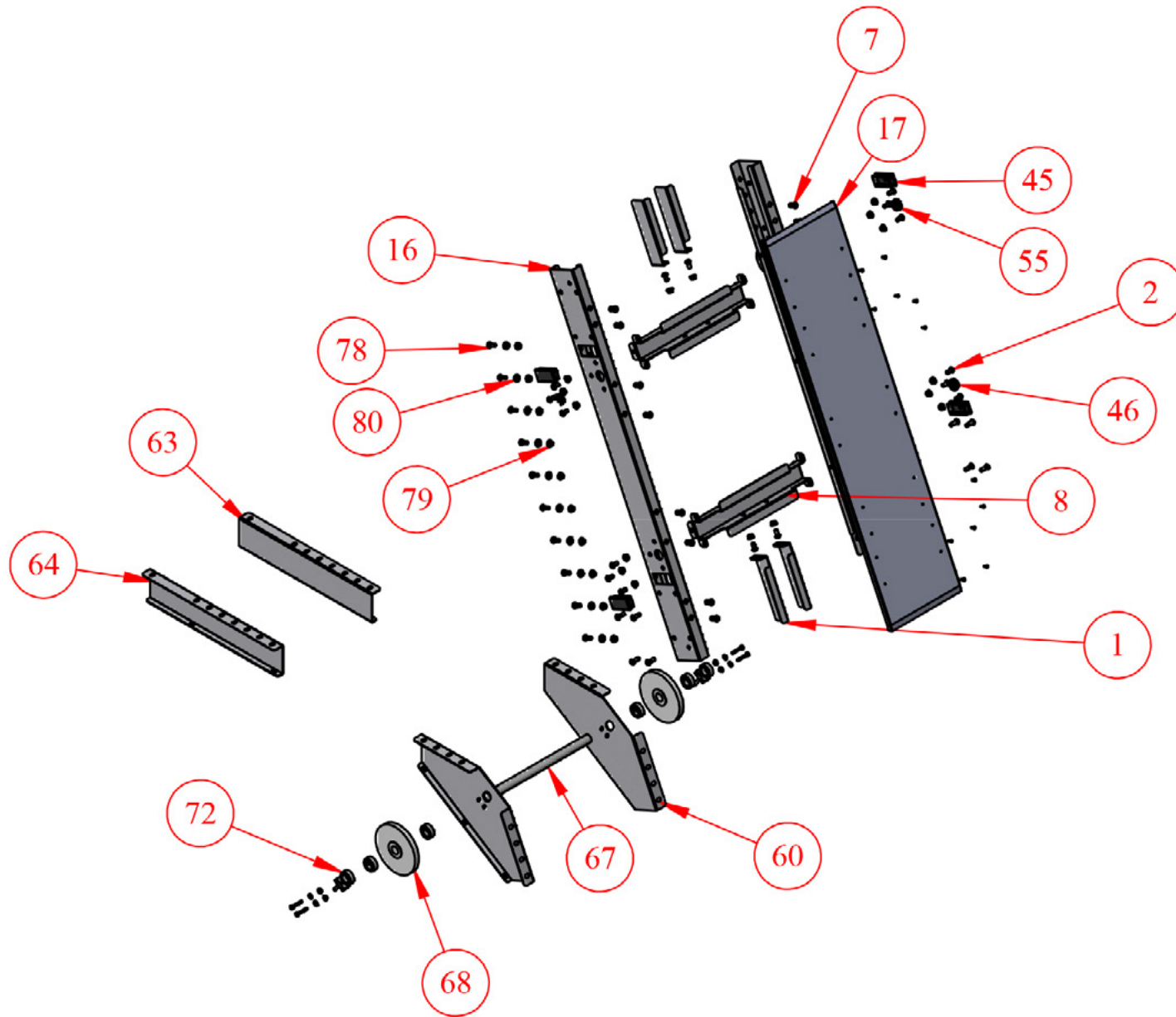
# ANO65 Merit Line Conveyor - Exploded View



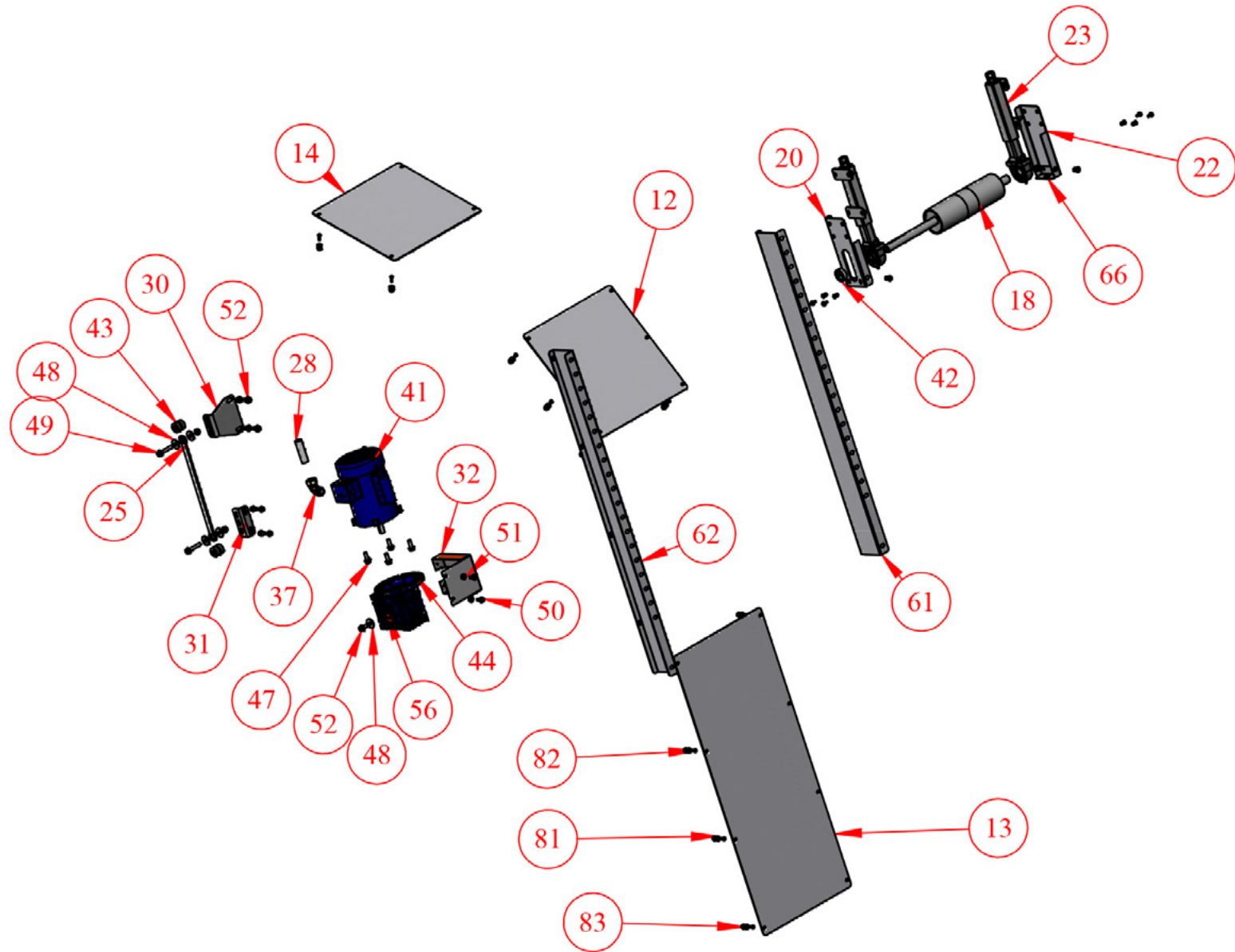
# ANO65 Merit Line Conveyor - Exploded View



# ANO65 Merit Line Conveyor - Exploded View



# ANO65 Merit Line Conveyor - Exploded View



## ANO65 Merit Line Conveyor - Exploded View

NO.	QTY.	PART NO.	DESCRIPTION
1	8	4M-29-1	SLIDE TRAY END SUPPORT
2	26	CP-3293	HEX SOCKET BUTTON HEAD SCREW .375-16 x .750
3	72	CP-2869	SERRATED FLANGE NUT 0.375-16 ZINC PLATED
4	22	CP-2052	POP RIVET 3/16 RIVET, CTRSK HEAD,
5	1	4M-44-2-X	ADK FRAME SIDE
6	1	4M-44-2-X	ADK FRAME SIDE
7	26	CP-2867	HEX NUT INSERT 3/8-16 GRIP RANGE .150-.312 #AH-S- 4-616-312
8	3	4M-41-1-W	FRAME CROSSBRACE
9	1	4M-45-L-W-DV	DV SLIDE TRAY
10	1	ACN-244-1-(L/R)	65 DEG TRANSITION SIDE ASS'Y
11	1	ACN-244-1-(L/R)	65 DEG TRANSITION SIDE ASS'Y
12	1	ACN-08-4-W	BOTTOM BELT GUARD FOR TRANS.
13	1	ACN-08-2-L-W	BOTTOM BELT GUARD FOR INCLINE
14	1	ACN-08-3-L-W	BOTTOM BELT GUARD FOR ITRANS.
15	1	ACN-21-1-W	TOP TRANSITION IDLER ROLLER
16	2	4M-44-L	AD FRAME SIDE
17	1	4M-45-L-W-DV	DV SLIDE TRAY
18	1	4M-210-6-W	WELD ASSY FOR STEEL DRIVE
19	1	4M-224-2-W	WELD ASSY FOR STEEL TAIL
20	1	4M-08-2-(L/R)	PULLEY GUARD
21	1	4M-08-1-(L/R)	PULLEY GUARD
22	2	4M-08-1-(L/R)	PULLEY GUARD
23	2	2M-232-3	TAKE-UP
24	2	2M-232-4	TAKE-UP
25	1	2M-38-1	REACTION ROD
26	1	4E-269-1	BLACK WIRE ASSY FOR STD DRIVE PAK
27	1	4E-269-2	GREEN WIRE ASSY FOR STD DRIVE PAK
28	1	4E-62-1	CONDUIT FOR STD DRV PAK
29	1	2M-14-3	FG-5 SWITCH MOUNTING BRACKET
30	1	2M-14-29	REACTION ROD BRACKET
31	1	2M-14-28-1	REACTION ROD BRACKET
32	1	2M-08-12	050 MOTOVARIO GEARBOX OUTPUT SHAFT GUARD

Part numbers listed in this document are for reference only. When buying replacement parts please provide your conveyor model & serial number to ensure the correct part.

## ANO65 Merit Line Conveyor - Exploded View

NO.	QTY.	PART NO.	DESCRIPTION
33	1	2E-263-1	15' POWER CORD
34	1	EL-533	SQ.D. HEATER A9.85
35	3	EL-455	WIRE NUT "Y" TYPE
36	1	EL-358	APPLETON CORD GRIP CONNECTOR #CG-3150
37	1	EL-353	90 DEG .500 INCH CONDUIT FITTING (REF RACO)
38	1	EL-354	.500 INCH STRAIGHT CONNECTOR
39	3	EL-301	RING TERMINAL 14-16 AWG, #8 (STUD)
40	1	EL-168	SWITCH - FG5 SQ. D.
41	1	EL-116B	LINCOLN LM24598 1/3 HP 115/230/60/1
42	5	CP-1201	LOCKING COLLAR 1.000IDx1.625ODx.625TH
43	2	CP-3178	UNIVERSAL MOUNT (NARROW) #60166-4
44	1	CP-3290	MOTOVARIO GEAR REDUCER #NMRV050-40-56C
45	4	CP-1581	1 1/2 x 3" BLACK PLASTIC CAP
46	2	EL-394	HEYCO SNAP BUSHING #2182
47	40	CP-2939	HEX SERRATED FLANGE SCREW 0.375-16x1.000" ZINC PLATED
48	5	CP-671	FLAT WASHER .407IDx1.250ODx.125TH
49	2	CP-3049	HEX SERRATED FLANGE SCREW 0.375-16x2.000" ZINC PLATED
50	4	CP-2941	HEX SERRATED FLANGE SCREW 0.313-18x0.750" ZINC PLATED
51	4	CP-3786	5/16 FLANGE HEX NUT
52	5	CP-2890	HEX SERRATED FLANGE SCREW 0.375-16x0.750" ZINC PLATED
53	10	CP-3067	HEX SERRATED FLANGE SCREW 0.250-20x0.500" ZINC PLATED
54	2	CP-3068	HEX FLANGE NUT 0.25-20
55	4	EL-395	HEYCO DOME PLUG #2733
56	1	CP-1003	1/4"SQ x 1.500 KEY
57	1	ACN-33-5-L-(L/R)	4"x90° ALUM RAILS
58	1	ACN-33-6-L-(L/R)	4"-90 X 3' ALUM. SIDE RAIL
59	1	ACN-33-6-L-(L/R)	4"-90 X 3' ALUM. SIDE RAIL
60	2	ACN-44-10	TRANSITION SIDE FOR ACN
61	1	ACN-44-3-L-(L/R)	4" BOTTOM SLIDE TRAY SIDE SUPPORT
62	1	ACN-44-3-L-(L/R)	4" BOTTOM SLIDE TRAY SIDE SUPPORT
63	1	ACN-44-4-L-(L/R)	4" BOTTOM SLIDE TRAY SIDE SUPPORT
64	1	ACN-44-4-L-(L/R)	4" BOTTOM SLIDE TRAY SIDE SUPPORT

Part numbers listed in this document are for reference only. When buying replacement parts please provide your conveyor model & serial number to ensure the correct part.

## ANO65 Merit Line Conveyor - Exploded View

NO.	QTY.	PART NO.	DESCRIPTION
65	1	2M-40-2-W	RETURN IDLER
66	4	2M-67-1	BEARING COVER
67	1	3M-21-10-12-ID	ADCNO IDLER SHAFT
68	2	3M-40-5-625	ADCNO RETURN IDLER ROLLER
69	2	4M-15-1-2688-O	SNO TRANSITION IDLER FLANGE
70	4	4M-17-1	BLOCK FOR ADJ. IDLER ROLLER
71	2	4M-232-6	1" COLLAR ASS'Y FOR IDLER
72	2	4M-232-7	3/4" COLLAR ASS'Y. FOR IDLER
73	8	CP-2132	1/4 - 20 AVIBANK NUTSERT
74	6	CP-3671	ONE PIECE CLAMP-ON COLLAR, 3/4" BORE
75	8	CP-2856	HEX NUT INSERT 3/8-16 GRIP RANGE .027-.150 (AKPT6P616)
76	1	CP-1573	SERIAL PLATE, TRIMLINE, 1-7/8 X 4-3/8
77	2	CP-1286	POP RIVET AVEX #1641-0514
78	85	CP-3325	HEX SOCKET BUTTON HEAD SCREW .375-16 x 1.000
79	56	CP-3299	3/8-16 SERRATED FLANGE
80	54	CP-3342	FLAT WASHER .375
81	24	CP-654	FLAT WASHER .250 SAE
82	21	CP-695	HEX SOCKET BUTTON HEAD SCREW .250-20 x .750
83	24	CP-3297	SERRATED FLANGE NUT 0.25-20 BLACK OXIDE
84	1	ACN-33-5-L-(L/R)	4"x90deg ALUM RAILS
85	8	CP-3340	FLAT WASHER .250
86	8	CP-106	HEX HEAD SCREW .250-20 x 1.500
87	1	SNO-275-13-W	HOPPER WELD ASS'Y.
88	4	CP-600	1/4-20 PLATED ELASTIC LOCK NUT
89	1	SNO-75-1-W-CC-RH	SST CLEAT TRAP
90	1	BELT	CLEATED BELT FOR ANO65
91	2	2E-236-X	LEG ASSY WELDMENT
92	2	2E-36-X	LEG EXTENSION
93	4	2M-14-16	LEG MOUNTING BRACKET
94	4	2S-241-2-W	CROSS BRACE
95	4	CP-508	HEX JAM NUT .500-13
96	4	CP-1239	SWIVEL CASTER, 4"X1 3/8"
97	2	2E-236-X	LEG WELD ASSY
98	2	2E-36-X	LEG EXTENSION
99	2	2M-14-11	BRACKET
100	2	4E-41-6	LEG TO FRAME BRACE
101	4	CP-2940	HEX SERRATED FLANGE SCREW 0.375-16x1.750" ZINC PLATED
102	2	4E-31-28	SPACER FOR K-3, K-4 CASTORS