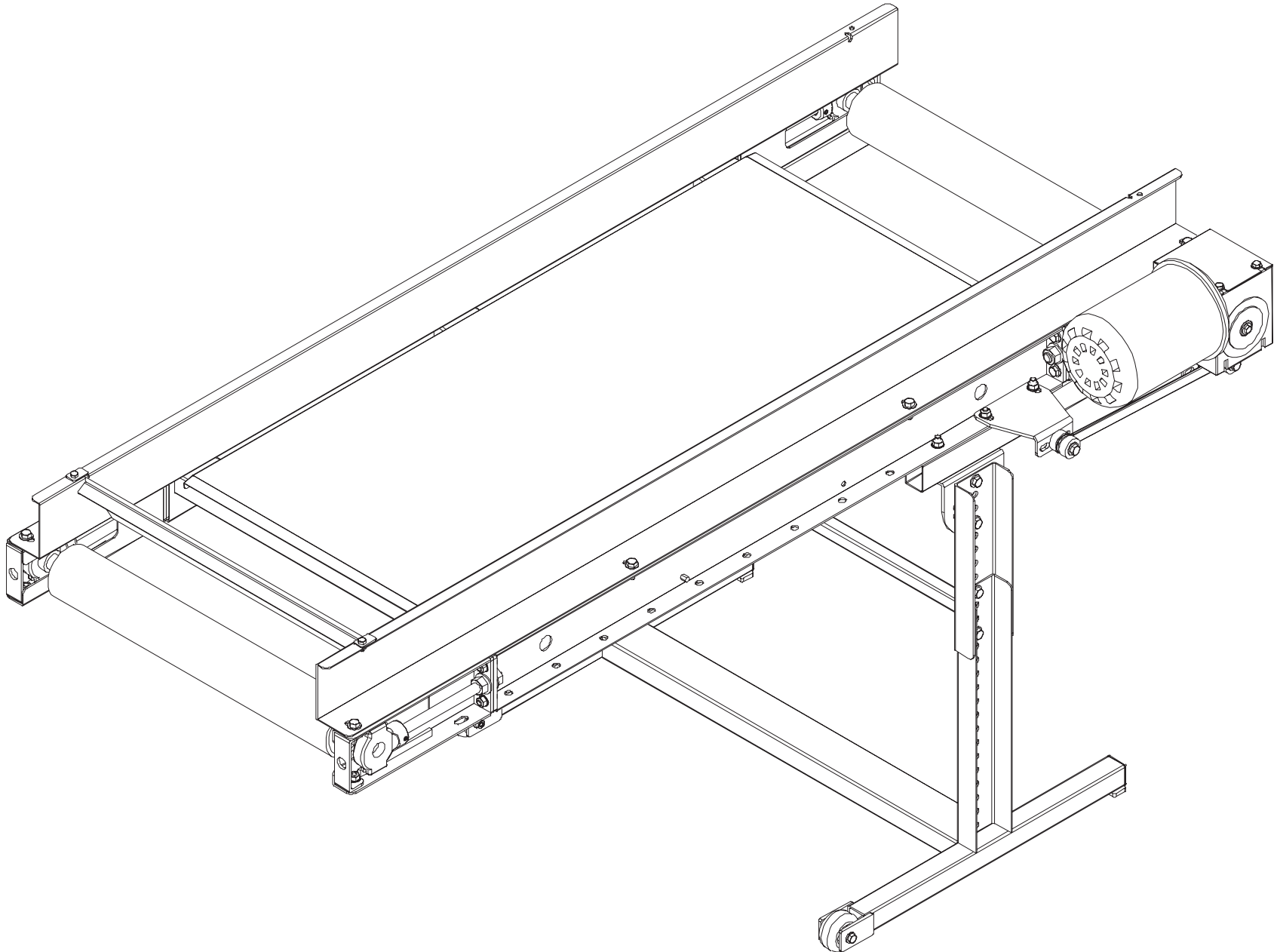


**SECTION VIII. PARTS LISTS AND 3-D DRAWINGS**

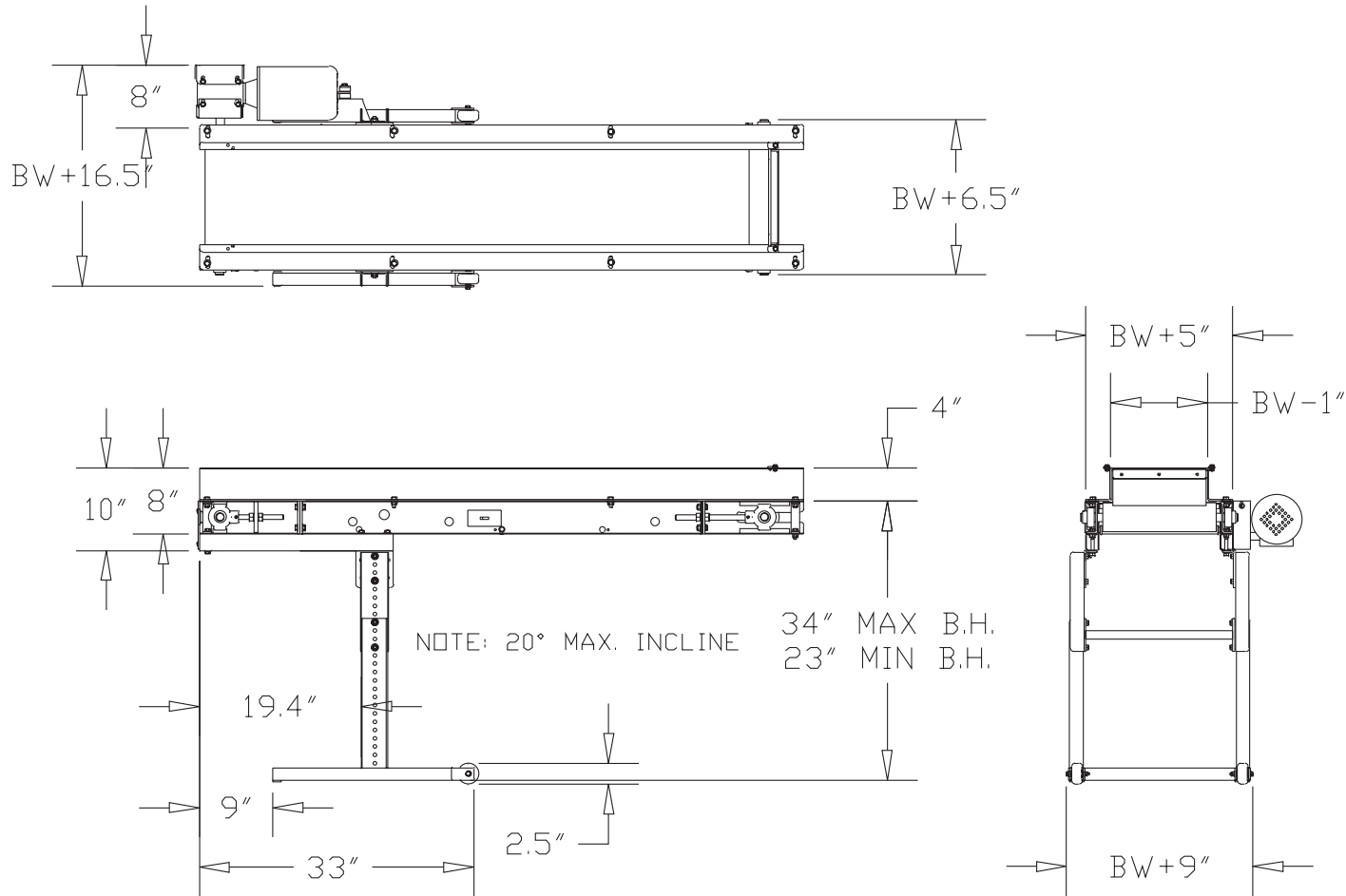
CLR CONVEYOR - ASSEMBLED VIEW



# SECTION VIII. PARTS LISTS AND 3-D DRAWINGS

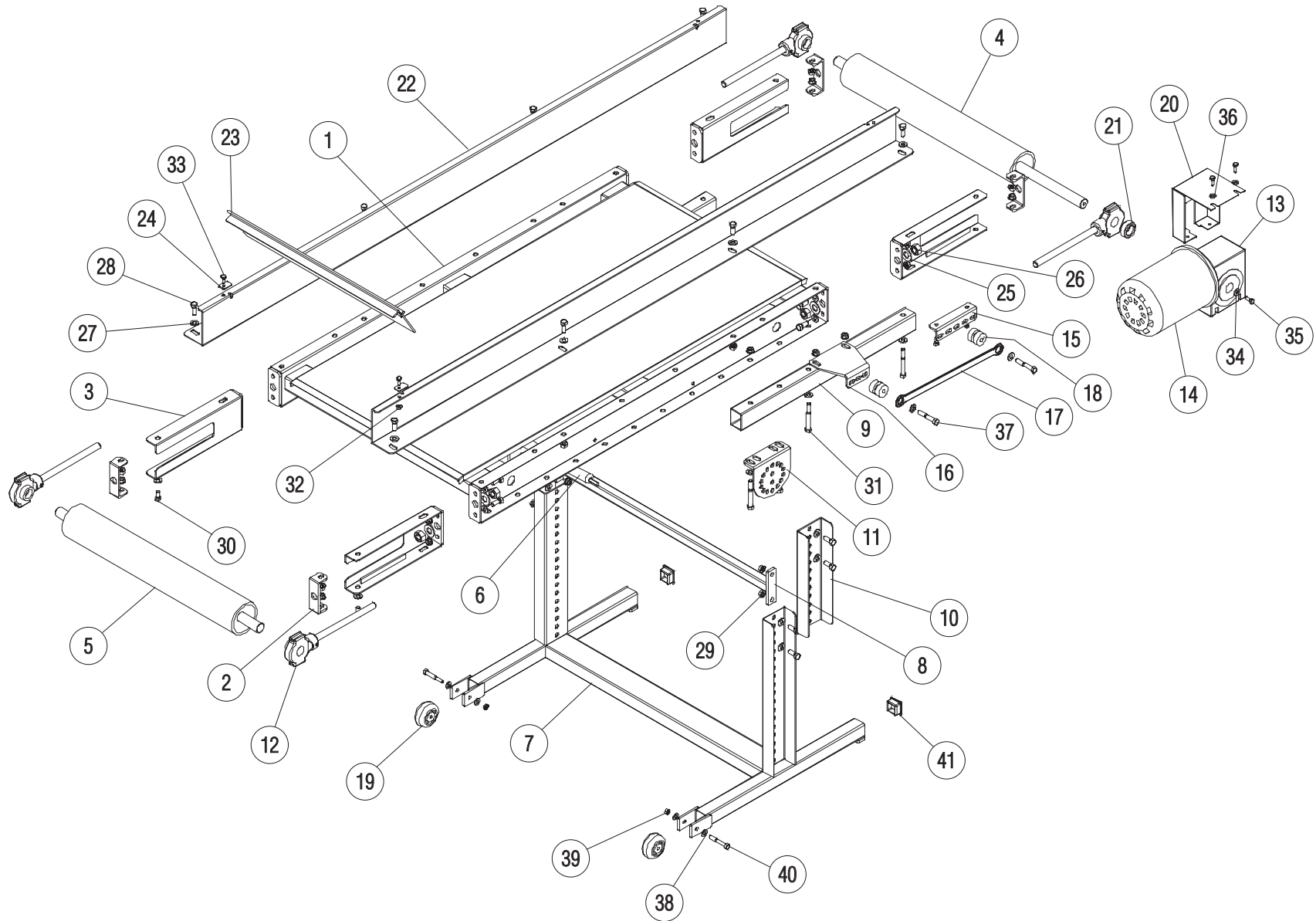
## CLR CONVEYOR - CATALOG VIEW

BW = Belt Width



**SECTION VIII. PARTS LISTS AND 3-D DRAWINGS**

## CLR CONVEYOR - EXPLODED VIEW



## CLR CONVEYOR PARTS LIST

ITEM	QTY	PART DESCRIPTION	EMI P/N
1	1	DRIVE HEAD ASS'Y	4E-204-1-W
2	1	FRAME ASS'Y	4E-206-1-W
3	2	TAIL ASS'Y	4E-258-1
4	2	MOTOR MOUNT SPACER TUBES	4E-31-1
5	2	LEG EXTENSION 12"	2E-36-3
6	1	LEG STAND	4E-236-74-W
7	2	LEG MOUNTING BRACKET	4E-14-3
8	1	LEG BRACE ASS'Y	4E-241-1-W
9	2	SIDE RAIL	4E-33-L
10	1	FLAPPER ASS'Y	2E-249-5-W
11	1	IDLER ROLLER ASS'Y	2E-240-1-W ; 2E-21-3-
12	1	MOTOR AND REDUCER SUPPORT	4E-29-23-W
13	1	CHAIN GUARD	LH - 4E-08-1; RH - 4E-
14	1	CHAIN GUARD COVER	LH - 4E-67-1; RH - 4E-
15	1	MOTOR AND REDUCER	See BOM
16	1	SPROCKET	CP-1295
17	2	DRIVE PULLEY TAKE-UP BEARING	2E-232-3
18	1	DRIVE PULLEY ASS'Y	2E-210-3-W
19	1	SPROCKET	CP-1364
20	4	END BRACKET	4E-14-1
21	8	5/8-11 HEX NUT	CP-505

ITEM	QTY	PART DESCRIPTION	EMI P/N
22	2	TAIL PULLEY TAKE-UP BEARING	2E-232-2
23	1	TAIL PULLEY ASS'Y	2E-224-2-W
24	40	3/8 WASHER	CP-662
25	26	3/8-24 X 1 HEX BOLT	CP-141
26	40	3/8-24 HEX NUT	CP-521
27	10	3/8-24 X 2-3/4 HEX BOLT	CP-167
28	7	1/4 WASHER	CP-654
29	3	1/4-20x3/4 SLOTTED ROUND HEAD CAP SCREW	CP-2305
30	2	FLAPPER CLIP	2E-01-10
31	4	1/4-28 HEX NUT	CP-517
32	4	1/4-20x3/4 HEX BOLT	CP-125
33	4	3/8-24 X 1-1/2 HEX BOLT	CP-127
34	1	IDLER SHAFT	2E-21-3-W
35	2	SPRING PIN	CP-1285
36	2	WHEEL	CP-1290
37	2	5/16-18 X 2-1/2 HEX HEAD BOLT	CP-220
38	3	TINNERMAN	CP-611
39	4	3/8 X 1-1/4 OD WASHER	CP-671
40	4	5/16 FLAT WASHER	CP-659
41	2	5/16-18 LOCK NUT	CP-518
42	1	CHAIN (NOT SHOWN)	2E-40-4

Part numbers listed in this document are for reference only. When buying replacement parts please provide your conveyor model & serial number to ensure the correct part.