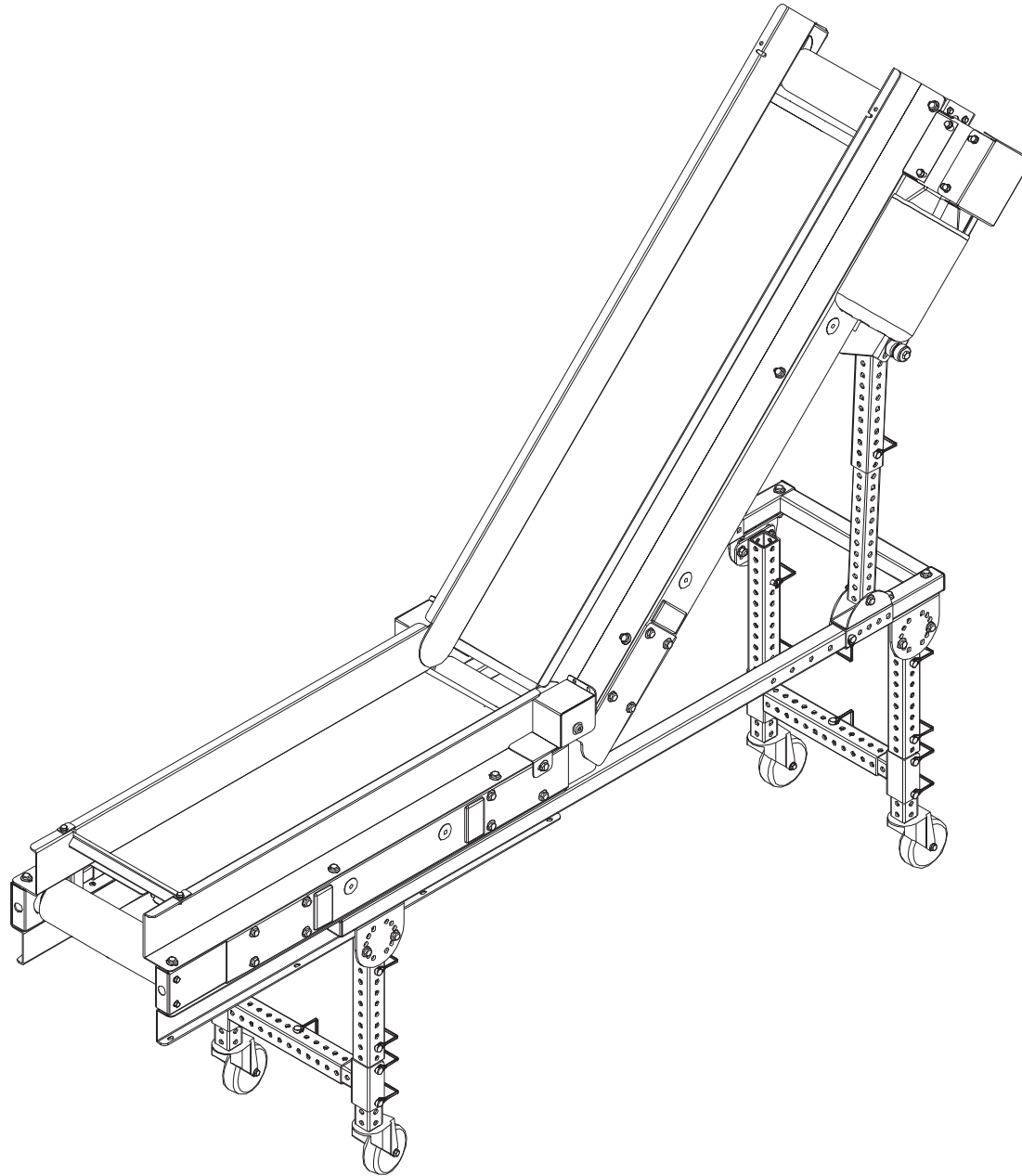


SECTION VIII. PARTS LISTS AND 3-D DRAWINGS

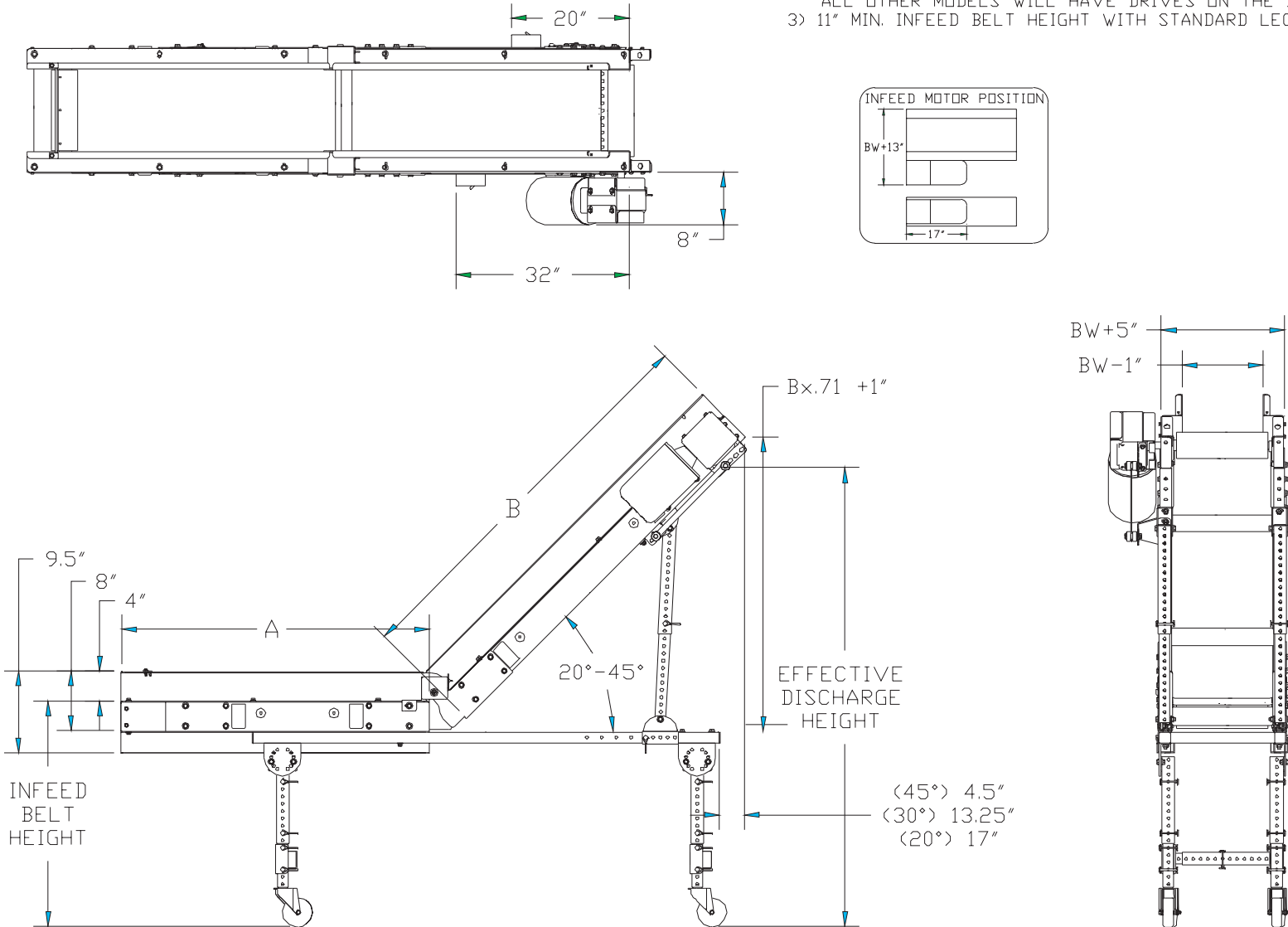
DDK CONVEYOR - ASSEMBLED VIEW



SECTION VIII. PARTS LISTS AND 3-D DRAWINGS

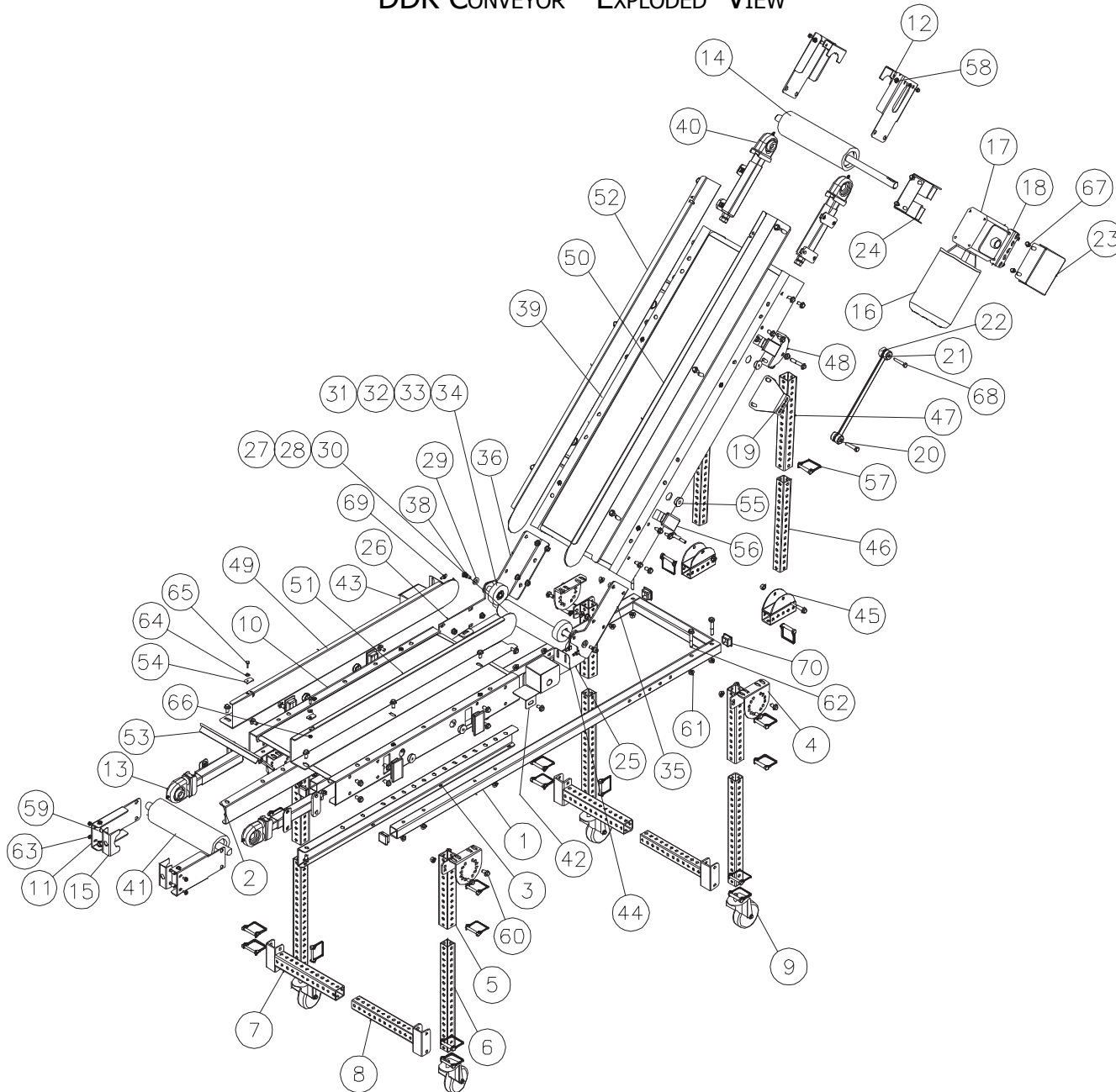
DDK CONVEYOR - CATALOG VIEW

- NOTE: 1) A & B DIMENSION ARE IN 1' INCREMENTS +6"
 2) DRIVE LOCATION SHOWN IS FOR 24" & 30" MODELS ONLY
 ALL OTHER MODELS WILL HAVE DRIVES ON THE DISCHARGE
 3) 11" MIN. INFEED BELT HEIGHT WITH STANDARD LEGS & CASTORS



SECTION VIII. PARTS LISTS AND 3-D DRAWINGS

DDK CONVEYOR - EXPLODED VIEW



DDK CONVEYOR PARTS LIST

ITEM	QTY	PART DESCRIPTION	EMI P/N	ITEM	QTY	PART DESCRIPTION	EMI P/N
1	1	SUB-BASE	2M-241-1-W-L	36	1	R.H. TRANSITION CONNECTING BRACKET	2M-27-7
2	1	L.H. BOTTOM BELT GUARD	2M-44-11-L	37	4	1/2 WASHER	CP-658
3	1	R.H. BOTTOM BELT GUARD	2M-44-12-L	38	2	3/8-16 - 1/2 x 3/8 SOCKET HEAD SHOULDER SCREW	CP-3051
4	4	LEG MOUNTING BRACKET	2M-14-7	39	1	FRAME	2M-206-L-W
5	4	TELESPAR LEG EXTENSION	SEE CHART	40	2	DRIVE BEARING	2M-232-4
6	4	TELESPAR LEG WELDMENT	SEE CHART	41	1	TAIL PULLEY	2M-224-1-W
7	2	ADJUSTABLE LEG BRACE EXTENSION	SEE CHART	42	1	L.H. IDLER GUARD	2M-208-1
8	2	ADJUSTABLE LEG BRACE	SEE CHART	43	1	R.H. IDLER GUARD	2M-208-2
9	4	CASTOR	CP-1239	44	2	ADJUSTABLE TRANSITION IDLER GUARD	2M-08-6
10	1	FRAME	2M-206-L-W	45	2	ADJUSTABLE SUPPORT SLIDE BRACKET	2M-14-23
11	3	PULLEY GUARD	2M-08-1	46	2	TELESPAR LEG	SEE BOM
12	1	DRIVE SIDE PULLEY GUARD	2M-08-2	47	2	TELESPAR EXTENSION	SEE BOM
13	2	TAIL BEARING	2M-232-3	48	2	CONVEYOR TO SUB-BASE MOUNTING BRACKET	2M-229-5
14	1	DRIVE PULLEY	2M-210-1-W	49	1	R.H. INFEED SIDERAIL	2M-33-61-W
15	4	BEARING COVER	2M-67-1	50	1	L.H. DISCHARGE SIDERAIL	2M-33-61-W
16	1	MOTOR	SEE BOM	51	1	L.H. INFEED SIDERAIL	2M-33-62-W
17	1	REDUCER	SEE BOM	52	1	R.H. DISCHARGE SIDERAIL	2M-33-62-W
18	1	REACTION ROD BRACKET (REDUCER)	2M-14-28	53	1	FLAPPER	2E-249-5-W
19	1	REACTION ROD BRACKET	2M-14-29	54	2	FLAPPER CLIP	2E-01-10
20	1	REACTION ROD	2M-38-1	55	8	ROUND PLUG	EL-395
21	2	BLUE UNIVERSAL MOUNT (THIN)	CP-3178	56	8	3 x 1-1/2 PLUG	CP-1581
22	4	3/8 FLAT WASHER	CP-671	57	22	CLIP PIN	CP-2889
23	1	DIRECT DRIVE GUARD (OUTSIDE)	3E-08-794	58	14	3/8-16 NUTSERT	CP-2856
24	1	DIRECT DRIVE GUARD (INSIDE)	2M-08-3	59	8	1/4-20 NUTSERT	CP-2132
25	1	L.H. TRANSITION CONNECTING BRACKET	2M-227-1	60	60	3/8-16 x 3/4 HEX HEAD FLANGE BOLT	CP-2890
26	1	R.H. TRANSITION CONNECTING BRACKET	2M-227-2	61	46	3/8-16 HEX NUT	CP-2869
27	1	IDLER ROLLER SHAFT	2M-21-3-W	62	14	3/8-16 x 2-1/2 HEX HEAD FLANGE BOLT	CP-3050
28	2	IDLER ROLLER SPACER	2M-31-13	63	8	1/4-20 x 1/2 HEX HEAD FLANGE BOLT	CP-3067
29	1	IDLER ROLLER SPACER	2M-31-12	64	2	1/4 WASHER	CP-654
30	2	ROLLER	2M-40-2-W	65	2	1/4-28 x 3/4 HEX BOLT	CP-125
31	2	TRANSITION IDLER WHEEL	2M-15-1	66	2	1/4-28 HEX NUT	CP-517
32	2	SNAP RING	CP-7035	67	6	5/16-18 x 3/4 HEX HEAD BOLT	CP-2966
33	2	SNAP RING	CP-750	68	2	3/8-16 x 2 HEX BOLT	CP-3176
34	2	ROLLER BEARING	CP-7037	69	4	1/4-20 x 1/2 THUMB SCREW	CP-451
35	1	L.H. TRANSITION CONNECTING BRACKET	2M-27-6	70	4	SQUARE PLUG	CP-2924

Part numbers listed in this document are for reference only. When buying replacement parts please provide your conveyor model & serial number to ensure the correct part.