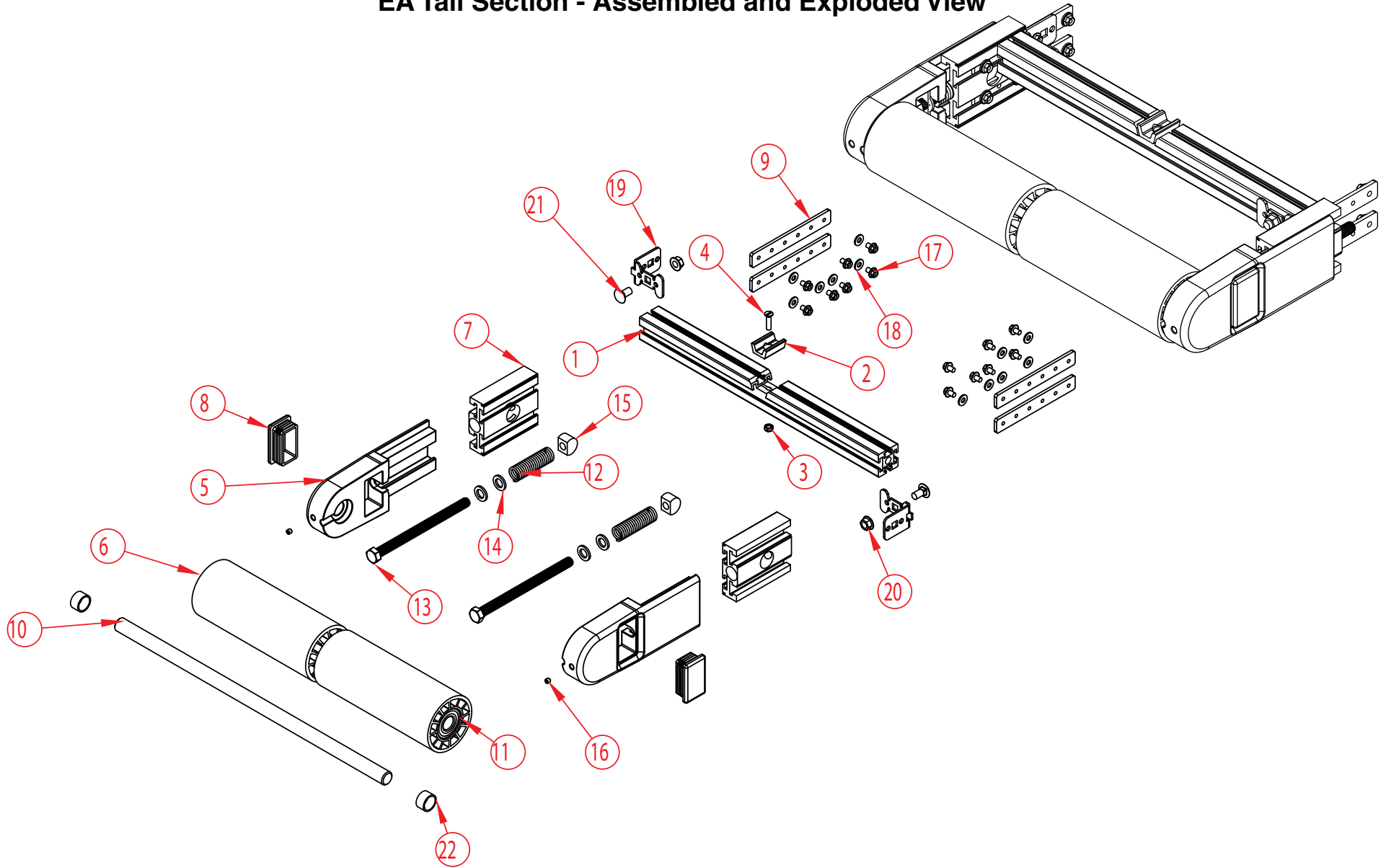


EA Tail Section - Assembled and Exploded View



Section VIII. Parts Lists and 3-D Drawings

EA Tail Section - Parts List

	QTY.	PART NO.	DESCRIPTION
1	1	2X-41-1-W (CF)	FRAME RUNG FOR EA CONVEYOR
2	1	2X-19-1	SLIDE BED RETAINER OR CLAMP
3	1	CP-600	1/4-20 PLATED ELASTIC LOCK NUT
4	1	CP-259	SLOTTED FLAT HEAD SCREW .250-20 x 1.000
5	2	2X-14-1-1	TAKE-UP BRACKET FOR EA CONVEYOR
6	1	2X-24-1-W (CF)	TAIL PULLEY FOR EA CONVEYOR
7	2	2X-35-1-413	TAKE-UP GUIDE FOR TAIL
8	2	CP-3532	PLASTIC CAP 1.500x2.500 RECTANGLE
9	4	2X-27-4	FRAME CONNECTION PLATE
10	1	2X-21-1-W (CF)	TAIL SHAFT FOR EA CONVEYOR
11	2	CP-4592	20MM BALL BEARING SELF ALIGNING
12	2	CP-7234	SPRING, 3/4" O.D. X 6-7/8" LONG
13	2	CP-4509	1/2-13 x 7" HX HD SCREW
14	4	2X-42-1-S	TAKE-UP WASHER SST
15	2	2X-55-1	TAKE-UP NUT FOR EA CONVEYOR
16	2	CP-350	SOCKET HEAD SET SCREW .250-20 x .250
17	14	CP-4564	HEX SERRATED FLANGE SCREW 0.250-20x0.375" ZINC PLATED
18	12	CP-654	FLAT WASHER .250 SAE
19	2	2X-09-1	GUSSET FOR FRAME CROSS BRACE
20	2	CP-2869	SERRATED FLANGE NUT 0.375-16 ZINC PLATED
21	2	CP-457	CARRIAGE BOLT .375-16 x .750
22	2	CR-31-27-14	25mm O.D. DRIVE SHAFT SPACER