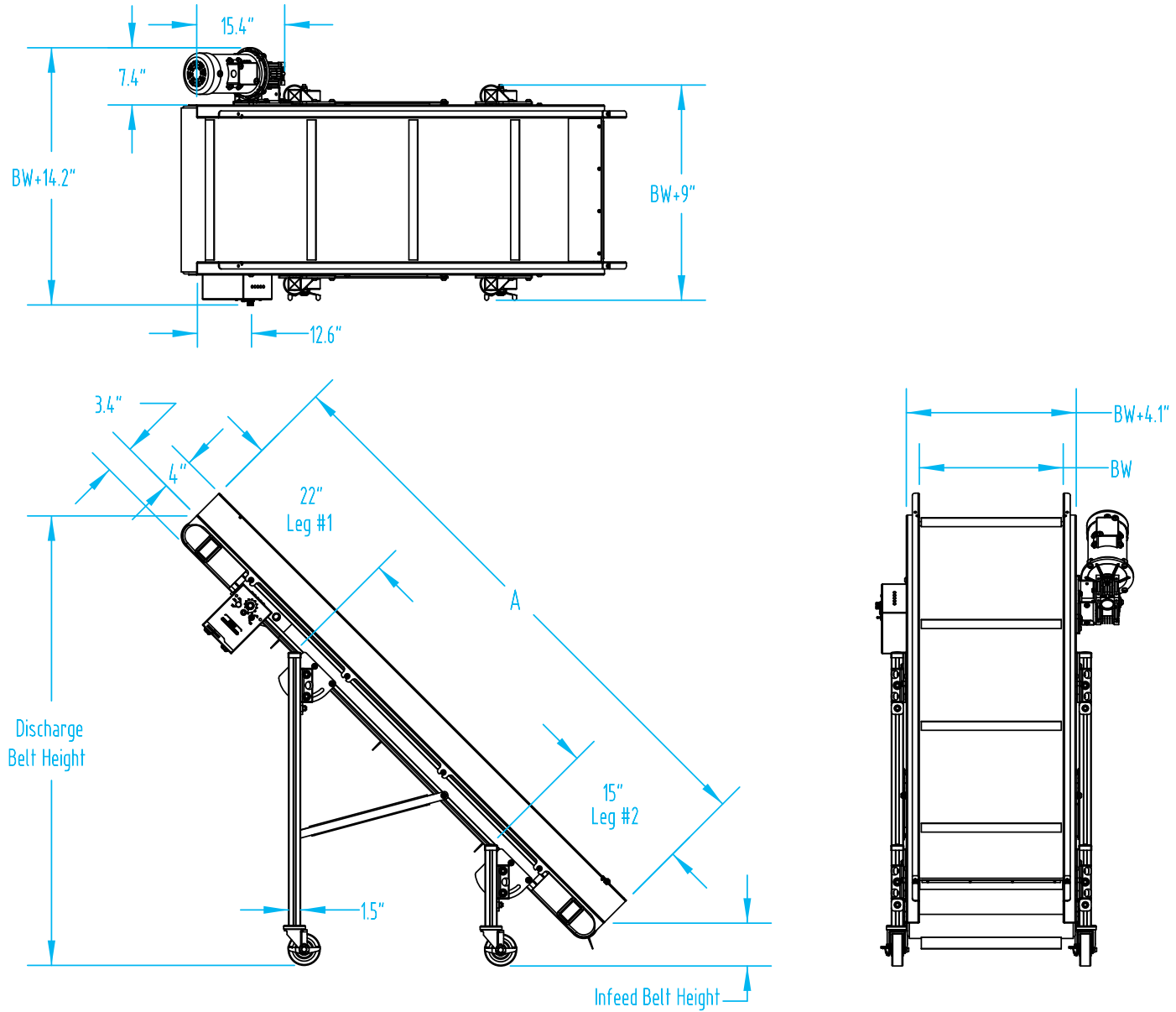


EAC Conveyor - Assembled View

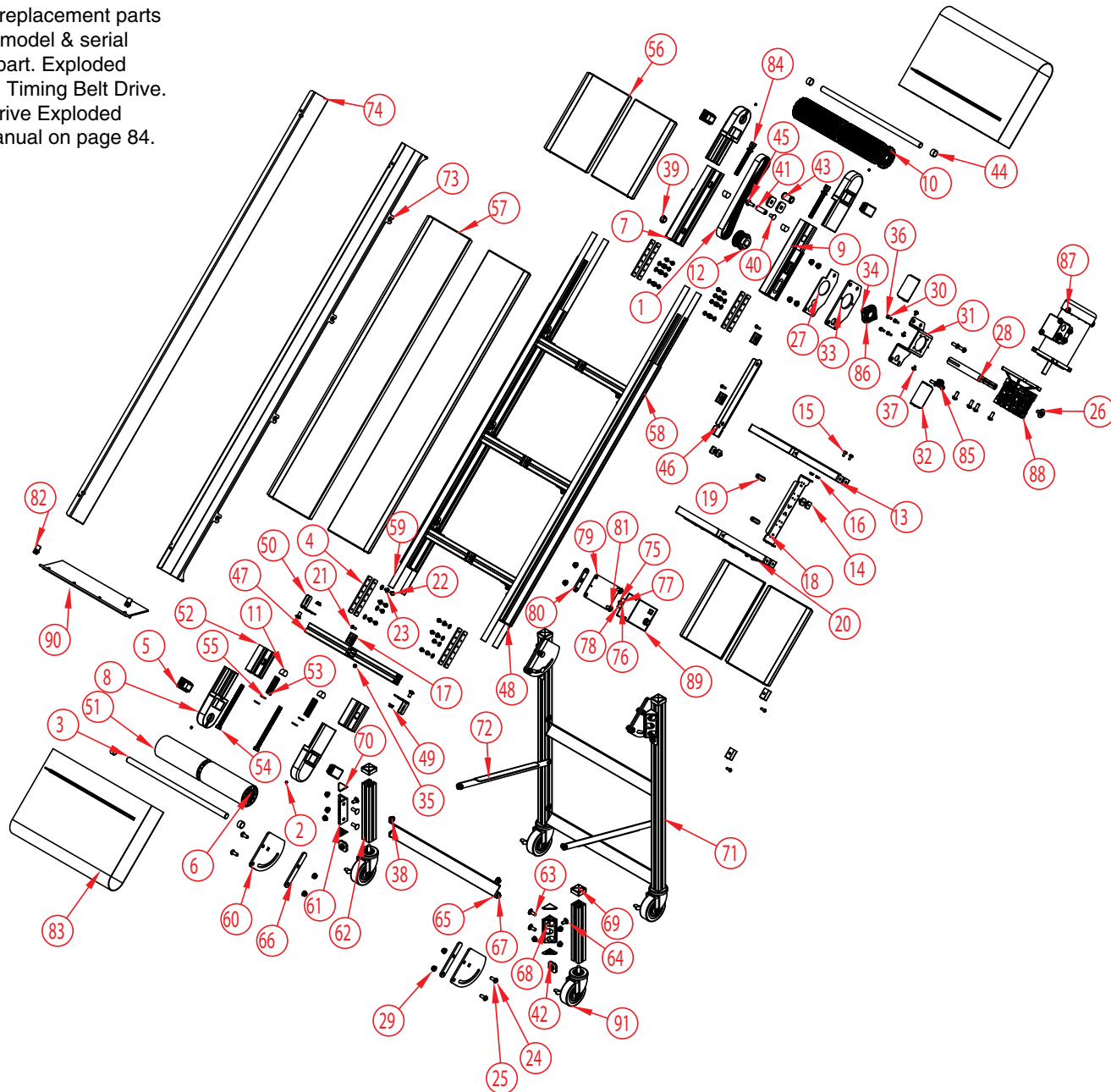
EAC Conveyor - Dimensional Drawing



Section VIII. Parts Lists and 3-D Drawings

EAC Conveyor - Exploded View

Part numbers listed in this document are for reference only. When buying replacement parts please provide your conveyor model & serial number to ensure the correct part. Exploded views are shown with External Timing Belt Drive. Find Chain Drive and Direct Drive Exploded Views online and in the EA Manual on page 84.



Section VIII. Parts Lists and 3-D Drawings

EAC Conveyor - Parts List

| | QTY. | PART NO. | DESCRIPTION | | QTY. | PART NO. | DESCRIPTION |
|----|------|----------------|-------------------------------------------------------|----|------|----------------|-------------------------------------------------------|
| 1 | 1 | CP-4511 | TIMING BELT 3/8" PITCH 1" WIDE 30" LONG | 25 | 15 | CP-3345 | LOCK WASHER .375 SPLIT RING |
| 2 | 4 | CP-350 | SOCKET HEAD SET SCREW .250-20 x .250 | 26 | 1 | CP-3393 | 3/8" FLAT WASHER |
| 3 | 2 | Contact EMI | TAIL SHAFT FOR EA CONVEYOR | 27 | 1 | 2X-14-2-1-3 | OUTSIDE MOTOR BRACKET SPACER |
| 4 | 8 | 2X-27-4 | FRAME CONNECTION PLATE | 28 | 1 | 2X-21-7 | SINGLE OUTPUT SHAFT FOR EA CONVEYOR |
| 5 | 4 | CP-3532 | PLASTIC CAP 1.500x2.500 RECTANGLE | 29 | 40 | CP-3299 | SERRATED FLANGE NUT 0.375-16 BLACK OXIDE |
| 6 | 4 | CP-4592 | 20MM BALL BEARING SELF ALIGNING | 30 | 4 | CP-7031 | WASHER, M6, EXTERNAL TOOTH LOCK WASHER |
| 7 | 1 | 2X-44-2-2 | FRAME SIDE FOR DRIVE HEAD | 31 | 1 | 2X-14-7-1 | MOUNTING BRACKET FOR 040 REDUCER |
| 8 | 4 | 2X-14-1-1 | TAKE-UP BRACKET FOR EA CONVEYOR | 32 | 2 | 2X-14-7-3 | COVER FOR MOUNTING BRACKET |
| 9 | 1 | 2X-44-2-1 | FRAME SIDE FOR DRIVE HEAD | 33 | 1 | 2X-14-7-2 | MOUNTING BRACKET FOR BEARING |
| 10 | 1 | Contact EMI | DRIVE PULLEY FOR EA CONVEYOR | 34 | 2 | CP-282 | SLOTTED FLAT HEAD SCREW .250-20 x .750 |
| 11 | 4 | 2X-55-1 | TAKE-UP NUT FOR EA CONVEYOR | 35 | 6 | CP-600 | 1/4-20 PLATED ELASTIC LOCK NUT |
| 12 | 1 | 2X-10-2 | 19 TOOTH L SERIES TIMING PULLEY | 36 | 4 | CP-7337 | HEX HEAD SCREW M6 x 16 |
| 13 | 2 | 2X-41-2-W (CF) | FRAME BRACE FOR DRIVE HEAD | 37 | 20 | CP-4536 | 1/4-20 X 1/2" BLACK OXIDE TORX BUTTON CAP SCREW |
| 14 | 4 | 2X-27-5-100 | INSIDE FRAME NUT | 38 | 20 | CP-3343 | LOCK WASHER .250 SPLIT RING |
| 15 | 4 | CP-3067 | HEX SERRATED FLANGE SCREW 0.250-20x0.500" ZINC PLATED | 39 | 1 | CP-1240 | 7/8" GROOVE DIAMETER RUBBER GROMMET |
| 16 | 4 | CP-3068 | HEX FLANGE NUT 0.25-20 | 40 | 15 | CP-457 | CARRIAGE BOLT .375-16 x .750 |
| 17 | 8 | 2X-19-1 | SLIDE BED RETAINER OR CLAMP | 41 | 1 | 4S-41-37-175 | 5/8" DIAMETER SST CROSS BRACE |
| 18 | 1 | 2X-29-1 | INSIDE CONTROL SUPPORT | 42 | 6 | 2X-14-6-3 | LEG MOUNTING BRACKET STOP |
| 19 | 2 | 2X-55-3 | SLIDE TRAY HOLD DOWN NUT | 43 | 1 | 2X-15-1 | DELTRIN IDLER ROLLER |
| 20 | 2 | CP-2376 | RUBBER GROMMET | 44 | 4 | CR-31-27-14 | 25mm O.D. DRIVE SHAFT SPACER |
| 21 | 8 | CP-259 | SLOTTED FLAT HEAD SCREW .250-20 x 1.000 | 45 | 1 | CP-2939 | HEX SERRATED FLANGE SCREW 0.375-16x1.000" ZINC PLATED |
| 22 | 34 | CP-4564 | HEX SERRATED FLANGE SCREW 0.250-20x0.375" ZINC PLATED | 46 | 1 | 2X-45-11 | SLIDE BED WATER GUARD |
| 23 | 30 | CP-654 | FLAT WASHER .250 SAE | 47 | 4 | 2X-41-1-W (CF) | FRAME RUNG FOR EA CONVEYOR |
| 24 | 17 | CP-4534 | 3/8-16 X 1" BLACK OXIDE TORX BUTTON CAP SCREW | | | | |

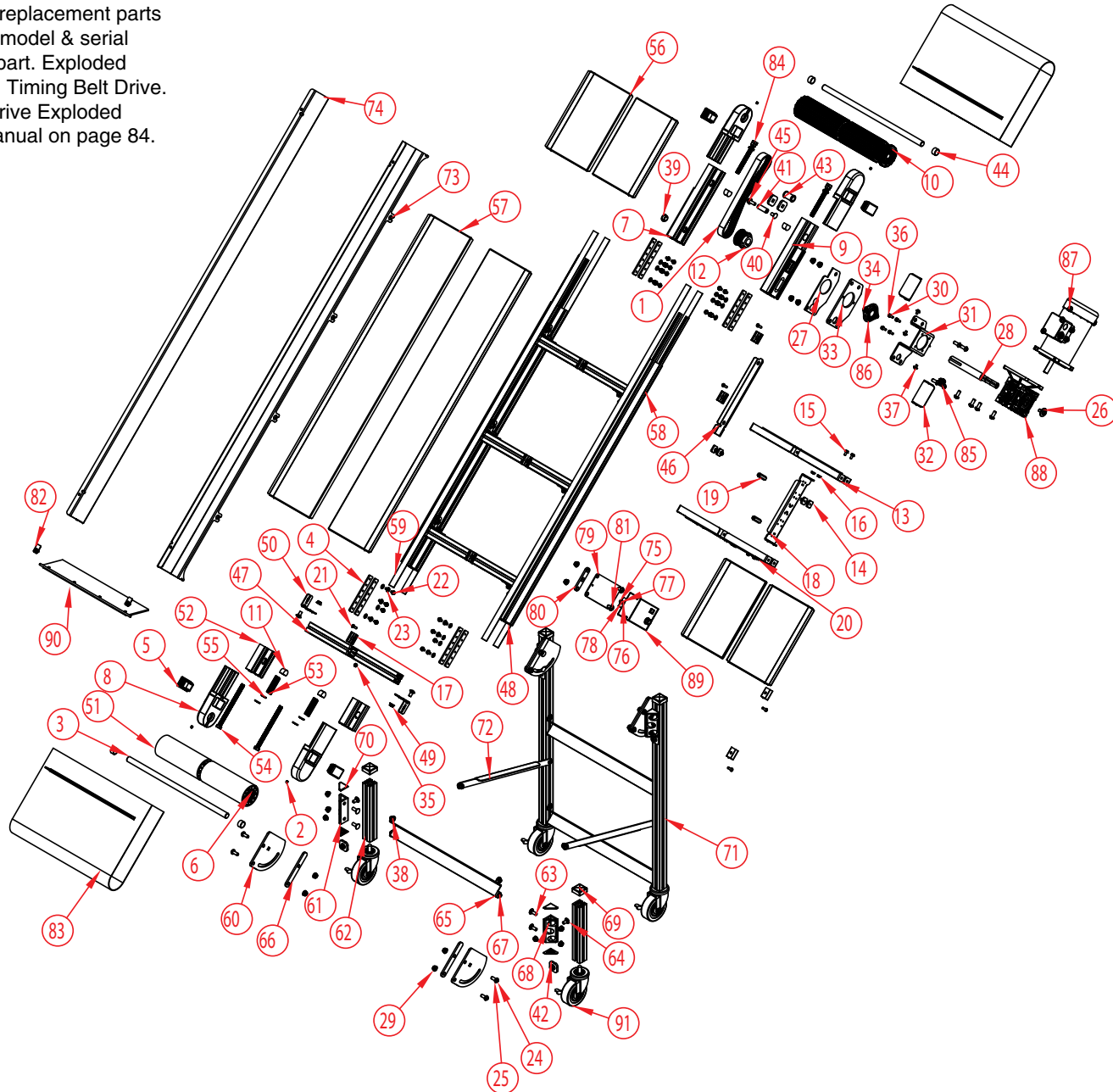
Part numbers listed in this document are for reference only. When buying replacement parts please provide your conveyor model & serial number to ensure the correct part.

Exploded views are shown with External Timing Belt Drive. Find Chain Drive and Direct Drive Exploded Views online and in the EA Manual on page 84.

Section VIII. Parts Lists and 3-D Drawings

EAC Conveyor - Exploded View - Continued

Part numbers listed in this document are for reference only. When buying replacement parts please provide your conveyor model & serial number to ensure the correct part. Exploded views are shown with External Timing Belt Drive. Find Chain Drive and Direct Drive Exploded Views online and in the EA Manual on page 84.



Section VIII. Parts Lists and 3-D Drawings

EAC Conveyor - Parts List - Continued

| | QTY. | PART NO. | DESCRIPTION | | QTY. | PART NO. | DESCRIPTION |
|----|------|---------------------|-------------------------------------------|----|------|------------------|-------------------------------------------------|
| 48 | 2 | 2X-44-1-L (CF) | FRAME SIDE FOR EA CONVEYOR | 70 | 8 | 2X-39-1 | CAP FOR 1.5" GUSSET PROFILE |
| 49 | 14 | CP-2869 | SERRATED FLANGE NUT 0.375-16 ZINC PLATED | 71 | 2 | 2X-36-1-L (CF) | LEG FOR EA CONVEYOR |
| 50 | 8 | 2X-09-1 | GUSSET FOR FRAME CROSS BRACE | 72 | 2 | 2X-41-4-L (CF) | KNEE BRACE FOR LEGS |
| 51 | 1 | 2X-24-1-W (CF) | TAIL PULLEY FOR EA CONVEYOR | 73 | 10 | CP-4533 | 3/8-16 X 3/4" BLACK OXIDE TORX BUTTON CAP SCREW |
| 52 | 2 | 2X-35-1-413 | TAKE-UP GUIDE FOR TAIL | 74 | 2 | 2X-33-1-1-L (CF) | 4"-90 DEGREE ALUMINUM RAIL FOR EA CONVEYOR |
| 53 | 2 | CP-7234 | SPRING, 3/4" O.D. X 6-7/8" LONG | 75 | 2 | CP-271 | SLOTTED ROUND HEAD SCREW #10-32 x .500 PAN |
| 54 | 2 | CP-4509 | 1/2-13 x 7" HX HD SCREW | 76 | 2 | CP-516 | HEX NYLON LOCKING NUT # 10-32 |
| 55 | 4 | 2X-42-1-S | TAKE-UP WASHER SST | 77 | 4 | CP-656 | FLAT WASHER .187 |
| 56 | 4 | 2X-45-1-W-1300 (CF) | SLIDE BED FOR STANDARD FRAME | 78 | 2 | CP-710 | #10 SPLIT LOCK WASHER |
| 57 | 2 | 2X-45-1-W-L (CF) | SLIDE BED FOR STANDARD FRAME | 79 | 1 | 2X-27-36-1 | SST MOUNTING PLATE |
| 58 | 4 | 2X-67-1-L (CF) | 10MM T-SLOT BLACK TRIM | 80 | 1 | 2X-27-36-2 | SST SPACER PLATE |
| 59 | 4 | 2X-67-2-L (CF) | UHMW WITH ADHESIVE BACK | 81 | 2 | CP-3293 | HEX SOCKET BUTTON HEAD SCREW .375-16 x .750 |
| 60 | 4 | 2X-14-6-1 | LEG MOUNTING BRACKET | 82 | 2 | 2E-01-10 | FLAPPER CLIP |
| 61 | 4 | 2X-14-5-3 | LEG MOUNTING BRACKET | 83 | 2 | CLEATED BELT | CLEATED BELT |
| 62 | 2 | 2X-36-1-L (CF) | LEG FOR EA CONVEYOR | 84 | 2 | 2X-232-1 | WELDMENT FOR TAKE-UP BOLT |
| 63 | 8 | CP-4532 | CARRIAGE BOLT .375-16 x 1.000 BLACK OXIDE | 85 | 1 | EL-7245 | CORD GRIP |
| 64 | 8 | CP-4540 | CARRIAGE BOLT .375-16 x 0.75 BLACK OXIDE | 86 | 1 | CP-674 | MANKO BEARING |
| 65 | 3 | 2X-41-3-W (CF) | ALUMINUM LEG CROSS BRACE | 87 | 1 | EL-128B | MOTOR |
| 66 | 4 | 2X-14-6-2 | LEG MOUNTING BRACKET SPACER | 88 | 1 | CP-7560 | MOTOVARIO GEARBOX NMRV-040-60-56C |
| 67 | 16 | CP-3297 | SERRATED FLANGE NUT 0.25-20 BLACK OXIDE | 89 | 1 | EL-2566 | KBWM 120 CONTROLLER |
| 68 | 6 | CP-3342 | FLAT WASHER .375 | 90 | 1 | 2S-249-7-W (CF) | 4" LEXAN FLAPPER |
| 69 | 4 | CP-4537 | 1.5" SQUARE DIP MOLDED END CAP BLACK | 91 | 4 | CP-1239 | SWIVEL CASTER, 4" 1 3/8" |

Part numbers listed in this document are for reference only. When buying replacement parts please provide your conveyor model & serial number to ensure the correct part.

Exploded views are shown with External Timing Belt Drive. Find Chain Drive and Direct Drive Exploded Views online and in the EA Manual on page 84.