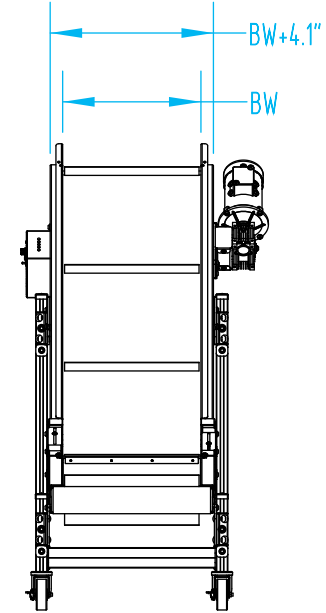
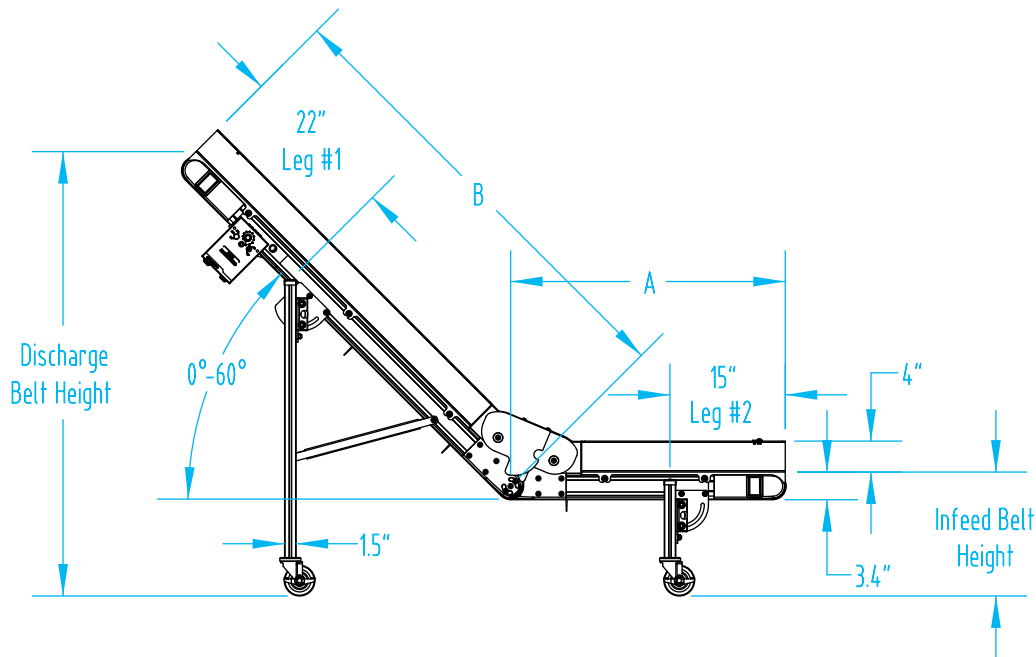
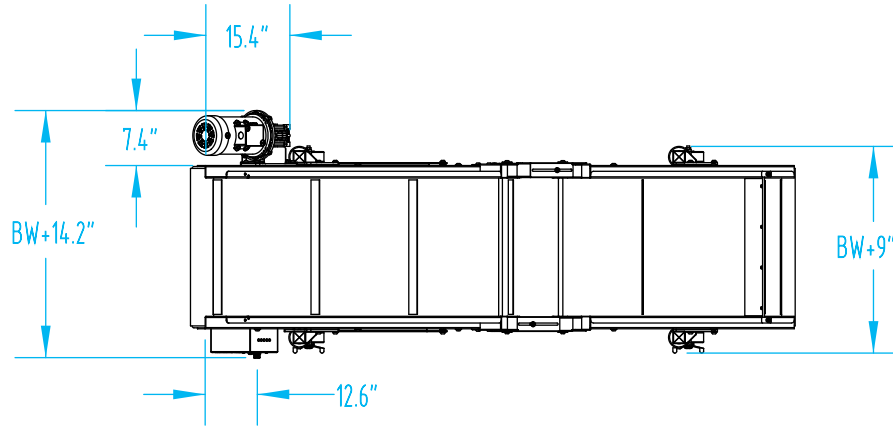


EAK Conveyor - Assembled View

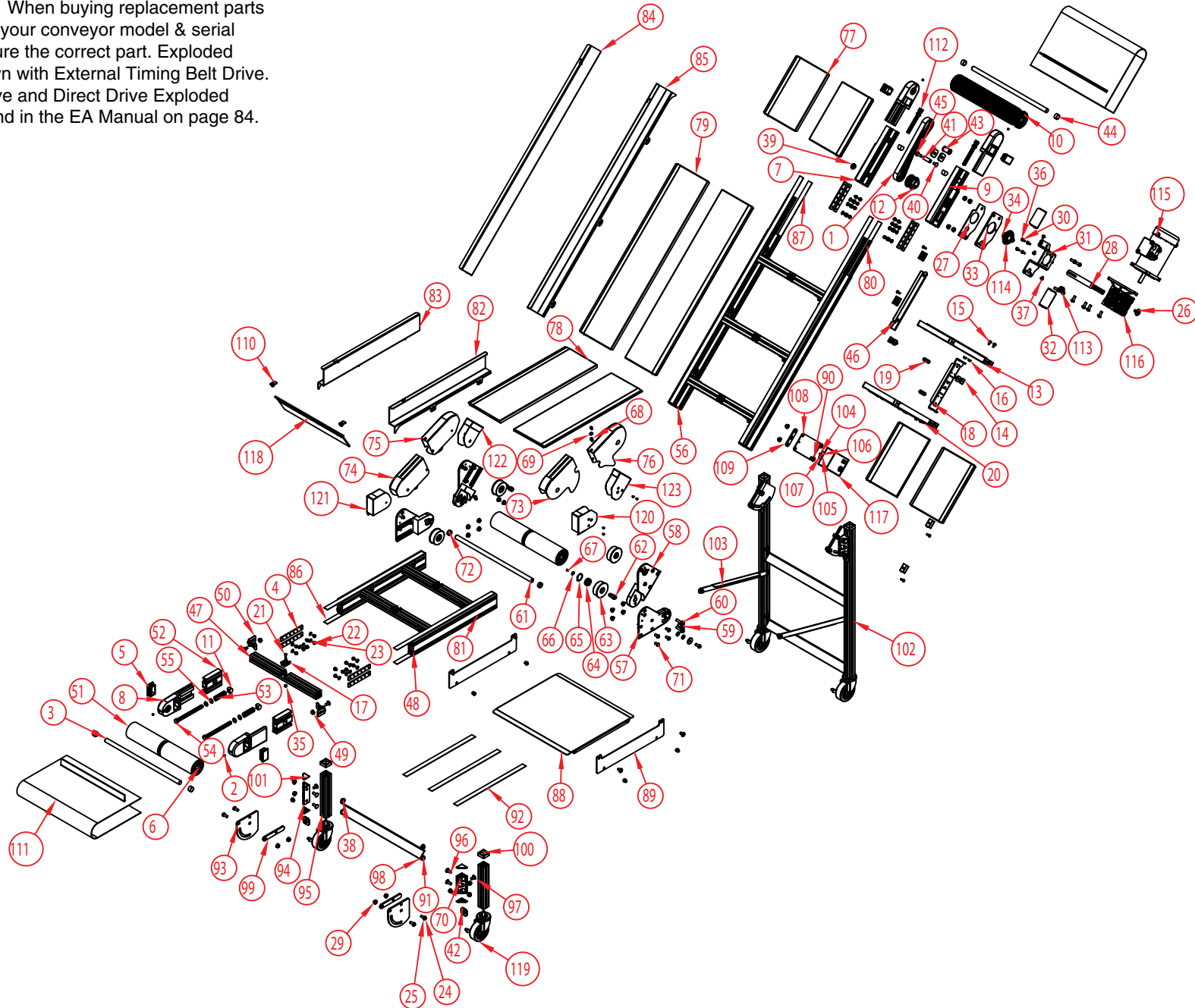
EAK Conveyor - Dimensional Drawing



Section VIII. Parts Lists and 3-D Drawings

EAK Conveyor - Exploded View

Part numbers listed in this document are for reference only. When buying replacement parts please provide your conveyor model & serial number to ensure the correct part. Exploded views are shown with External Timing Belt Drive. Find Chain Drive and Direct Drive Exploded Views online and in the EA Manual on page 84.



Section VIII. Parts Lists and 3-D Drawings

EAK Conveyor - Parts List

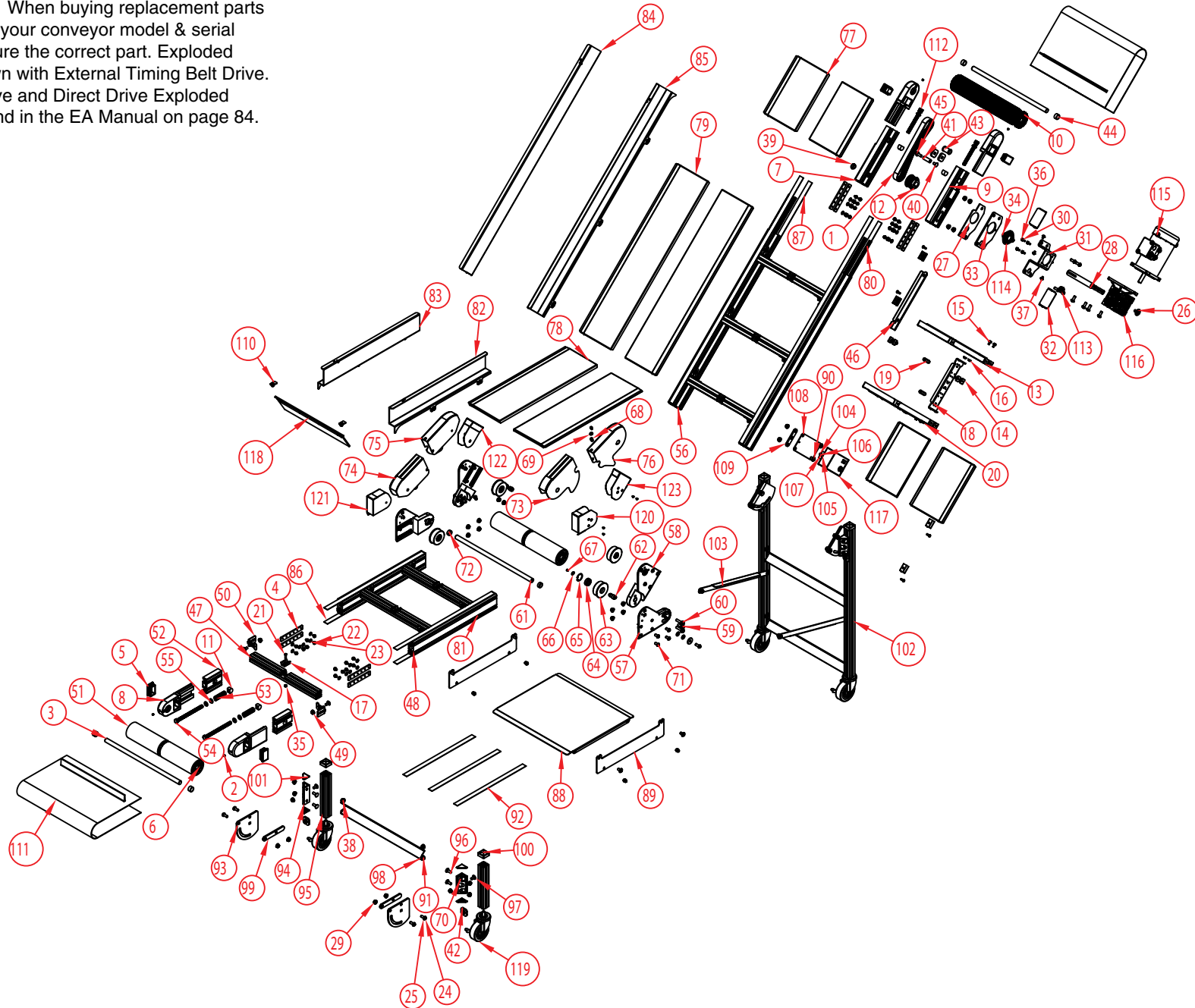
QTY.	PART NO.	DESCRIPTION	QTY.	PART NO.	DESCRIPTION		
1	1	CP-4511	32	2	2X-14-7-3	TIMING BELT 3/8" PITCH 1" WIDE 30" LONG	COVER FOR MOUNTING BRACKET
2	4	CP-350	33	1	2X-14-7-2	SOCKET HEAD SET SCREW .250-20 x .250	MOUNTING BRACKET FOR BEARING
3	2	Contact EMI	34	2	CP-282	TAIL SHAFT FOR EA CONVEYOR	SLOTTED FLAT HEAD SCREW .250-20 x .750
4	8	2X-27-4	35	8	CP-600	FRAME CONNECTION PLATE	1/4-20 PLATED ELASTIC LOCK NUT
5	4	CP-3532	36	4	CP-7337	PLASTIC CAP 1.500x2.500 RECTANGLE	HEX HEAD SCREW M6 x 16
6	6	CP-4592	37	26	CP-4536	20MM BALL BEARING SELF ALIGNING	1/4-20 X 1/2" BLACK OXIDE TORX BUTTON CAP SCREW
7	1	2X-44-2-2	38	24	CP-3343	FRAME SIDE FOR DRIVE HEAD	LOCK WASHER .250 SPLIT RING
8	4	2X-14-1-1	39	1	CP-1240	TAKE-UP BRACKET FOR EA CONVEYOR	7/8" GROOVE DIAMETER RUBBER GROMMET
9	1	2X-44-2-1	40	23	CP-457	FRAME SIDE FOR DRIVE HEAD	CARRIAGE BOLT .375-16 x .750
10	1	Contact EMI	41	1	4S-41-37-175	DRIVE PULLEY FOR EA CONVEYOR	5/8" DIAMETER SST CROSS BRACE
11	4	2X-55-1	42	6	2X-14-6-3	TAKE-UP NUT FOR EA CONVEYOR	LEG MOUNTING BRACKET STOP
12	1	2X-10-2	43	1	2X-15-1	19 TOOTH L SERIES TIMING PULLEY	DELRIN IDLER ROLLER
13	2	2X-41-2-W (CF)	44	4	CR-31-27-14	FRAME BRACE FOR DRIVE HEAD	25mm O.D. DRIVE SHAFT SPACER
14	4	2X-27-5-100	45	1	CP-2939	INSIDE FRAME NUT	HEX SERRATED FLANGE SCREW 0.375-16x1.000" ZINC PLATED
15	4	CP-3067	46	1	2X-45-11	HEX SERRATED FLANGE SCREW 0.250-20x0.5" ZINC PLATED	SLIDE BED WATER GUARD
16	4	CP-3068	47	6	2X-41-1-W (CF)	HEX FLANGE NUT 0.25-20	FRAME RUNG FOR EA CONVEYOR
17	10	2X-19-1	48	2	2X-44-1-L (CF)	SLIDE BED RETAINER OR CLAMP	INFEED FRAME SIDE FOR EA CONVEYOR
18	1	2X-29-1	49	22	CP-2869	INSIDE CONTROL SUPPORT	SERRATED FLANGE NUT 0.375-16 ZINC PLATED
19	2	2X-55-3	50	12	2X-09-1	SLIDE TRAY HOLD DOWN NUT	GUSSET FOR FRAME CROSS BASE
20	2	CP-2376	51	2	2X-24-1-W (CF)	RUBBER GROMMET	TAIL PULLEY FOR EA CONVEYOR
21	10	CP-259	52	2	2X-35-1-413	SLOTTED FLAT HEAD SCREW .250-20 x 1.000	TAKE-UP GUIDE FOR TAIL
22	34	CP-4564	53	2	CP-7234	HEX SERRATED FLANGE SCREW 0.250-20x0.375" ZINC PLATED	SPRING, 3/4" O.D. X 6-7/8" LONG
23	30	CP-654	54	2	CP-4509	FLAT WASHER .250 SAE	1/2-13 x 7" HX HD SCREW
24	21	CP-4534	55	4	2X-42-1-S	3/8-16 X 1" BLACK OXIDE TORX BUTTON CAP SCREW	TAKE-UP WASHER SST
25	15	CP-3345	56	2	2X-44-1-L (CF)	LOCK WASHER .375 SPLIT RING	DISCHARGE FRAME SIDE FOR EA CONVEYOR
26	5	CP-3393	57	2	2X-27-2	3/8" FLAT WASHER	ALUM OUTSIDE TRANSITION
27	1	2X-14-2-1-3	58	2	2X-27-1	OUTSIDE MOTOR BRACKET SPACER	ALUM INSIDE TRANSITION PLATE
28	1	2X-21-7	59	2	CP-4582	SINGLE OUTPUT SHAFT FOR EA CONVEYOR	HEX SERRATED FLANGE SCREW 0.375-16x1.000" BLACK ZINC PLATED
29	62	CP-3299	60	4	CP-4583	SERRATED FLANGE NUT 0.375-16 BLACK OXIDE	HEX SERRATED FLANGE SCREW 0.375-16x1.500" BLACK ZINC PLATED
30	4	CP-7031	61	1	2X-21-2-W (CF)	WASHER, M6, EXTERNAL TOOTH LOCK WASHER	TRANSITION SHAFT FOR ALUM
31	1	2X-14-7-1	62	4	2X-21-4	MOUNTING BRACKET FOR 040 REDUCER	SHAFT FOR TRANSITION ROLLER

Part numbers listed in this document are for reference only. When buying replacement parts please provide your conveyor model & serial number to ensure the correct part.

Exploded views are shown with External Timing Belt Drive. Find Chain Drive and Direct Drive Exploded Views online and in the EA Manual on page 84.

EAK Conveyor - Exploded View - Continued

Part numbers listed in this document are for reference only. When buying replacement parts please provide your conveyor model & serial number to ensure the correct part. Exploded views are shown with External Timing Belt Drive. Find Chain Drive and Direct Drive Exploded Views online and in the EA Manual on page 84.



Section VIII. Parts Lists and 3-D Drawings

EAK Conveyor - Parts List - Continued

	QTY.	PART NO.	DESCRIPTION		QTY.	PART NO.	DESCRIPTION
63	4	2X-15-3-294	ROLLER WHEEL				
64	4	CP-7037	LSE-11 ROLLER BEARING	94	4	2X-14-5-3	LEG MOUNTING BRACKET
65	4	CP-7310	SNAP RING 35MM DIAMETER (SEEGER) ATS-25	95	2	2X-36-1-L (CF)	INFEED LEG FOR EA CONVEYOR
66	4	CP-7035	SNAP RING, 15mm EXTERNAL RING	96	8	CP-4532	CARRIAGE BOLT .375-16 x 1.000 BLACK OXIDE
67	12	CP-4607	SLOTTED FLAT HEAD SCREW #8-32 x .3125	97	8	CP-4540	CARRIAGE BOLT .375-16 x 0.75 BLACK OXIDE
68	2	CP-2132	1/4 - 20 AVIBANK NUTSERT	98	3	2X-41-3-W (CF)	ALUMINUM LEG CROSS BRACE
69	2	CP-3340	FLAT WASHER .250	99	4	2X-14-6-2	LEG MOUNTING BRACKET SPACER
70	28	CP-3342	FLAT WASHER .375	100	4	CP-4537	1.5" SQUARE DIP MOLDED END CAP BLACK
71	28	CP-4533	3/8-16 X 3/4" BLACK OXIDE TORX BUTTON CAP SCREW	101	8	2X-39-1	CAP FOR 1.5" GUSSET PROFILE
72	2	CR-31-27-10	TRANSITION 25mm O.D. DRIVE SHAFT SPACER	102	2	2X-36-1-L (CF)	DISCHARGE LEG FOR EA CONVEYOR
73	1	2X-08-1-5-1-L	TRANSITION GUARD PANEL	103	2	2X-41-4-L (CF)	KNEE BRACE FOR LEGS
74	1	2X-08-1-5-1-R	TRANSITION GUARD PANEL	104	2	CP-271	SLOTTED ROUND HEAD SCREW #10-32 x .500 PAN
75	1	2X-08-1-5-2-L	TRANSITION GUARD PANEL	105	2	CP-516	HEX NYLON LOCKING NUT # 10-32
76	1	2X-08-1-5-2-R	TRANSITION GUARD PANEL	106	4	CP-656	FLAT WASHER .187
77	4	2X-45-1-W-1300 (CF)	DRIVE HEAD SLIDE BED FOR STANDARD FRAME	107	2	CP-710	#10 SPLIT LOCK WASHER
78	2	2X-45-1-W-L (CF)	INFEED SLIDE BED FOR STANDARD FRAME	108	1	2X-27-36-1	SST MOUNTING PLATE
79	2	2X-45-1-W-L (CF)	DISCHARGE SLIDE BED FOR STANDARD FRAME	109	1	2X-27-36-2	SST SPACER PLATE
80	4	2X-67-1-L (CF)	DISCHARGE 10MM T-SLOT BLACK TRIM	110	2	2E-01-10	FLAPPER CLIP
81	4	2X-67-1-L (CF)	INFEED 10MM T-SLOT BLACK TRIM	111	1	CLEATED BELT	CLEATED BELT
82	1	2X-33-2-L-L (CF)	INFEED 4"-90 DEGREE ALUMINUM RAIL FOR EAK	112	2	2X-232-1	WELDMENT FOR TAKE-UP BOLT
83	1	2X-33-2-L-R (CF)	INFEED 4"-90 DEGREE ALUMINUM RAIL FOR EAK	113	1	EL-7245	CORD GRIP
84	1	2X-33-2-L-L (CF)	DISCHARGE 4"-90 DEGREE ALUMINUM RAIL FOR EAK	114	1	CP-674	MANKO BEARING
85	1	2X-33-2-L-R (CF)	DISCHARGE 4"-90 DEGREE ALUMINUM RAIL FOR EAK	115	1	EL-128B	MOTOR
86	4	2X-67-2-L (CF)	INFEED UHMW WITH ADHESIVE BACK	116	1	CP-7560	MOTOVARIO GEARBOX NMRV-040-60-56C
87	4	2X-67-2-L (CF)	DISCHARGE UHMW WITH ADHESIVE BACK	117	1	EL-2566	KBWM 120 CONTROLLER
88	1	2X-45-4-W-L (CF)	BOTTOM BELT GUARD TRAY	118	1	2S-249-7-W (CF)	4" LEXAN FLAPPER
89	2	2X-44-4-L (CF)	ALUMINUM 2" DROP BOTTOM SLIDE	119	4	CP-1239	SWIVEL CASTER, 4" 1 3/8"
90	6	CP-3293	HEX SOCKET BUTTON HEAD SCREW .375-16 x .750	120	1	2X-208-1-1-L	TRANSITION GUARD PANEL
91	20	CP-3297	SERRATED FLANGE NUT 0.25-20 BLACK OXIDE	121	1	2X-208-1-1-R	TRANSITION GUARD PANEL
92	3	2X-67-2-L (CF)	UHMW WITH ADHESIVE BACK FOR BOTTOM TRAY	122	1	2X-208-1-4-L	TRANSITION GUARD PANEL
93	4	2X-14-6-1	LEG MOUNTING BRACKET	123	1	2X-208-1-4-R	TRANSITION GUARD PANEL

Part numbers listed in this document are for reference only. When buying replacement parts please provide your conveyor model & serial number to ensure the correct part.

Exploded views are shown with External Timing Belt Drive. Find Chain Drive and Direct Drive Exploded Views online and in the EA Manual on page 84.