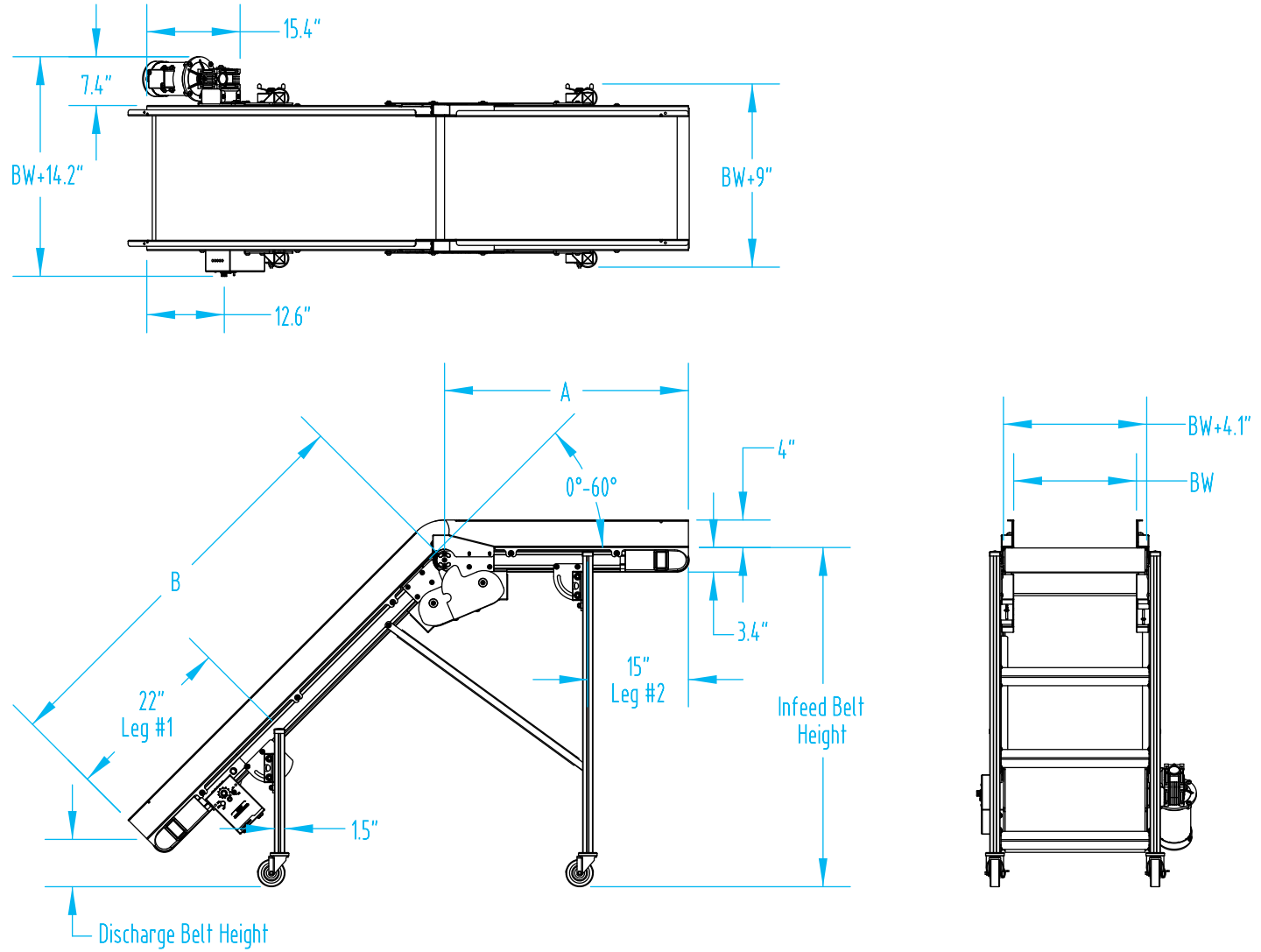


**EAR Conveyor - Assembled View**

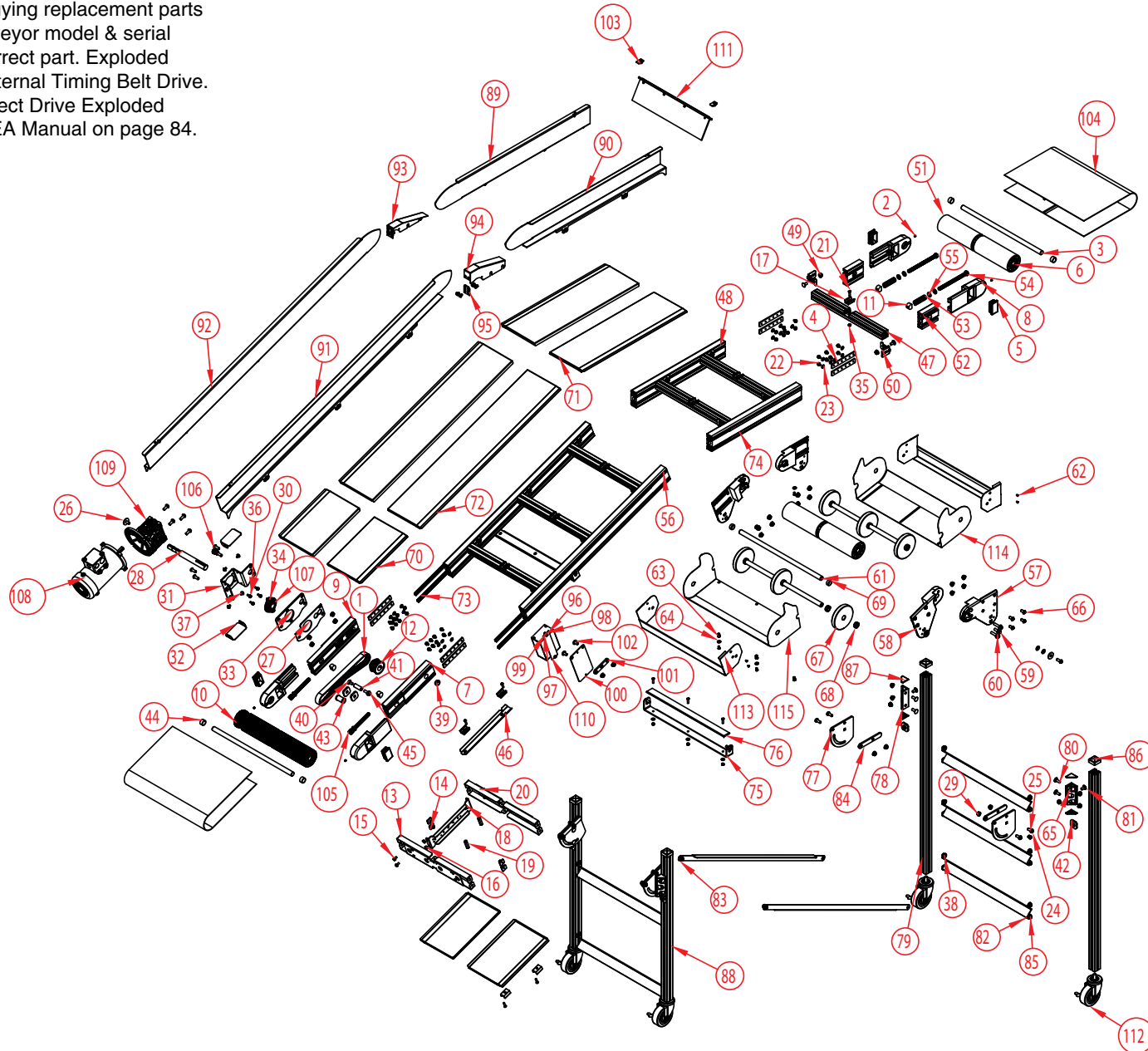
### EAR Conveyor - Dimensional Drawing



## Section VIII. Parts Lists and 3-D Drawings

## EAR Conveyor - Exploded View

Part numbers listed in this document are for reference only. When buying replacement parts please provide your conveyor model & serial number to ensure the correct part. Exploded views are shown with External Timing Belt Drive. Find Chain Drive and Direct Drive Exploded Views online and in the EA Manual on page 84.



Section VIII. Parts Lists and 3-D Drawings

## EAR Conveyor - Parts List

QTY.	PART NO.	DESCRIPTION	QTY.	PART NO.	DESCRIPTION		
1	1	CP-4511	30	4	CP-7031	TIMING BELT 3/8" PITCH 1" WIDE 30" LONG	WASHER, M6, EXTERNAL TOOTH LOCK WASHER
2	4	CP-350	31	1	2X-14-7-1	SOCKET HEAD SET SCREW .250-20 x .250	MOUNTING BRACKET FOR 040 REDUCER
3	2	Contact EMI	32	2	2X-14-7-3	TAIL SHAFT FOR EA CONVEYOR	COVER FOR MOUNTING BRACKET
4	8	2X-27-4	33	1	2X-14-7-2	FRAME CONNECTION PLATE	MOUNTING BRACKET FOR BEARING
5	4	CP-3532	34	2	CP-282	PLASTIC CAP 1.500x2.500 RECTANGLE	SLOTTED FLAT HEAD SCREW .250-20 x .750
6	6	CP-4592	35	14	CP-600	20MM BALL BEARING SELF ALIGNING	1/4-20 PLATED ELASTIC LOCK NUT
7	1	2X-44-2-2	36	4	CP-7337	FRAME SIDE FOR DRIVE HEAD	HEX HEAD SCREW M6 x 16
8	4	2X-14-1-1	37	35	CP-4536	TAKE-UP BRACKET FOR EA CONVEYOR	1/4-20 X 1/2" BLACK OXIDE TORX BUTTON CAP SCREW
9	1	2X-44-2-1	38	28	CP-3343	FRAME SIDE FOR DRIVE HEAD	LOCK WASHER .250 SPLIT RING
10	1	Contact EMI	39	1	CP-1240	DRIVE PULLEY FOR EA CONVEYOR	7/8" GROOVE DIAMETER RUBBER GROMMET
11	4	2X-55-1	40	23	CP-457	TAKE-UP NUT FOR EA CONVEYOR	CARRIAGE BOLT .375-16 x .750
12	1	2X-10-2	41	1	4S-41-37-175	19 TOOTH L SERIES TIMING PULLEY	5/8" DIAMETER SST CROSS BRACE
13	2	2X-41-2-W (CF)	42	6	2X-14-6-3	FRAME BRACE FOR DRIVE HEAD	LEG MOUNTING BRACKET STOP
14	4	2X-27-5-100	43	1	2X-15-1	INSIDE FRAME NUT	DELTRIN IDLER ROLLER
15	4	CP-3067	44	4	CR-31-27-14	HEX SERRATED FLANGE SCREW 0.250-20x0.500" ZINC PLATED	25mm O.D. DRIVE SHAFT SPACER
16	4	CP-3068	45	1	CP-2939	HEX FLANGE NUT 0.25-20	HEX SERRATED FLANGE SCREW 0.375-16x1" ZINC PLATED
17	10	2X-19-1	46	1	2X-45-11	SLIDE BED RETAINER OR CLAMP	SLIDE BED WATER GUARD
18	1	2X-29-1	47	6	2X-41-1-W (CF)	INSIDE CONTROL SUPPORT	FRAME RUNG FOR EA CONVEYOR
19	2	2X-55-3	48	2	2X-44-1-L (CF)	SLIDE TRAY HOLD DOWN NUT	INFEED FRAME SIDE FOR EA CONVEYOR
20	2	CP-2376	49	22	CP-2869	RUBBER GROMMET	SERRATED FLANGE NUT 0.375-16 ZINC PLATED
21	16	CP-259	50	12	2X-09-1	SLOTTED FLAT HEAD SCREW .250-20 x 1.000	GUSSET FOR FRAME CROSS BRACE
22	34	CP-4564	51	2	2X-24-1-W (CF)	HEX SERRATED FLANGE SCREW 0.250-20x0.375" ZINC PLATED	TAIL PULLEY FOR EA CONVEYOR
23	30	CP-654	52	2	2X-35-1-413	FLAT WASHER .250 SAE	TAKE-UP GUIDE FOR TAIL
24	25	CP-4534	53	2	CP-7234	3/8-16 X 1" BLACK OXIDE TORX BUTTON CAP SCREW	SPRING, 3/4" O.D. X 6-7/8" LONG
25	19	CP-3345	54	2	CP-4509	LOCK WASHER .375 SPLIT RING	1/2-13 x 7" HX HD SCREW
26	5	CP-3393	55	4	2X-42-1-S	3/8" FLAT WASHER,	TAKE-UP WASHER SST
27	1	2X-14-2-1-3	56	2	2X-44-1-L (CF)	OUTSIDE MOTOR BRACKET SPACER	DISCHARGE FRAME SIDE FOR EA CONVEYOR
28	1	2X-21-7	57	2	2X-27-2	SINGLE OUTPUT SHAFT FOR	ALUMINUM OUTSIDE TRANSITION
29	62	CP-3299	58	2	2X-27-1	SERRATED FLANGE NUT 0.375-16 BLACK OXIDE	ALUMINUM INSIDE TRANSITION PLATE

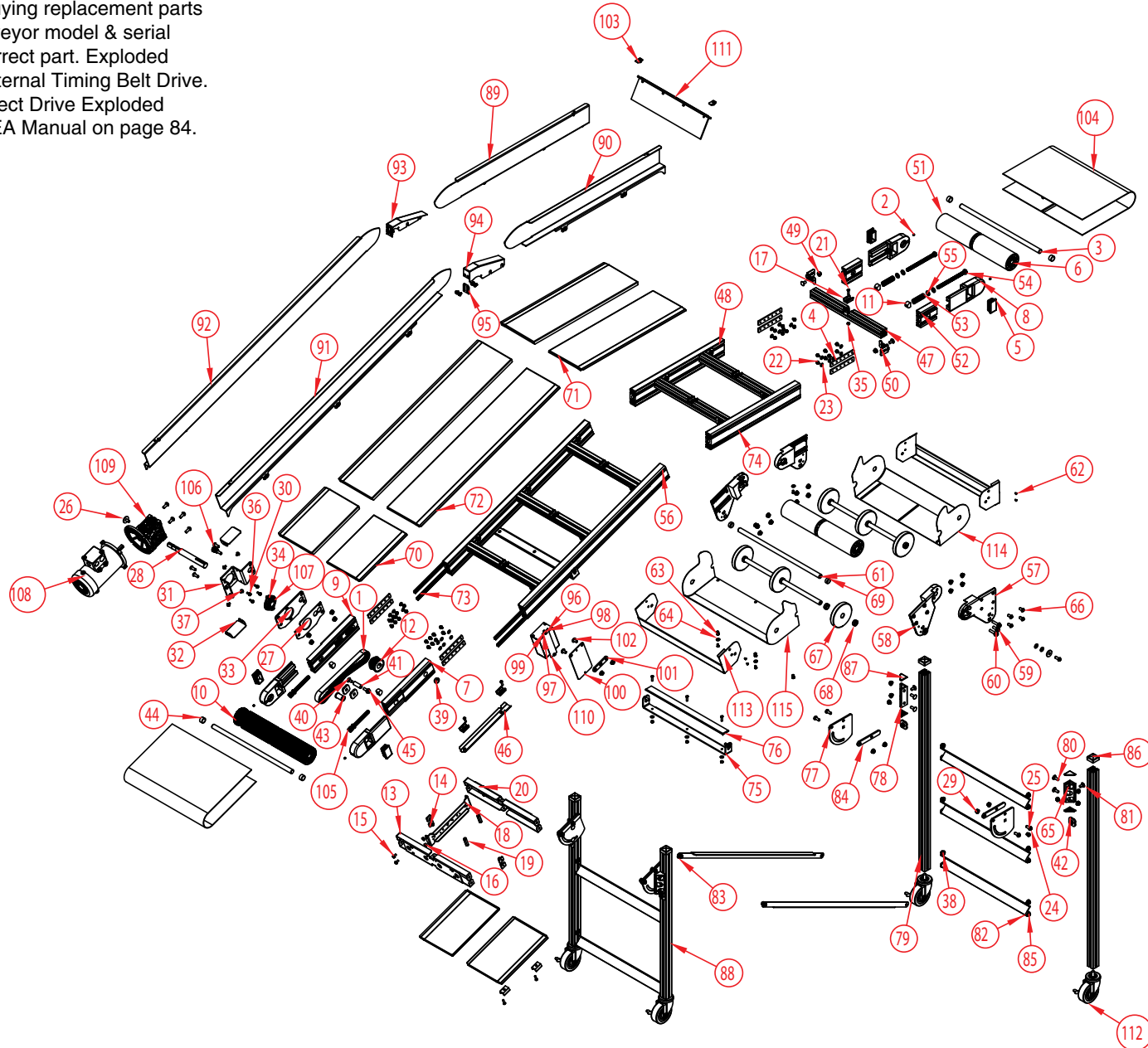
Part numbers listed in this document are for reference only. When buying replacement parts please provide your conveyor model & serial number to ensure the correct part.

Exploded views are shown with External Timing Belt Drive. Find Chain Drive and Direct Drive Exploded Views online and in the EA Manual on page 84.

## Section VIII. Parts Lists and 3-D Drawings

**EAR Conveyor - Exploded View - Continued**

Part numbers listed in this document are for reference only. When buying replacement parts please provide your conveyor model & serial number to ensure the correct part. Exploded views are shown with External Timing Belt Drive. Find Chain Drive and Direct Drive Exploded Views online and in the EA Manual on page 84.



Section VIII. Parts Lists and 3-D Drawings

**EAR Conveyor - Parts List - Continued**

	QTY.	PART NO.	DESCRIPTION		QTY.	PART NO.	DESCRIPTION
59	2	CP-4582	HEX SERRATED FLANGE SCREW 0.375-16x1" BLACK ZINC PLATED	88	2	2X-36-1-L (CF)	DISCHARGE LEG FOR EA CONVEYOR
60	4	CP-4583	HEX SERRATED FLANGE SCREW 0.375-16x1.5" BLACK ZINC PLATED	89	1	2X-33-5-L-L (CF)	4"-90 DEGREE ALUMINUM RAIL FOR INFEED
61	3	2X-21-2-W (CF)	TRANSITION SHAFT FOR EA CONVEYOR	90	1	2X-33-5-L-R (CF)	4"-90 DEGREE ALUMINUM RAIL FOR INFEED
62	8	CP-4607	SLOTTED FLAT HEAD SCREW #8-32 x .3125	91	1	2X-33-4-L-R (CF)	4"-90 DEGREE ALUM RAIL FOR DISCHARGE
63	7	CP-2132	1/4 - 20 AVIBANK NUTSERT	92	1	2X-33-4-L-L (CF)	4"-90 DEGREE ALUM RAIL FOR DISCHARGE
64	13	CP-3340	FLAT WASHER .250	93	1	2X-08-2-4-1-R	WELD NOSE-OVER GUARD TOP COVER
65	24	CP-3342	FLAT WASHER .375	94	1	2X-08-2-4-1-L	WELD NOSE-OVER GUARD TOP COVER
66	28	CP-4533	3/8-16 X 3/4" BLACK OXIDE TORX BUTTON CAP SCREW	95	2	2X-08-2-4-2	NOSE-OVER GUARD COVER
67	6	2X-15-2-482	IDLER WHEEL	96	2	CP-271	SLOTTED ROUND HEAD SCREW #10-32 x .500 PAN
68	12	CP-7072	20mm LOCKING COLLAR	97	2	CP-516	HEX NYLON LOCKING NUT # 10-32
69	2	CR-31-27-10	25mm O.D. DRIVE SHAFT SPACER	98	4	CP-656	FLAT WASHER .187
70	4	2X-45-1-W-1300 (CF)	DRIVE HEAD SLIDE BED FOR STANDARD FRAME	99	2	CP-710	#10 SPLIT LOCK WASHER
71	2	2X-45-1-W-L (CF)	INFEED SLIDE BED FOR STANDARD FRAME	100	1	2X-27-36-1	SST MOUNTING PLATE
72	2	2X-45-1-W-L (CF)	DISCHARGE SLIDE BED FOR STANDARD FRAME	101	1	2X-27-36-2	SST SPACER PLATE
73	4	2X-67-1-L (CF)	DISCHARGE 10MM T-SLOT BLACK TRIM	102	2	CP-3293	HEX SOCKET BUTTON HEAD SCREW .375-16 x .750
74	4	2X-67-1-L (CF)	INFEED 10MM T-SLOT BLACK TRIM	103	2	2E-01-10	FLAPPER CLIP
75	2	2X-29-11-W (CF)	BELT SUPPORT	104	1	BELT	BELT
76	2	3E-31-398-W (CF)	1/4" THICK UHMW SPACER	105	2	2X-232-1	WELDMENT FOR TAKE-UP BOLT
77	4	2X-14-6-1	LEG MOUNTING BRACKET	106	1	EL-7245	CORD GRIP
78	4	2X-14-5-3	LEG MOUNTING BRACKET	107	1	CP-674	MANKO BEARING
79	2	2X-36-1-4400	LEG FOR EXTRUDED ALUM CONVEYOR	108	1	EL-128B	MOTOR
80	8	CP-4532	CARRIAGE BOLT .375-16 x 1.000 BLACK OXIDE	109	1	CP-7560	MOTOVARIO GEARBOX NMRV-040-60-56C
81	8	CP-4540	CARRIAGE BOLT .375-16 x 0.75 BLACK OXIDE	110	1	EL-2566	KBWM 120 CONTROLLER
82	5	2X-41-3-W (CF)	ALUMINUM LEG CROSS BRACE	111	1	2S-249-7-W (CF)	4" LEXAN FLAPPER
83	2	2X-41-4-L (CF)	KNEE BRACE FOR LEGS	112	4	CP-1239	SWIVEL CASTER, 4" 1 3/8"
84	4	2X-14-6-2	LEG MOUNTING BRACKET SPACER	113	2	2X-208-3-1-W (CF)	TRANSITION GUARD PANEL
85	24	CP-3297	SERRATED FLANGE NUT 0.25-20 BLACK OXIDE	114	1	2X-208-3-2-W (CF)	TRANSITION GUARD PANEL
86	4	CP-4537	1.5" SQUARE DIP MOLDED END CAP BLACK	115	1	2X-208-3-3-W (CF)	TRANSITION GUARD PANEL
87	8	2X-39-1	CAP FOR 1.5" GUSSET PROFILE				

Part numbers listed in this document are for reference only. When buying replacement parts please provide your conveyor model & serial number to ensure the correct part.

Exploded views are shown with External Timing Belt Drive. Find Chain Drive and Direct Drive Exploded Views online and in the EA Manual on page 84.