

Configurable Manifold Series

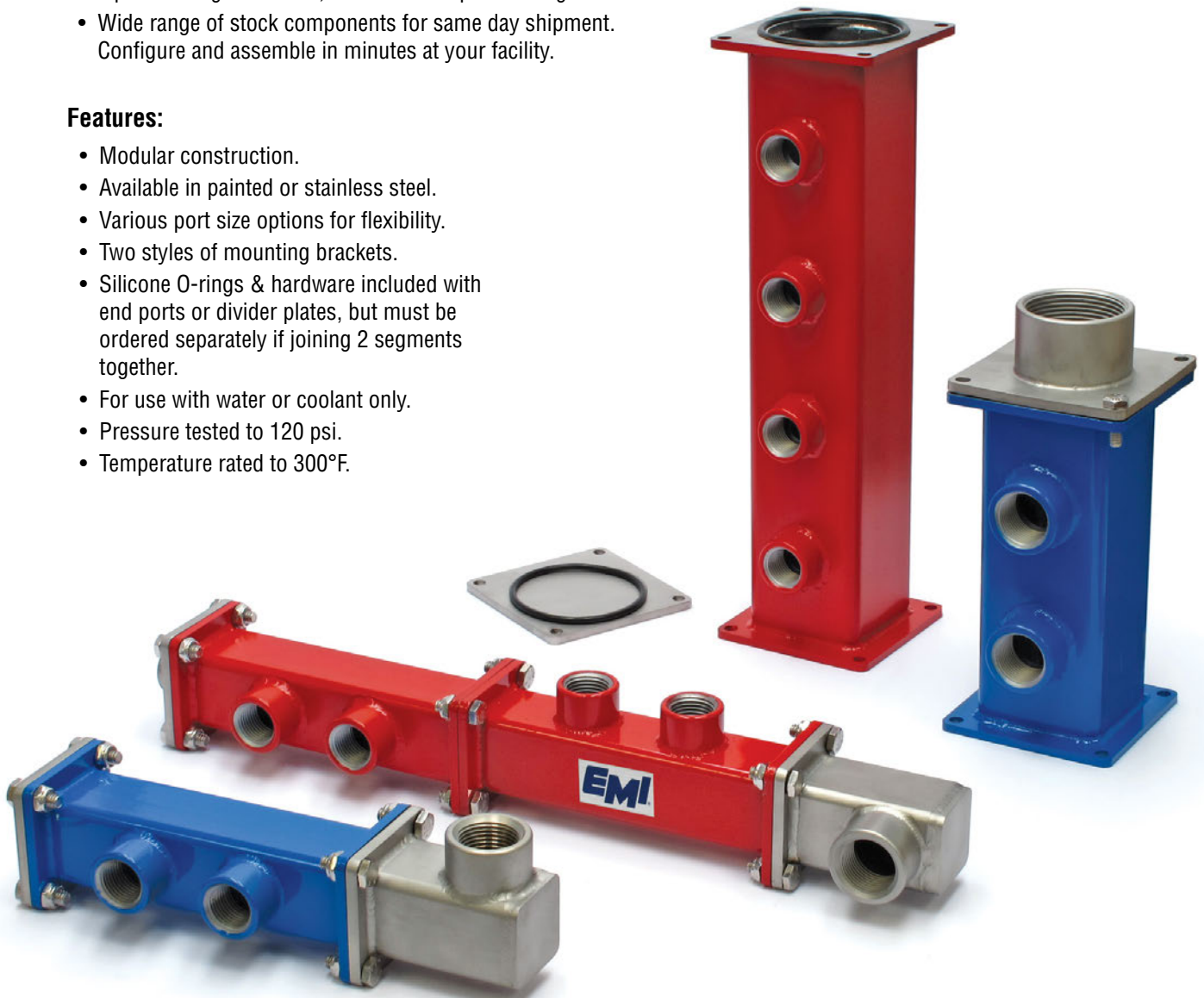
EMI's most versatile manifold design, the Configurable Manifold System!

- Change Inlet / Outlet size on End Port Segments or Inlet / Outlet size on Body Segments.
- Increase or decrease total number of outlet ports should your application change.
- Configure and reconfigure orientation of outlet ports.
- Reposition in 90° increments to suit application, then easily return to original configuration whenever necessary.
- Mix and match different sizes of outlet ports, customizing to your application instead of using reducer bushings or other methods.
- Two stock tubing sizes to serve you better. Our standard 2½" square tubing and a new, smaller 1½" square tubing size.
- Wide range of stock components for same day shipment. Configure and assemble in minutes at your facility.

Need something custom?
Download Order Form here.

Features:

- Modular construction.
- Available in painted or stainless steel.
- Various port size options for flexibility.
- Two styles of mounting brackets.
- Silicone O-rings & hardware included with end ports or divider plates, but must be ordered separately if joining 2 segments together.
- For use with water or coolant only.
- Pressure tested to 120 psi.
- Temperature rated to 300°F.



Configurable Manifold Series

Configure yours in 4 easy steps:

Step 1:

- Determine the style that best suits your needs: Red or Blue Powder Coated or Stainless Steel.

Step 2:

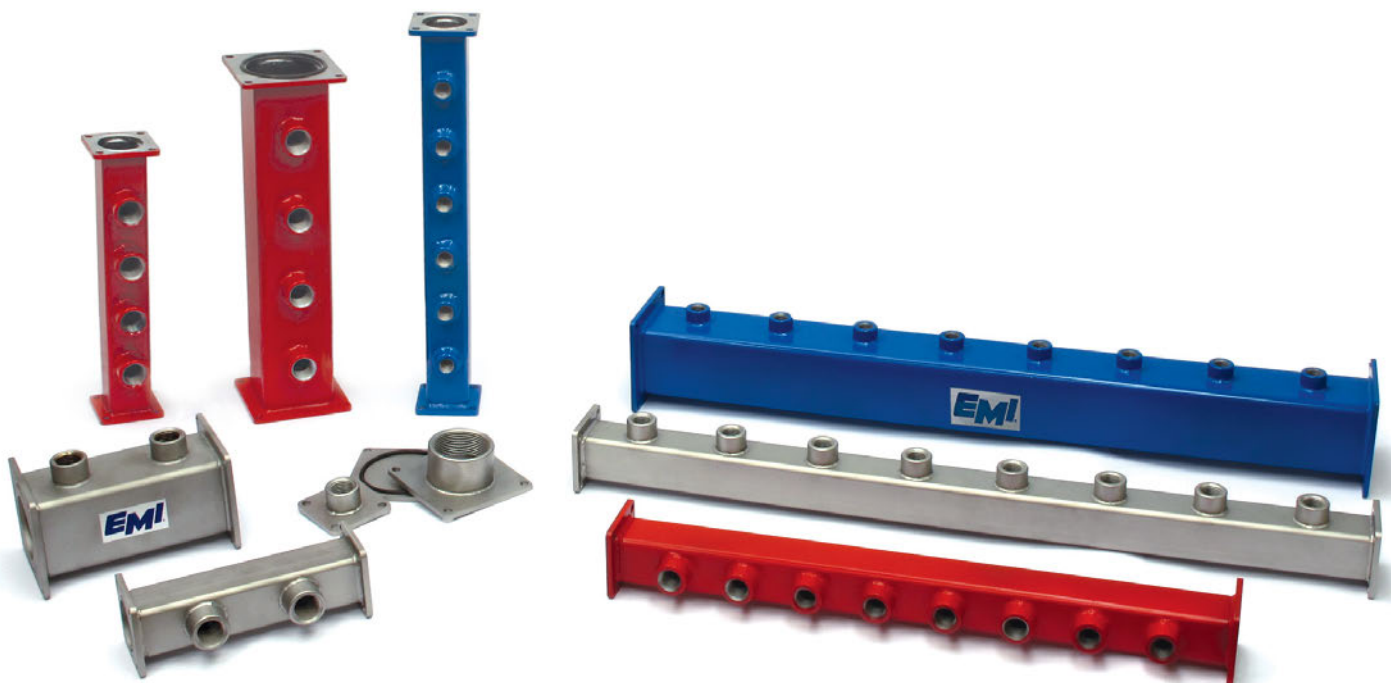
- Determine how many total outlets and what size are required from the manifolds on pages 106–113.

Step 3:

- Choose the correct End Port, End Plate, or Middle Divider (if you are combining two manifolds) from pages 114–115.

Step 4:

- Choose from two mounting bracket styles on page 115.

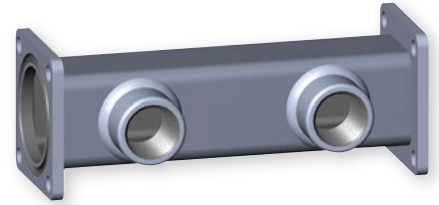


Configurable Manifold Series

1½" Manifold Available in Powder Coated or Stainless Steel

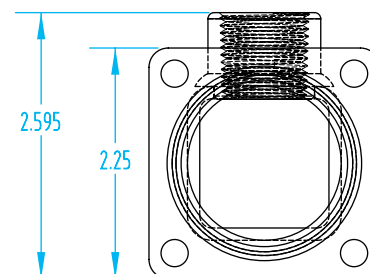
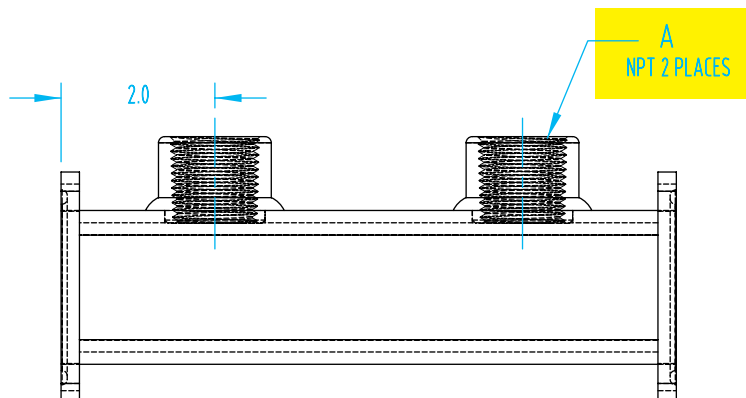
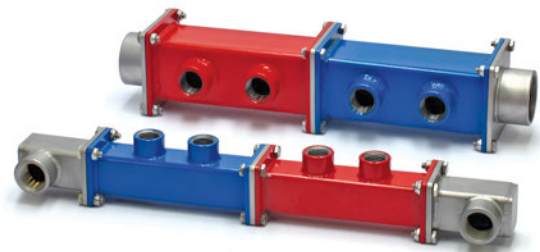
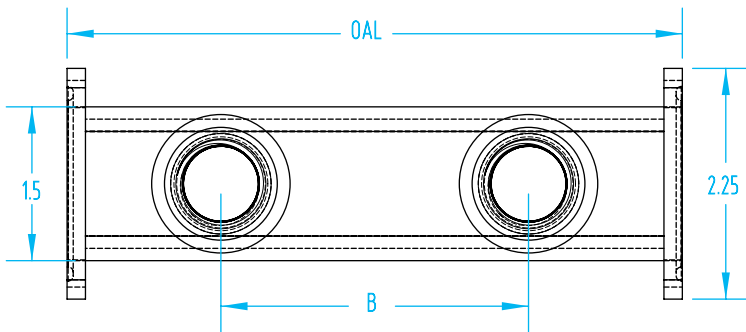
2-Port Segment

Quick#	Part#	Steel Type	A (Outlet Dim.)	B	OAL	Price
W826	SOS25X2R	Red	¼"	2"	6.0"	\$38
W413	SOS25X2B	Blue				\$38
W827	SOS25X2CR	Stainless				\$49
W842	SOS38X2R	Red	⅜"	2"	6"	\$38
W421	SOS38X2B	Blue				\$38
W843	SOS38X2CR	Stainless				\$49
W858	SOS50X2R	Red	½"	2.75"	6.75"	\$90
W429	SOS50X2B	Blue				\$90
W859	SOS50X2CR	Stainless				\$53
W874	SOS75X2R	Red	¾"	2.75"	6.75"	\$40
W437	SOS75X2B	Blue				\$40
W875	SOS75X2CR	Stainless				\$57
W890	SOS1X2R	Red	1"	2.75"	6.75"	\$40
W445	SOS1X2B	Blue				\$40
W891	SOS1X2CR	Stainless				\$62



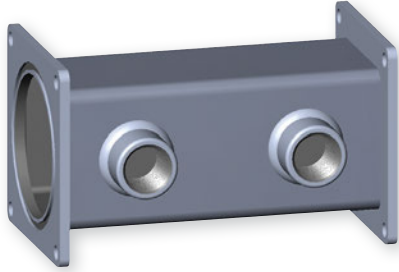
After choosing the correct size manifold, refer to pages 114–115 for end ports, blank end plates, or middle divider plates to complete your manifold. Brackets are also available.

Hardware/O-ring included with end ports or divider plates, but must be ordered separately if joining 2 segments together.



Configurable Manifold Series

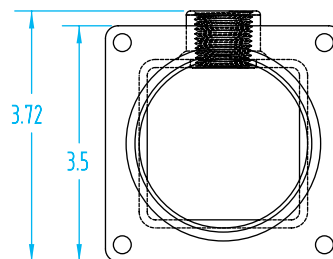
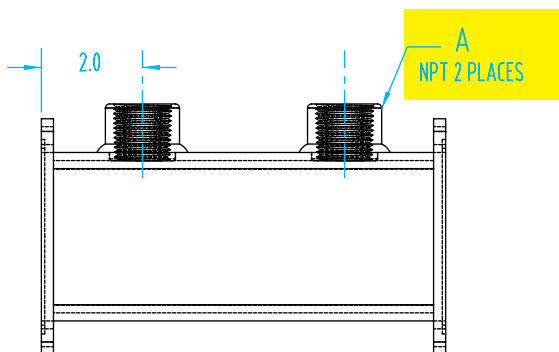
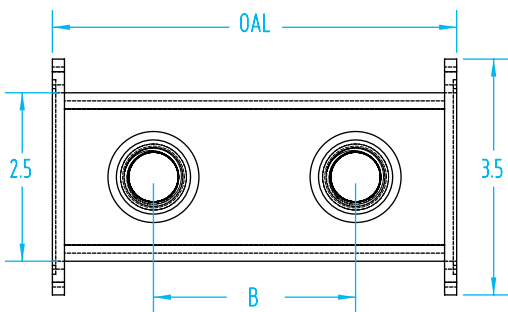
2½" Manifold Available in Powder Coated or Stainless Steel
2-Port Segment



Quick#	Part#	Steel Type	A (Outlet Dim.)	B	OAL	Price
W828	LOS25X2R	Red	¼"	2"	6.0"	\$40
W414	LOS25X2B	Blue				\$40
W829	LOS25X2CR	Stainless				\$62
W844	LOS38X2R	Red	⅜"	2"	6"	\$40
W422	LOS38X2B	Blue				\$40
W845	LOS38X2CR	Stainless				\$62
W860	LOS50X2R	Red	½"	2.75"	6.75"	\$42
W430	LOS50X2B	Blue				\$42
W861	LOS50X2CR	Stainless				\$65
W876	LOS75X2R	Red	¾"	2.75"	6.75"	\$43
W438	LOS75X2B	Blue				\$43
W877	LOS75X2CR	Stainless				\$70
W892	LOS1X2R	Red	1"	2.75"	6.75"	\$43
W446	LOS1X2B	Blue				\$43
W893	LOS1X2CR	Stainless				\$75
W906	LOS125X2R	Red	1¼"	3.5"	7.5"	\$46
W453	LOS125X2B	Blue				\$46
W907	LOS125X2CR	Stainless				\$85
W914	LOS150X2R	Red	1½"	3.5"	7.5"	\$51
W457	LOS150X2B	Blue				\$51
W915	LOS150X2CR	Stainless				\$108

After choosing the correct size manifold, refer to pages 114–115 for end ports, blank end plates, or middle divider plates to complete your manifold. Brackets are also available.

Hardware/O-ring included with end ports or divider plates, but must be ordered separately if joining 2 segments together.



Configurable Manifold Series

1½" Manifold Available in Powder Coated or Stainless Steel

4-Port Segment

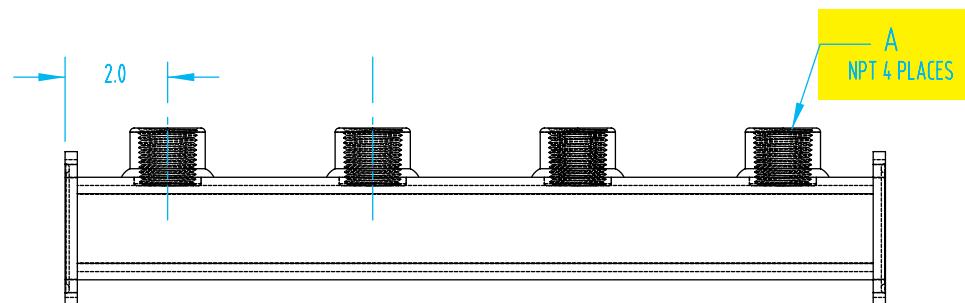
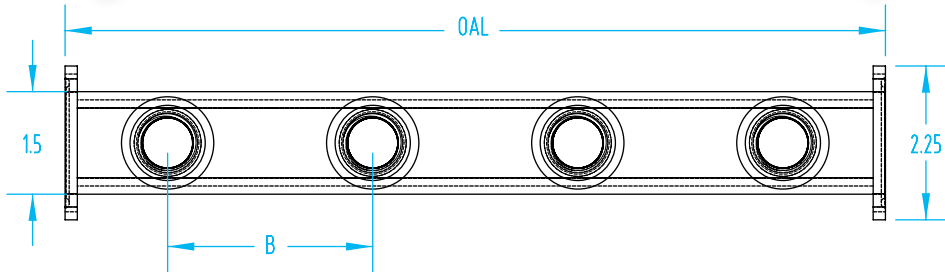
Quick#	Part#	Steel Type	A (Outlet Dim.)	B	OAL	Price
W830	SOS25X4R	Red	¼"	2"	10"	\$47
W415	SOS25X4B	Blue				\$47
W831	SOS25X4CR	Stainless				\$68
W846	SOS38X4R	Red	⅜"	2"	10"	\$48
W423	SOS38X4B	Blue				\$48
W847	SOS38X4CR	Stainless				\$68
W862	SOS50X4R	Red	½"	2.75"	12.25"	\$48
W431	SOS50X4B	Blue				\$48
W863	SOS50X4CR	Stainless				\$74
W878	SOS75X4R	Red	¾"	2.75"	12.25"	\$51
W439	SOS75X4B	Blue				\$51
W879	SOS75X4CR	Stainless				\$83
W894	SOS1X4R	Red	1"	2.75"	12.25"	\$52
W447	SOS1X4B	Blue				\$52
W895	SOS1X4CR	Stainless				\$94



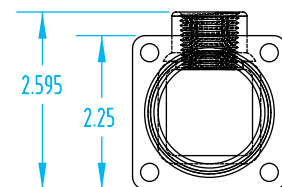
Shown above: 2½" powder coated red manifold, 1½" stainless steel manifold & 1½" blue manifold.

After choosing the correct size manifold, refer to pages 114–115 for end ports, blank end plates, or middle divider plates to complete your manifold. Brackets are also available.

Hardware/O-ring included with end ports or divider plates, but must be ordered separately if joining 2 segments together.



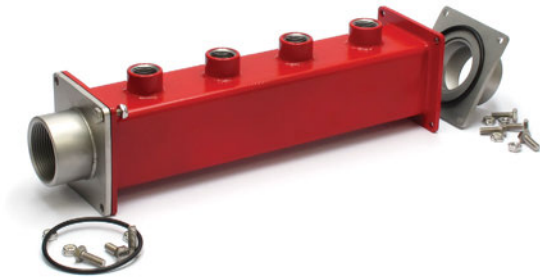
See pages 161–165 for hose, fittings, valves, and end plugs



Configurable Manifold Series

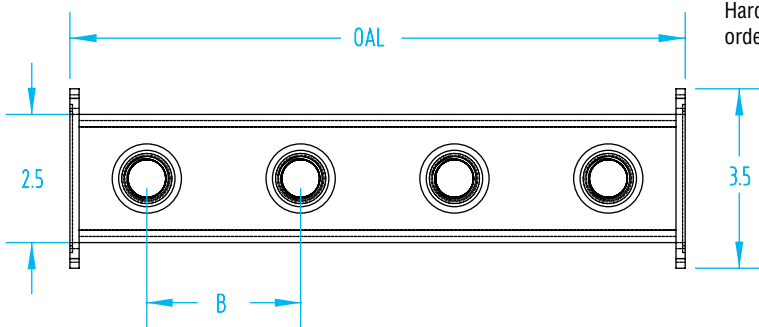
2½" Manifold Available in Powder Coated or Stainless Steel

4-Port Segment

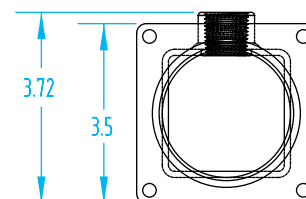
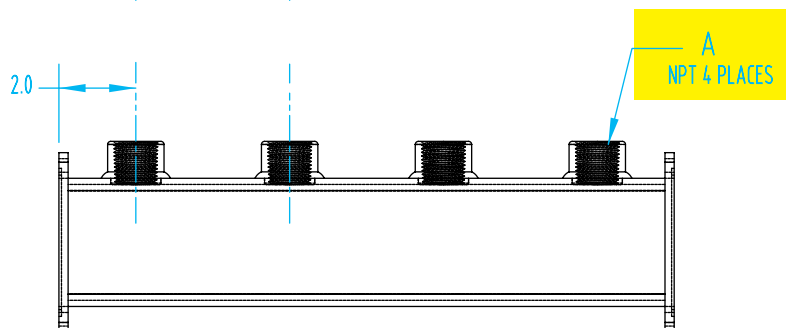


Quick#	Part#	Steel Type	A (Outlet Dim.)	B	OAL	Price
W832	LOS25X4R	Red	¼"	2"	10"	\$52
W416	LOS25X4B	Blue				\$52
W833	LOS25X4CR	Stainless				\$88
W848	LOS38X4R	Red	⅜"	2"	10"	\$52
W424	LOS38X4B	Blue				\$52
W849	LOS38X4CR	Stainless				\$88
W864	LOS50X4R	Red	½"	2.75"	12.25"	\$53
W432	LOS50X4B	Blue				\$53
W865	LOS50X4CR	Stainless				\$95
W880	LOS75X4R	Red	¾"	2.75"	12.25"	\$55
W440	LOS75X4B	Blue				\$55
W881	LOS75X4CR	Stainless				\$107
W896	LOS1X4R	Red	1"	2.75"	12.25"	\$57
W448	LOS1X4B	Blue				\$57
W897	LOS1X4CR	Stainless				\$114
W908	LOS125X4R	Red	1¼"	3.5"	14.5"	\$61
W454	LOS125X4B	Blue				\$61
W909	LOS125X4CR	Stainless				\$134
W916	LOS150X4R	Red	1½"	3.5"	14.5"	\$72
W458	LOS150X4B	Blue				\$72
W917	LOS150X4CR	Stainless				\$181

After choosing the correct size manifold, refer to pages 114–115 for end ports, blank end plates, or middle divider plates to complete your manifold. Brackets are also available.



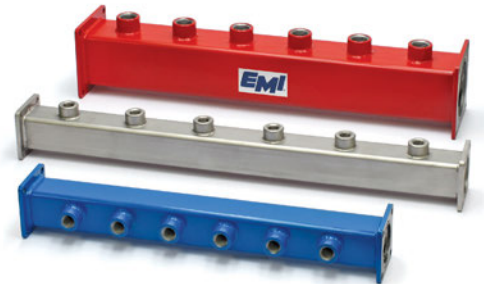
Hardware/O-ring included with end ports or divider plates, but must be ordered separately if joining 2 segments together.



Configurable Manifold Series

1½" Manifold Available in Powder Coated or 304 Stainless Steel
6-Port Segment

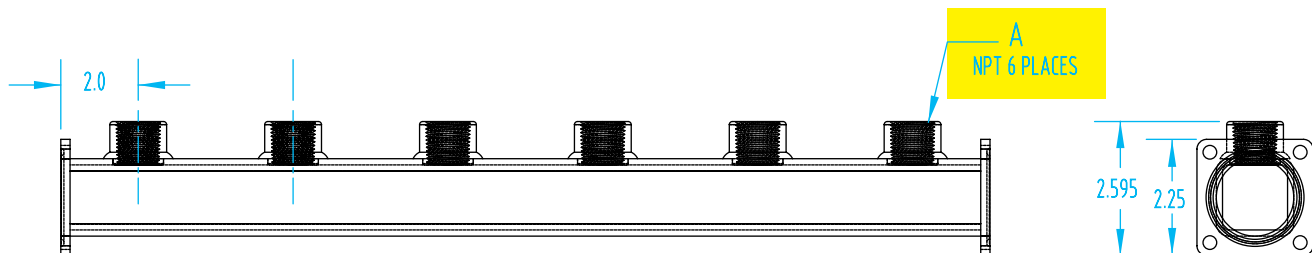
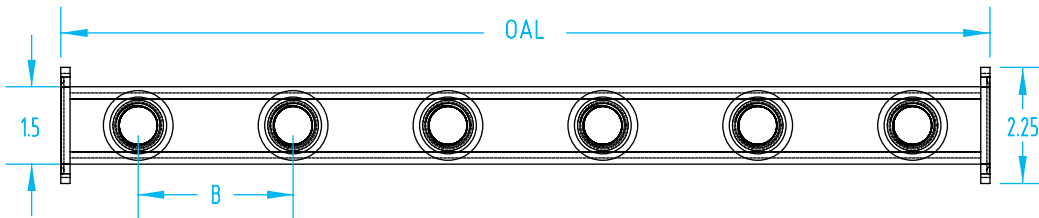
Quick#	Part#	Steel Type	A (Outlet Dim.)	B	OAL	Price
W834	SOS25X6R	Red	¼"	2"	14"	\$56
W417	SOS25X6B	Blue				\$56
W835	SOS25X6CR	Stainless				\$85
W850	SOS38X6R	Red	⅜"	2"	14"	\$57
W425	SOS38X6B	Blue				\$57
W851	SOS38X6CR	Stainless				\$87
W866	SOS50X6R	Red	½"	2.75"	17.75"	\$114
W433	SOS50X6B	Blue				\$59
W867	SOS50X6CR	Stainless				\$96
W882	SOS75X6R	Red	¾"	2.75"	17.75"	\$61
W441	SOS75X6B	Blue				\$61
W883	SOS75X6CR	Stainless				\$109
W898	SOS1X6R	Red	1"	2.75"	17.75"	\$65
W449	SOS1X6B	Blue				\$65
W899	SOS1X6CR	Stainless				\$125



After choosing the correct size manifold, refer to pages 114–115 for end ports, blank end plates, or middle divider plates to complete your manifold. Brackets are also available.

Hardware/O-ring included with end ports or divider plates, but must be ordered separately if joining 2 segments together.

When ordering, use Quick#s to ensure order accuracy.



Configurable Manifold Series

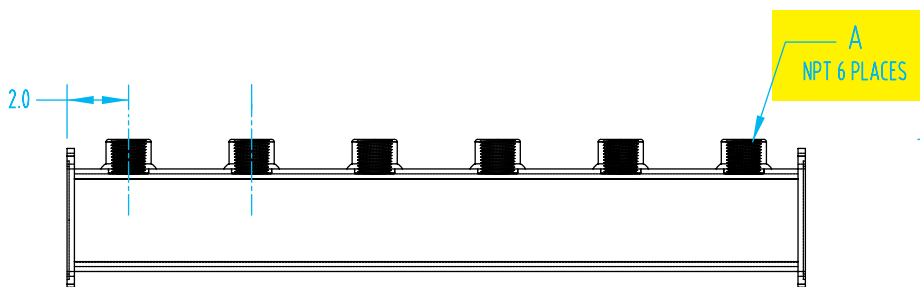
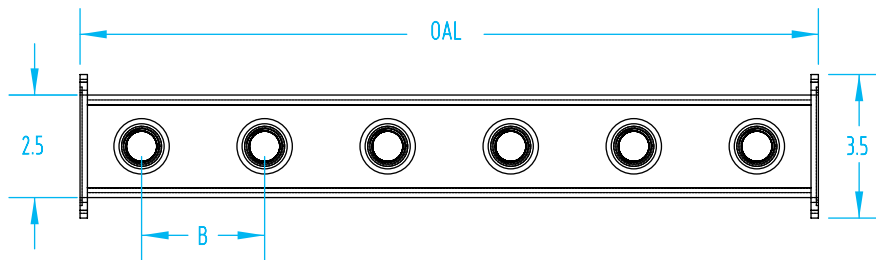
2½" Manifold Available in Powder Coated or 304 Stainless Steel
6-Port Segment



Quick#	Part#	Steel Type	A (Outlet Dim.)	B	OAL	Price
W836	LOS25X6R	Red	¼"	2"	14"	\$62
W418	LOS25X6B	Blue				\$62
W837	LOS25X6CR	Stainless				\$114
W852	LOS38X6R	Red	⅜"	2"	14"	\$119
W426	LOS38X6B	Blue				\$119
W853	LOS38X6CR	Stainless				\$116
W868	LOS50X6R	Red	½"	2.75"	17.75"	\$65
W434	LOS50X6B	Blue				\$65
W869	LOS50X6CR	Stainless				\$125
W884	LOS75X6R	Red	¾"	2.75"	17.75"	\$68
W442	LOS75X6B	Blue				\$68
W885	LOS75X6CR	Stainless				\$138
W900	LOS1X6R	Red	1"	2.75"	17.75"	\$70
W450	LOS1X6B	Blue				\$70
W901	LOS1X6CR	Stainless				\$155
W910	LOS125X6R	Red	1¼"	3.5"	21.5"	\$77
W455	LOS125X6B	Blue				\$77
W911	LOS125X6CR	Stainless				\$183
W918	LOS150X6R	Red	1½"	3.5"	21.5"	\$91
W459	LOS150X6B	Blue				\$91
W919	LOS150X6CR	Stainless				\$254

After choosing the correct size manifold, refer to pages 114–115 for end ports, blank end plates, or middle divider plates to complete your manifold. Brackets are also available.

Hardware/O-ring included with end ports or divider plates, but must be ordered separately if joining 2 segments together.



Configurable Manifold Series

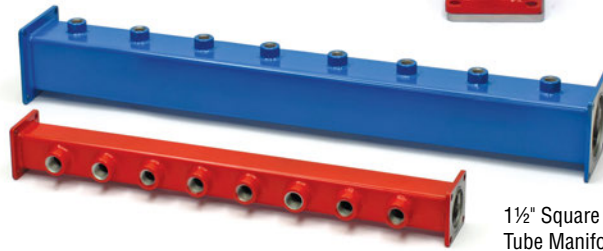
1½" Manifold Available in Powder Coated or Stainless Steel

8-Port Segment

Quick#	Part#	Steel Type	A (Outlet Dim.)	B	OAL	Price
W838	SOS25X8R	Red	¼"	2"	18"	\$65
W419	SOS25X8B	Blue				\$65
W839	SOS25X8CR	Stainless				\$103
W854	SOS38X8R	Red	⅜"	2"	18"	\$66
W427	SOS38X8B	Blue				\$66
W855	SOS38X8CR	Stainless				\$105
W870	SOS50X8R	Red	½"	2.75"	23.25"	\$69
W435	SOS50X8B	Blue				\$69
W871	SOS50X8CR	Stainless				\$118
W886	SOS75X8R	Red	¾"	2.75"	23.25"	\$72
W443	SOS75X8B	Blue				\$72
W887	SOS75X8CR	Stainless				\$135
W902	SOS1X8R	Red	1"	2.75"	23.25"	\$77
W451	SOS1X8B	Blue				\$77
W903	SOS1X8CR	Stainless				\$157

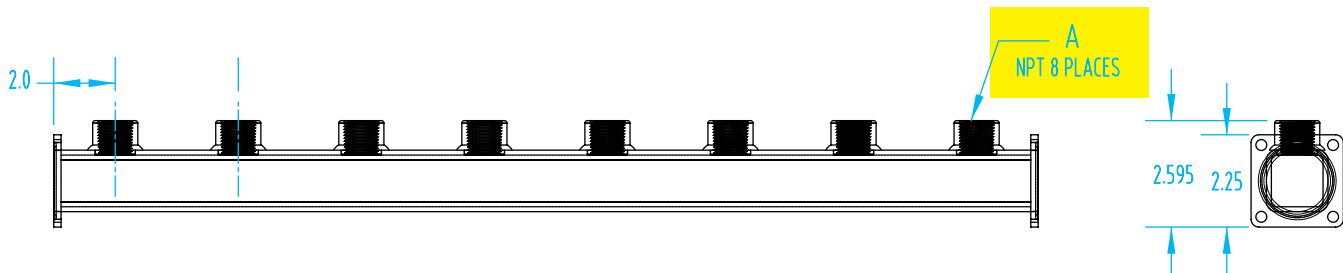
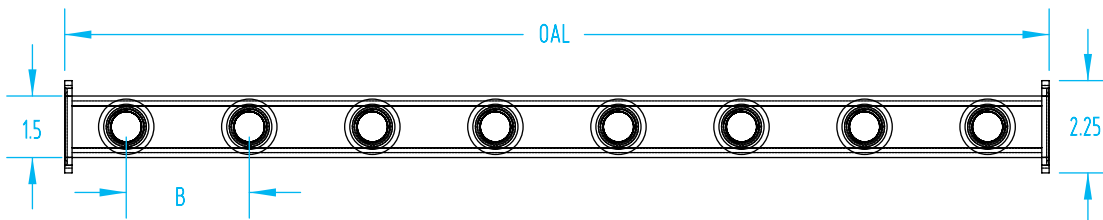
After choosing the correct size manifold, refer to pages 114–115 for end ports, blank end plates, or middle divider plates to complete your manifold. Brackets are also available.

Hardware/O-ring included with end ports or divider plates, but must be ordered separately if joining 2 segments together.



2½" Square Tube Manifold

1½" Square Tube Manifold



Configurable Manifold Series

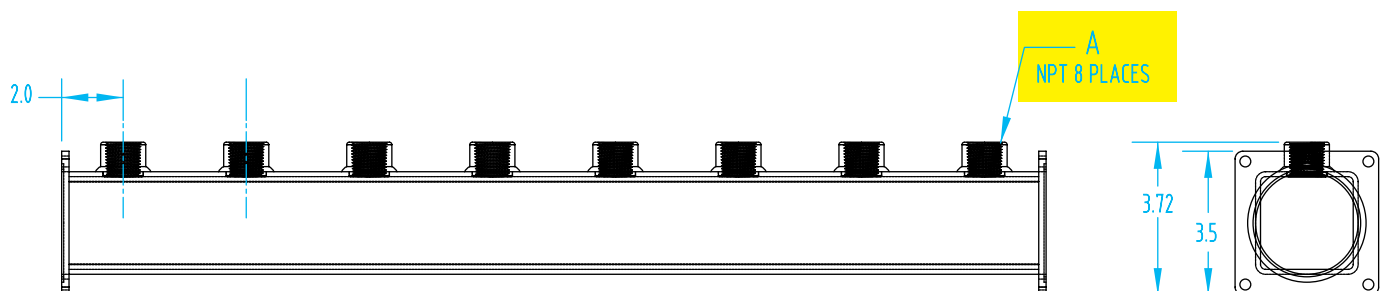
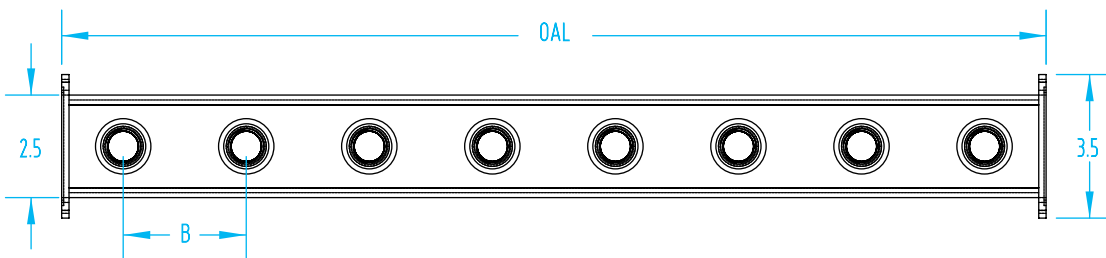
2½" Manifold Available in Powder Coated or Stainless Steel
8-Port Segment



Quick#	Part#	Steel Type	A (Outlet Dim.)	B	OAL	Price
W840	LOS25X8R	Red	¼"	2"	18"	\$73
W420	LOS25X8B	Blue				\$73
W841	LOS25X8CR	Stainless				\$140
W856	LOS38X8R	Red	⅜"	2"	18"	\$74
W428	LOS38X8B	Blue				\$74
W857	LOS38X8CR	Stainless				\$142
W872	LOS50X8R	Red	½"	2.75"	23.25"	\$77
W436	LOS50X8B	Blue				\$77
W873	LOS50X8CR	Stainless				\$155
W888	LOS75X8R	Red	¾"	2.75"	23.25"	\$79
W444	LOS75X8B	Blue				\$79
W889	LOS75X8CR	Stainless				\$172
W904	LOS1X8R	Red	1"	2.75"	23.25"	\$85
W452	LOS1X8B	Blue				\$85
W905	LOS1X8CR	Stainless				\$194
W912	LOS125X8R	Red	1¼"	3.5"	28.5"	\$92
W456	LOS125X8B	Blue				\$92
W913	LOS125X8CR	Stainless				\$233
W920	LOS150X8R	Red	1½"	3.5"	28.5"	\$112
W460	LOS150X8B	Blue				\$112
W921	LOS150X8CR	Stainless				\$326

After choosing the correct size manifold, refer to pages 114–115 for end ports, blank end plates, or middle divider plates to complete your manifold. Brackets are also available.

Hardware/O-ring included with end ports or divider plates, but must be ordered separately if joining 2 segments together.



Configurable Manifold Series

Stainless Steel Manifold End ports

2½" Stainless Steel End Ports



1½" Stainless Steel End Ports



2½" Stainless Steel 90° End Ports

1½" Stainless Steel 90° End Ports

Stainless Steel End Ports for 1½" Manifolds

Quick#	Part#	A (Outlet Dim.)	Price
W801	SES25CR	¼"	\$14
W805	SES38CR	⅜"	\$16
W809	SES50CR	½"	\$17
W813	SES75CR	¾"	\$18
W817	SES1CR	1"	\$21

Stainless Steel 90° End Ports for 1½" Manifolds

Quick#	Part#	A (Outlet Dim.)	Price
W788	S90S25CR	¼"	\$51
W789	S90S38CR	⅜"	\$51
W790	S90S50CR	½"	\$53
W791	S90S75CR	¾"	\$57
W792	S90S1CR	1"	\$64

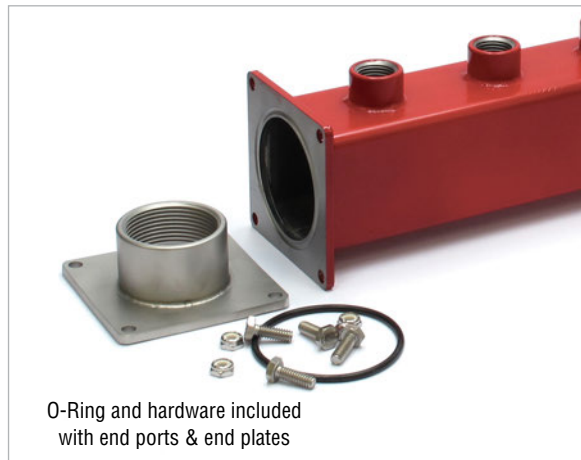
Stainless Steel End Ports for 2½" Manifolds

Quick#	Part#	A (Outlet Dim.)	Price
W803	LES25CR	¼"	\$17
W807	LES38CR	⅜"	\$31
W811	LES50CR	½"	\$20
W815	LES75CR	¾"	\$21
W819	LES1CR	1"	\$23
W821	LES125CR	1¼"	\$29
W823	LES150CR	1½"	\$39
W825	LES2CR	2"	\$51

Stainless Steel 90° End Ports for 2½" Manifolds

Quick#	Part#	A (Outlet Dim.)	Price
W793	L90S25CR	¼"	\$62
W794	L90S38CR	⅜"	\$64
W795	L90S50CR	½"	\$66
W796	L90S75CR	¾"	\$70
W797	L90S1CR	1"	\$75
W798	L90S125CR	1¼"	\$86
W799	L90S150CR	1½"	\$108

Hardware/O-ring included with end ports or divider plates, but must be ordered separately if joining 2 segments together.



O-Ring and hardware included with end ports & end plates



1½" manifold tube with 90° end port