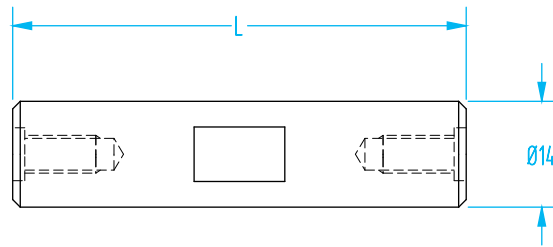
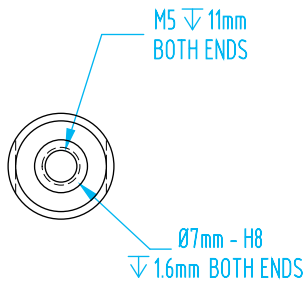
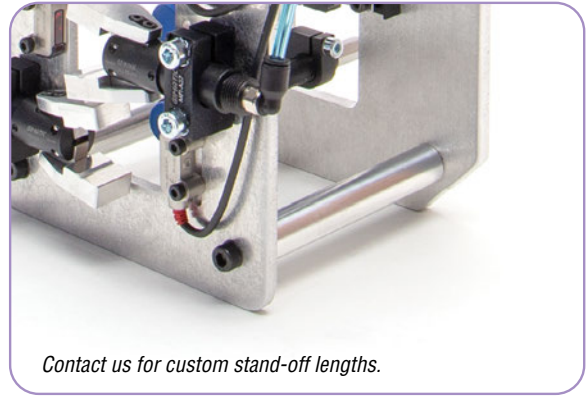
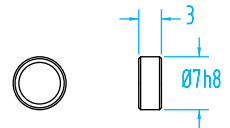


## Plate Stand-Off

- Precision stand-offs mount with M5 bolts and optional centering sleeves.
- Centering sleeves should be used when a tighter tolerance is required. For instance, in insert loading applications and degate operations.
- Can be used without centering sleeves.



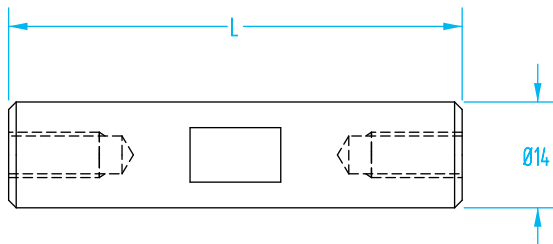
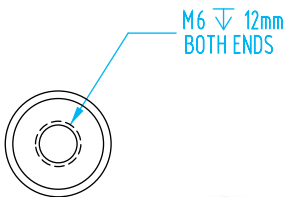
Centering Sleeve #6075



### Precision Stand Off

Quick#	Part#	Description	Length	Price	Wt.
582	GSS-14P-30	With M5 Tap & Ø7mm H8 C'bore	30mm	\$12.42	10g
589	GSS-14P-45		45mm	\$14.12	17g
590	GSS-14P-60		60mm	\$15.72	23g
591	GSS-14P-75		75mm	\$17.30	29g
<b>Centering Sleeve - Sold Individually</b>					
6075	ZBH-7	Ø7mm-h8		\$1.56	1g

- Standard stand-offs require M6 bolts and do not accept centering sleeves.
- Ø14mm clampable OD.



### Standard Stand Off

Quick#	Part#	Description	Length	Price	Wt.
5968	GSS-14-30	With M6 Tap	30mm	\$7.80	10g
5969	GSS-14-60		60mm	\$8.70	23g
5970	GSS-14-90		90mm	\$9.84	35g

Plate Stand-Off

Application Example

