

## Packaging Silicone Vacuum Cups – Coval FlowPack FPCA

FlowPack Cups are fully dedicated to handling packaging. A real technological breakthrough for a constantly evolving packaging method.

- Thin and wavy lips that perfectly mold to the packaging, whatever the shape.
- Internal cleats that allow for optimized vacuum while preventing any crushing and strengthen the hold on the product being handled.
- Fittings featuring a lateral vacuum distributor that prevent any loss in efficiency when the product is held.
- Assembly of cup and fitting required.
- Food-grade silicone and plastic insert meets FDA and CE standards.

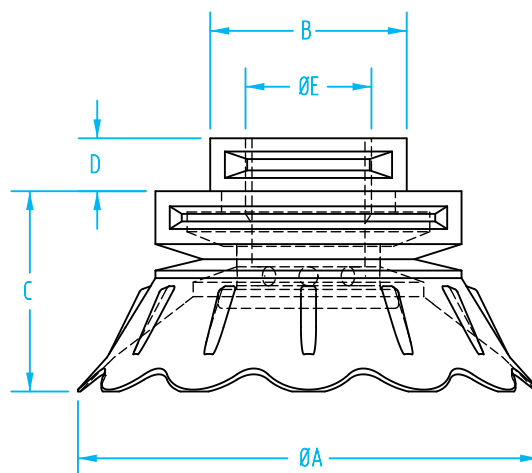
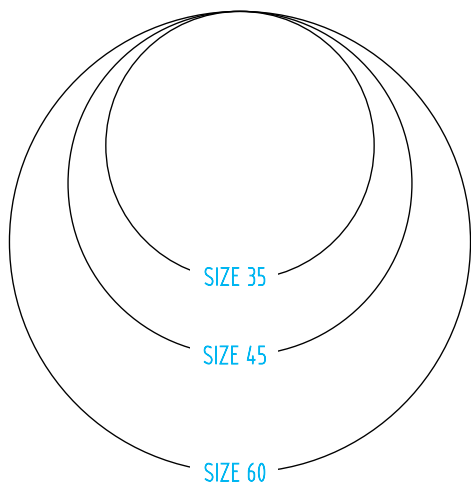
FlowPack Vacuum Cup Properties

| Material | Color      | Max Temp. | Durometer |
|----------|------------|-----------|-----------|
| Silicone | Light blue | 428°F     | 35°       |
| Silicone | Blue       | 428°F     | 50°       |



## Packaging Silicone Vacuum Cups – Coval FlowPack FPCA

(Dimensioned drawings shown full scale)



| Quick# | Part#            | ØA Diameter Cup                       | ØB (mm) | C (mm) | D (mm) | E (Nipple)            | Color      | Price   |         |
|--------|------------------|---------------------------------------|---------|--------|--------|-----------------------|------------|---------|---------|
| 8601   | FPCA-35-35S-G14F | Ø35.5mm                               | 19      | 28.5   | 7      | Includes Female G1/4" | Light Blue | \$54.85 |         |
| 8602   | FPCA-35-50S-G14F |                                       | 19      | 28.5   | 7      |                       | Blue       | \$54.85 |         |
| 8603   | FPC-35-35S       |                                       | -       | 28.5   | -      | Requires Female G1/4" | Light Blue | \$21.95 |         |
| 8604   | FPC-35-50S       |                                       | -       | 28.5   | -      |                       | Blue       | \$21.95 |         |
| 8605   | FPN-35-G14F      | Female G1/4" Nipple                   |         |        |        |                       |            |         | \$13.20 |
| 8606   | FPI-FPC-35       | Plastic Insert for Ø35mm FlowPack Cup |         |        |        |                       |            |         | \$19.75 |
| 8607   | FPCA-45-35S-G38F | Ø45.5mm                               | 26      | 23     | 7      | Includes Female G3/8" | Light Blue | \$47.80 |         |
| 8608   | FPCA-45-50S-G38F |                                       | 26      | 23     | 7      |                       | Blue       | \$47.80 |         |
| 8609   | FPC-45-35S       |                                       | -       | 23     | -      | Requires Female G3/8" | Light Blue | \$16.85 |         |
| 8610   | FPC-45-50S       |                                       | -       | 23     | -      |                       | Blue       | \$16.85 |         |
| 8611   | FPN-45-60-G38F   | Female G3/8" Nipple                   |         |        |        |                       |            |         | \$31.00 |
| 8612   | FPCA-60-35S-G38F | Ø61.5mm                               | 26      | 26.5   | 7      | Includes Female G3/8" | Light Blue | \$54.85 |         |
| 8613   | FPCA-60-50S-G38F |                                       | 26      | 26.5   | 7      |                       | Blue       | \$54.85 |         |
| 8614   | FPC-60-35S       |                                       | -       | 26.5   | -      | Requires Female G3/8" | Light Blue | \$21.95 |         |
| 8615   | FPC-60-50S       |                                       | -       | 26.5   | -      |                       | Blue       | \$21.95 |         |
| 8611   | FPN-45-60-G38F   | Female G3/8" Nipple                   |         |        |        |                       |            |         | \$31.00 |

Use Quick#s for easy online ordering.

- CU
- QC
- VG
- VC**
- VA
- SG
- GR
- MT
- AC
- CS
- CC

## Packaging Silicone Vacuum Cups – Coval FlowPack FPCA



FlowPack Cups are fully dedicated to handling packaging. A real technological breakthrough for a constantly evolving packaging method.

- Thin and wavy lips that perfectly mold to the packaging, whatever the shape.
- Internal cleats that allow for optimized vacuum while preventing any crushing and strengthen the hold on the product being handled.
- Fittings featuring a lateral vacuum distributor that prevent any loss in efficiency when the product is held.
- Assembly of cup and fitting required.
- Food-grade silicone and plastic insert meets FDA and CE standards.

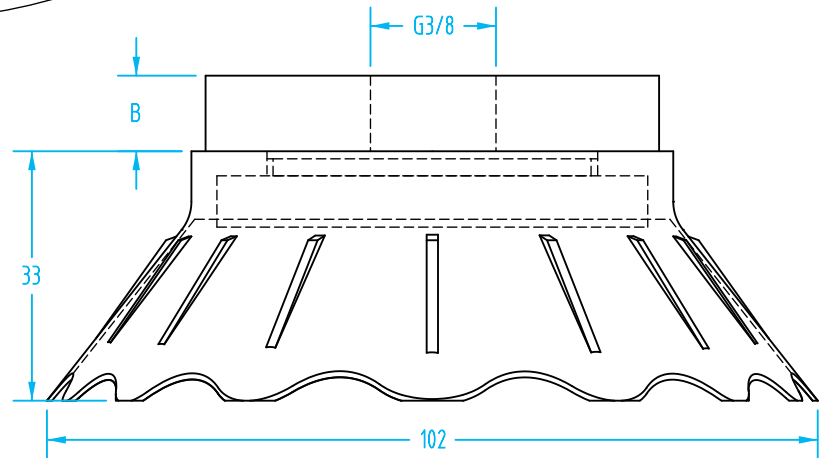
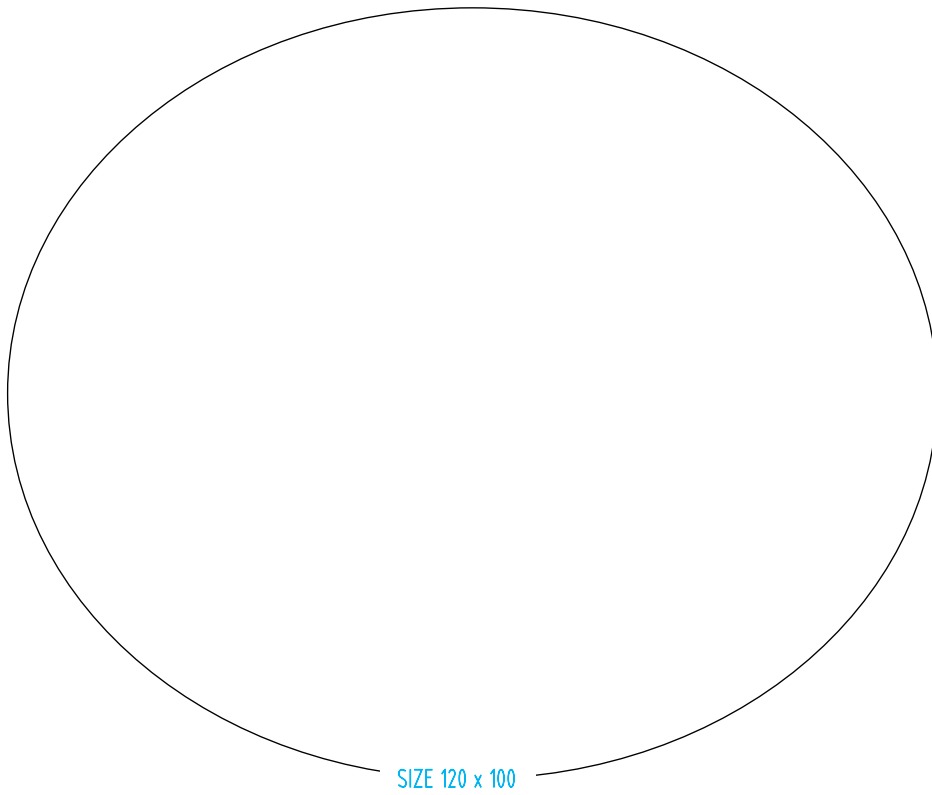
FlowPack Vacuum Cup Properties

| Material | Color      | Max Temp. | Durometer |
|----------|------------|-----------|-----------|
| Silicone | Light blue | 428°F     | 35°       |
| Silicone | Blue       | 428°F     | 50°       |



## Packaging Silicone Vacuum Cups – Coval FlowPack FPCA

(Dimensioned drawings shown full scale)



- CU
- QC
- VG
- VC**
- VA
- SG
- GR
- MT
- AC
- CS
- CC

| Quick# | Part#                | ØDiameter                            | B (mm) | Nipple                | Color      | Price    |
|--------|----------------------|--------------------------------------|--------|-----------------------|------------|----------|
| 8616   | FPCA-120100-35S-G38F | 123mm x 102mm                        | 10     | Includes Female G3/8" | Light Blue | \$132.00 |
| 8617   | FPCA-120100-50S-G38F |                                      |        |                       | Blue       | \$132.00 |
| 8618   | FPC-120100-35S       |                                      | -      | Requires Female G3/8" | Light Blue | \$65.85  |
| 8619   | FPC-120100-50S       |                                      |        |                       | Blue       | \$65.85  |
| 8620   | FPN-120100-G38F      | Female G3/8" for 120x100mm cup       |        |                       |            | \$44.60  |
| 8621   | FPN-120100-BP        | (2x) M4x16 SS Screws for Quick# 8620 |        |                       |            | \$21.95  |