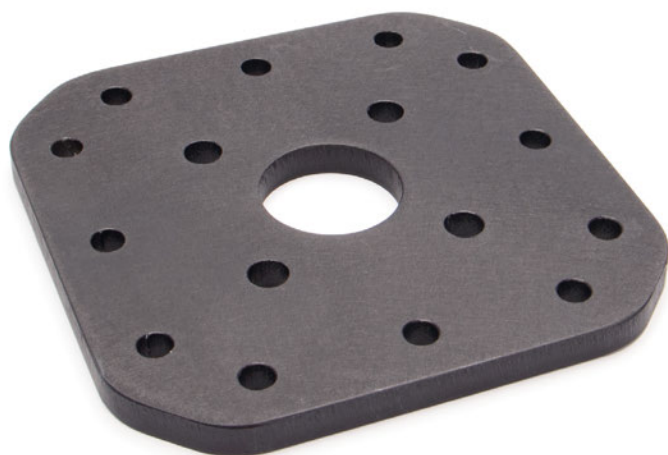


Interface Plate for Modular Profile Kit

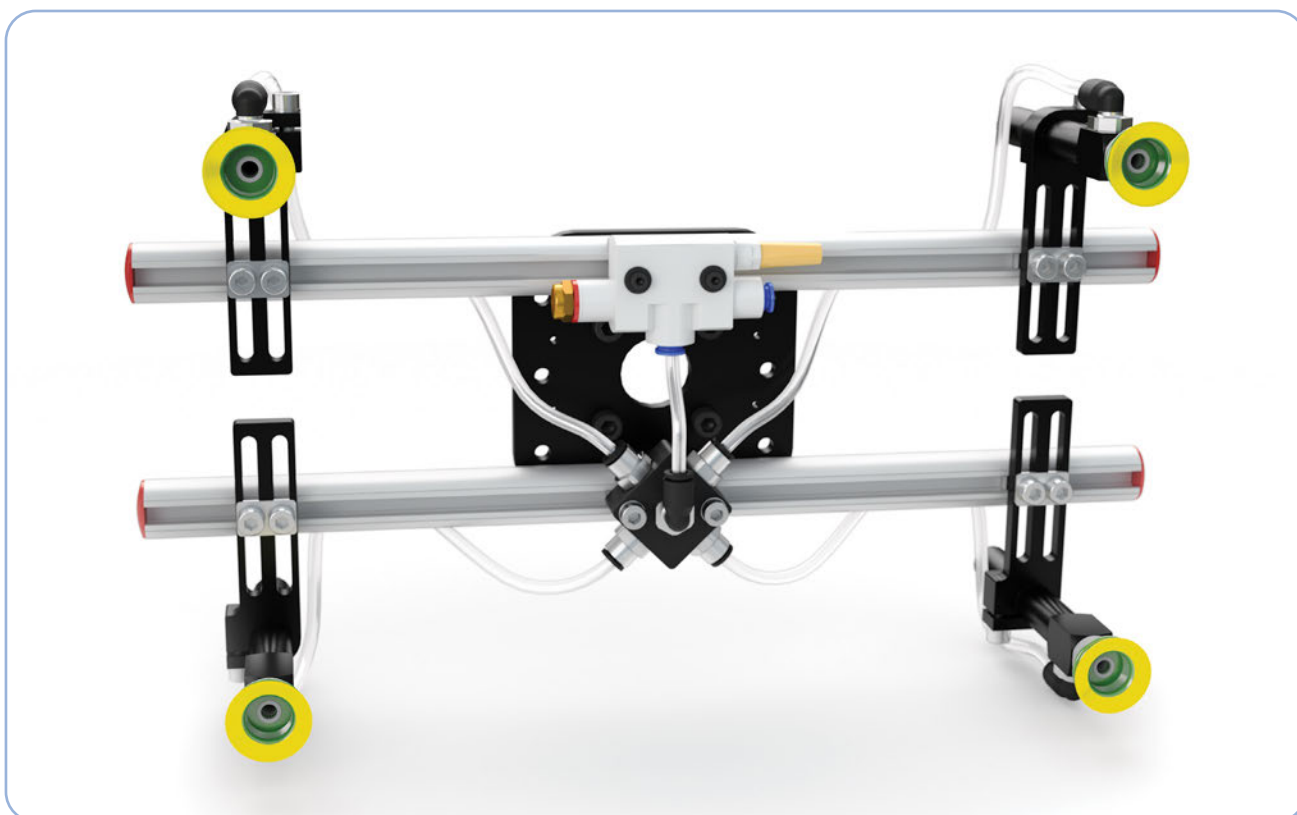


Build your own Vacuum EOAT!

Start with this compact and versatile plate at a great price!

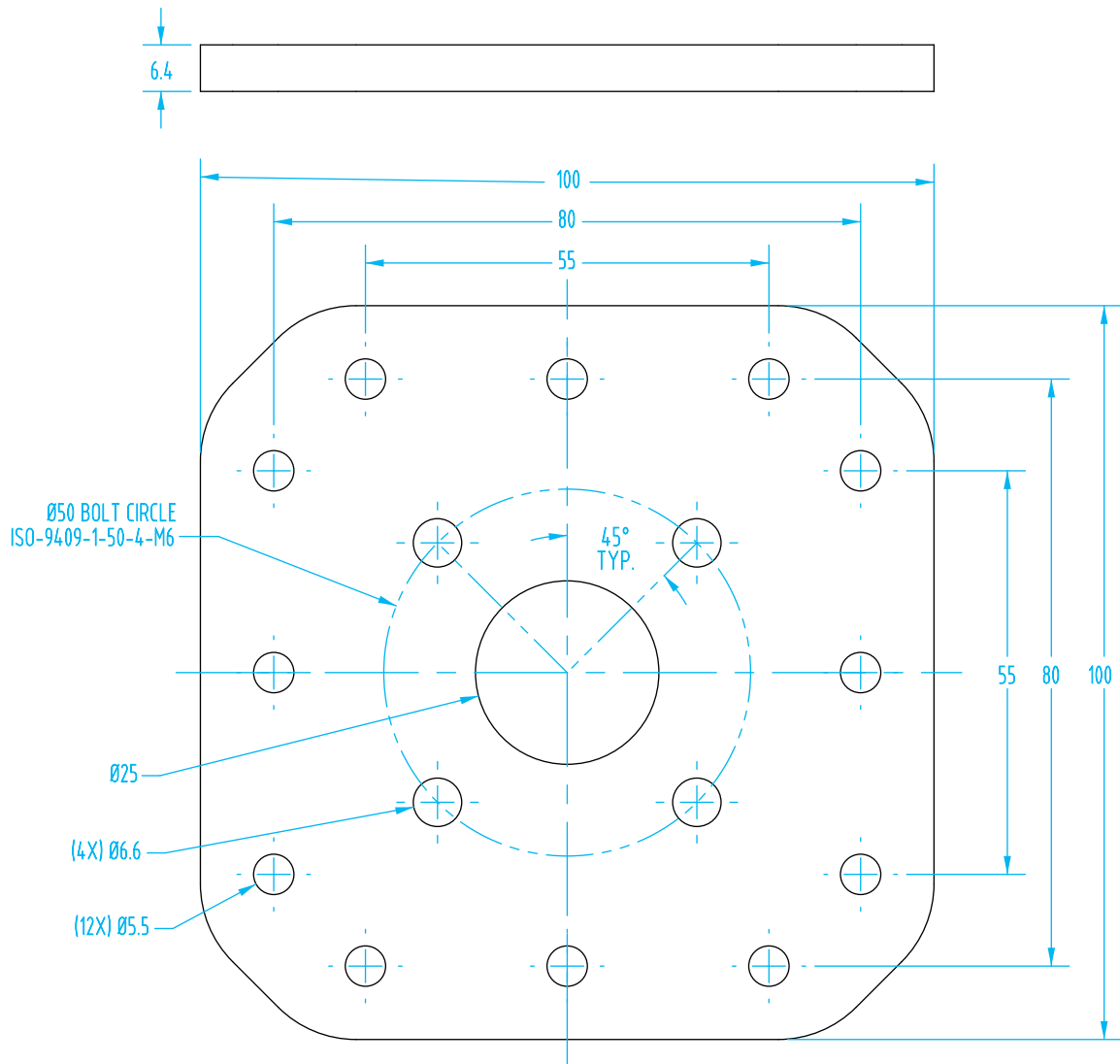
Quick#	Part#	Price	Wt.
8058	CRM-0138-2A	\$28.13	151g

- Lightweight aluminum plate compatible with the ISO 9409-1-50-4-M6 mounting pattern.
- Can be manufactured to fit any robot.
- Quick# 8058 is included with our Modular Profile Vacuum Kit #8005 on page 82.
- Hardware sold separately.



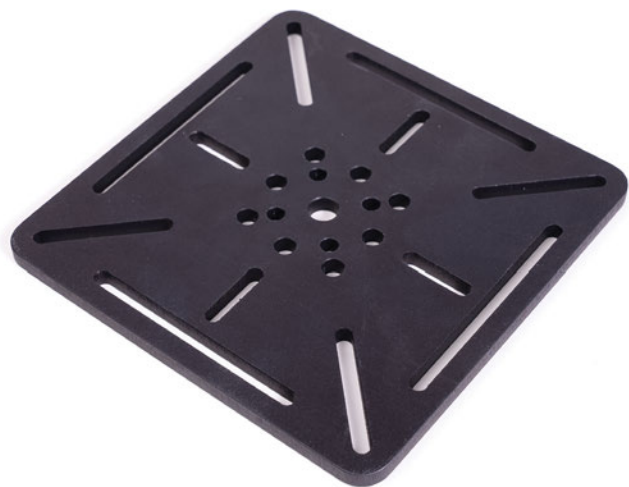
Interface Plate for Modular Profile Kit

(Dimensioned drawings shown full scale)



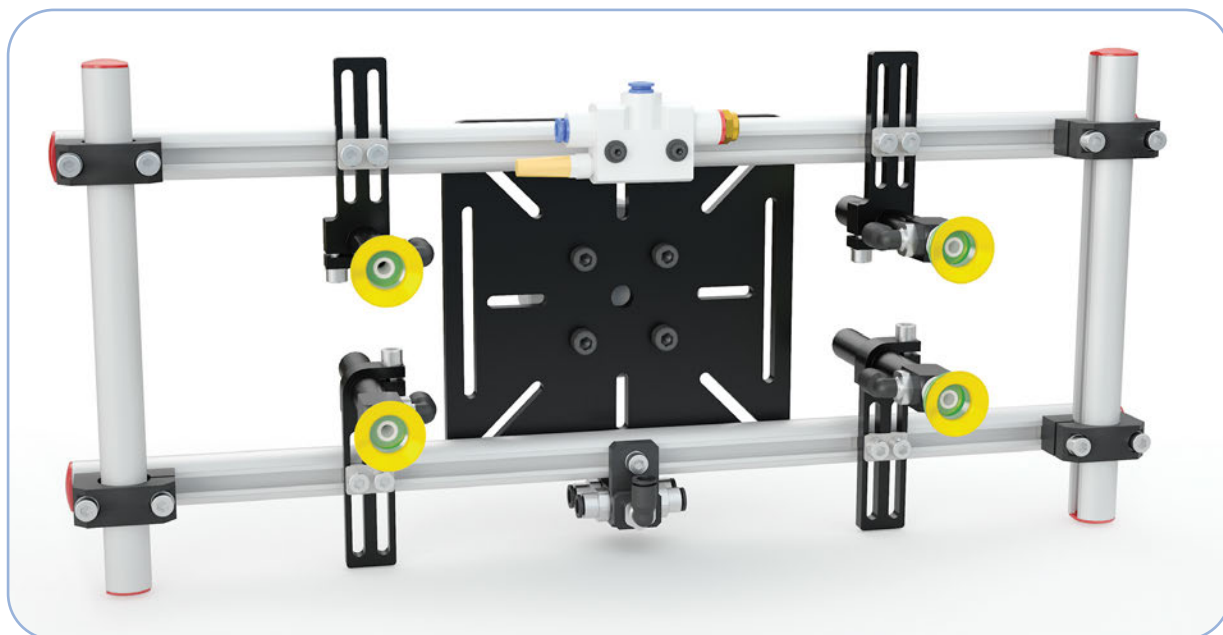
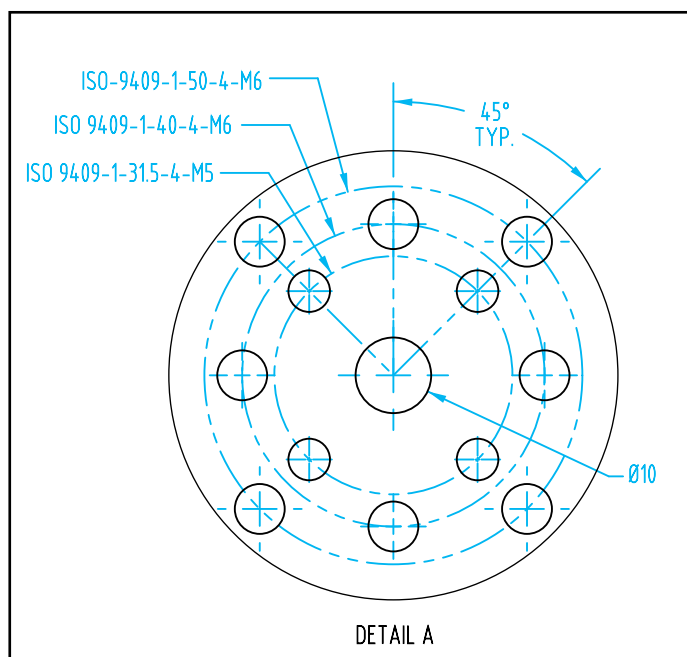
- CU
- QC
- VG
- VC
- VA
- SG
- GR
- MT
- AC
- CS
- CC

Interface Plate for Modular Profile Kit



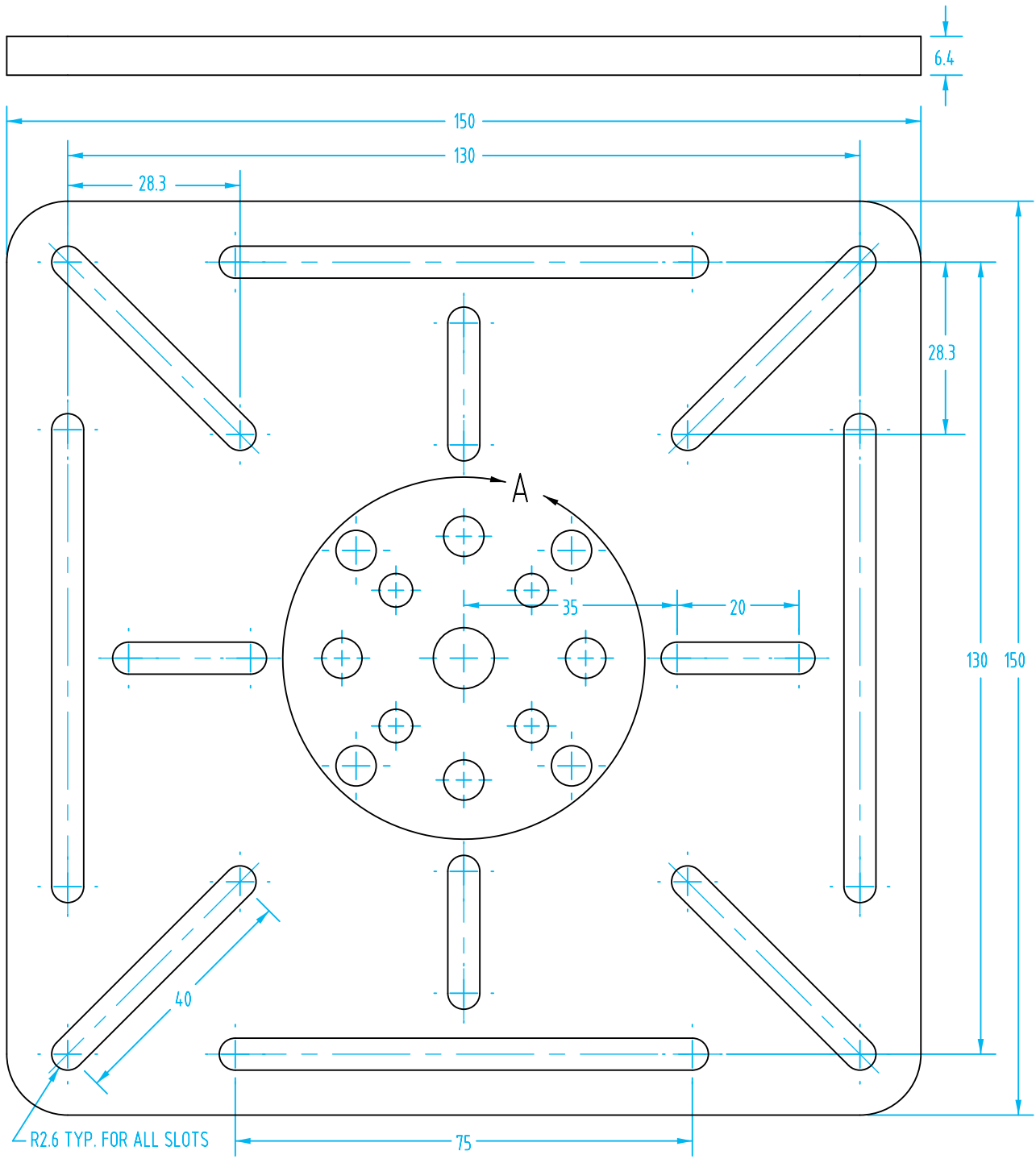
Quick#	Part#	Price	Wt.
8057	CRM-0337-1A	\$31.85	324g

- Lightweight aluminum plate compatible with:
ISO 9409-1-31.5-4-M5
ISO 9409-1-40-4-M6
ISO 9409-1-50-4-M6 mounting patterns.
- Quick# 8057 is included with our Modular Profile Vacuum Kit #8005 on page 82.
- Designed with slots for quick adjustments.
- Hardware sold separately.



Interface Plate for Modular Profile Kit

(Dimensioned drawings shown full scale)



- CU
- QC
- VG
- VC
- VA
- SG
- GR
- MT
- AC
- CS
- CC

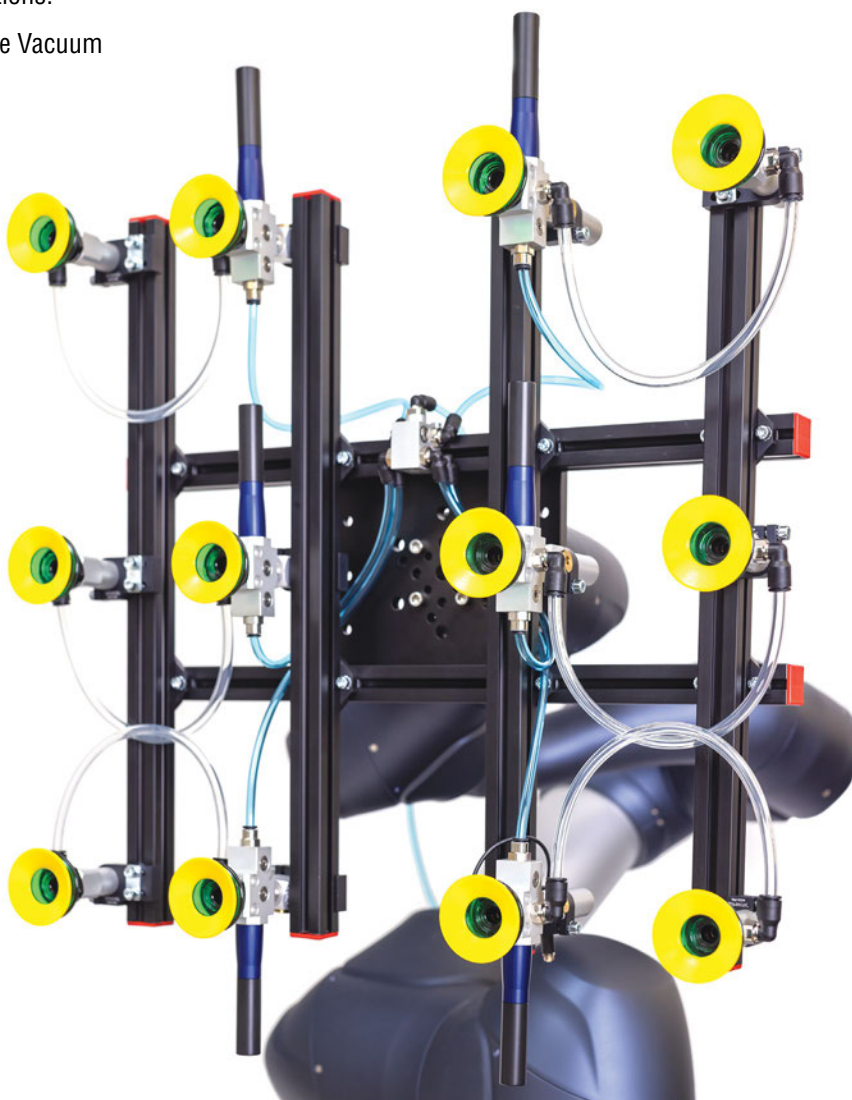
Interface Plate for Modular Profile Kit II



Start designing your large gripper with this plate. Compatible with larger and smaller robots, designed for larger payloads and compatible with 40mm aluminum profile.

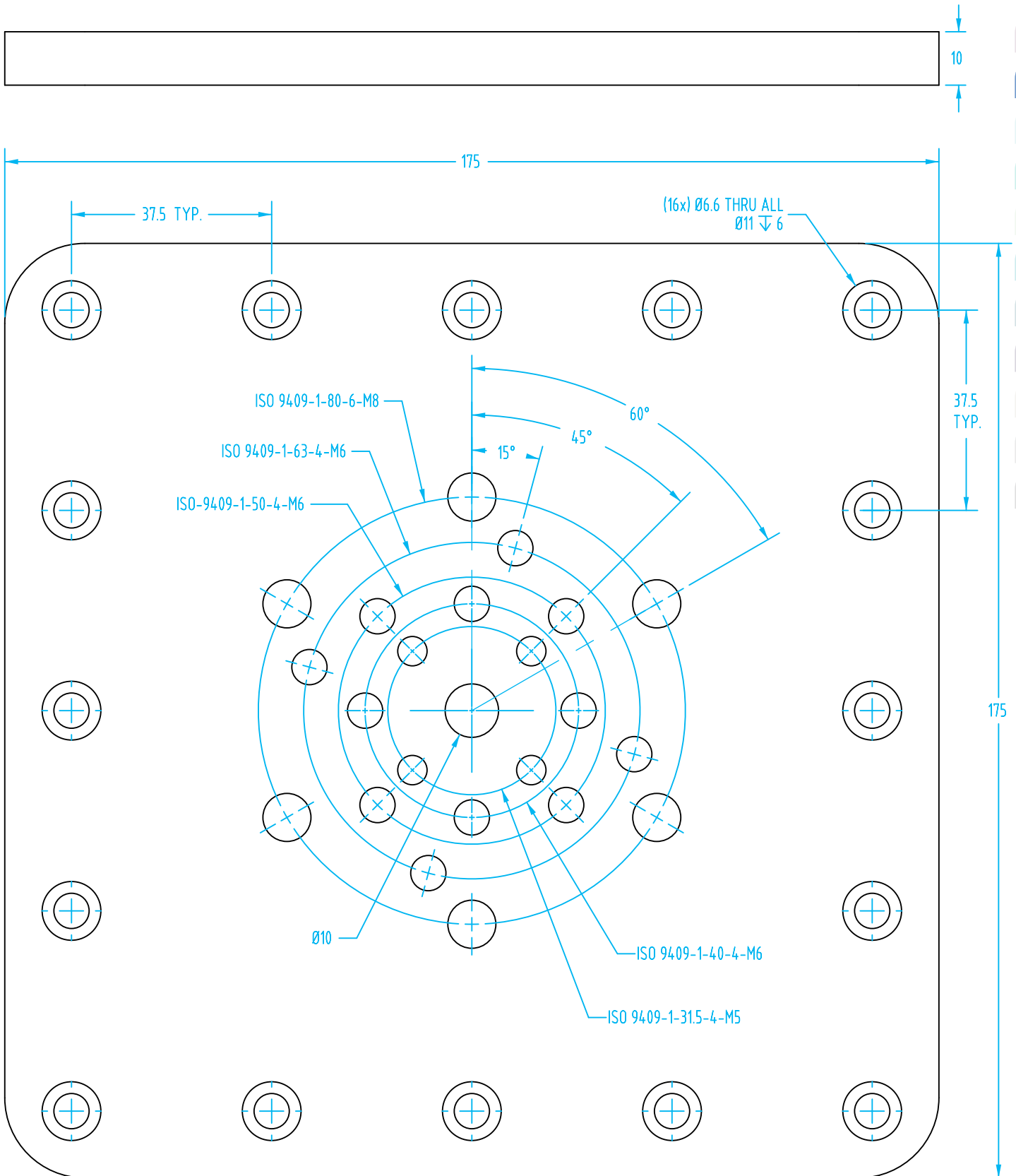
Quick#	Part#	Price	Wt.
8063	CRM-0337-2A	\$63.45	765g

- 10mm plate thickness for heavy-duty applications.
- Quick# 8063 is included in the Modular Profile Vacuum Kit II #8004 on page 86 (shown here).
- Hardware sold separately.
- Anodized plate compatible with:
 - ISO 9409-1-31.5-4-M5
 - ISO 9409-1-40-4-M6
 - ISO 9409-1-50-4-M6
 - ISO 9409-1-63-4-M6
 - ISO 9409-1-80-6-M8



Interface Plate for Modular Profile Kit II

(Dimensioned drawings shown full scale)



- CU
- QC
- VG
- VC
- VA
- SG
- GR
- MT
- AC
- CS
- CC

Quick Changer Interface Plate

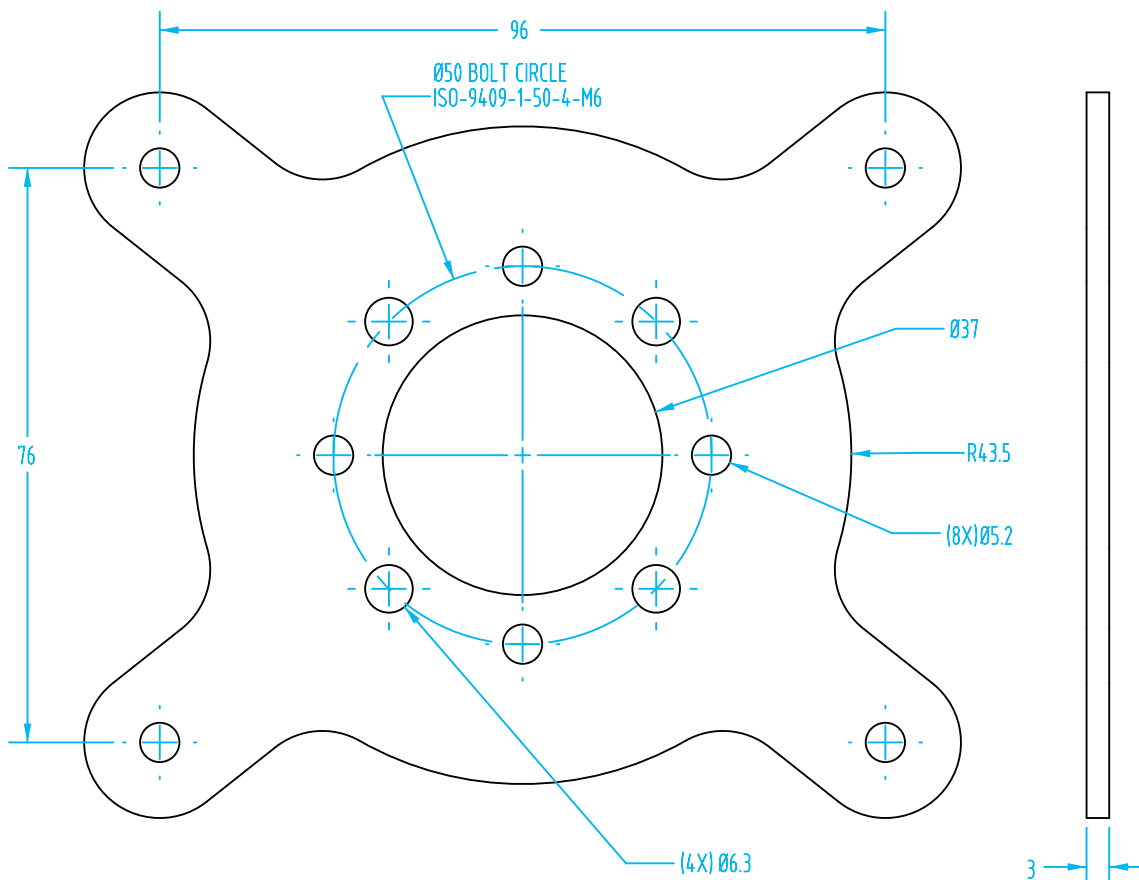
(Dimensioned drawings shown full scale)



Quick#	Part#	Price	Wt.
7435	MFI-A372	\$29.29	218g

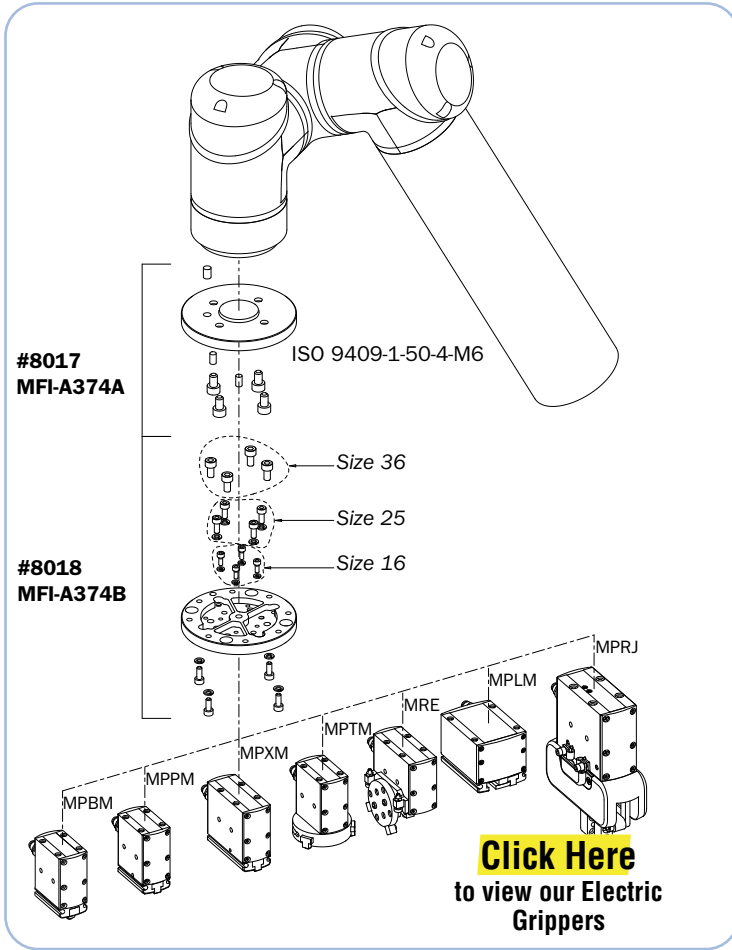
Use Quick#s for easy online ordering.

- Steel plate compatible with the ISO 9409-1-50-4-M6 mounting pattern.
- Mounts directly to QC75, QC90, GSQ-G Quick Changers.
- Hardware included.



Interface for Mounting Electric Grippers

(Dimensioned drawings shown full scale)



#8017

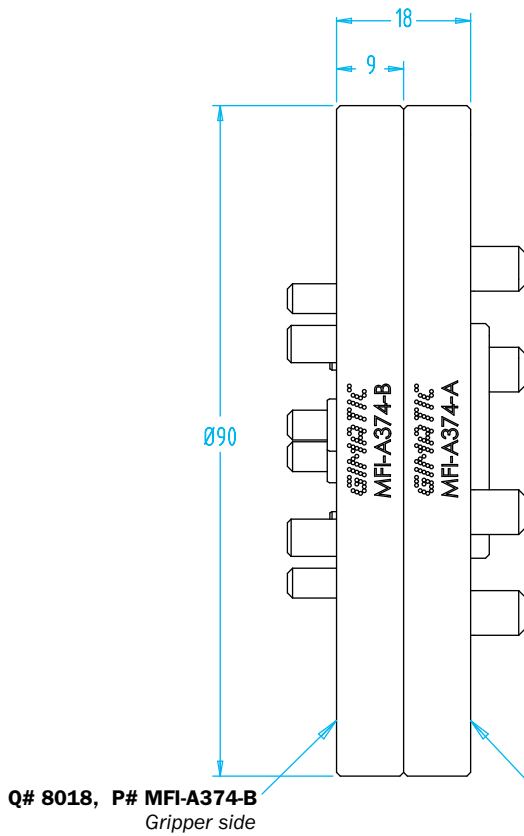


#8018

Quick#	Part#	Price	Wt.
8017	MFI-A374A	\$62.50	50g
8018	MFI-A374B	\$83.00	55g

- Compatible with the ISO 9409-1-50-4-M6 mounting pattern.
- Hardware included.
- Adapts to all Gimatic Electric Grippers, see page 216 for photos and more information.

- CU
- QC
- VG
- VC
- VA
- SG
- GR
- MT
- AC
- CS
- CC



Q# 8018, P# MFI-A374-B
Gripper side

Q# 8017, P# MFI-A374-A
ISO 9409-1-50-4-M6 Robot side

