

Automatic Quick Changer – Gimatic EQC05



#8159 – EOAT-Side Electric Quick Changer



#8158 – EOAT-Side Electric Quick Changer

The EQC05 offers the same convenience and simplicity of an automatic quick change tool system, but in a more compact package intended for light duty application. Electrical Quick Changers are designed to connect to the wrist of Universal Robots and other Collaborative Robots. The optional electric connectors can be positioned in the central through hole.

Automatic Tool Changers require some level of added integration, and we encourage you to partner with our EOAT Engineers to ensure a seamless implementation.

- **Suggested payload: 11 lbs (5kg)**
- Three Integrated Ø4mm air fittings.
- Position confirmation sensing.
- Optional electrical connectors to be positioned in the central through hole.
- Separate adapter plate available for ISO 9409-1-50-4-M6 and 9409-1-63-4-M6 robot flanges, see page 42.
- Optional docking pins for storage, see page 42.

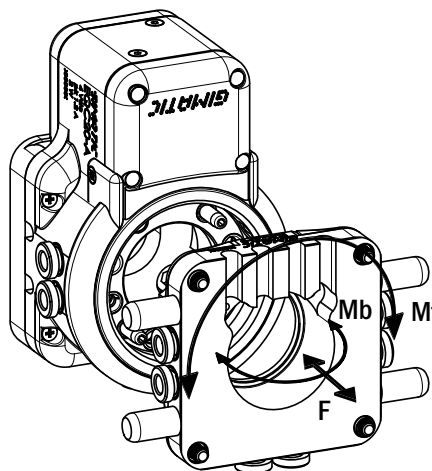
Quick#	Part#	Description	Weight	Price
8157	EQC05-A	Robot-Side with Male M8 Connection	500g	\$1,425.00
8159	EQC05N-A	Robot-Side with Female M8 Connection - For UR & Fanuc CRX	500g	\$1,555.00
8158	EQC05-B	EOAT-Side	100g	\$203.00

Safety loads

Check the table for the maximum loads allowed. Excessive forces or torques can damage the system, cause operation problems and endanger the safety of the operator.

Specifications for Quick Changer EQC05		
Weight	Robot Side	500g
	EOAT Side	100g
Suggested Max. Payload	11 lbs (5 kg)	
Maximum Air Pressure	6 bar (87psi)	
Air Ports	(3x) Ø4mm	
Electrical Connector	Optional	
Safety Loads:		
F 112 lbs	Mt 5.9 ft-lbs	Mb 5.9 ft-lbs

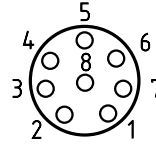
F= Axial Load Limit Mt= Torque Moment Limit
Mb= Bending Moment Limit



Automatic Quick Changer – Gimatic EQC05

Electrical Operation Cable

The electrical quick changer is equipped with an 8-pin M8 female connector that provides a 24Vdc power supply for the locking/unlocking command and for the connection of the digital outputs that identify the coupled and uncoupled system status. No additional external electronic control system is required.



- 1 - White: N/C
- 2 - Brown: N/C
- 3 - Green: Out Closed (PNP)
- 4 - Yellow: Out Opened (PNP)
- 5 - Grey: 24V DC
- 6 - Pink: Open / Close (PNP)
- 7 - Blue: N/C
- 8 - Red: GND

**Note: Q#8150 Pinout shown. Varies by model.*

Electrical Connectors

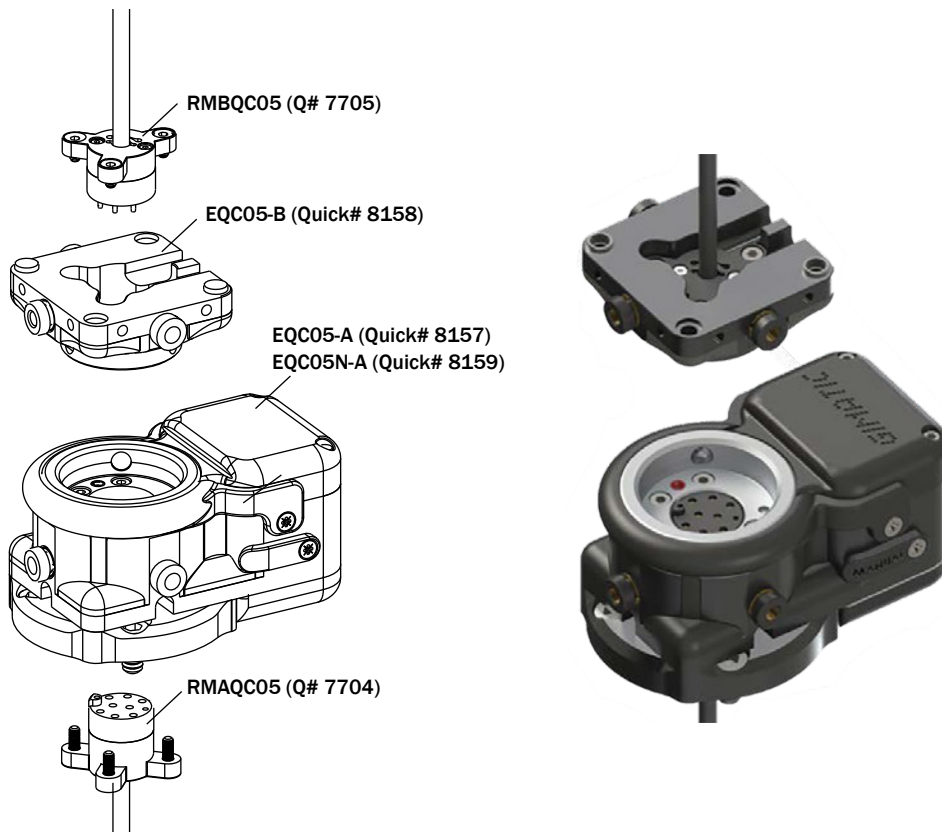


#7704 – Robot-Side Electrical Connector



#7705 – EOAT-Side Electrical Connector

Quick#	Part#	Description	Weight	Price
7704	RMAQC05	Robot-Side Electrical Connector, 8 Connections	50g	\$55.85
7705	RMBQC05	EOAT-Side Electrical Connector, 8 Connections	70g	\$89.36



- CU
- QC
- VG
- VC
- VA
- SG
- GR
- MT
- AC
- CS
- CC

Automatic Quick Changer – Gimatic EQC05

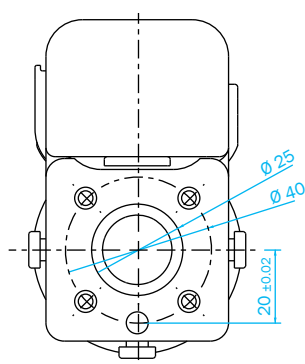


#8160

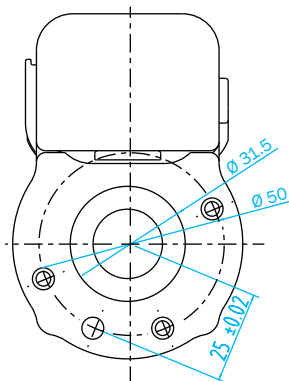


#8161

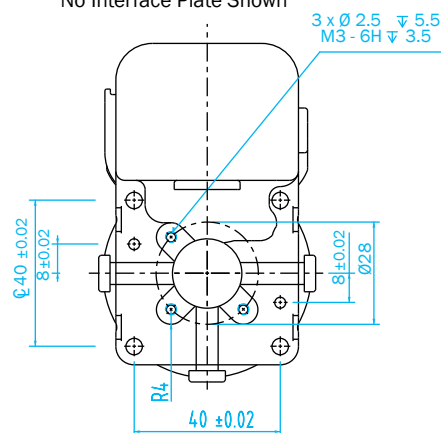
Q#8160 EQC05-K40
ISO 9409-1-40-4-M6



Q#8161 EQC05-K50
ISO 9409-1-50-4-M6



Robot Side EQC05
No Interface Plate Shown

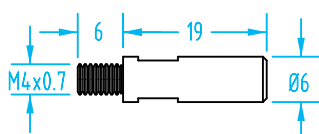


Robot-Side Interface Plates

Quick#	Part#	Description	Weight	Price
8160	EQC05-K40	with ISO 9409-1-40-4-M6 interface	80g	\$69.55
8161	EQC05-K50	with ISO 9409-1-50-4-M6 interface	80g	\$82.70

Storage Docking Pins

These pins are recommended for storage of your EOAT and are supplied separately. Contact EMI for a cradle for your EOAT.



#8162

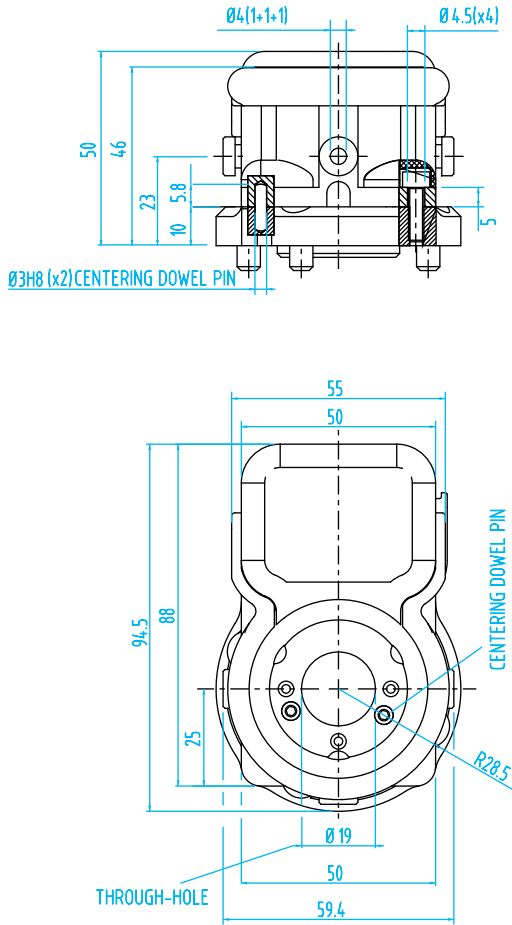
Storage Docking Pins

Quick#	Part#	Description	Weight	Price
8162	EQC05-K1	Storage Docking Pins for EOAT-Side (x4)	13g	\$29.74

Automatic Quick Changer – Gimatic EQC05

(Dimensioned drawings reduced to fit)

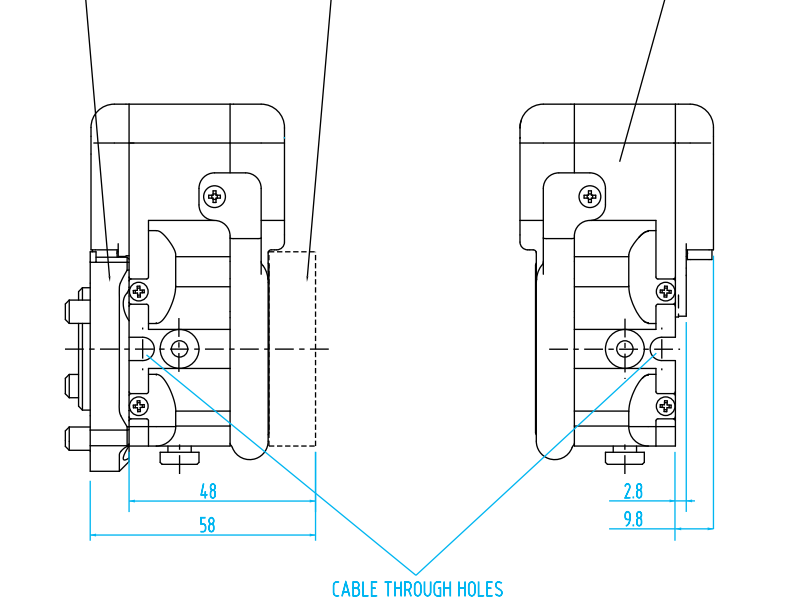
Robot-Side, #8157, #8159



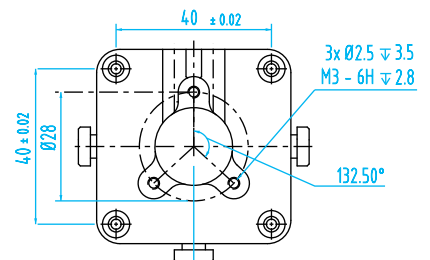
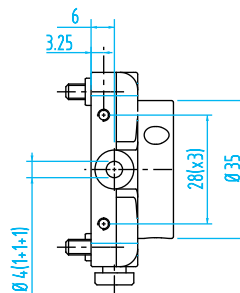
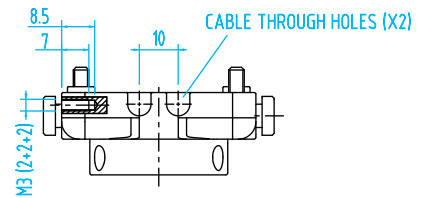
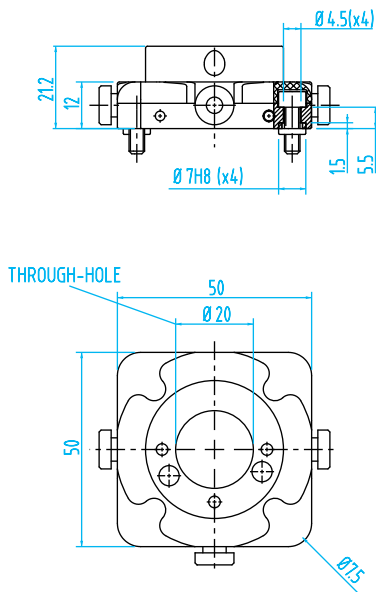
EQC05-K50 – Q# 8161

EQC05-B – Q# 8158

WITHOUT INTERFACE PLATE



EOAT-Side, #8158



- CU
- QC
- VG
- VC
- VA
- SG
- GR
- MT
- AC
- CS
- CC