

Manual Quick Changer – Gimatic QC75



- **Suggested payload: 44 lb (20 kg)**
- Handles both pneumatic and electrical end effectors.
- Four integrated G1/8" pneumatic pass-through ports for streamlined pneumatic routing.
- Locked position sensing available.
- Optional electrical connector provides 16 screw terminals for streamlined wiring.
- ISO 9409-1-50-4-M6 mounting pattern.

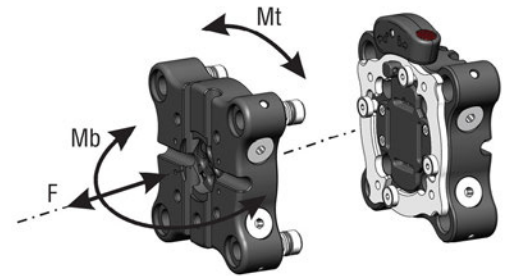
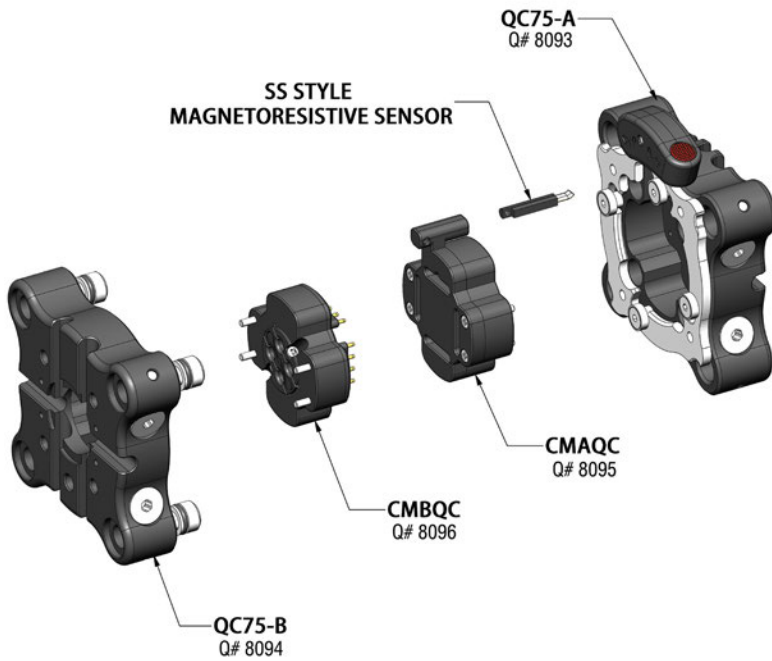
Quick#	Part#	Description	Weight	Price
8093	QC75-A	Robot-Side	300g	\$402.00
8094	QC75-B	EOAT-Side	260g	\$256.00
8095	CMAQC	Robot-Side Electrical Connector	18g	\$36.87
8096	CMBQC	EOAT-Side Electrical Connector	18.5g	\$86.89
8097	CSAQC	Robot-Side Locked Position Sensor Only	15g	\$30.77



Designed for collaborative robots, the QC75 is a manual quick changer that allows for pneumatic and electrical connections to be easily coupled between jobs. Standardize up to 16 electrical contacts and 4 pneumatic lines to have your cobot up and running with minimal downtime.

With the same mounting pattern as the tool flange of your cobot (ISO 9409-1-50-4-M6), you can mount any “Plug & Play” end effector to the QC75-B for a quick and repeatable installation for every job. End effectors can be hard-wired to the QC75-B or plugged to the wrist connector of your Cobot for even faster setup times.

Manual Quick Changer – Gimatic QC75



Specifications for Quick Changer QC75		
Weight	Robot-Side	300g
	EOAT-Side	260g
Max. Suggested Payload	44 lb (20 kg)	
Maximum Air Pressure	6 bar (87psi)	
Air Ports	(4X) G1/8"	
Electrical Connector	Optional	
Safety Loads:		
F	Mt	Mb
224.8 lbs	110.6 ft-lbs.	36.8 ft-lbs.

F= Axial Load Limit Mt= Torque Moment Limit
Mb= Bending Moment Limit

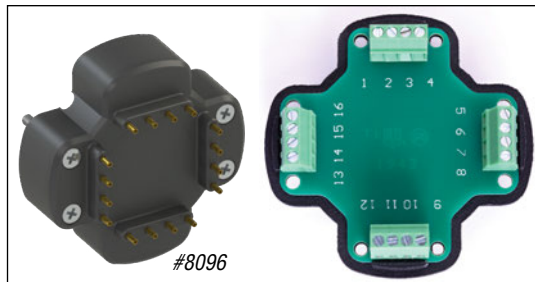
- CU
- QC**
- VG
- VC
- VA
- SG
- GR
- MT
- AC
- CS
- CC

Compatible with custom and stock EOAT from EMI!

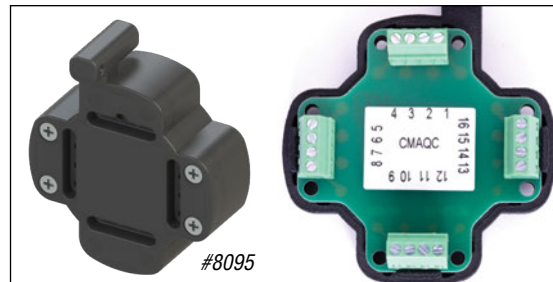


Manual Quick Changer – Gimatic QC75

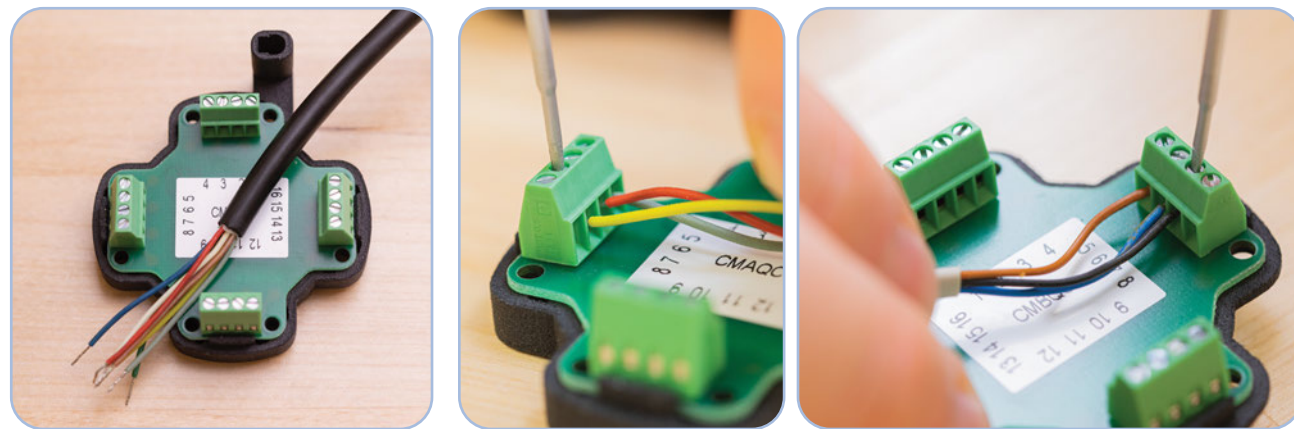
EOAT-Side:



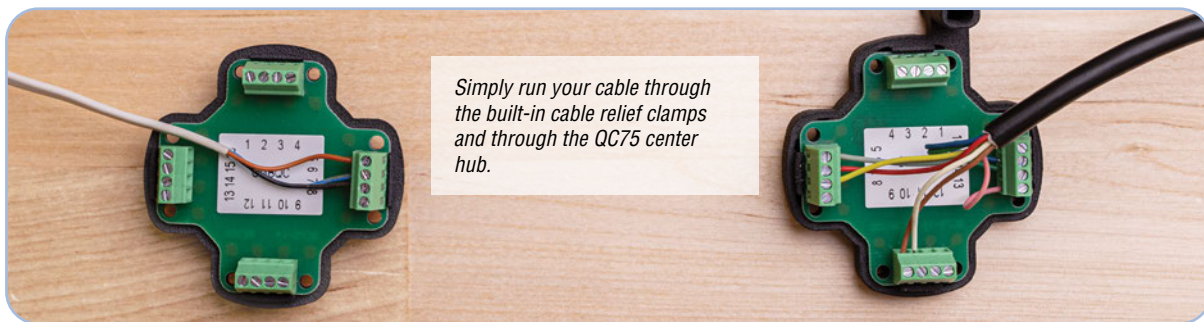
Robot-Side:



QC75 Electrical Connectors make for easy custom wiring of your tool to either your robot wrist I/O or to the controller.



(16x) Screw terminals allow you to standardize on tools with a single sensor or various electric grippers or valves.



Simply run your cable through the built-in cable relief clamps and through the QC75 center hub.

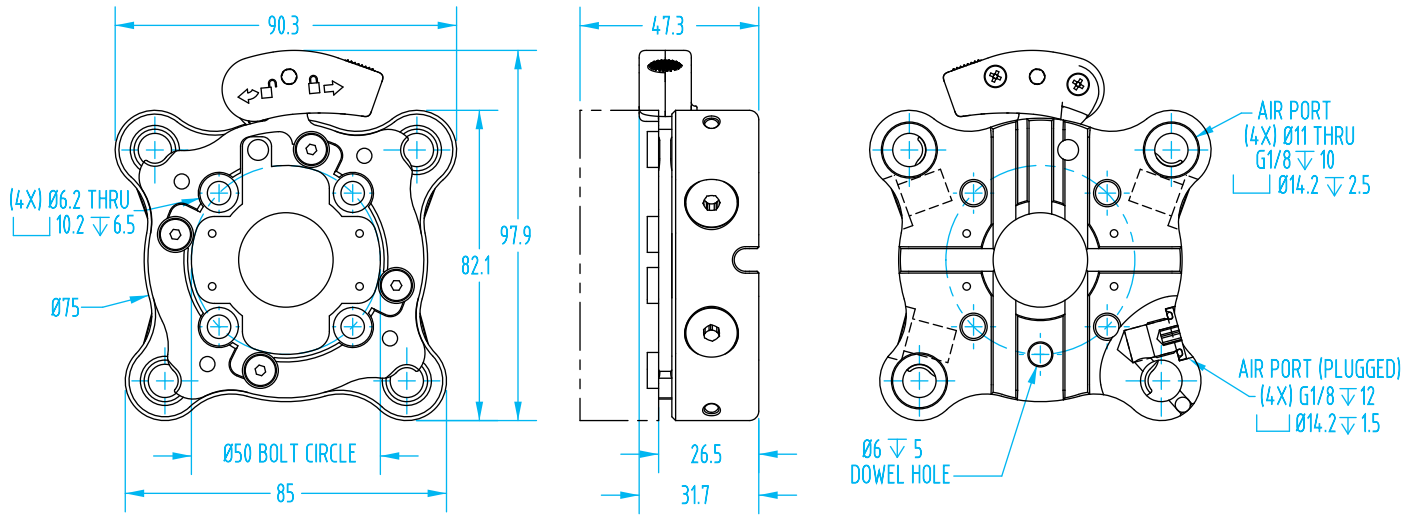


Replace the Electrical Connector back into the QC75 and fasten with the same hardware. Note that cables are meant to run down the backside grooves of the QC75 to avoid any cables from pinching.

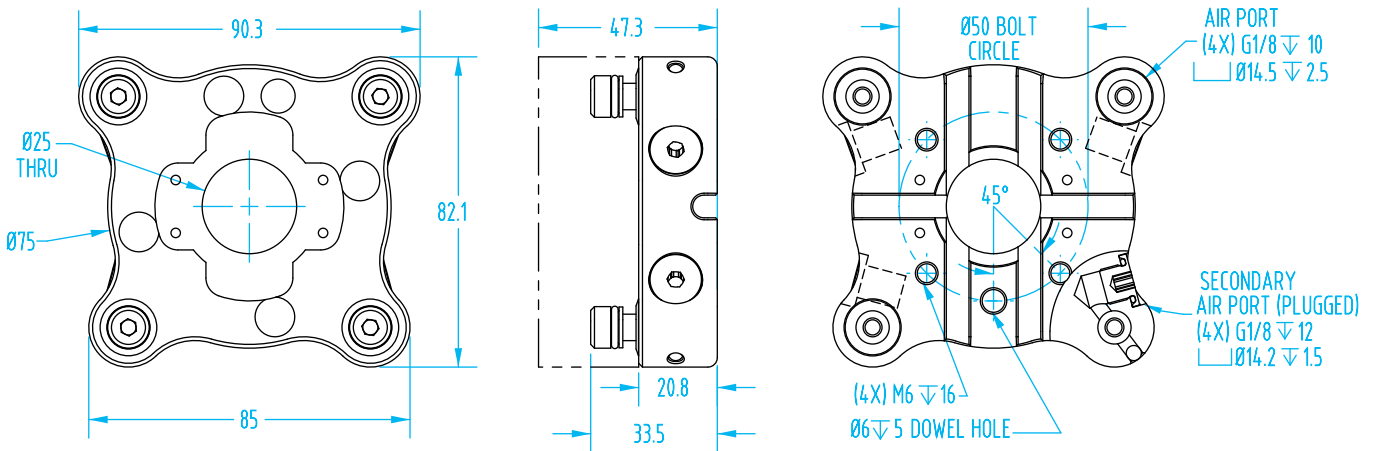
Manual Quick Changer – Gimatic QC75

(Dimensioned drawings shown half scale)

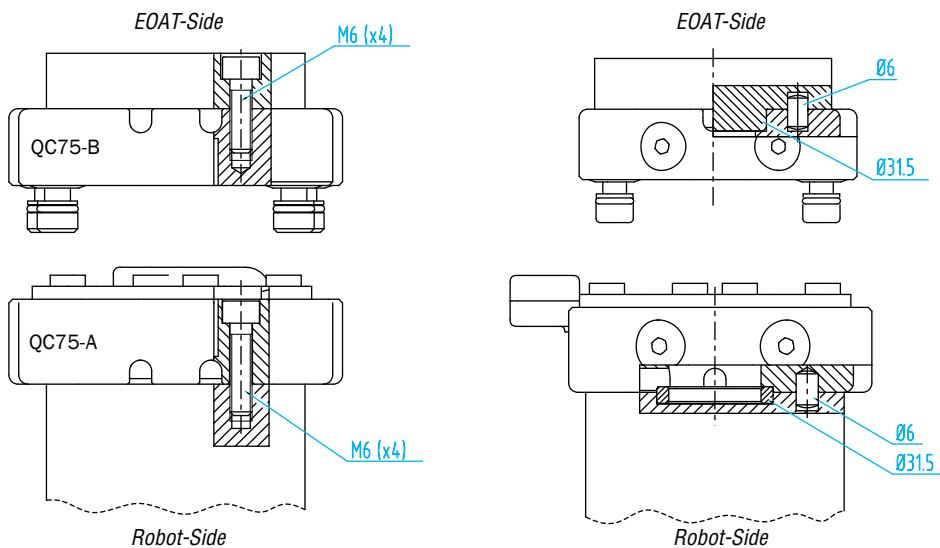
Robot-Side



EOAT-Side



Mounting:



- CU
- QC**
- VG
- VC
- VA
- SG
- GR
- MT
- AC
- CS
- CC