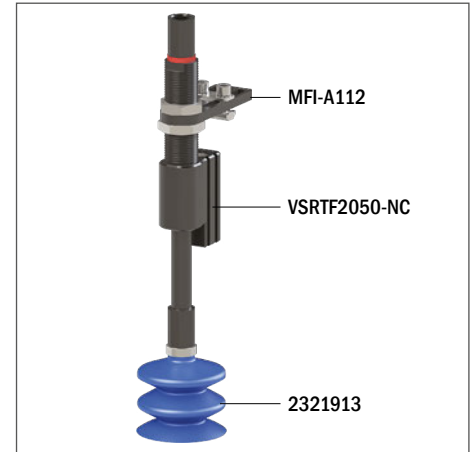


Suction cups / NBR-HNBR

VG.LB53 bellows suction cups in NBR-HNBR

- Suitable for handling plastic parts
- Suitable for objects with flat or slightly curved surfaces
- They enable to compensate for differences in height
- Ideal for leafing through and picking up thin metal sheets, glass sheets, chipboard or pressed wood panels, plastic laminates
- The HNBR version enables to work at high temperatures, whereas silicone or other mixtures may release traces of material. Ideal for applications where contamination of the material must be avoided (PWIS)
- The HNBR compound is robust and wear resistant, suitable for the removal of hot plastic parts from the relevant moulds

Application example



Technical data

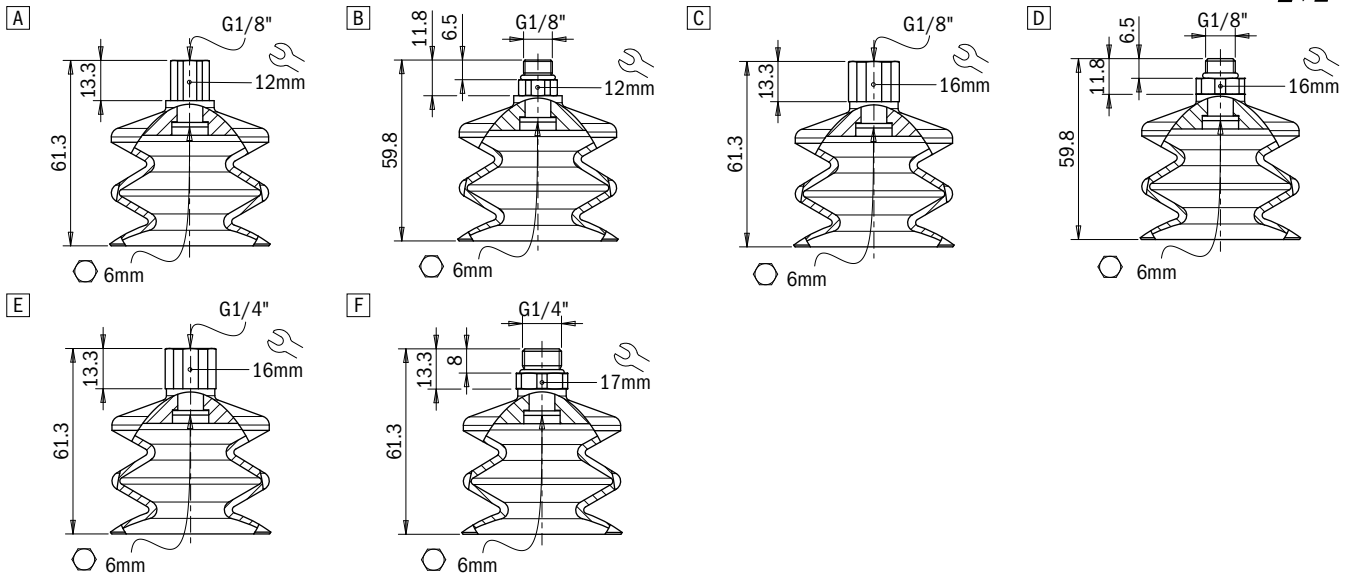
Material	Lifting force [N] perpendicular to the surface, at various vacuum levels			Lifting force [N] parallel to the surface, at various vacuum levels			Volume [cm ³]	Min curve radius [mm]	Max vert. movement [mm]	Suction cup weight [g]
	-20 kPa	-60 kPa	-90 kPa	-20 kPa	-60 kPa	-90 kPa				
NBR 50	40.3	102.8	106.7	–	–	–	37	80	25	31.5
HNBR 60	40.3	102.8	106.7	–	–	–	37	80	25	25.6

Technical features

Material	Color	Hardness	Temperature range
NBR	Black	50 Shore	-40 - +212 °F
HNBR	Blue	60 Shore	-13 - +302 °F

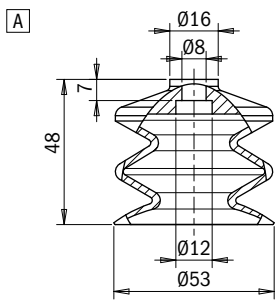
Identification codes

Drawing	Alphanumeric code	Suction cups with fitting	Order code
A	VG.LB53N.50.G18F.E12	VG.LB53 suction cup, NBR, 50 Shore, G1/8" female, 12 mm hex	2321900
B	VG.LB53N.50.G18M.E12	VG.LB53 suction cup, NBR, 50 Shore, G1/8" male, 12 mm hex	2321902
C	VG.LB53N.50.G18F.E16	VG.LB53 suction cup, NBR, 50 Shore, G1/8" female, 16 mm hex	2321903
D	VG.LB53N.50.G18M.E16	VG.LB53 suction cup, NBR, 50 Shore, G1/8" male, 16 mm hex	2321904
E	VG.LB53N.50.G14F.E16	VG.LB53 suction cup, NBR, 50 Shore, G1/4" female, 16 mm hex	2321905
F	VG.LB53N.50.G14M.E17	VG.LB53 suction cup, NBR, 50 Shore, G1/4" male, 17 mm hex	2321906
A	VG.LB53H.60.G18F.E12	VG.LB53 suction cup, HNBR, 60 Shore, G1/8" female, 12 mm hex	2321907
B	VG.LB53H.60.G18M.E12	VG.LB53 suction cup, HNBR, 60 Shore, G1/8" male, 12 mm hex	2321909
C	VG.LB53H.60.G18F.E16	VG.LB53 suction cup, HNBR, 60 Shore, G1/8" female, 16 mm hex	2321910
D	VG.LB53H.60.G18M.E16	VG.LB53 suction cup, HNBR, 60 Shore, G1/8" male, 16 mm hex	2321911
E	VG.LB53H.60.G14F.E16	VG.LB53 suction cup, HNBR, 60 Shore, G1/4" female, 16 mm hex	2321912
F	VG.LB53H.60.G14M.E17	VG.LB53 suction cup, HNBR, 60 Shore, G1/4" male, 17 mm hex	2321913



Identification codes

Drawing	Alphanumeric code	Suction cups	Order code
A	VG.LB53N.50	VG.LB53 suction cup, NBR, 50 Shore	2321901
A	VG.LB53H.60	VG.LB53 suction cup, HNBR, 60 Shore	2321908



Identification codes

Drawing	Alphanumeric code	Fittings	Order code
A	FT.G18F.E12	G1/8" female fitting, 12 mm hex	2321422
B	FT.G18M.E12	G1/8" male fitting, 12 mm hex	2321424
C	FT.G18F.E16	G1/8" female fitting, 16 mm hex	2321426
D	FT.G18M.E16	G1/8" male fitting, 16 mm hex	2321428
E	FT.G14F.E16	G1/4" female fitting, 16 mm hex	2321430
F	FT.G14M.E17	G1/4" male fitting, 17 mm hex	2321432

