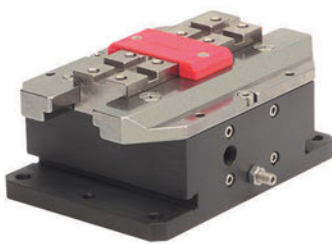
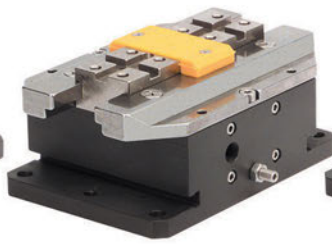


2-jaw parallel self-centering pneumatic gripper (series GM)

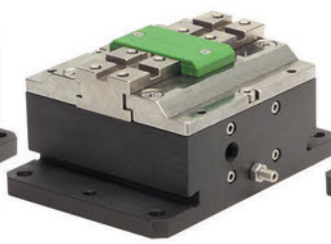
- Double acting.
- The rugged construction lends itself to heavy duty applications for a trouble free long life without maintenance.
- Wide choice of stroke length and gripping force options.
- The gripping force is constant on both directions along the total stroke.
- Flat profile.
- Easy fastening by through holes on the flange.
- Stroke adjustment.
- Optional magnetic sensors.
- FDA-H1 food-grade grease.



GM-0100



GM-0101



GM-0102



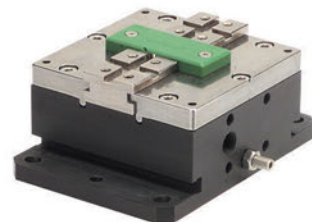
GM-0103



GM-0075



GM-0076



GM-0077



GM-0050



GM-0051



GM-0052



GM-0025



GM-0026



GM-0027



GM-0010



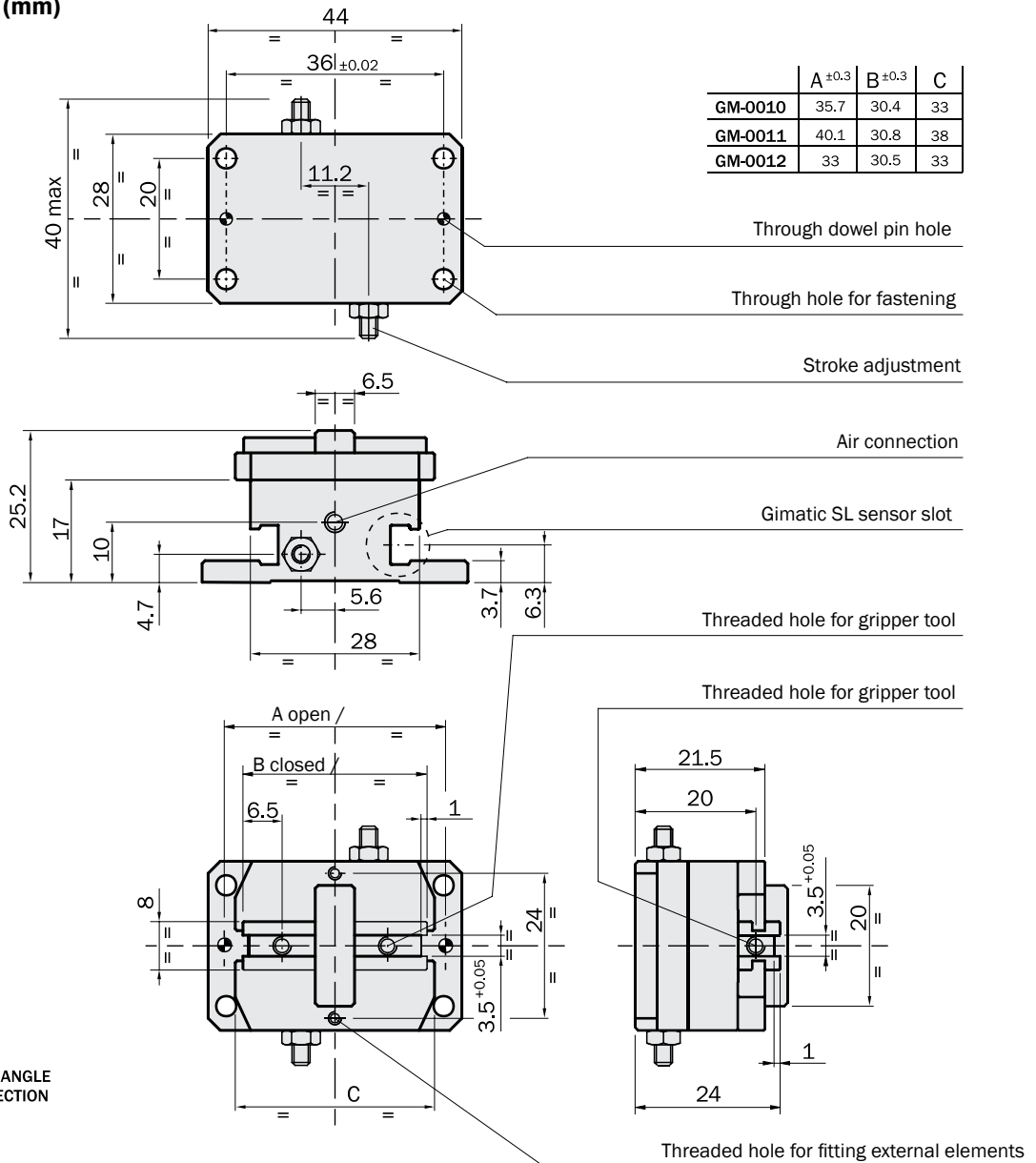
GM-0011



GM-0012

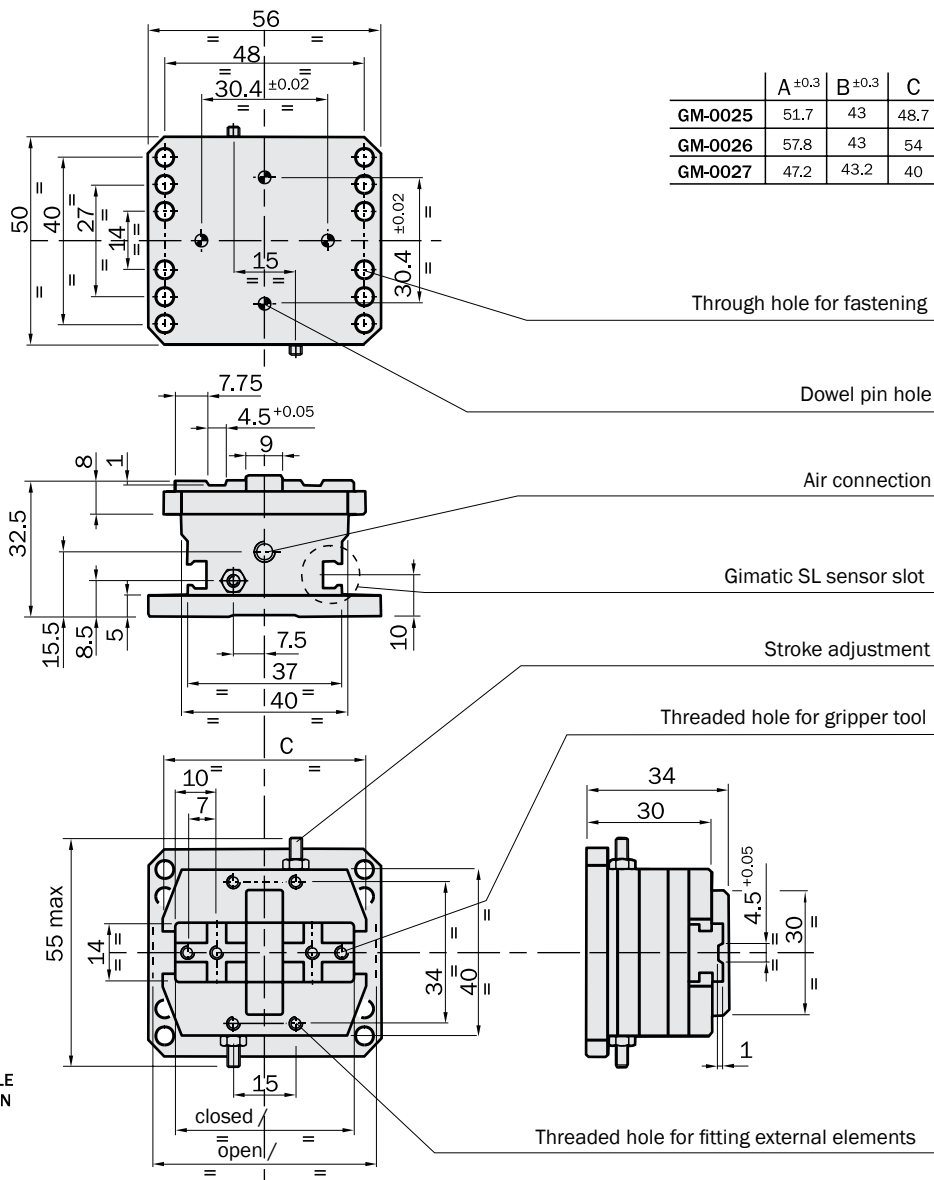
	GM-0010	GM-0011	GM-0012
Medium	Compressed air in compliance with ISO 8573-1:2010 [7:4:4]		
Pressure range	2÷8 bar		
Temperature range	5÷60 °C.		
Gripping force at 6 bar on each jaw	35 N	18 N	70 N
Total gripping force at 6 bar	70 N	36 N	140 N
Total stroke	5.3 mm	9.3 mm	2.5 mm
Maximum working frequency	3 Hz		
Cycle air consumption	1.5 cm ³		
Closing time without load	0.03 s		
Repetition accuracy	0.02 mm		
Weight	70 g	75 g	70 g

Dimensions (mm)



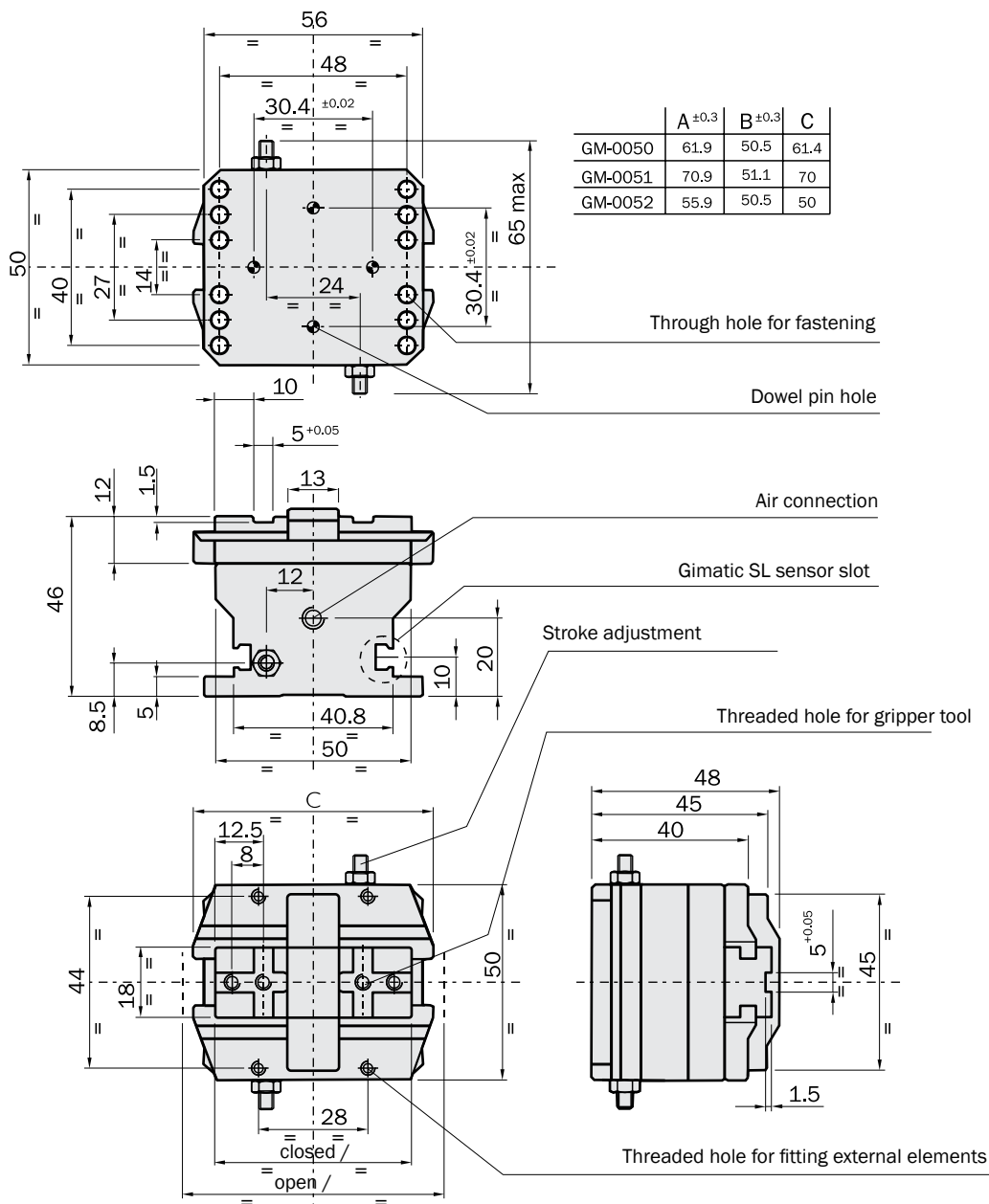
	GM-0025	GM-0026	GM-0027
Medium	Compressed air in compliance with ISO 8573-1:2010 [7:4:4]		
Operating pressure range	2÷8 bar		
Operating temperature range	5÷60 °C.		
Gripping force at 6 bar on each jaw	70 N	40 N	130 N
Total gripping force at 6 bar	140 N	80 N	260 N
Total stroke	8.7 mm	14.8 mm	4 mm
Maximum working frequency	3 Hz		
Cycle air consumption	3.4 cm ³		
Closing time without load	0.05 s		
Repetition accuracy	0.02 mm		
Weight	200 g	210 g	190 g

Dimensions (mm)



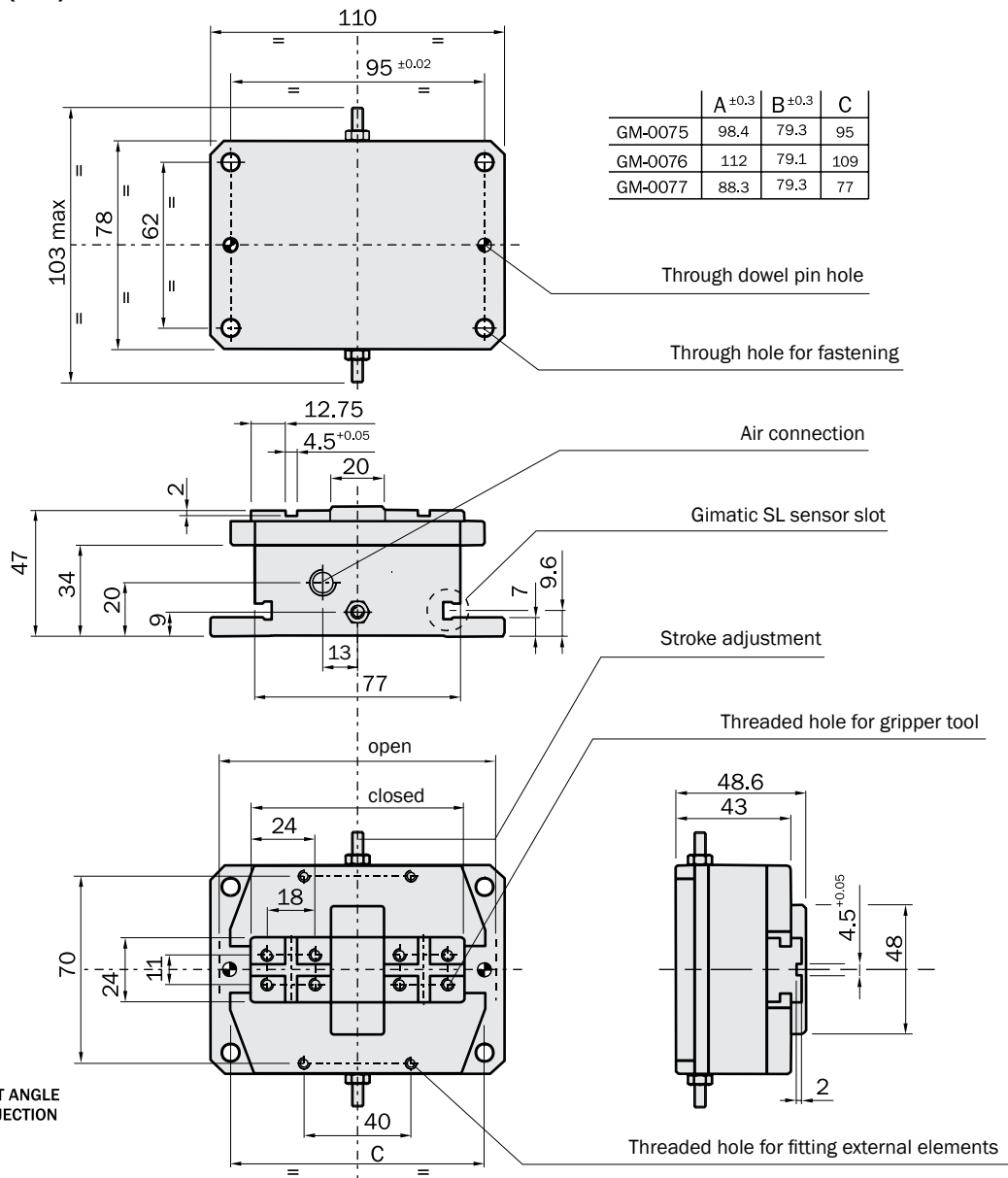
	GM-0050	GM-0051	GM-0052
Medium	Compressed air in compliance with ISO 8573-1:2010 [7:4:4]		
Pressure range	2÷8 bar		
Temperature range	5÷60 °C.		
Gripping force at 6 bar on each jaw	160 N	90 N	300 N
Total gripping force at 6 bar	320 N	180 N	600 N
Total stroke	11.4 mm	19.8 mm	5.4 mm
Maximum working frequency	3 Hz		
Cycle air consumption	12 cm ³		
Closing time without load	0.09 s		
Repetition accuracy	0.02 mm		
Weight	370 g	380 g	350 g

Dimensions (mm)



	GM-0075	GM-0076	GM-0077
Medium	Compressed air in compliance with ISO 8573-1:2010 [7:4:4]		
Pressure range	2÷8 bar		
Temperature range	5÷60 °C.		
Gripping force at 6 bar on each jaw	250 N	160 N	540 N
Total gripping force at 6 bar	500 N	320 N	1080 N
Total stroke	19.1 mm	32.9 mm	9 mm
Maximum working frequency	2 Hz		
Cycle air consumption	34 cm ³		
Closing time without load	0.14 s		
Repetition accuracy	0.02 mm		
Weight	1050 g	1100 g	1000 g

Dimensions (mm)



	GM-0100	GM-0101	GM-0102	GM-0103
Medium	Compressed air in compliance with ISO 8573-1:2010 [7:4:4]			
Pressure range	2÷8 bar			
Temperature range	5÷60 °C.			
Gripping force at 6 bar on each jaw	450 N	210 N	770 N	1200 N
Total gripping force at 6 bar	900 N	420 N	1540 N	2400 N
Total stroke	23.7 mm	41 mm	11 mm	5.8 mm
Maximum working frequency	2 Hz			
Cycle air consumption	61 cm ³			
Closing time without load	0.14 s			
Repetition accuracy	0.02 mm			
Weight	1600 g	1700 g	1600 g	1580 g

Dimensions (mm)

