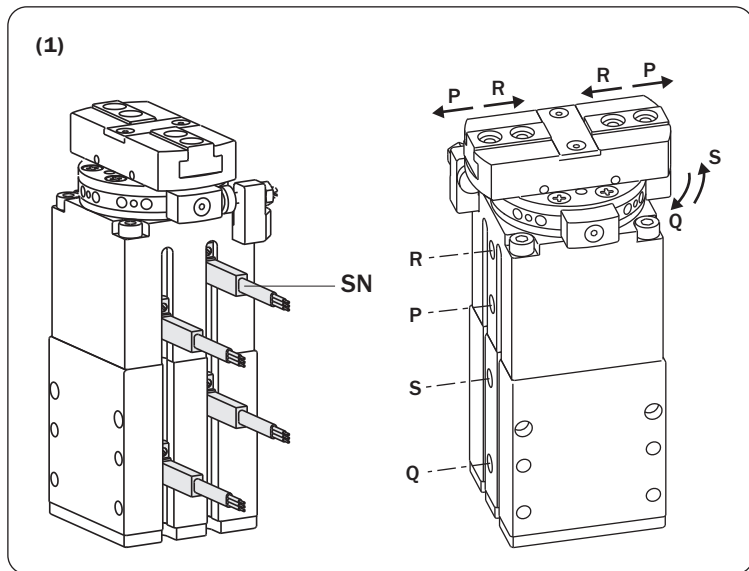


Pinza parallela pneumatica integrata con rotatore

- Adatti per rotazioni di 45°/90°/135°/180°.
- Pinza e rotary attuatore integrati: i quattro sensori ed i quattro tubi non ruotano (1).
- Sensori magnetici opzionali.
- Disponibile su richiesta anche con molla in chiusura (-NC) o in apertura (-NO).

Pneumatic parallel gripper with rotary actuator

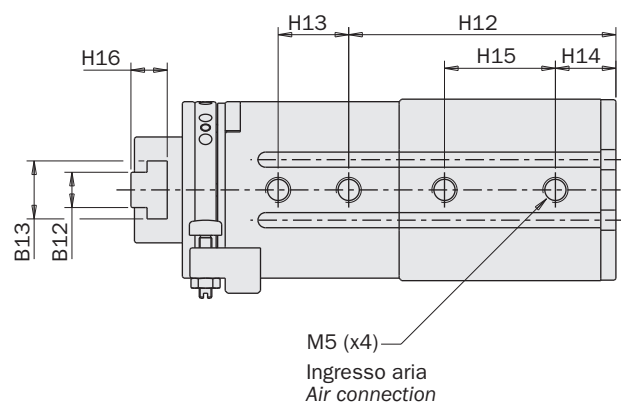
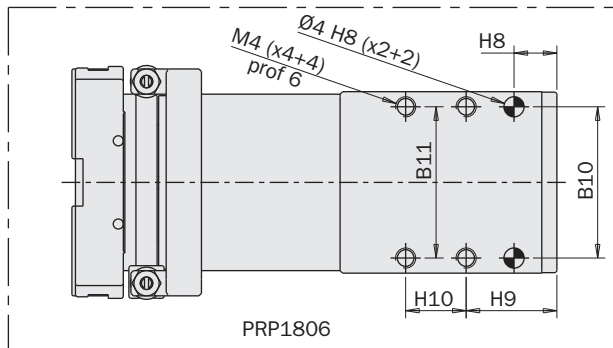
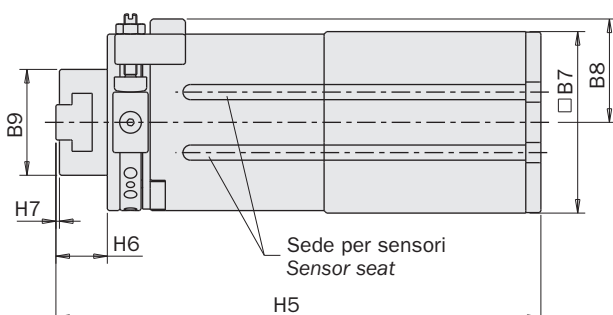
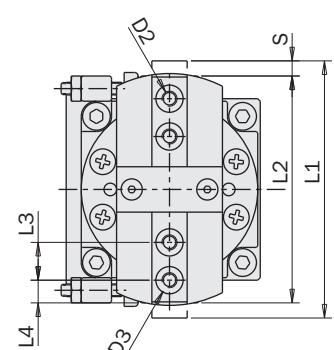
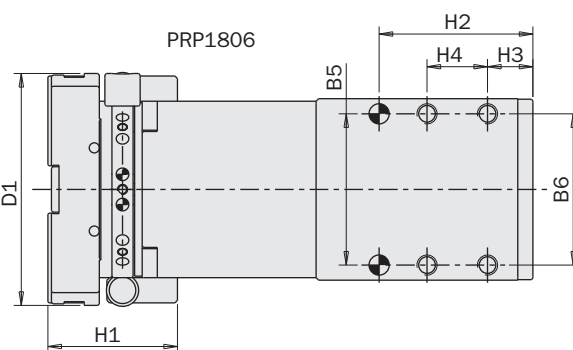
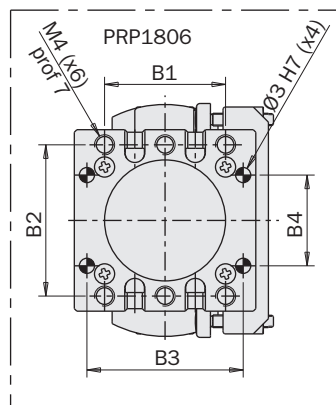
- Suitable for 45°/90°/135°/180° rotation angles.
- Gripper with integrated rotary actuator: the four sensors and the four hoses do not rotate (1).
- Optional magnetic sensors.
- Normally Closed (-NC) or normally open (-NO) option available upon request.



NEW

	PRP1806
Fluido Medium	Aria compressa filtrata, lubrificata / non lubrificata Filtered, lubricated / non lubricated compressed air
Pressione di esercizio Operating pressure	3 ÷ 8 bar
Temperatura di esercizio Operating temperature	5° ÷ 60°C.
Forza di serraggio per griffa in apertura a 6 bar Opening gripping force on each jaw at 6 bar	68 N
Forza di serraggio totale in apertura a 6 bar Total opening gripping force at 6 bar	136 N
Forza di serraggio per griffa in chiusura a 6 bar Closing gripping force on each jaw at 6 bar	60 N
Forza di serraggio totale in chiusura a 6 bar Closing total gripping force at 6 bar	120 N
Corsa totale pinza (±0.3 mm) Gripper total stroke	6 mm
Consumo d'aria per ciclo pinza Air consumption per gripper cycle	3 cm³
Tempo minimo di chiusura / apertura pinza Minimum gripper closing / opening timer	0.02 s
Coppia di rotazione teorica a 6 bar Theoretical torque at 6 bar	85 Ncm
Corsa angolare massima Maximum angular angle	180°
Consumo d'aria per ciclo rotary attuatore Air consumption per rotary actuator cycle	13 cm³
Tempo minimo per rotazione di 180° Minimum time for 180° rotation	0.20 s
Peso Weight	320 g

Dimensioni (mm) / Dimensions (mm)
Dimensioni (mm)



		PRP1806
B1		24
B2		30
B3	±0.02	31
B4	±0.02	18
B5	±0.02	30
B6		30
B7		36
B8		20.5
B9		21
B10	±0.02	30
B11		30
B12		7
B13		11.5
D1		Ø46
D2		M3 P4.7
D3	H8	Ø5
H1		25.7
H2	±0.05	30.5
H3		9
H4		12
H5		96
H6		10.2
H7		0.7
H8	±0.05	8.5
H9		18
H10		12
H11	±0.02	-
H12		53
H13		14
H14		12
H15		22
H16		7.2
L1		51
L2		45
L3	±0.02	7.5
L4	±0.05	4.5

Unità Rotanti
Rotary Units

Cambia Utensile
Quick Changer

Profili e Staffe
Profiles and Brackets

Pinze
Grippers

Attuatori Lineari
Linear Actuators

Sospensioni
Suspensions

Taglierini
Nippers

Kit-Robot
Robot Kit

Accessori Opzionali
Options

Sensori
Sensors