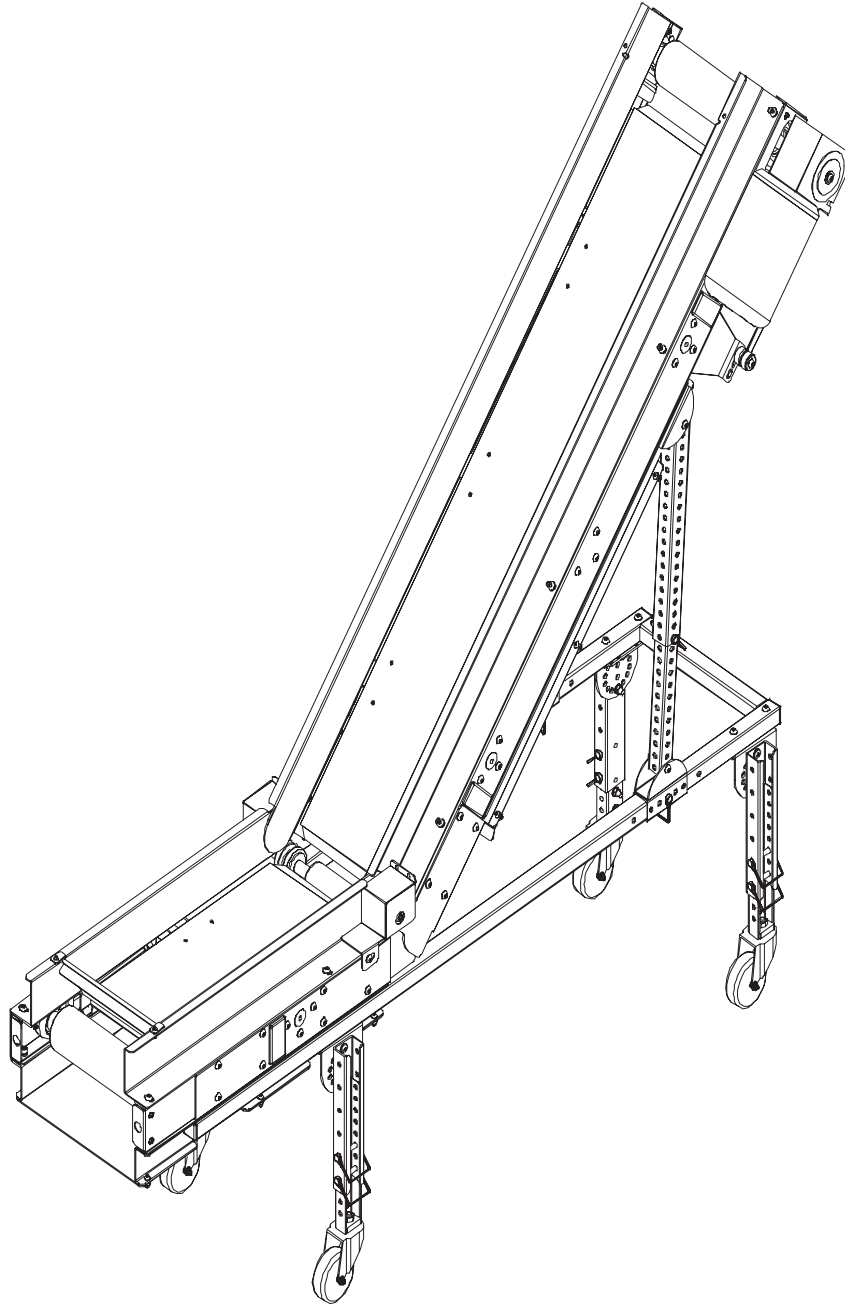


SECTION VIII. PARTS LISTS AND 3-D DRAWINGS

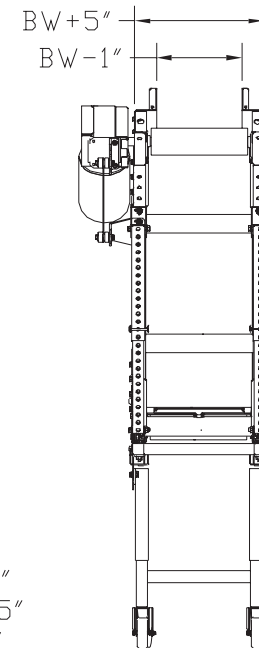
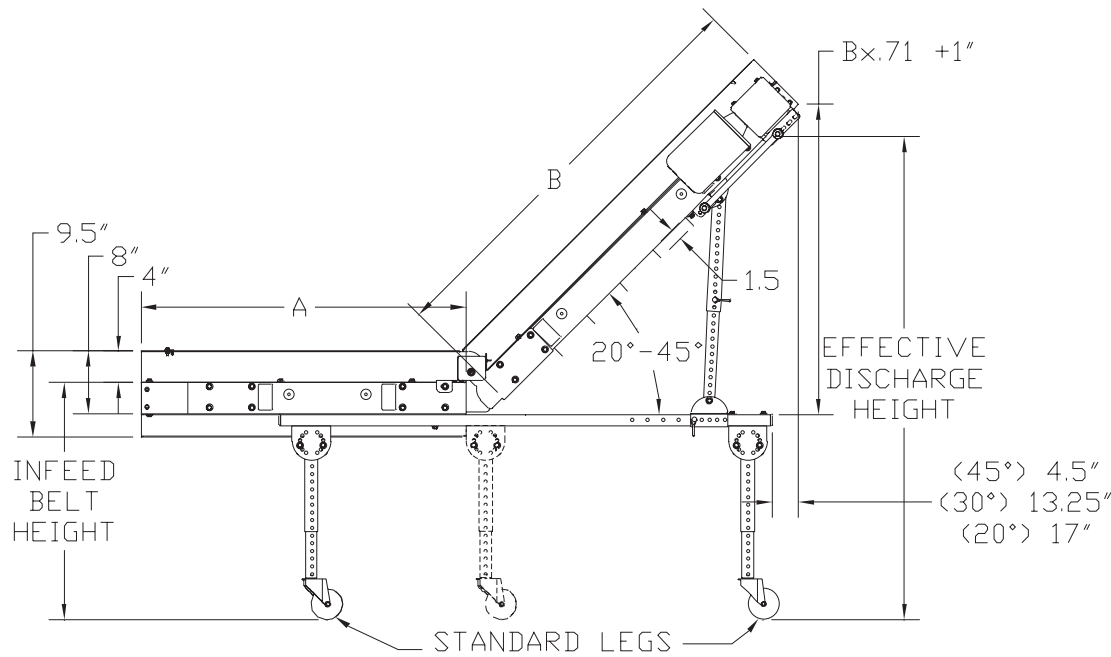
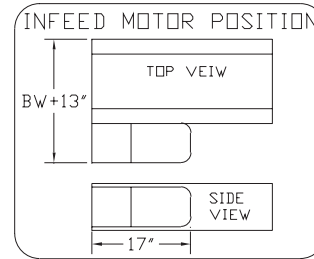
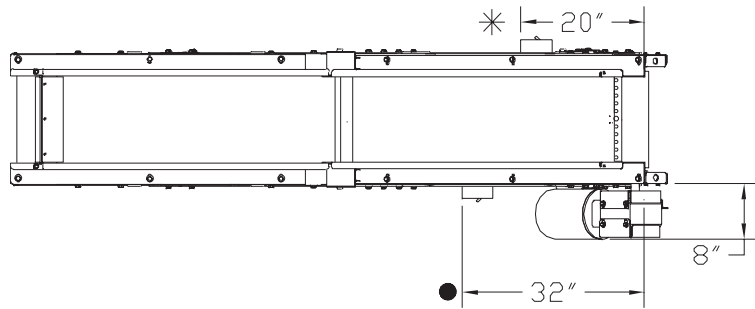
ADK CONVEYOR - ASSEMBLED VIEW

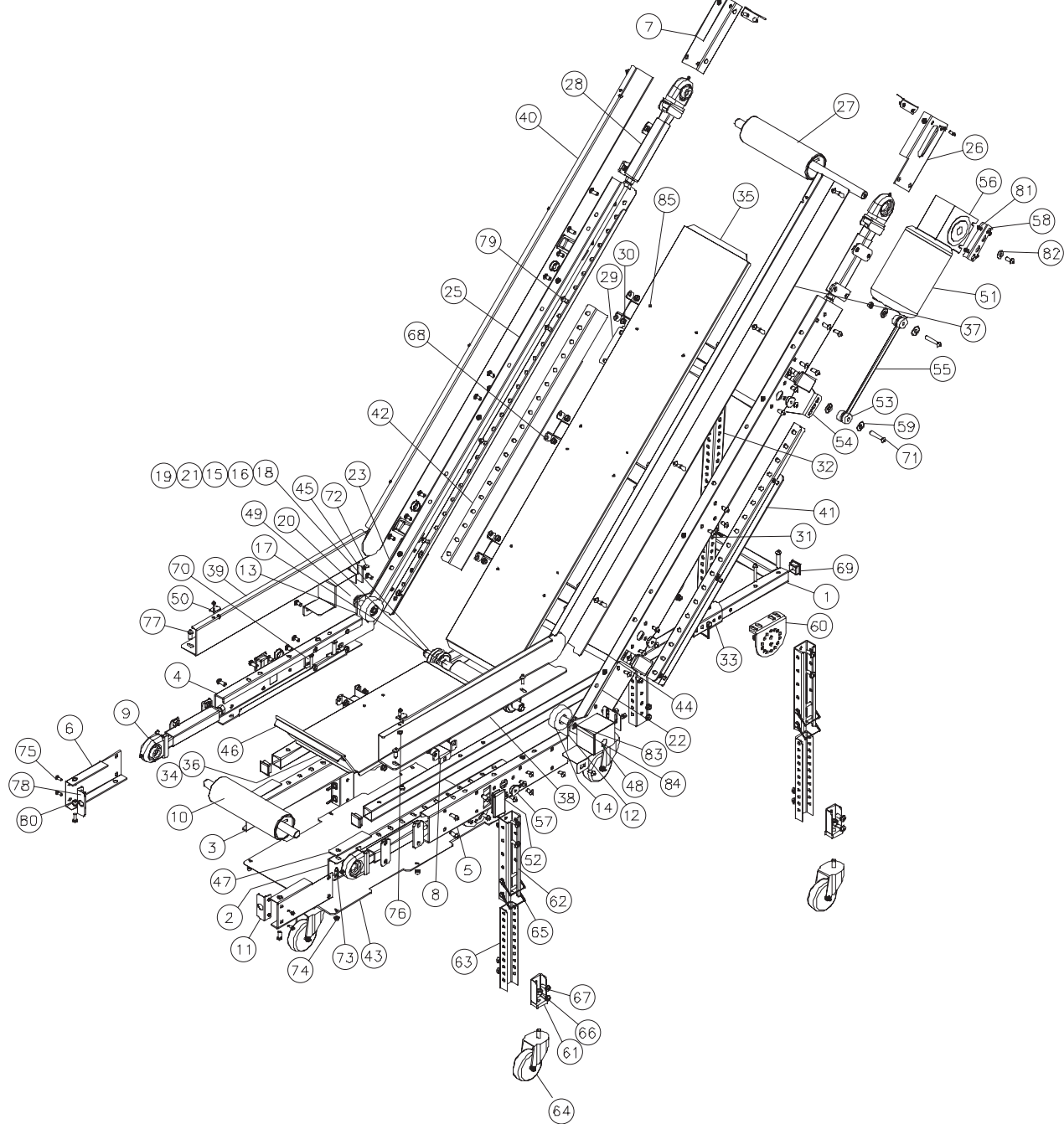


SECTION VIII. PARTS LISTS AND 3-D DRAWINGS

ADK CONVEYOR - CATALOG VIEW

NOTE: A & B DIMENSION ARE IN 1' INCREMENTS +6"
 DRIVE LOCATION FOR 24' & 30' MODELS IS ON INFEED END
 DRIVE LOCATION FOR 9', 12', & 18' MODELS IS ON DISCHARGE
 11" MIN. INFEED BELT HEIGHT WITH STANDARD LEGS & CASTORS
 ● STANDARD STARTER POSITION (SPECIFY IF OTHER LOCATION)
 * STARTER POSITION FOR 8' OR SHORTER CONVEYORS
 BW=BELT WIDTH



SECTION VIII. PARTS LISTS AND 3-D DRAWINGS**ADK CONVEYOR - EXPLODED VIEW**

ADK CONVEYOR PARTS LIST

ITEM	QTY	PART DESCRIPTION	EMI P/N
1	1	SUB-BASE	See BOM
2	1	BELT GUARD	See BOM
3	1	BELT GUARD	See BOM
4	1	FRAME	See BOM
5	1	FRAME	See BOM
6	1	PULLEY GUARD	4M-08-1-L
7	2	PULLEY GUARD	4M-08-1-R
8	4	CROSS BRACE	4M-41-1-W
9	2	TAKE-UP BEARING ASS'Y	2M-232-1
10	1	TAIL PULLEY	4M-224-1-W
11	4	BEARING COVER	4M-67-1
12	1	INF LH TRANSFER CONNECTING PLATE	4M-227-1
13	1	INF RH TRANSFER CONNECTING PLATE	4M-227-2
14	2	IDLER WHEEL	2M-15-1
15	2	ROLLER BEARING	CP-7037
16	1	RETURN IDLER ROLLER SHAFT	4M-21-3-W
17	1	ROLLER	2M-40-2-W
18	2	IDLER ROLLER SPACER	See BOM
19	2	IDLER ROLLER SPACER	See BOM
20	2	IDLER FLANGE	4M-15-1
21	4	3/4" WIDE FLAT WASHER	CP-667
22	1	DISCH LH TRANSFER CONNECTING PLATE	4M-27-6
23	1	DISCH RH TRANSFER CONNECTING PLATE	4M-27-7
24	20	3/8" FLAT WASHER	CP-3342
25	2	FRAME	See BOM
26	1	PULLEY GUARD	4M-08-2-L
27	1	DRIVE PULLEY	4M-210-1-W
28	2	TAKE-UP BEARING ASS'Y	2M-232-4
29	2	LEG SPACER	2M-31-11
30	2	LEG MOUNTING BRACKET	4M-14-23
31	2	LEG	See BOM
32	2	LEG EXTENSION	See BOM
33	2	SLIDE	4M-229-5
34	4	SLIDE TRAY SUPPORT	See BOM
35	1	SLIDE TRAY	See BOM
36	1	SLIDE TRAY	See BOM
37	1	SIDE RAIL	See BOM
38	1	SIDE RAIL	See BOM
39	1	SIDE RAIL	See BOM
40	1	SIDE RAIL	See BOM
41	1	LH BOTTOM TRAY SIDE	See BOM
42	1	RH BOTTOM TRAY SIDE	See BOM
43	1	BOTTOM SLIDE TRAY	See BOM

ITEM	QTY	PART DESCRIPTION	EMI P/N
44	1	BOTTOM TRAY	See BOM
45	2	IDLER GUARD	4M-08-6
46	1	FLAPPER	See BOM
47	2	TAIL SPACER	4M-31-20
48	1	IDLER GUARD ASS'Y	4M-208-1
49	1	IDLER GUARD ASS'Y	4M-208-2
50	2	FLAPPER CLIP	2E-01-10
51	1	MOTOR	See BOM
52	6	PLUG	CP-1581
53	2	MOUNT	CP-3178
54	1	REACTION ROD BRACKET	2M-14-29
55	1	REACTION ROD	2M-38-1
56	1	GEARBOX	See BOM
57	6	PLUG	EL-395
58	1	REACTION ROD BRACKET	2M-14-28
59	4	3/8" FLAT FENDER WASHER	CP-671-B
60	4	LEG MOUNTING BRACKET	2M-14-16
61	4	LEG ADAPTER	4M-236-15
62	4	LEG EXTENSION	See BOM
63	4	LEG	See BOM
64	4	CASTOR	CP-1237
65	12	CLIP PIN	CP-3301
66	4	1/2"-13 HEX NUT	CP-508-B
67	18	3/8"-16x1" HEX SOCKET BUTTON HEAD CAP SCREW	CP-3325
68	86	3/8"-16 HEX NUT	CP-3299
69	4	PLUG	CP-2321
70	4	3/8"-16x2-1/2" HEX SOCKET BUTTON HEAD CAP SCREW	CP-3296
71	12	3/8"-16x2-1/4" HEX SOCKET BUTTON HEAD CAP SCREW	CP-3353
72	4	1/4"-20x1/2" THUMB SCREW	CP-451-B
73	12	1/4"-20x3/4" HEX SOCKET BUTTON HEAD CAP SCREW	CP-3291
74	12	1/4"-20 HEX NUT	CP-3297
75	12	1/4"-20x3/4" HEX SOCKET BUTTON HEAD CAP SCREW	CP-3291
76	2	1/4"-20 HEX NUT	CP-3297
77	31	3/8"-16x1" HEX SOCKET BUTTON HEAD CAP SCREW	CP-3325
78	8	1/4"-20 NUTSERT	CP-2132
79	52	3/8"-16x3/4" HEX SOCKET BUTTON HEAD CAP SCREW	CP-2890
80	14	3/8"-16 NUTSERT	CP-2856
81	2	1/4"-20 HEX NUT	CP-3297
82	1	3/8" FENDER WASHER	CP-671-B
83	2	1/2" WASHER	CP-658
84	2	1/2"x 1" HEX SOCKET HEAD SHOULDER SCREW	CP-3051
85	24	5/32"x7/16" COUNTERSUNK HEAD RIVET	CP-2052
86	2	SNAP RING	CP-7310
87	2	SNAP RING	CP-7035