

## Merit and Signature Line Accumulation Hoppers



A Model RMC-18-10-20 conveyor (set at a 45° angle) with optional castors and a 5 cubic foot capacity stainless steel infeed hopper.

EMI offers a complete line of Standard Accumulation Hoppers. EMI accumulation hoppers are available in a wide selection of capacities, sized to fit belt conveyor widths from 6" through 48". To assure the correct selection, a sufficient sample of molded parts should be provided to EMI for evaluation. Accumulation hoppers can be supplied in stainless steel or carbon steel (painted on the outside only). Custom hoppers can also be provided.



A Model RMC-18-10-20 conveyor (set at a 30° angle) with optional castors and a 20 cubic foot capacity stainless steel infeed hopper.

### Accumulation Hopper Selection:

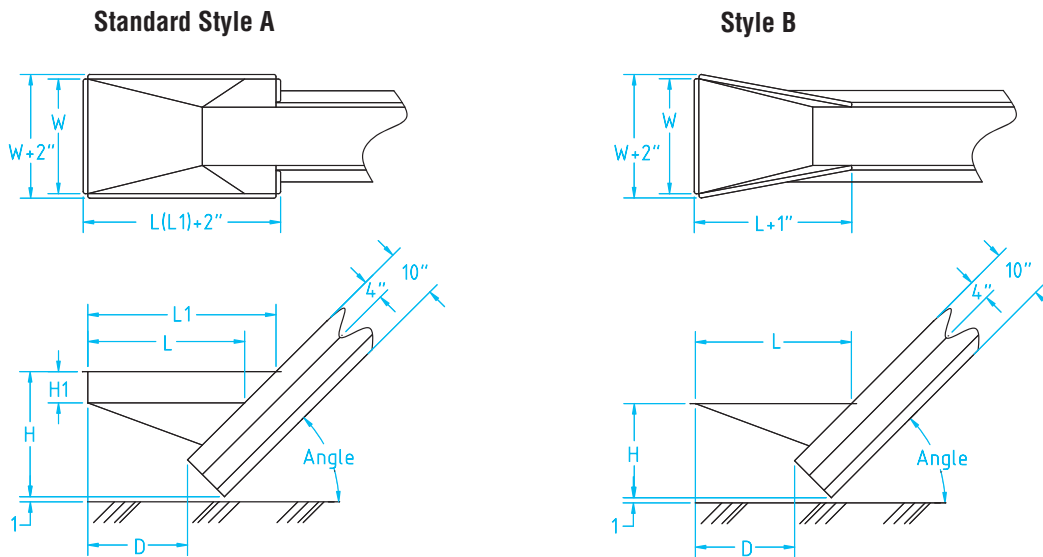
Based on the belt width and angle of the conveyor selected, part size and flowability, determine the amount of inventory required in the hopper, (which can be moved away before the hopper is filled). Samples and discussions with EMI sales people can help in determining the proper hopper model.

See next page for sizes and dimensions.

Accumulation Hopper Capacities (cubic feet)										
	Conveyor Belt Widths									Capacities shown are for the following conveyor angles: 20°, 25°, 30°, 35°, 40° & 45°.
	6"	9"	12"	18"	24"	30"	36"	42"	48"	
H-8 Hopper	.8	1.0	1.2	1.6	2.0	2.4	2.8	3.2	3.6	
H-9 Hopper	1.7	2.0	2.4	3.1	3.8	4.5	5.2	5.9	6.6	
H-10 Hopper	2.8	3.4	4.1	5.4	6.7	8.0	9.3	10.6	11.9	
H-11 Hopper	5.2	6.2	7.2	9.2	11.2	13.2	15.0	17.2	19.2	
H-12 Hopper	8.4	10.1	11.8	15.2	18.6	22.0	25.4	28.8	32.2	
H-13 Hopper	11.8	13.9	16.1	20.4	24.7	29.0	33.3	37.6	41.9	

NOTE: For Style "A" hoppers only. Call 216-535-4848 for more hopper capacities.

## Accumulation Hoppers – for Extruded Aluminum (EA), Signature and Merit Line Conveyors



### 4" FRAME CONVEYORS

DIMENSIONS FOR 20° HOPPER						
Style	Option No.	D	H	H1	L	L1
A	H8-WIDTH-20	8.6	18	0	32	0
B	H8B-WIDTH-20	8.6	18	0	32	0
A	H9-WIDTH-20	5.4	22	0	40	0
B	H9B-WIDTH-20	5.4	22	0	40	0
A	H10-WIDTH-20	6	25	3	0	49
B	H10B-WIDTH-20	6	25	0	49	0
A	H11-WIDTH-20	3.4	30	7.5	0	60
B	H-11B-WIDTH-20	3.4	30	0	60	0
A	H12-WIDTH-20	9.4	34	12	0	77
B	H12B-WIDTH-20	9.4	34	0	77	0
A	H13-WIDTH-20	7.4	38	12	0	86
B	H13B-WIDTH-20	7.4	38	0	86	0

DIMENSIONS FOR 25° HOPPER						
Style	Option No.	D	H	H1	L	L1
A	H8-WIDTH-25	12.7	18	0	32	0
B	H8B-WIDTH-25	12.7	18	0	32	0
A	H9-WIDTH-25	12.2	22	0	40	0
B	H9B-WIDTH-25	12.2	22	0	40	0
A	H10-WIDTH-25	12.7	25	3	0	47
B	H10B-WIDTH-25	12.7	25	0	47	0
A	H11-WIDTH-25	13	30	8	0	58
B	H-11B-WIDTH-25	13	30	0	58	0
A	H12-WIDTH-25	8	38	12	0	70
B	H12B-WIDTH-25	8	38	0	70	0
A	H13-WIDTH-25	15.7	39	12	0	80
B	H13B-WIDTH-25	15.7	39	0	80	0

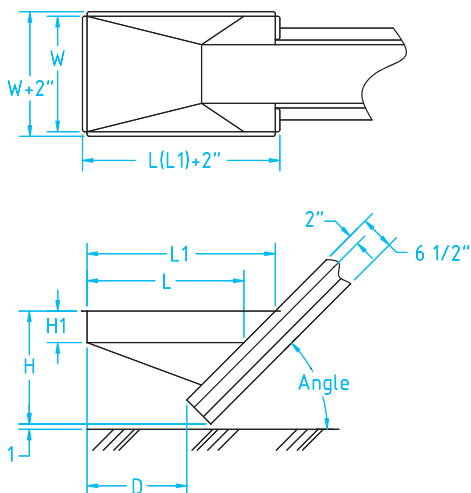
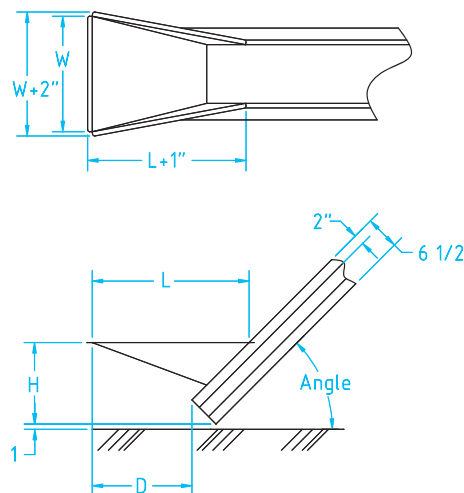
DIMENSIONS FOR 30° HOPPER						
Style	Option No.	D	H	H1	L	L1
A	H8-WIDTH-30	15.7	18	0	32	0
B	H8B-WIDTH-30	15.7	18	0	32	0
A	H9-WIDTH-30	3.6	25	0	32	0
B	H9B-WIDTH-30	3.6	25	0	32	0
A	H10-WIDTH-30	2.7	29	3.5	0	38
B	H10B-WIDTH-30	2.7	29	0	38	0
A	H11-WIDTH-30	3.4	35	9.5	0	49
B	H-11B-WIDTH-30	3.4	35	0	49	0
A	H12-WIDTH-30	13.4	39	10	0	66
B	H12B-WIDTH-30	13.4	39	0	66	0
A	H13-WIDTH-30	13.7	44	12	0	75
B	H13B-WIDTH-30	13.7	44	0	75	0

DIMENSIONS FOR 35° HOPPER						
Style	Option No.	D	H	H1	L	L1
A	H8-WIDTH-35	18	18	0	32	0
B	H8B-WIDTH-35	18	18	0	32	0
A	H9-WIDTH-35	4.5	26	0	30	0
B	H9B-WIDTH-35	4.5	26	0	30	0
A	H10-WIDTH-35	4.7	30	4	0	36
B	H10B-WIDTH-35	4.7	30	0	36	0
A	H11-WIDTH-35	5.2	36	10	0	45
B	H-11B-WIDTH-35	5.2	36	0	45	0
A	H12-WIDTH-35	5.4	45	6	0	58
B	H12B-WIDTH-35	5.4	45	0	58	0
A	H13-WIDTH-35	5.2	50	11	0	65
B	H13B-WIDTH-35	5.2	50	0	65	0

DIMENSIONS FOR 40° HOPPER						
Style	Option No.	D	H	H1	L	L1
A	H8-WIDTH-40	17.6	18	0	30	0
B	H8B-WIDTH-40	17.6	18	0	30	0
A	H9-WIDTH-40	8	26	0	30	0
B	H9B-WIDTH-40	8	26	0	30	0
A	H10-WIDTH-40	8.4	30	4	0	35
B	H10B-WIDTH-40	8.4	30	0	35	0
A	H11-WIDTH-40	8	36	10	0	42
B	H-11B-WIDTH-40	8	36	0	42	0
A	H12-WIDTH-40	7	48	6	0	55
B	H12B-WIDTH-40	7	48	0	55	0
A	H13-WIDTH-40	7	53	11	0	61
B	H13B-WIDTH-40	7	53	0	61	0

DIMENSIONS FOR 45° HOPPER						
Style	Option No.	D	H	H1	L	L1
A	H8-WIDTH-45	19	18	0	30	0
B	H8B-WIDTH-45	19	18	0	30	0
A	H9-WIDTH-45	11	26	0	30	0
B	H9B-WIDTH-45	11	26	0	30	0
A	H10-WIDTH-45	11	30	4	0	34
B	H10B-WIDTH-45	11	30	0	34	0
A	H11-WIDTH-45	11	37	10.5	0	41
B	H-11B-WIDTH-45	11	37	0	41	0
A	H12-WIDTH-45	13	48	6	0	54
B	H12B-WIDTH-45	13	48	0	54	0
A	H13-WIDTH-45	13	53	11	0	59
B	H13B-WIDTH-45	13	53	0	59	0

## Accumulation Hoppers – for Trim Line Conveyors

**Standard Style A**

**Style B**


### 2 1/2" FRAME TRIM LINE CONVEYORS

**DIMENSIONS FOR 20° HOPPER**

Style	Option No.	D	H	H1	L	L1
A	H8-WIDTH-20	8.6	14.7	0	32	0
B	H8B-WIDTH-20	8.6	14.7	0	32	0
A	H9-WIDTH-20	5.4	18.7	0	40	0
B	H9B-WIDTH-20	5.4	18.7	0	40	0
A	H10-WIDTH-20	6	21.7	3	0	49
B	H10B-WIDTH-20	6	21.7	3	49	0
A	H11-WIDTH-20	3.4	26.7	7.5	0	60
B	H-11B-WIDTH-20	3.4	26.7	0	60	0
A	H12-WIDTH-20	9.4	30.7	12	0	77
B	H12B-WIDTH-20	9.4	30.7	0	77	0
A	H13-WIDTH-20	7.4	34.7	12	0	86
B	H13B-WIDTH-20	7.4	34.7	0	86	0

**DIMENSIONS FOR 25° HOPPER**

Style	Option No.	D	H	H1	L	L1
A	H8-WIDTH-25	12.7	14.8	0	32	0
B	H8B-WIDTH-25	12.7	14.8	0	32	0
A	H9-WIDTH-25	12.2	18.8	0	40	0
B	H9B-WIDTH-25	12.2	18.8	0	40	0
A	H10-WIDTH-25	12.7	21.8	3	0	47
B	H10B-WIDTH-25	12.7	21.8	0	47	0
A	H11-WIDTH-25	13	26.8	8	0	58
B	H-11B-WIDTH-25	13	26.8	0	58	0
A	H12-WIDTH-25	8	34.8	12	0	70
B	H12B-WIDTH-25	8	34.8	0	70	0
A	H13-WIDTH-25	15.7	35.8	12	0	80
B	H13B-WIDTH-25	15.7	35.8	0	80	0

**DIMENSIONS FOR 30° HOPPER**

Style	Option No.	D	H	H1	L	L1
A	H8-WIDTH-30	15.7	15	0	32	0
B	H8B-WIDTH-30	15.7	15	0	32	0
A	H9-WIDTH-30	3.6	22	0	32	0
B	H9B-WIDTH-30	3.6	22	0	32	0
A	H10-WIDTH-30	2.7	26	3.5	0	38
B	H10B-WIDTH-30	2.7	26	0	38	0
A	H11-WIDTH-30	3.4	32	9.5	0	49
B	H-11B-WIDTH-30	3.4	32	0	49	0
A	H12-WIDTH-30	13.4	36	10	0	66
B	H12B-WIDTH-30	13.4	36	0	66	0
A	H13-WIDTH-30	13.7	41	12	0	75
B	H13B-WIDTH-30	13.7	41	0	75	0

**DIMENSIONS FOR 35° HOPPER**

Style	Option No.	D	H	H1	L	L1
A	H8-WIDTH-35	18	15.1	0	32	0
B	H8B-WIDTH-35	18	15.1	0	32	0
A	H9-WIDTH-35	4.5	23.1	0	30	0
B	H9B-WIDTH-35	4.5	23.1	0	30	0
A	H10-WIDTH-35	4.7	27.1	4	0	36
B	H10B-WIDTH-35	4.7	27.1	0	36	0
A	H11-WIDTH-35	5.2	33.1	10	0	45
B	H-11B-WIDTH-35	5.2	33.1	0	45	0
A	H12-WIDTH-35	5.4	42.1	6	0	58
B	H12B-WIDTH-35	5.4	42.1	0	58	0
A	H13-WIDTH-35	5.2	47.1	11	0	65
B	H13B-WIDTH-35	5.2	47.1	0	65	0

**DIMENSIONS FOR 40° HOPPER**

Style	Option No.	D	H	H1	L	L1
A	H8-WIDTH-40	17.6	15.3	0	30	0
B	H8B-WIDTH-40	17.6	15.3	0	30	0
A	H9-WIDTH-40	8	23.3	0	30	0
B	H9B-WIDTH-40	8	23.3	0	30	0
A	H10-WIDTH-40	8.4	27.3	4	0	35
B	H10B-WIDTH-40	8.4	27.3	0	35	0
A	H11-WIDTH-40	8	33.3	10	0	42
B	H-11B-WIDTH-40	8	33.3	0	42	0
A	H12-WIDTH-40	7	45.3	6	0	55
B	H12B-WIDTH-40	7	45.3	0	55	0
A	H13-WIDTH-40	7	50.3	11	0	61
B	H13B-WIDTH-40	7	50.3	0	61	0

**DIMENSIONS FOR 45° HOPPER**

Style	Option No.	D	H	H1	L	L1
A	H8-WIDTH-45	19	18	0	30	0
B	H8B-WIDTH-45	19	18	0	30	0
A	H9-WIDTH-45	11	26	0	30	0
B	H9B-WIDTH-45	11	26	0	30	0
A	H10-WIDTH-45	11	30	4	0	34
B	H10B-WIDTH-45	11	30	0	34	0
A	H11-WIDTH-45	11	37	10.5	0	41
B	H-11B-WIDTH-45	11	37	0	41	0
A	H12-WIDTH-45	13	48	6	0	54
B	H12B-WIDTH-45	13	48	0	54	0
A	H13-WIDTH-45	13	53	11	0	59
B	H13B-WIDTH-45	13	53	0	59	0