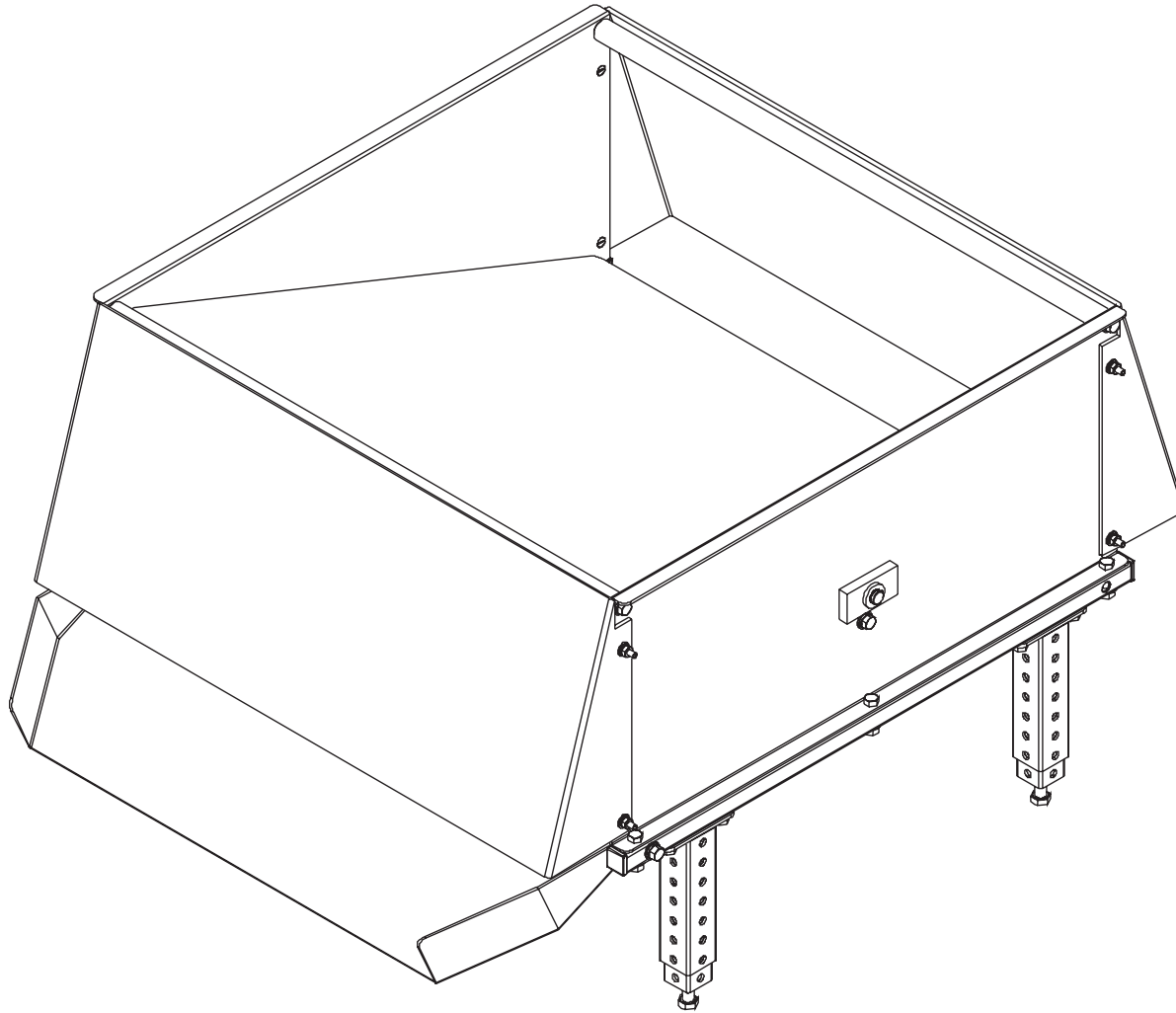


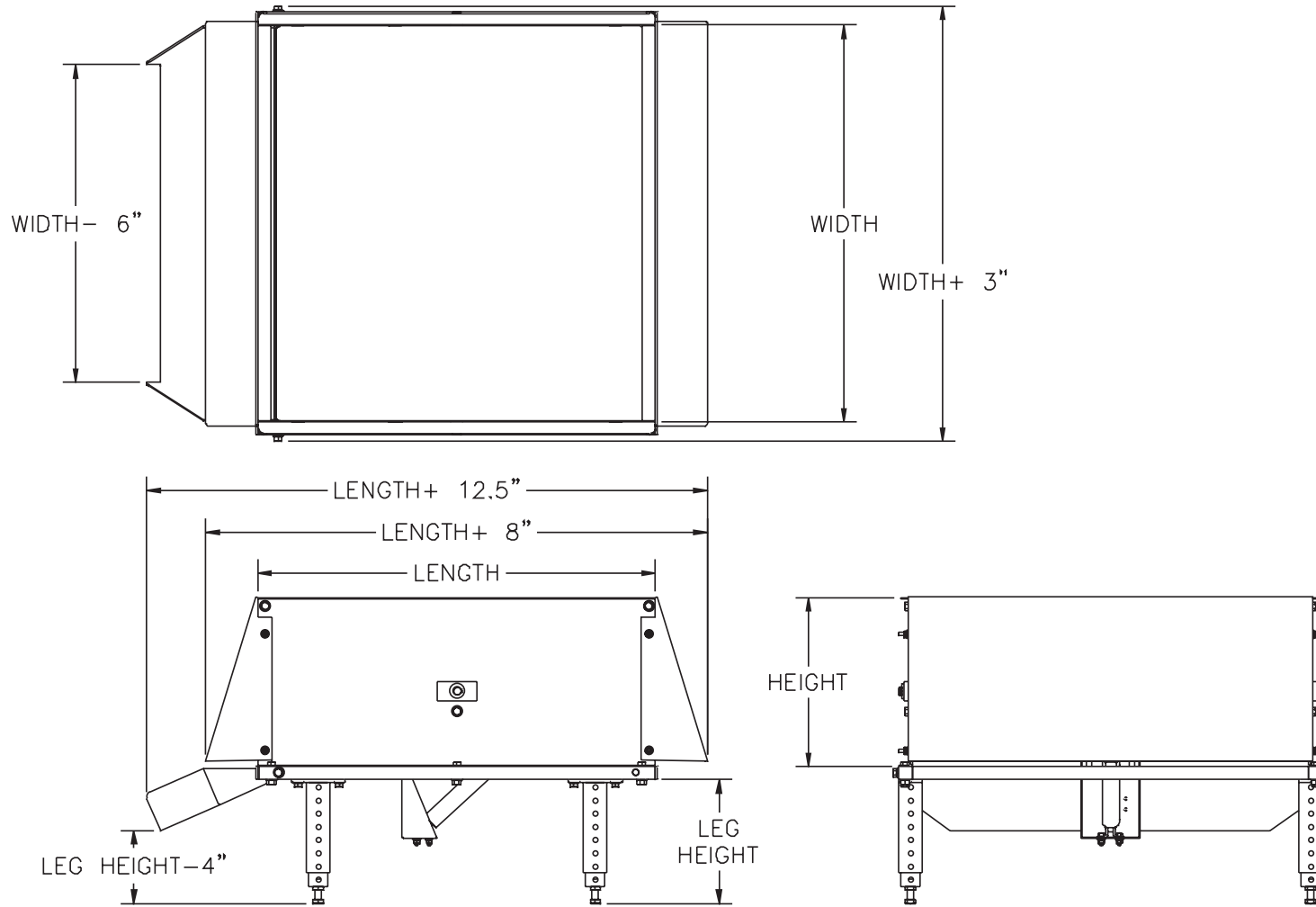
SECTION VIII. PARTS LISTS AND 3-D DRAWINGS

PART DIVERTER - ASSEMBLED VIEW



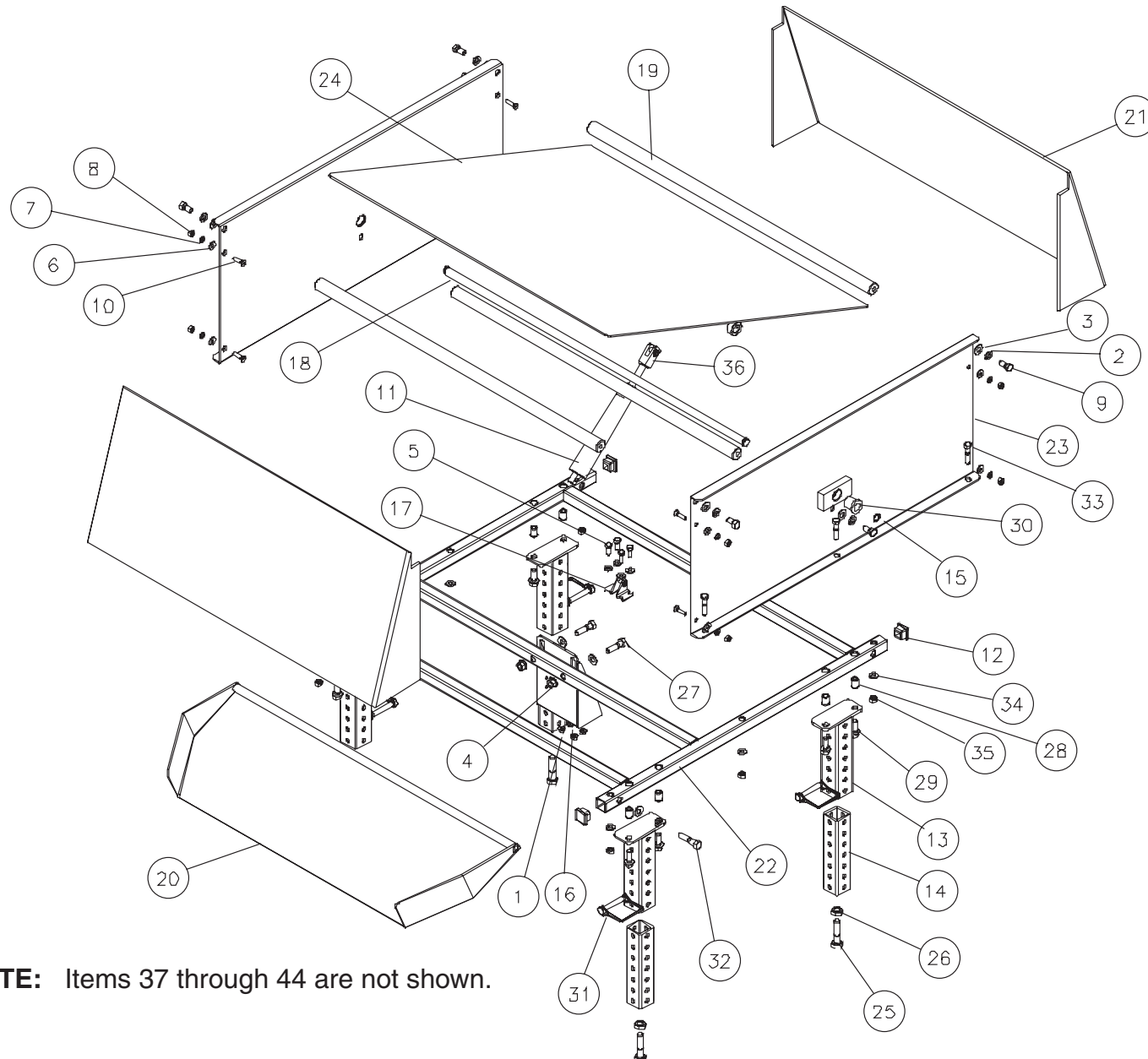
SECTION VIII. PARTS LISTS AND 3-D DRAWINGS

PART DIVERTER - CATALOG VIEW



SECTION VIII. PARTS LISTS AND 3-D DRAWINGS

PART DIVERTER - EXPLODED VIEW



NOTE: Items 37 through 44 are not shown.

PART DIVERTER PARTS LIST

ITEM	QTY	PART DESCRIPTION	EMI P/N	ITEM	QTY	PART DESCRIPTION	EMI P/N
1	4	1/4-28 FLANGE HEX NUT	CP-517	23	2	SIDE RAIL WELD ASS'Y	See BOM
2	8	3/8 LOCK WASHER	CP-700	24	1	FLAPPER WELD ASS'Y	See BOM
3	10	3/8 WASHER	CP-662	25	4	1/2-13 x 2 HEX HEAD BOLT	CP-134
4	2	3/8-24 FLANGE HEX NUT	CP-521	26	4	1/2-13 HEX JAM NUT	CP-508
5	4	1/4-28 x 3/4 HEX HEAD BOLT	CP-125	27	2	3/8-24 x 1-3/4 HEX HEAD BOLT	CP-127
6	12	1/4 WASHER	CP-654	28	8	3/8-16 NUTSERT	CP-2856
7	8	1/4 LOCK WASHER	CP-702	29	8	3/8-16 x 3/4 HEX HEAD FLANGE BOLT	CP-2890
8	8	1/4-20 HEX NUT	CP-524	30	2	BUSHING	CP-853
9	6	3/8-24 x 1 HEX HEAD BOLT	CP-141	31	4	CLIP PIN	CP-2889
10	8	1/4-20 x 3/4 SLOTTED FLAT COUNTERSUNK SCREW	CP-282	32	2	3/8-24 x 1-3/4 HEX HEAD BOLT	CP-127
11	1	CYLINDER	See BOM	33	6	5/16-24 x 1-1/2 HEX HEAD BOLT	CP-129
12	4	1x1 BLACK END CAP	CP-1273	34	6	5/16 WASHER	CP-659
13	4	UPPER LEG WELD ASS'Y	See BOM	35	6	5/16-24 NYLON INSERT LOCK NUT	CP-519
14	4	LOWER LEG WELD ASS'Y	See BOM	36	1	CLEVIS	See BOM
15	2	5/8 SNAP RING	CP-750	37	1	SOLENOID AC (NOT SHOWN)	EL-296
16	1	CYLINDER MOUNTING BRACKET	6J-214-1	38	1	SOLENOID DC (NOT SHOWN)	EL-1330
17	1	PIVOT BRACKET	See BOM	39	1	REGULATOR GAUGE (NOT SHOWN)	CP-233
18	1	PIVOT SHAFT	See BOM	40	1	REGULATOR BRACKET (NOT SHOWN)	CP-1713
19	3	SIDE RAIL CROSS SUPPORT	See BOM	41	2	MUFFLER (NOT SHOWN)	CP-2443
20	1	CHUTE WELD ASS'Y	See BOM	42	1	1/4" CONNECTOR (NOT SHOWN)	CP-355
21	2	LEXAN GUARD	See BOM	43	2	ELBOW (NOT SHOWN)	See BOM
22	1	SUB BASE	See BOM	44	2	MALE ELBOW (NOT SHOWN)	See BOM