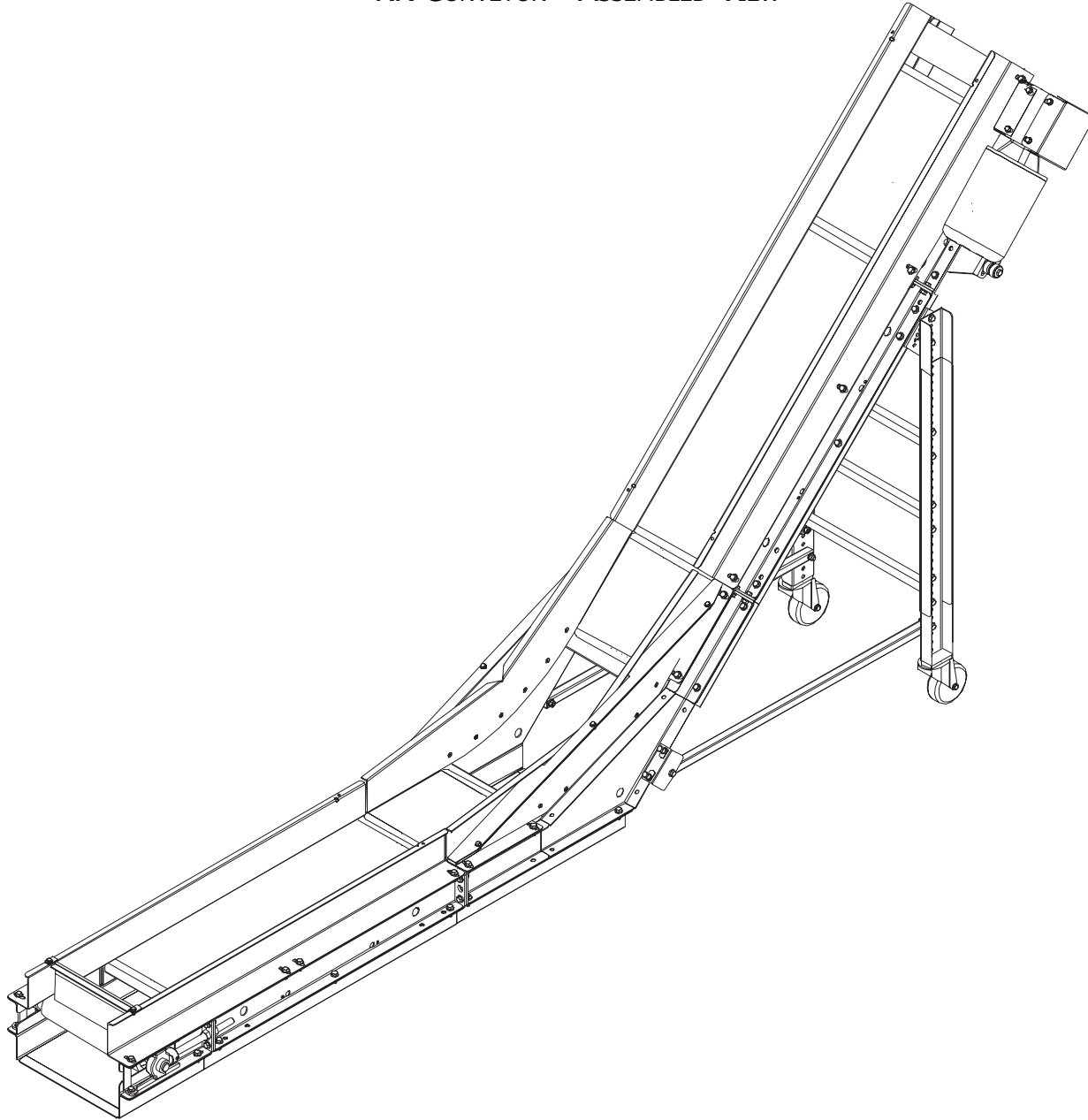


SECTION VIII. PARTS LISTS AND 3-D DRAWINGS

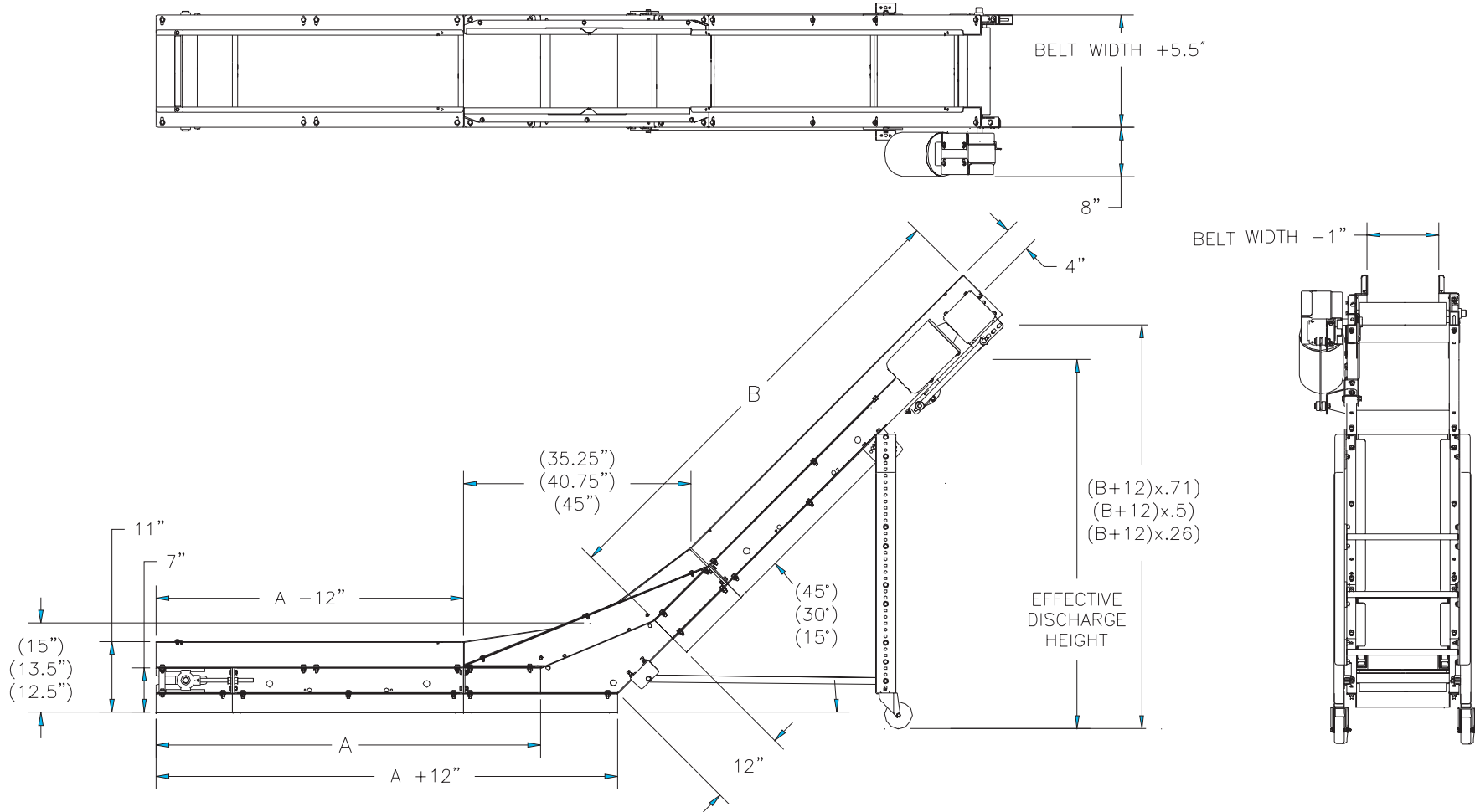
KK CONVEYOR - ASSEMBLED VIEW



SECTION VIII. PARTS LISTS AND 3-D DRAWINGS

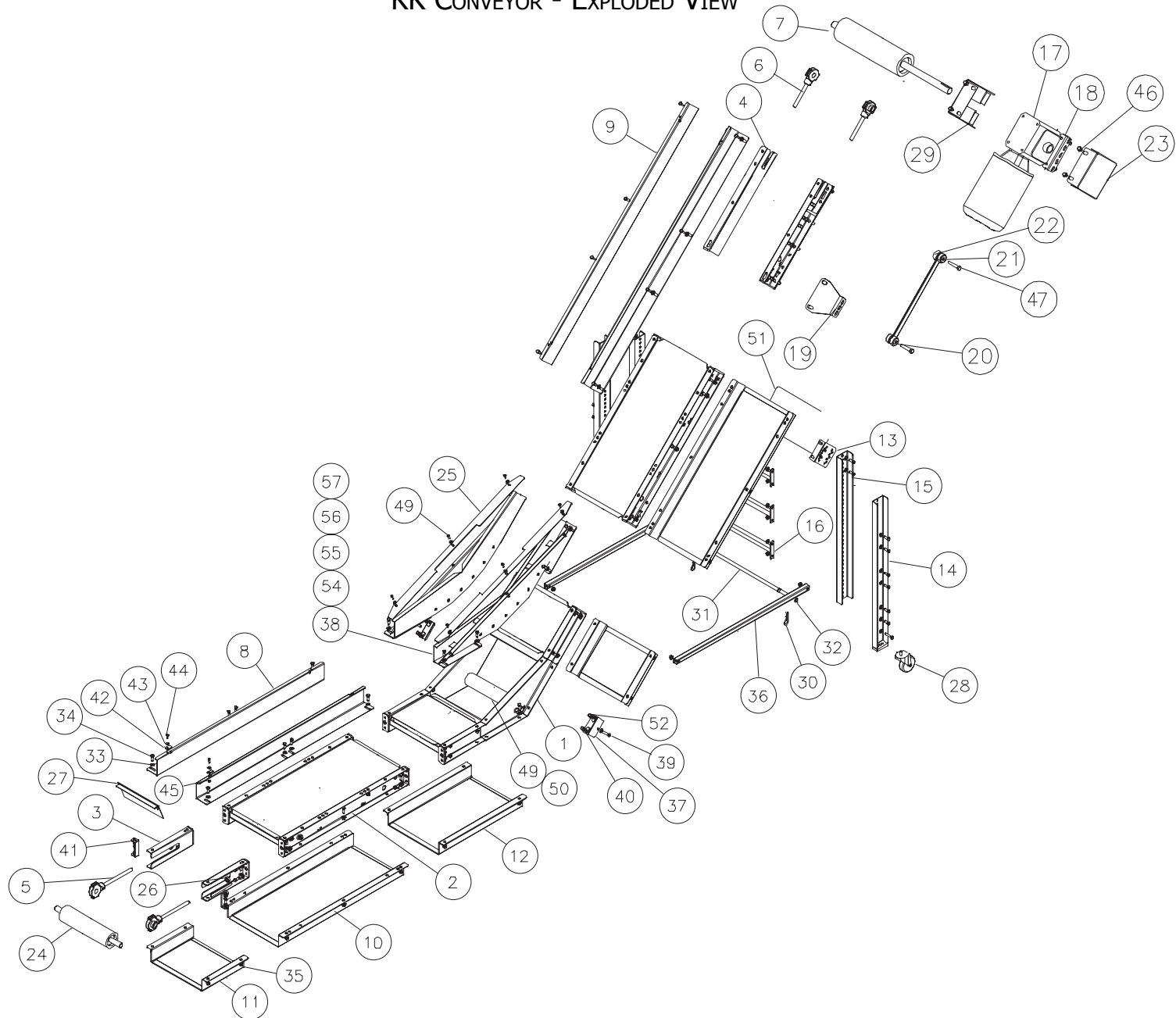
KK CONVEYOR - CATALOG VIEW

- NOTE: 1) DRIVE WILL BE MOUNTED ON THE INFEED FOR 24" AND 30" WIDE MODELS
 2) KK MODEL IS AVAILABLE IN 15,30, AND 45 DEGREE INCLINES



SECTION VIII. PARTS LISTS AND 3-D DRAWINGS

KK CONVEYOR - EXPLODED VIEW



KK CONVEYOR PARTS LIST

ITEM	QTY	PART DESCRIPTION	EMI P/N	ITEM	QTY	PART DESCRIPTION	EMI P/N
1	1	30° - 4E-244-1-W TRANSITION ASSY	45° - 4E-244-11-W	30	4	SPRING PIN	CP-1285
2	2	FRAME ASSY	4E-206-L-W	31	1	AXLE SHAFT	4E-21-1-W
3	2	TAIL ASSY	4E-258-1	32	2	SNAP RING	CP-750
4	1	DRIVE HEAD ASSY	4E-204-1-W	33	98	3/8 WASHER	CP-662
5	2	TAIL PULLEY TAKE-UP BEARING	2E-232-2	34	86	3/8-24x1 HEX BOLT	CP-141
6	2	DRIVE PULLEY TAKE-UP BEARING	2E-232-3	35	98	3/8-24 HEX NUT	CP-521
7	1	DRIVE PULLEY	2E-210-3-W	36	2	KNEE BRACE	See Next Pg.
8	2	INFEED RAIL	4E-33-L	37	2	LEG BRACE SUPPORT	4E-241-2
9	2	DISCHARGE RAIL	4E-33-L	38	2	30°- 4E-233-6001 TRANSITION RAIL ASSY	45°- 4E-233-6002
10	2	BOTTOM SLIDE TRAY	See Next Pg.	39	4	3/8-24x 1-3/4 HEX BOLT	CP-127
11	2	1' TAIL BOTTOM SLIDE TRAY	See Next Pg.	40	4	3/8-16 HEX JAM NUT	CP-531
12	1	2' KK BOTTOM SLIDE TRAY	See Next Pg.	41	4	END BRACKET	4E-14-1
13	2	LEG MOUNTING BRACKET	4E-14-3	42	2	FLAPPER CLIP	2E-01-10
14	2	LEG WELD ASSY	SEE CHART	43	13	1/4 WASHER	CP-654
15	2	LEG EXTENSION	SEE CHART	44	10	1/4-28 X 3/4 HEX BOLT	CP-125
16	3	LEG BRACE ASSY	4E-241-1-W	45	10	1/4-20 HEX NUT	CP-517
17	2	MOTOR MOUNT SPACER TUBE	See Next Pg.	46	8	3/8-24x4 HEX BOLT	CP-153
18	1	MOTOR & REDUCER SUPPORT	4E-29-23-W	47	3	1/4-20x3/4 SLOTTED ROUND HEAD CAP SCREW	CP-2305
19	1	SPROCKET	CP-1295	48	4	3/8-24x1-1/2 HEX BOLT	CP-137
20	1	SPROCKET	CP-1364	49	2	IDLER ROLLER	2E-240-36-W
21	1	MOTOR & REDUCER	See BOM	50	1	IDLER SHAFT	2E-21-35-W
22	1	CHAIN GUARD COVER	See Next Pg.	51	1	BELT SUPPORT	4E-29-91-W
23	1	CHAIN GUARD	See Next Pg.	52	4	3/8-16X1 SQHD SET SCREW	CP-203
24	1	TAIL PULLEY	2E-224-2-W	53	4	3/8X1-1/4OD WASHER	CP-671
25	2	30° - 4E-08-3 TRANSITION BELT ROLLER GUARD	45° - 4E-08-4	54	12	TRANSITION ROLLER	CP-1348
26	8	5/8-11 HEX NUT	CP-505	55	12	ROLLER BUSHING	CP-857
27	1	FLAPPER ASSY	2E-249-5-W	56	12	ROLLER STUD	2E-21-23
28	2	WHEEL	CP-1361	57	24	BRONZE WASHER	CP-855
29	2	"U" BOLT	CP-459	58	1	CHAIN (NOT SHOWN)	2E-40-4

Part numbers listed in this document are for reference only. When buying replacement parts please provide your conveyor model & serial number to ensure the correct part.

KK CONVEYOR PARTS LIST - ADDITIONAL ITEMS

Item #10:

2" Drop	4E-245-L-W
3" Drop	4E-245-15L-W
4" Drop	4E-245-1L-W

Item #11:

2" Drop	4E-245-21-W
3" Drop	4E-245-150-W
4" Drop	4E-245-22-W

Item #12:

2" Drop	4E-245-52-W
3" Drop	4E-245-149-W
4" Drop	4E-245-53-W

Item #22:

2" LH	4E-67-1
2" RH	4E-67-2
3" LH	4E-67-84
3" RH	4E-67-85

Item #23:

2" LH	4E-08-1
2" RH	4E-08-1
3" LH	4E-08-108
3" RH	4E-08-108

Item #36:

18"	4E-41-29
26"	4E-41-5
38"	4E-41-6
69"	4E-41-7