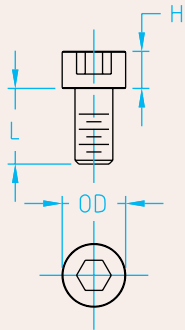


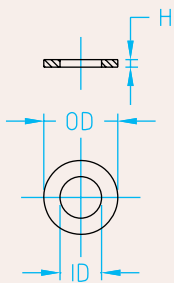
General Fasteners

Dimensional Information



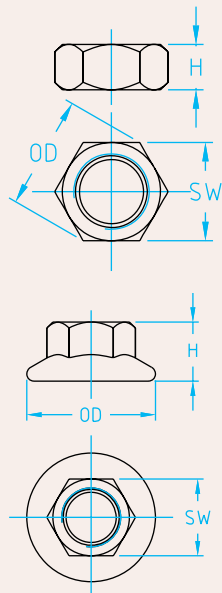
Socket Head Cap Screws

	OD	H
M2.5 x 0.45	4.5	2.5
M3 x 0.5	5.5	3
M3.5 x 0.6	5.7	3.5
M4 x 0.7	7	4
M5 x 0.8	8.5	5
M5 x 0.8 Low head	8.5	3.5
M6 x 1	10	6
M8 x 1.25	13	8
M10 x 1.5	16.5	10



Washers

	ID	OD	H
M2.5 Washer	2.7	5	0.5
M2.5 Fender washer	2.7	8	0.8
M2.5 Lock washer	2.7	4.8	0.45
M3 Washer	3.2	6	0.5
M3 Fender washer	3.2	9	0.8
M3 Lock washer	3.2	5.5	0.45
M4 Washer	4.3	8	0.5
M4 Fender washer	4.3	12	1.0
M4 Lock washer	4.3	7	0.5
M5 Washer	5.3	9.5	1.0
M5 Fender washer	5.3	15	1.2
M5 Thin lock washer	5.3	9	0.6
M5 Thick lock washer	5.3	9	1.0
M6 Washer	6.4	11	1.6
M6 Fender washer	6.4	18	1.6
M6 Lock washer	6.4	10	0.7
M6 Thick lock washer	6.4	10	1.0
M8 Washer	8.4	15	1.6
M8 Fender washer	8.4	24	2.0
M8 Lock washer	8.4	13	0.8
M8 Thick lock washer	8.4	13	1.2



Nuts

	OD	H	SW
M2.5x0.45 Nut	5.8	2	5
M3x0.5 Nut	6.4	2.4	5.5
M4x0.7 Nut	8.1	3.2	7
M5x0.8 Nut	9.3	4	8
M5x0.8 Lock nut	11.2	4.3	8
M6x1 Nut	11.6	5	10
M6x1 Lock nut	14.2	5.5	10
M8x1.25 Nut	15.0	6.5	13
M8x1.25 Lock nut	18.2	7	13
G1/8" Nut thin	13.7	3.6	12
M10x1 Nut thin	14.5	5	17
M16x1 Nut thin	25.2	5.2	22

M2.5

Quick #	Part #	Description	Price
801	GSC-M2.5-4	M2.5 x 4mm	\$0.20
802	GSC-M2.5-5	M2.5 x 5mm	\$0.14
803	GSC-M2.5-6	M2.5 x 6mm	\$0.14
804	GSC-M2.5-8	M2.5 x 8mm	\$0.15
805	GSC-M2.5-10	M2.5 x 10mm	\$0.15
806	GSC-M2.5-12	M2.5 x 12mm	\$0.17
807	GSC-M2.5-14	M2.5 x 14mm	\$0.30
808	GSC-M2.5-16	M2.5 x 16mm	\$0.20
809	GSC-M2.5-LW	Lock washer	\$0.10
810	GSC-M2.5-W	M2.5 Washer	\$0.10
811	GSC-M2.5-FW	Fender washer	\$0.10
812	GSC-M2.5-N	M2.5 Nut	\$0.10

M3

Quick #	Part #	Description	Price
813	GSC-M3-5	M3 x 5mm	\$0.10
814	GSC-M3-6	M3 x 6mm	\$0.10
815	GSC-M3-8	M3 x 8mm	\$0.10
816	GSC-M3-10	M3 x 10mm	\$0.10
817	GSC-M3-12	M3 x 12mm	\$0.10
818	GSC-M3-14	M3 x 14mm	\$0.10
819	GSC-M3-16	M3 x 16mm	\$0.10
820	GSC-M3-18	M3 x 18mm	\$0.11
821	GSC-M3-20	M3 x 20mm	\$0.10
822	GSC-M3-22	M3 x 22mm	\$0.23
823	GSC-M3-25	M3 x 25mm	\$0.23
824	GSC-M3-30	M3 x 30mm	\$0.15
825	GSC-M3-35	M3 x 35mm	\$0.18
826	GSC-M3-40	M3 x 40mm	\$0.46
827	GSC-M3-LW	Lock washer	\$0.10
828	GSC-M3-W	Washer	\$0.10
829	GSC-M3-FW	Fender washer	\$0.10
830	GSC-M3-N	Nut	\$0.10
901	GSC-M3-LN-ZP-NI	Zinc plated Lock-Nut	\$0.10

M3.5

Quick #	Part #	Description	Price
912	GSC-M3.5-6	M3.5 x 6mm	\$0.50
942	GSC-M3.5-10	M3.5 x 10mm	\$0.60
943	GSC-M3.5-16	M3.5 x 16mm	\$0.60
965	GSC-M3.5-20	M3.5 x 20mm	\$0.60
796	GSC-M3.5-LW	M3.5 Lock washer	\$0.10

Tap Plugs

Quick #	Part #	Description	Price
910	GSC-TAP-G8P	G1/8" Tap plug	\$23.00
911	GSC-TAP-G8B	G1/8" Tap bottoming	\$23.75
963	GSC-TAP-G4P	G1/4" Tap plug	\$35.90
964	GSC-TAP-G4B	G1/4" Tap bottoming	\$35.75

#910 G1/8" Plug Tap



#911 G1/8" Bottoming Tap



Note: G1/8" major diameter is .3830" minor diameter is .3372"