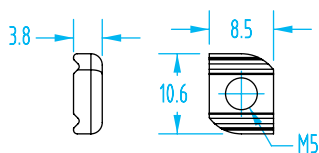


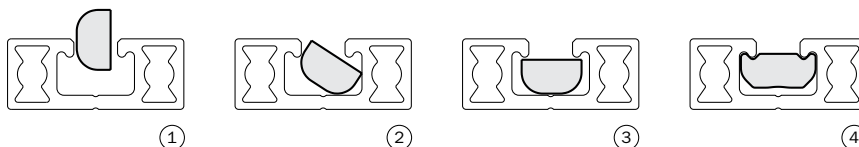
Channel Nuts

#7115

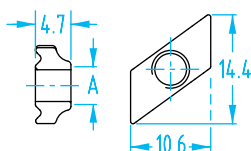


Quick#	Part#	Price	Wt.
7115	MFI-243	\$1.20	2g

Drop-in #7115 & rotate 90° when you need to add to an already assembled EOAT.



#6088, #6089, #6090

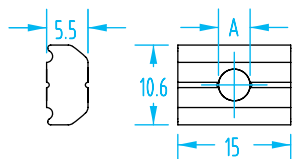


NEW

Quick#	Part#	Price	A	Wt.
6090	MFI-490	\$2.25	M3	2g
6089	MFI-489	\$2.25	M4	2g
6088	MFI-477	\$2.25	M5	2g

Drop-in #6088–#6090 & rotate 90° when you need to add to an already assembled EOAT.

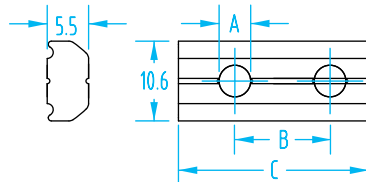
#6058, #6019, #6059



Quick#	Part#	Price	A	Wt.
6058	MFI-177	\$0.99	M4	5g
6019	MFI-025	\$0.99	M5	5g
6059	MFI-178	\$0.99	M6	5g

Use Quick#s for easy online ordering.

#6020–#6032



Quick#	Part#	Price	A	B	C	Wt.
6020	MFI-003	\$1.45	M4	8	16	5g
6021	MFI-006	\$1.45	M5	10	20	7g
6022	MFI-009	\$1.45	M5	15	25	9g
6023	MFI-148	\$1.45	M5	17	25	9g
6024	MFI-016	\$1.45	M5	22	32	11g
6025	MFI-027	\$1.45	M5	25	35	13g
6026	MFI-055	\$1.45	M5	28	38	14g
6027	MFI-050	\$1.65	M5	30	40	15g
6028	MFI-029	\$1.65	M5	35	45	16g
6029	MFI-020	\$1.65	M5	40	50	18g
6030	MFI-043	\$1.65	M5	50	60	22g
6031	MFI-022	\$1.65	M5	60	70	26g
6032	MFI-045	\$1.65	M5	90	100	38g

Gimatic & >ASS< Profile Compatibility



Gimatic Brackets and Channel Nuts work with >ASS< Profile.



>ASS< Brackets and Channel Nuts work with Gimatic Profile.

