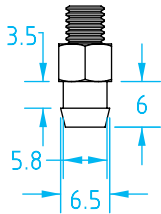
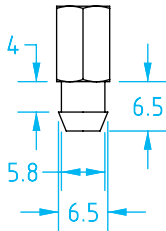


Hithane® – Vacuum Cup Nipples

(Shown Actual Size)



#408, nickle-plated, FDA approved

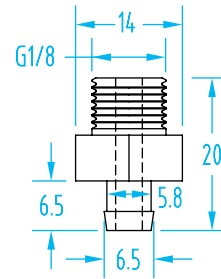


#5431

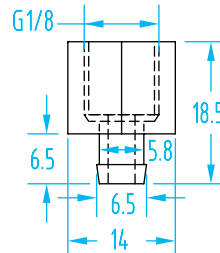


Thread	Quick#	Part#	Price
Female M5	5431	GSF-HTN1-M5F	\$3.59
Male M5	408	GSF-N16-M5M	\$3.35

For: Flat Cups: 5mm, 8mm, 11mm, 15mm, and 20mm
 1.5 Bellows Cups: 11mm, 14mm, 20mm, and 25mm
 2.5 Bellows Cups: 7mm, 9mm, 12mm, 14mm, 18mm, 20mm and 25mm



#1604

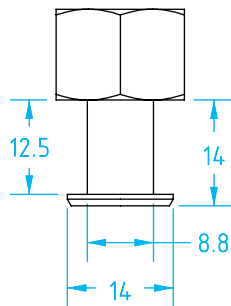


#1603

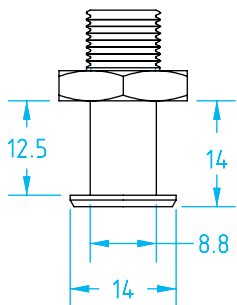
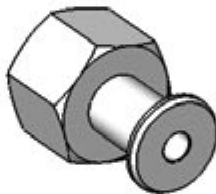


Thread	Quick#	Part#	Price
Male G1/8"	1604	GSF-PFN-G8M	\$3.80
Female G1/8"	1603	GSF-PFN-G8F	\$3.80

For: Flat Cups: 5mm, 8mm, 11mm, 15mm, and 20mm
 1.5 Bellows Cups: 14mm, 20mm, and 25mm
 2.5 Bellows Cups: 7mm, 9mm, 12mm, 14mm, 18mm, and 25mm



#5432

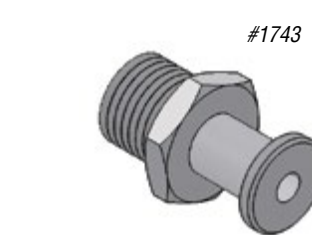


#5433

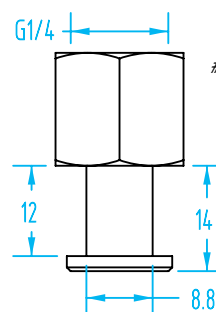
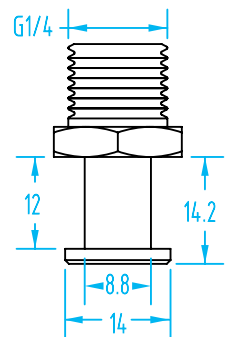


Thread	Quick#	Part#	Price
Female G1/8"	5432	GSF-HTN1-G8F	\$3.67
Male G1/8"	5433	GSF-HTN1-G8M	\$3.67

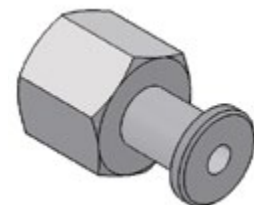
For: Flat Cups: 30mm, 40mm, and 50mm
 1.5 Bellows Cups: 33mm, 43mm, and 53mm
 2.5 Bellows Cups: 32mm, and 42mm



#1743



#1744



Thread	Quick#	Part#	Price
Male G1/4"	1743	GSF-HTN4-G4M	\$6.45
Female G1/4"	1744	GSF-HTN4-G4F	\$6.46

For: Flat Cups: 30mm, 40mm, and 50mm
 1.5 Bellows Cups: 33mm, 43mm, and 53mm
 2.5 Bellows Cups: 32mm, and 42mm