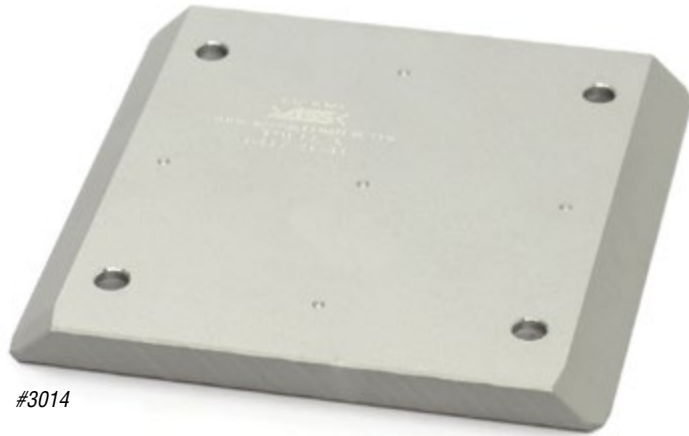
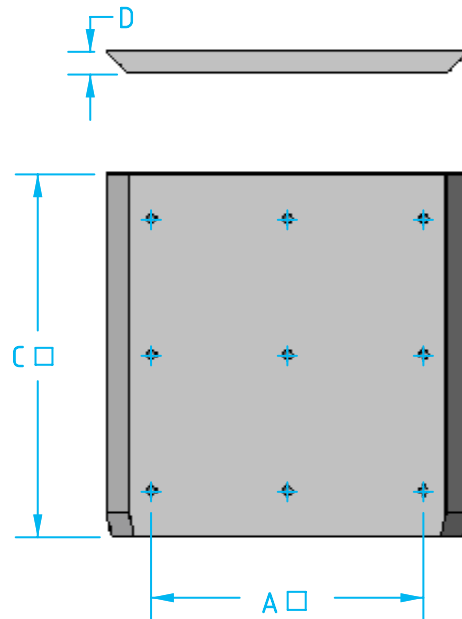


>S< Style EOAT Mounting Plate



#3014



EOAT Side Plate

Quick#	Part#	>ASS< #	Price	A	C	D	Wt.	Profile	Description
3009	GPMGR-01	1-005-05-00	\$11.00	-	40	8	29g	ANY	Solid
3010	GPMGR-0	1-005-10-00	\$13.50	35	60	8	68g	ANY	Pre-located center-punched holes
3011	GPMGR-0M	1-005-15-00	\$17.50	35	60	8	71g	L	M4 tapped threads
3012	GPMGR-1	1-005-25-00	\$17.00	70	100	8	196g	ANY	Pre-located center-punched holes
3014	GPMGR-1X	1-005-30-00	\$26.00	70	100	8	191g	X	Thru holes with counter bore. Includes M5 screws and slotted nuts
3015	GPMGR-2	1-005-40-00	\$25.50	120	160	10	639g	ANY	Pre-located center-punched holes
3016	GPMGR-2X	1-005-45-00	\$42.50	120	160	10	710g	X	Thru holes with counter bore. Includes M5 screws and slotted nuts
3017	GPMGR-2J	1-005-50-00	\$45.00	120	160	10	745g	J	Thru holes with counter bore. Includes M6 screws and slotted nuts
3018	GPMGR-3	1-005-60-00	\$40.00	200	250	10	1665g	ANY	Pre-located center-punched holes
3019	GPMGR-3X	1-005-65-00	\$57.00	200	250	10	1596g	X	Thru holes with counter bore. Includes M5 screws and slotted nuts
3020	GPMGR-3J	1-005-70-00	\$59.50	200	250	10	1592g	J	Thru holes with counter bore. Includes M6 screws and slotted nuts

Use Quick#s for easy online ordering.