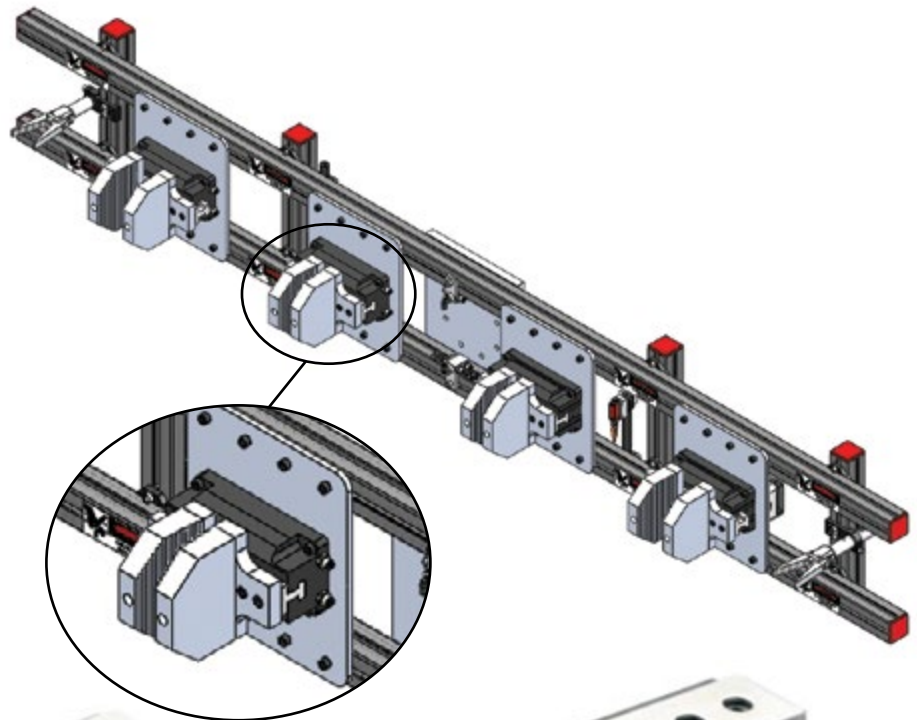


High-Precision Gripper – MGX

- Flat profile, Self-centering gripper.
- Robust guidance.
- High gripping force.
- Lightweight and small size.
- High dimensional accuracy.
- FDA-H1 food-grade grease.
- Spring closed (-NC) or spring open (-NO) option available.
- Optional proximity magnetic sensors.



Part#	MGX2005	MGX2508	MGX3210	MGX3214	MGX4015	MGX5020	MGX6030
Quick#	6765	6766	6767	7306	6768	6769	6770
Price	\$465.00	\$525.00	\$586.00	\$586.00	\$616.00	\$676.00	\$737.00
Medium	Filtered, lubricated / non-lubricated compressed air						
Pressure range	30–116 psi						
Total gripping force at 87 psi	40 lbf	65 lbf	103 lbf	72 lbf	168 lbf	292 lbf	373 lbf
Total stroke (±0.3mm)	5mm	8mm	10mm	14.6mm	15mm	20mm	30mm
Maximum repeatability tolerance	±0.02mm						
Midstroke detection capability	Yes, with use of Inductive sensors only				Yes, with Inductive or magnetoresistive sensors		
Mid-stroke detection capability with Gimatic PRO Sensors	Yes (see page 979)						
Weight	95g	150g	270g	270g	545g	900g	1525g

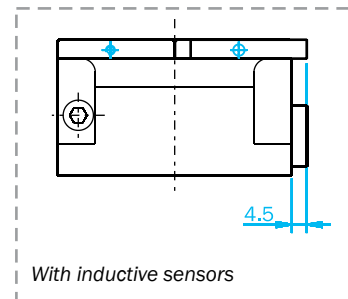
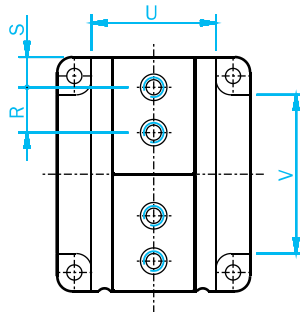
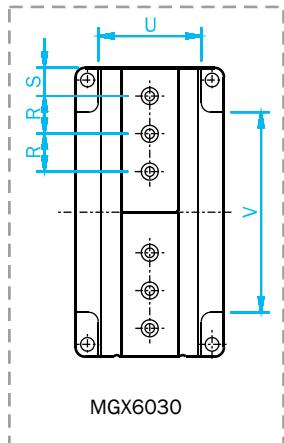
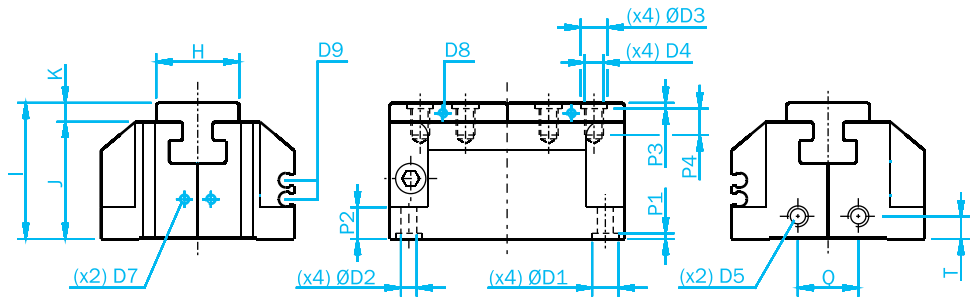
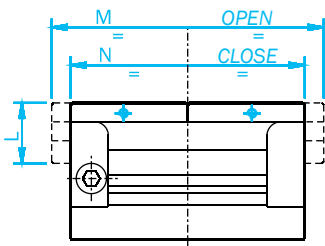
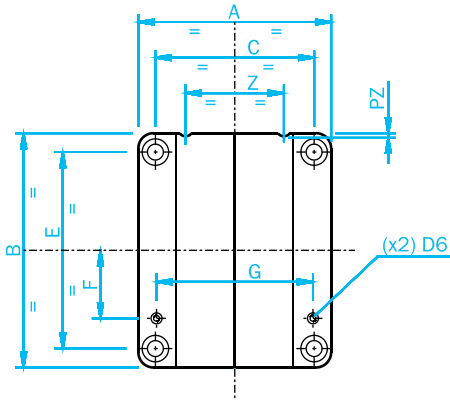
For more information visit: www.EMICorp.com

High-Precision Gripper – MGX

Reference:

- D2-** Thru-hole for gripper fastening
- D5-** Air Connection
- D6-** Direct air feeding
- D7-** Inductive sensor mounting hole
- D8-** Inductive sensor mounting hole
- D9-** Magnetic sensor slot

	MGX2005	MGX2508	MGX3210	MGX3214	MGX4015	MGX5020	MGX6030
A	35.8	42	51	51	61.2	70	78.6
B	44	55	62	62	93	118	153
C	28.3	33	42	42	51	58	66
D1	Ø5 H7	Ø7 H7	Ø7 H7	Ø7 H7	Ø7 H7	Ø9 H7	Ø9 H7
D2	Ø3.2	Ø4.2	Ø4.2	Ø4.2	Ø5.2	Ø6.2	Ø6.2
D3	Ø5 H7	Ø7 H7	Ø7 H7	Ø7 H7	Ø9 H7	Ø12 H7	Ø9 H7
D4	M3	M4	M5	M5	M6	M8	M6
D5	M5	M5	M5	M5	M5	G1/8"	G1/8"
D6	M3	M3	M3	M3	M3	M3	M3
E	36.5	46	52	52	80	105	140
F	12.5	15.5	18	18	27.5	37	43.5
G	27.2	333.6	41.4	41.4	49.6	58.6	67.6
H	14	16	22	22	25	28	30
I	26	28.5	36	36	42	49	58
J	22	24	31	31	37	43	51
K	4	4.5	5	5	5	6	7
L	11.2	12.7	16	16	20	25	29
M	49	63	72	76	108	138	183
N	44	55	62	62	93	118	153
P1	1.2	1.5	1.5	1.5	1.5	2	2
P2	5.5	6	8.4	8.4	9	10	13.5
P3	1.2	1.5	1.5	1.5	2	2.5	2.5
P4	5	5.2	7	7	9	12	12
Q	11	12	16	16	31.2	32	40
R	9	10	12	12	12	24	20
S	5.5	6	8	8	12.5	14	15
T	5.8	6	6	6	6	8	8
U	20.8	24	33	33	41.2	46	54.6
V	29	37	42	42	65	88	106
Z	17	20	26	26	30	33	35
PZ	0.5	0.5	0.8	0.8	0.8	0.8	0.8



With inductive sensors