

# Custom Drawer Magnet Order Form

Submit one form for each drawer magnet.

Top Flange (unless otherwise specified):

DM-4: 5" x 5"

DM-6: 7" x 7"

DM-8: 9" x 9"

(These can be customized)

Top Mounting Hole Specs:

No Holes

Threaded Hole Size:

Fine

Course

Thru Hole Diameter:

Bottom Mounting Hole Specs:

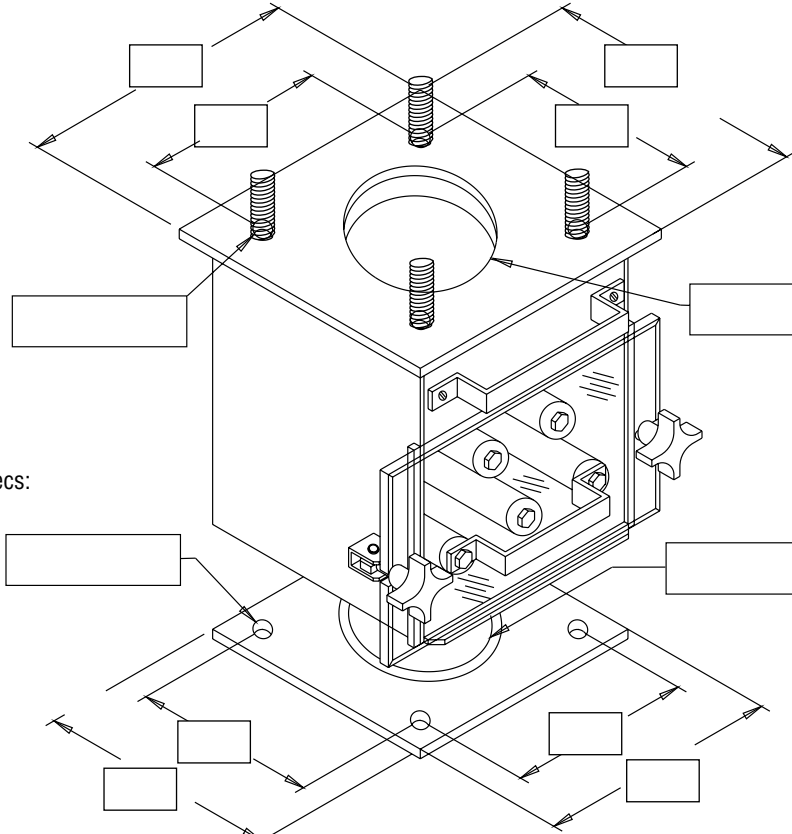
No Holes

Threaded Hole Size:

Fine

Course

Thru Hole Diameter:



Material Hopper Throat Diameter:

Inside Diameter:

DM4: Max=2"

DM6: Max=4½"

DM8: Max=6"

Machine Feed Throat Diameter:

Inside Diameter:

DM4: Max=2" / Min=7/8"

DM6: Max=37/8" / Min=17/8"

DM8: Max=6" / Min=4"

Specify Bottom Flange

**Note:** Top and bottom flanges can be different sizes and have different drill holes. Thickness = ¼"

**Note:** If mounting hole specs matches housing dimensions, male threaded studs will be used with specified thread.

**Options (select all):**

Low Profile Drawer Magnet

Sealed Drawer Magnet

Rare Earth Magnet

Purge Hopper  
(Specify Location: \_\_\_\_\_)

Tapped, Liquid Dispensing Unit  
(Specify Tap Size: \_\_\_\_\_)

Discharge Dump Tube (Specify Location: \_\_\_\_\_)

Without Slide Shutoff Gate

**Construction:**

Stainless Steel

Powder Coated Painted Steel

Drawer Magnet Model: \_\_\_\_\_

Quantity: \_\_\_\_\_

Company: \_\_\_\_\_

Name: \_\_\_\_\_

Email: \_\_\_\_\_

Phone: \_\_\_\_\_

Email completed form to: [Sales@EMInc.com](mailto:Sales@EMInc.com)